

MODELLO STATICO

AUTORE : G. FANELLO (GIAI)

[E] Agip



INDICE

1.	MODELLO STATICO	pag.	1
1.1	GEOFISICA		1
1.2	GEOLOGIA		2
1.3	PETROFISICA		4
1.4	COSTRUZIONE E DESCRIZIONE DELLE MAPPE		5
1.5	VALUTAZIONE IDROCARBURI IN POSTO		6

FIGURE



- 1 Campo di Ripalta - Schema Strutturale
- 2 Campo di Ripalta - Log Livello **A1** e **A2**
- 3 Campo di Ripalta - Mappa indice delle sezioni
- 4 Campo di Ripalta - Mappa Top Livello **A1**
- 5 Campo di Ripalta - Mappa Top Livello **A2**
- 6 Campo di Ripalta - Mappa Spessore Livello **A1**
- 7 Campo di Ripalta - Mappa Spessore Livello **A2**

TABELLE



- 1 Campo di Ripalta - Valutazione idrocarburi in posto

ALLEGATI



- 1 Campo di Ripalta - Sezione I
- 2 Campo di Ripalta - Sezione II



1. MODELLO STATICO

1.1 GEOFISICA

Lo scopo della interpretazione sismica é quello di ricostmire l'assetto stmtturale della piega di Ripalta e, in particolare, definire l'andamento della faglia inversa che determina il sovrascorrimento.

Per lo studio sismico sono stati presi in considerazione dodici sezioni migrate dip (perpendicolari alla stmttura) e due sezioni strike utilizzate per il controllo agli incroci.

Le sezioni sismiche derivano da differenti campagne di acquisizione con **etá** che variano tra il 1968 e il 1990, ed inoltre processing e reprocessing sono stati effettuati da diverse societfi: questi fattori hanno comportato problemi di shift agli incroci e contenuto in frequenza del segnale non sempre uguale.

I problemi agli incroci sono stati in parte risolti con la semplice traslazione verso l'alto o verso il basso della scala dei tempi.

Dei sessanta pozzi presenti nell'area solo nel pozzo R42 prof. sono state eseguite le misure di **velocitá** sismica. Questo ha permesso comunque di agganciare il taglio in profonditfi dell'orizzonte di interesse con la sismica trasformando il valore di profonditii in tempi doppi.

La mappa tempi che nasce dalla interpretazione delle linee sismiche disponibili mette in luce una semplice anticlinale allungata in senso Est-Ovest, delimitata verso Sud dalla faglia inversa, motore del sovrascorrimento.

Il top della struttura sembra non essere interessato da alcun tipo di dislocazione. I fianchi meridionali della piega appaiono piú pendenti di quelli settentrionali.

Dalla coppia tempo-profonditfi di tutti i pozzi disponibili si é ottenuta una distribuzione di punti di **velocitá** media utilizzata per la ricostruzione di una mappa di VM per l'orizzonte interpretato.

Dalla mappa tempi e mappa **velocitá** si é calcolata la mappa delle isobate la quale é ben controllata sia al top della struttura, dove maggiore é la concentrazione di pozzi, sia sui fianchi poiché rispettano i pozzi piú periferici ed il trend individuato dalla interpretazione sismica.



1.2 GEOLOGIA

Il giacimento di Ripalta é stato studiato dal punto di vista geologico durante la produzione primaria (vedi GIACIMENTO DI RIPALTA del 1958 e STUDIO DEL GIACIMENTO DI RIALTA del 1963) e piú recentemente dopo il 1967 é stato fatto uno studio prevalentemente dinamico atto a potenziare lo stoccaggio (STUDIO DI STOCCAGGIO 5/1987).

I dati a nostra disposizione sono i log registrati in 60 pozzi da cui si devono escludere quelli del pozzo R16 perché si trova fuori struttura e quelli del pozzo R12 in quanto non ha funzionato la registrazione.

La struttura del campo di Ripalta é formata da una blanda anticlinale continua con asse in direzine E-W e vergenza Sud.

All'interno di tale struttura reservoir non sono presenti elementi tettonici.

Dal punto di vista regionale si tratta di una struttura la cui attivazione é iniziata nel tardo Tortoniano e proseguita fino al Pliocene (figura 1).

Litologicamente il campo di Ripalta é costituito da livelli di sabbie piú o meno grossolane intercalate da zone piú siltoso-argillose.

Il Pool A, che si trova ad una profonditá media di 1400 mssl, é costituito da due livelli sabbiosi dinamicamente in comunicazione e geologicamente separati da un setto argilloso correlabile in tutto il campo (figura 2).

La zonazione é stata fatta in modo da distinguere il livello A₁ dal sottostante livello A₂ (figura 3 e allegati 1- 2).

I terreni del Pool A appartengono alla F.ne Sabbie di Caviaga del Miocene superiore passanti in continuitá stratigrafica alla F.ne Argille del Santerno del Pliocene, che garantisce la separazione dinamica dello stesso con i sovrastanti livelli "minori". Questi livelli sono delle lenti di sabbia intercalati alle argille di copertura del Pool A, con ridotto spessore e ridotta estensione areale e presenti solo in zone periferiche del campo.

Il Pool C, che é il piú esteso di questi livelli si trova nei pozzi R12-R17-R20-R6-R1-R3-R28-R13 ed ha uno spessore medio di 8.5 m ed una profonditá media di 1300mssl; il Pool E, sovrastante il Pool C, é individuabile nei pozzi R22-R21-R15-R8-R12-R17-R20 con uno spessore medio di 1.5 m; il Pool F' si trova nei pozzi R3 e R28, ha uno spessore medio di 8 m ed é sotto il Pool C; infine il Pool F si segue nei pozzi R11 e R23 nella zona a Sud del campo.

Tutti questi Pool hanno prodotto in passato ed attualmente i pozzi completati su di essi sono chiusi minerariamente.

Esiste poi un livello chiamato Livello B, ad acqua e situato sotto il livello studiato.



Il contatto gas acqua originario é stato rivisto ed é stato posto come contatto unico per i due livelli a quota **1518** mssl.

Complessivamente il Pool **A** ha uno spessore medio di campo di circa **80** m di cui 35 m appartengono al livello **A₁** e i restanti **45** m circa al livello **A₂**.

Il livello **A₁** si presenta con un aspetto molto piú argilloso del livello sottostante ed ha infatti un Net Pay medio di **8** m circa; viceversa il livello **A₂** presenta un Net Pay medio di circa 20 m e ció é dovuto alla presenza di un pacco di **20** m circa di spessore posizionato alla base del livello costituito da sabbia pulita.

Complessivamente sommando i due livelli, il Pool **A** presenta delle buone caratteristiche produttive.



1.3 PETROFISICA

La porosità e la saturazione in acqua interstiziale sono rispettivamente del 25% e del 20%, mentre la permeabilità media è di 90 mD.

Il Net/Gross per ogni pozzo è stato calcolato utilizzando un cut off sulla curva di Potenziale Spontaneo e dai dati ricavati è stato estrapolato un valore medio di Campo successivamente impiegato nel calcolo del GOIP.

Il NET/GROSS medio per ogni livello è:

- LIVELLO A₁ 0.19
- LIVELLO A₂ 0.40

1.4 COSTRUZIONE E DESCRIZIONE DELLE MAPPE



Come mappa del Top formazionale é stata utilizzata quella ricavata dall'interpretazione sismica.

Succesivamente con i dati di spessore riferiti ai singoli pozzi sono state **costruite** delle mappe di spessore sia per i livelli del Pool A sia per le argille di separazione (figura 6 - 7).

Alla mappa del Top Strutturale, che coincide con il Top del Livello A₁, sono state poi aggiunte le varie mappe di spessore per trovare i Top ed i Bottom dei livelli A₁ e A₂ (figura 4 - 5).



1.5 VALUTAZIONE IDROCARBURI IN POSTO

Partendo dalle mappe si é ottenuto per ciascun livello un valore di GBV come differenza tra il Top ed il Bottom nella zona di giacimento al di sopra del GWC.

Il G.B.V. calcolato per ogni livello è:

- LIVELLO A₁ 239.32 10⁶ m³
- LIVELLO A₂ 149.58 10⁶ m³

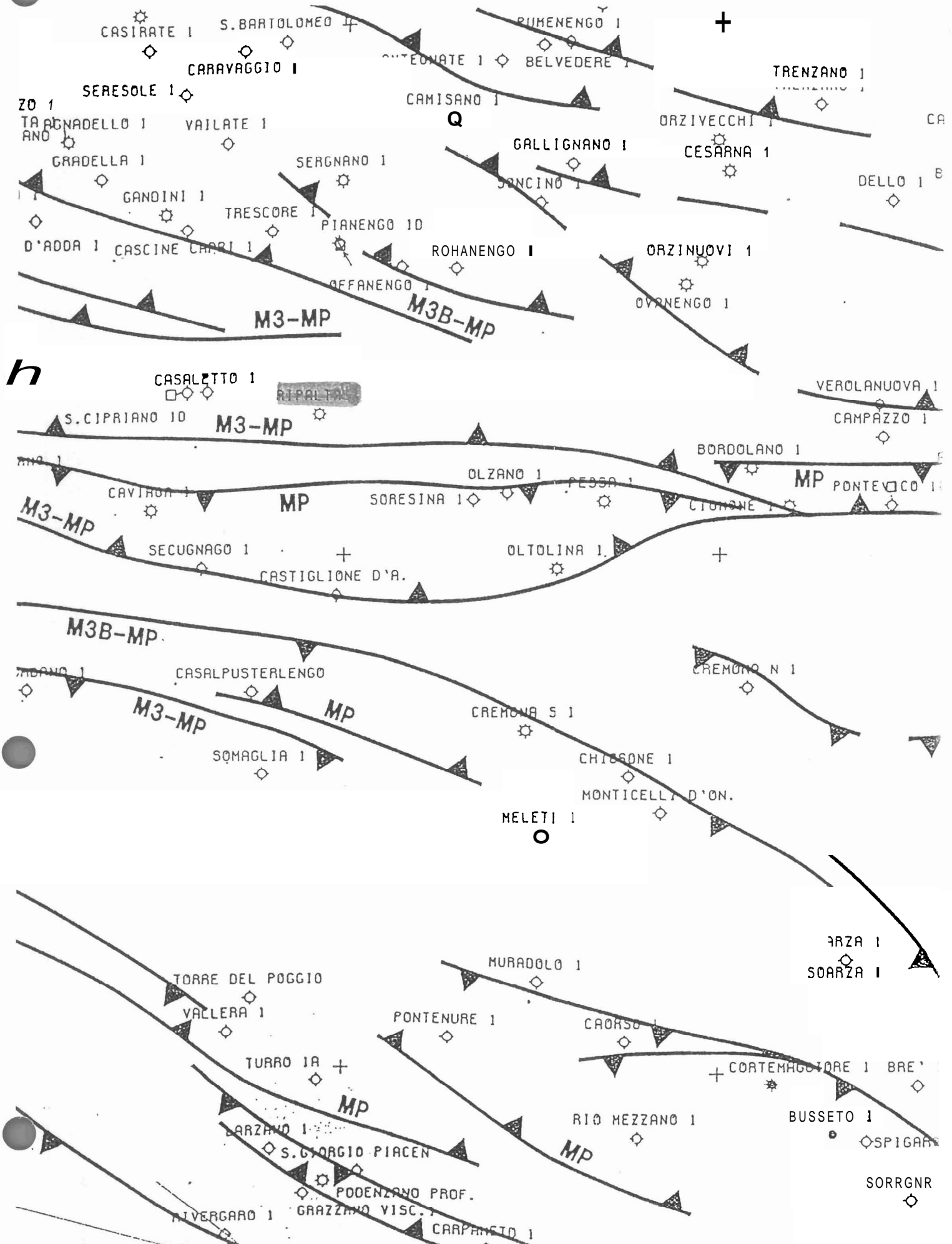
Queste superfici di GBV sono state poi moltiplicate per il valore medio di Net/Gross per ricavare dei valori di NBV che moltiplicati per la Phi, la S_g e divisi per il Fattore di Volume (B_g) hanno permesso di calcolare il GOIP ripartato alle condizioni standard.

In tabella 1 sono riportati i valori relativi ad ogni parametro nei due diversi livelli ed il GOIP ricavato.

CAMPO DI RIPALTA SCHEMA STRUTTURALE SCALA 1:250000



Fig. 1



CAMPO DI RIPALTA

ESEMPIO DI LOG

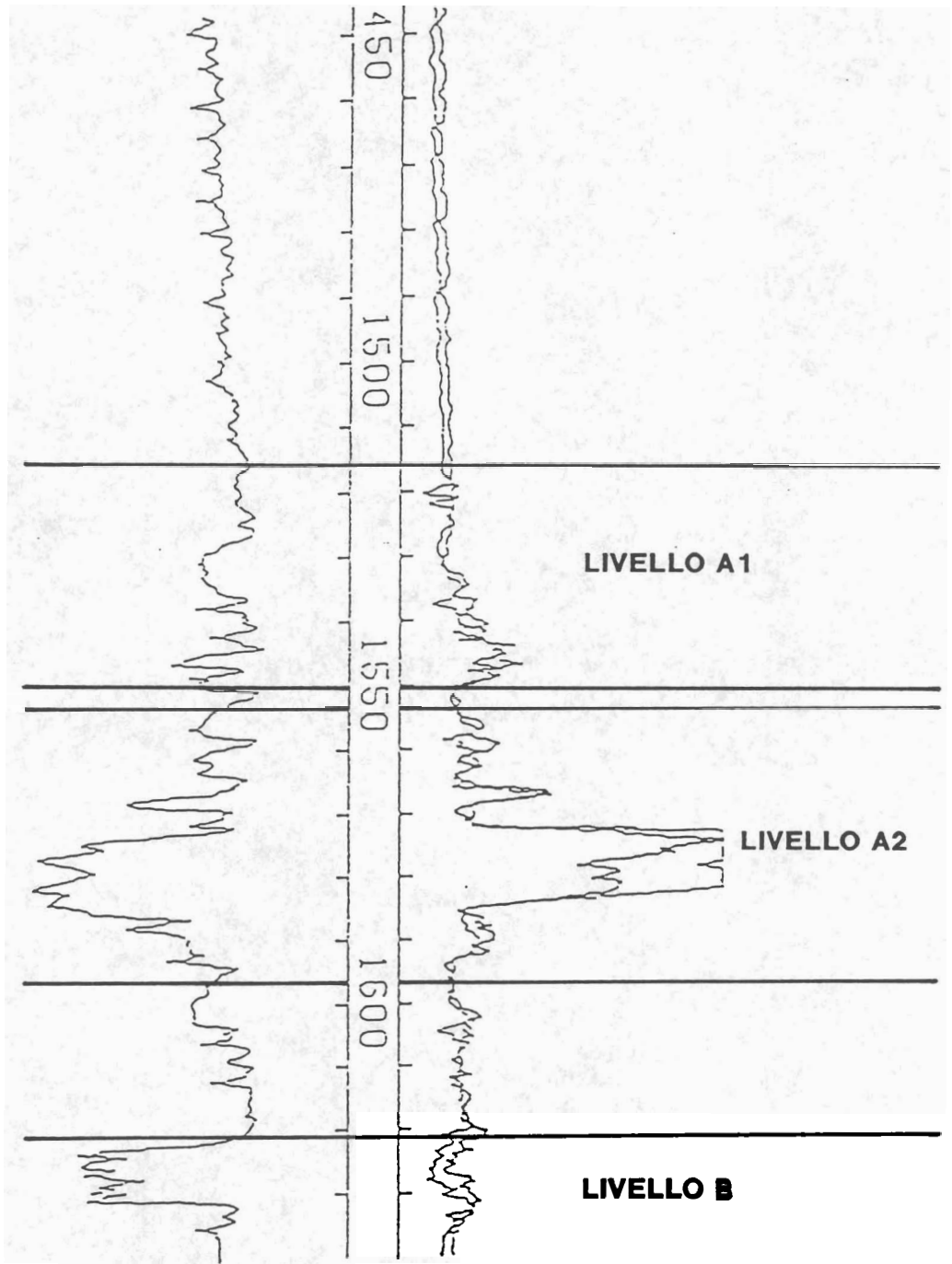
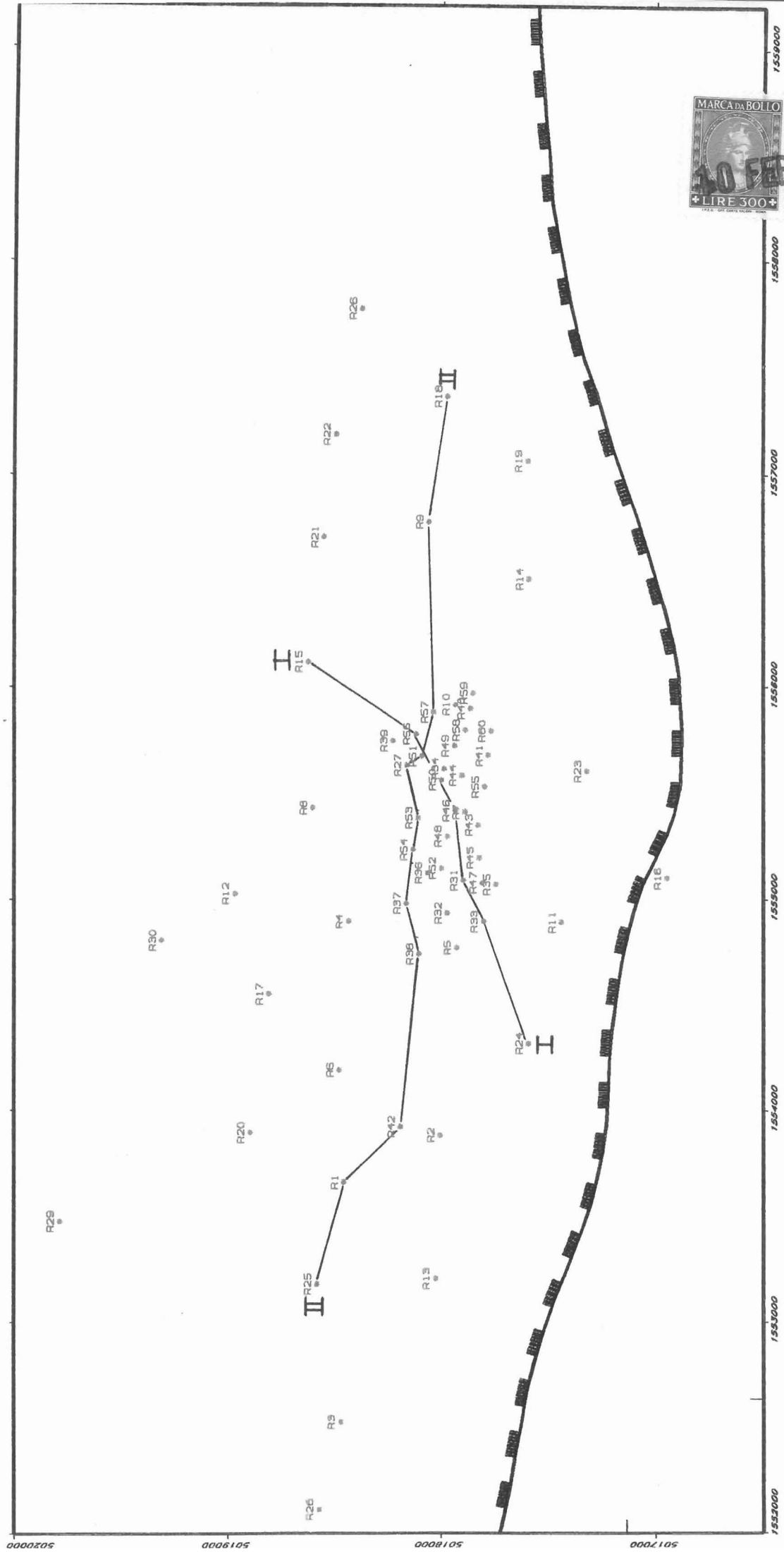
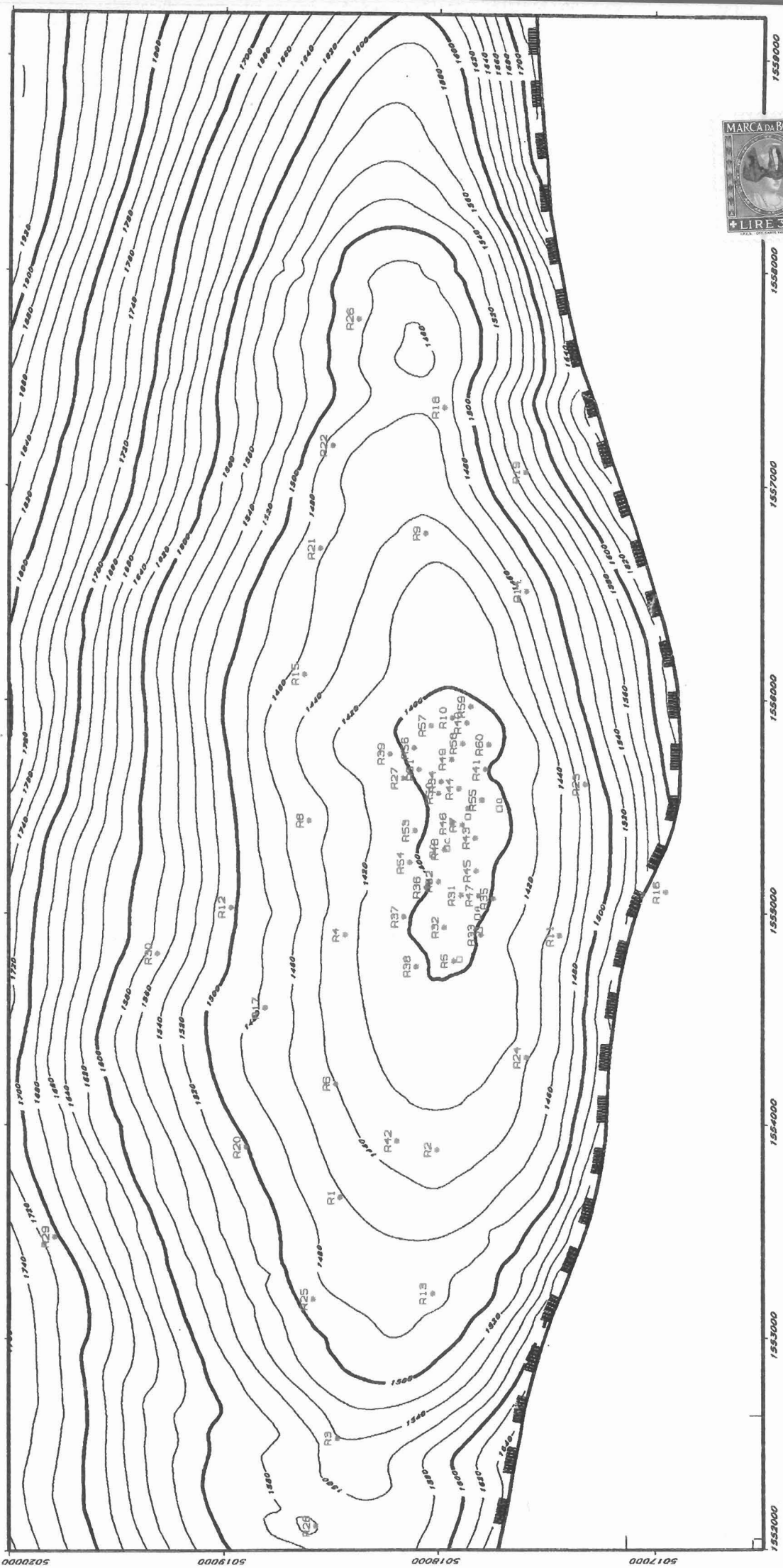


Fig. 3



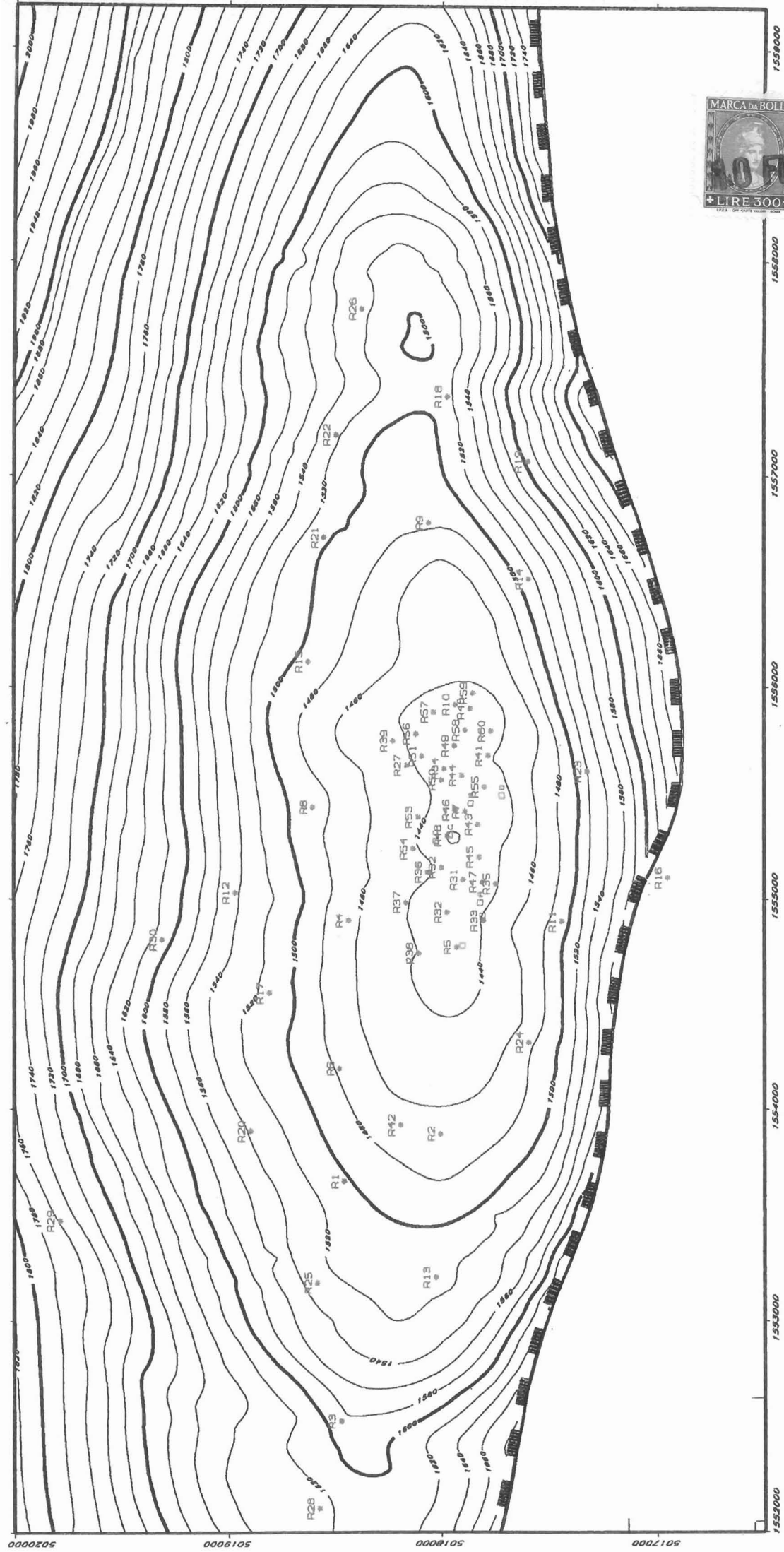
CAMPO DI RIPALTA - MAPPA INDICE DELLE SEZIONI- SCALA 1:25000

Fig. 4



CAMPO DI RIPALTA - TOP LIVELLO A1 - SCALA 1:25000

Fig. 5

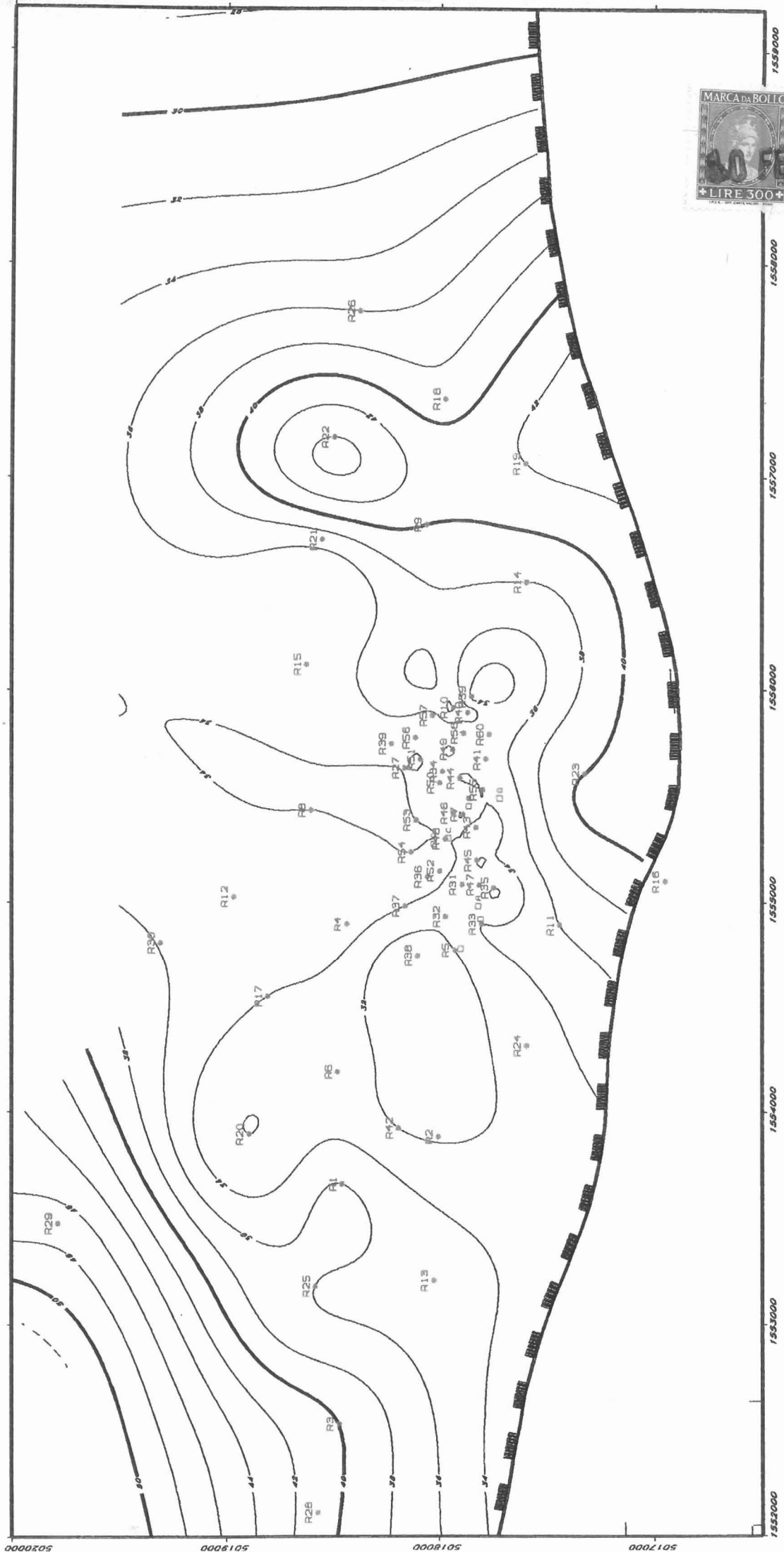


CAMPO DI RIPALTA - TOP LIVELLO A2 - SCALA 1:25000

5020000 5019000 5018000 5017000

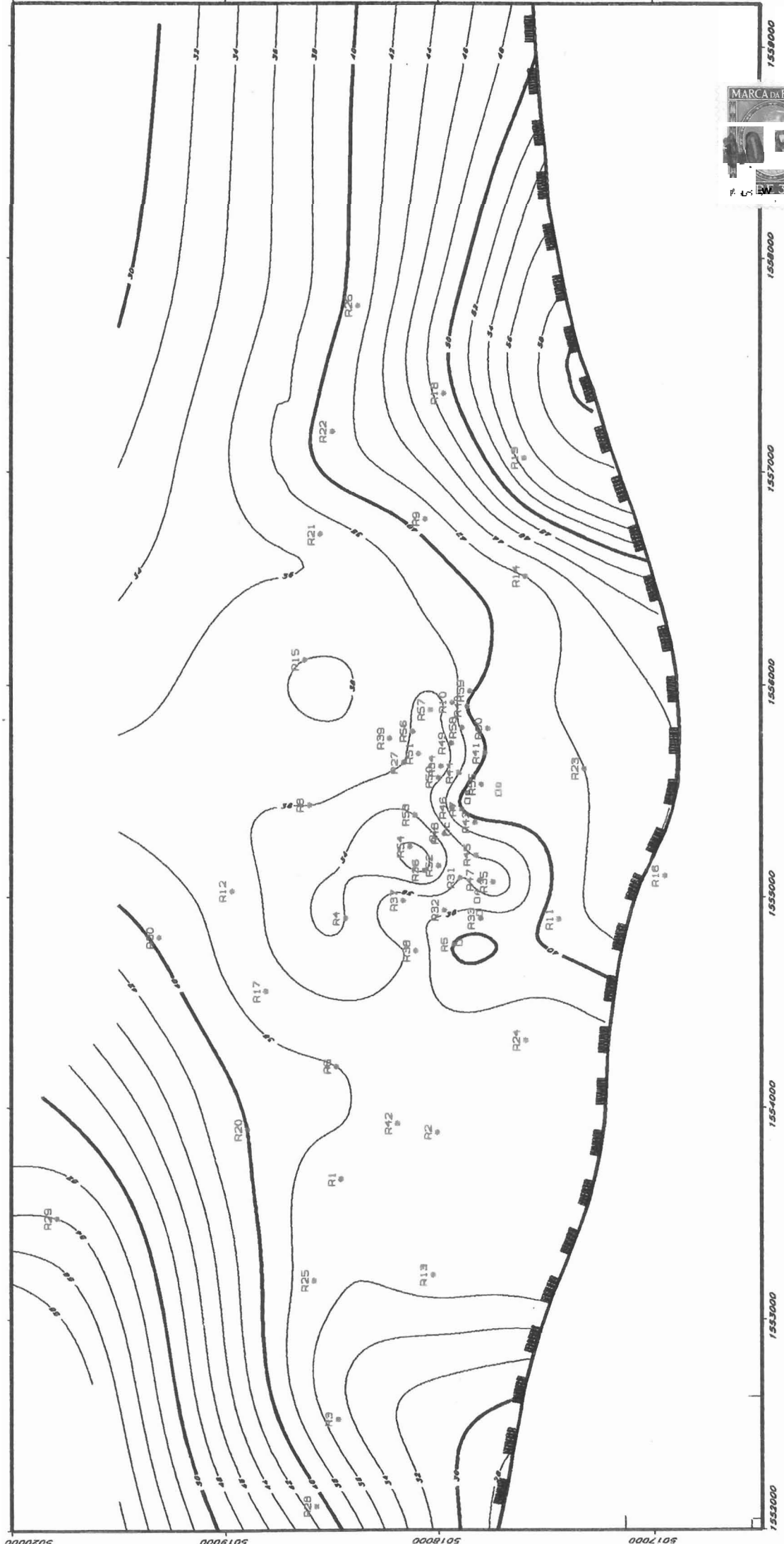
1552000 1553000 1554000 1555000 1556000 1557000 1558000

Fig. 6



CAMPO DI RIPALTA - SPESSORE LIVELLO A1 - SCALA 1:25000

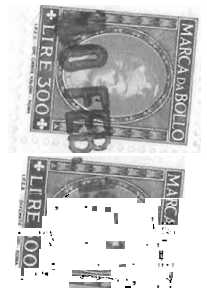
Fig. 7



CAMPO DI RIPALTA - SPESSORE LIVELLO A2 - SCALA 1:25000

**CAMPO DI RIPALTA
VOLUMETRICHE**

	Livello A1	Livello A2
G.W.C.O. avg (mssl)	1518	1518
G.B.V. (10 ⁶ m3)	239.32	149.58
N/G	0.19	0.40
Phi avg	0.25	0.25
Sw avg	0.20	0.20
Bg (m3/Sm3)	0.00545	0.00545
G.O.I.P. (10 ⁶ Sm3)	1668.65	2195.67
G.O.I.P TOTALE (10 ⁶ Sm3)	3864.32	





APPENDICE

DATI DI POZZO

G E O L O G I C A L T A B L E

NATION : 101 - ITALIA
FIELD : 127 - RIPALTA
LEVEL : 01 - A1

	RIPALTA 1	RIPALTA 3	RIPALTA 4	RIPALTA 5	RIPALTA 6	RIPALTA 7	RIPALTA 8	RIPALTA 9	RIPALTA 10	RIPALTA 11	RIPALTA 12	RIPALTA 13	RIPALTA 14	RIPALTA 15	RIPALTA 17
QRT M	76.0	77.0	77.0	77.0	79.0	76.0	65.0	68.5	64.0	77.0	78.0	79.0	63.0	65.0	78.0
TOP M/RT	1538.0	1619.0	1505.0	1476.0	1520.0	1465.0	1514.0	1504.0	1451.0	1525.0	1582.0	1554.0	1534.0	1519.0	1557.0
BOTTOM M/RT	1574.0	1659.0	1540.0	1508.0	1553.0	1501.0	1548.0	1544.0	1489.0	1561.0	1617.0	1589.0	1572.0	1554.0	1591.0
TOP M/SL	1462.0	1542.0	1428.0	1399.0	1441.0	1389.0	1449.0	1435.5	1387.0	1448.0	1504.0	1475.0	1471.0	1454.0	1479.0
BOTTOM M/SL	1498.0	1582.0	1463.0	1431.0	1474.0	1425.0	1483.0	1475.5	1425.0	1484.0	1539.0	1510.0	1509.0	1489.0	1513.0
HOLE DRIFT															
AZIMUTH OF HOLE															
DIP OF THE BED															
AZIMUTH OF DIP															
GR.THICK.MEA. M	36.0	40.0	35.0	32.0	33.0	36.0	34.0	40.0	38.0	36.0	35.0	35.0	38.0	35.0	34.0
NET THICK MEAS. M															
GR.THICK.APP. M	36.0	40.0	35.0	32.0	33.0	36.0	34.0	40.0	38.0	36.0	35.0	35.0	38.0	35.0	34.0
NET THICK APP. M															
GR.THICK.REA. M	36.0	40.0	35.0	32.0	33.0	36.0	34.0	40.0	38.0	36.0	35.0	35.0	38.0	35.0	34.0
NET THICK REAL. M															
GWC M/RT															
GDT M/RT															
WUT M/RT															
GOC M/RT															
OUT M/RT															
ODT M/RT															
OWC M/RT															
GWC M/SL															
GDT M/SL															
OUT M/SL															
ODT M/SL															
OWC M/SL															
GR. PAY MEAS. M															
NET PAY MEAS. M															
GR. PAY APP. M															
NET PAY APP. M															
GR. PAY REAL M															
NET PAY REAL M															
NET/GROSS (%)															
PHI (%)															
SW (%)															
EHC															
COORD. X	1553660.0	1552528.0	1554895.0	1554770.0	1554191.0	1555413.0	1555433.0	1556777.0	1555916.0	1554892.0	1555027.0	1553206.0	1556509.0	1556119.0	1554550.0
COORD. Y	5018456.0	5018472.0	5018434.0	5017926.0	5018477.0	5017886.0	5018602.0	5018056.0	5017931.0	5017440.0	5018967.0	5018025.0	5017591.0	5018623.0	5018809.0
REMARK															



GIAC

NATION : 101 - ITALIA
 FIELD : 127 - RIPALTA
 LEVEL : 01 - A1

	RIPALTA 18	RIPALTA 19	RIPALTA 20	RIPALTA 21	RIPALTA 22	RIPALTA 23	RIPALTA 24	RIPALTA 25	RIPALTA 26	RIPALTA 27	RIPALTA 28	RIPALTA 29	RIPALTA 31	RIPALTA 32	RIPALTA 33
QRT M	78.0	67.0	80.0	68.0	67.4	77.0	77.0	76.5	67.0	79.0	79.0	79.0	76.4	76.4	76.0
TOP W	1538.0	1625.0	1581.0	1532.0	1542.0	1552.0	1516.0	1567.0	1553.0	1484.0	1659.0	1785.0	1487.0	1486.0	1479.0
BOTTOM W	1577.0	1667.0	1613.0	1569.0	1586.0	1592.0	1549.0	1603.0	1589.0	1518.0	1700.0	1824.0	1520.0	1519.0	1513.0
TOP M/SL	1460.0	1558.0	1501.0	1464.0	1474.6	1475.0	1439.0	1490.5	1486.0	1405.0	1580.0	1706.0	1393.6	1396.4	1403.0
BOTTOM M/SL	1499.0	1600.0	1533.0	1501.0	1518.6	1515.0	1472.0	1526.5	1522.0	1439.0	1621.0	1745.0	1426.0	1429.0	1437.0
HOLE DRIFT															
AZIMUTH OF HOLE															
DIP OF THE BED															
AZIMUTH OP DIP															
GR.THICK.MEA. M	39.0	42.0	32.0	37.0	44.0	40.0	33.0	36.0	36.0	34.0	41.0	39.0	33.0	33.0	34.0
NET THICK MEAS. M															
GR.THICK.APP. M	39.0	42.0	32.0	37.0	44.0	40.0	33.0	36.0	36.0	34.0	41.0	39.0	33.0	33.0	34.0
NET THICK APP. M															
GR.THICK.REA. M	39.0	42.0	32.0	37.0	44.0	40.0	33.0	36.0	36.0	34.0	41.0	39.0	33.0	33.0	34.0
NET THICK REAL. M															
GWC M/RT															
GDT M/RT															
WUT M/RT															
GOC M/RT															
OUT M/RT															
ODT W															
OWC M/RT															
GWC M/SL															
GDT M/SL															
WUT M/SL															
GOC M/SL															
OUT M/SL															
ODT M/SL															
OWC M/SL															
GR. PAY MEAS. M															
NET PAY MEAS. M															
GR. PAY APP. M															
NET PAY APP. M															
GR. PAY REAL M															
NET PAY REAL M															
NET/GROSS (%)															
PHI (%)															
SW (%)															
EHC															
COORD. X	1557366.0	1557064.0	1553896.0	1556707.0	1557187.0	1555604.0	1554316.0	1553180.0	1557776.0	1555631.0	1552113.0	1553474.0	1555084.5	1554929.1	1554895.0
COORD. Y	5017969.0	5017596.0	5018897.0	5018550.0	5018493.0	5017319.0	5017592.0	5018583.0	5018373.0	5018159.0	5018574.0	5019788.0	5017892.0	5017968.0	5017801.0
REMARK															



NATION : 101 - ITALIA
 FIELD : 127 - RIPALTA
 LEVEL : 01 - A1

	RIPALTA 34	RIPALTA 35	RIPALTA 36	RIPALTA 37	RIPALTA 38	RIPALTA 39	RIPALTA 40	RIPALTA 41	RIPALTA 42	RIPALTA 43	RIPALTA 44	RIPALTA 45	RIPALTA 46	RIPALTA 47	RIPALTA 48
QRT M	78.0	78.0	78.0	78.0	78.0	78.0	78.0	78.0	81.0	81.0	81.0	81.0	81.0	81.0	81.0
TOP M/RT	1497.0	1487.0	1513.0	1535.0	1542.0	1591.0	1569.0	1505.0	1514.0	1486.0	1511.0	1492.0	1483.0	1502.0	1463.0
BOTTOM M/RT	1532.0	1519.0	1549.0	1569.0	1573.0	1626.0	1607.0	1540.0	1546.0	1519.0	1545.0	1526.0	1518.0	1536.0	1497.0
TOP M/SL	1393.2	1399.9	1402.0	1402.0	1403.7	1407.9	1387.7	1399.1	1433.0	1388.4	1388.8	1391.7	1391.4	1387.0	1382.0
BOTTOM M/SL	1428.1	1431.9	1437.0	1435.7	1434.5	1442.9	1425.3	1433.8	1465.0	1421.4	1422.8	1425.7	1426.3	1420.6	1416.0
HOLE DRIFT															
AZIMUTH OF HOLE															
DIP OF THE BED															
AZIMUTH OF DIP															
GR.THICK.MEA. M	35.0	32.0	36.0	34.0	31.0	35.0	38.0	35.0	32.0	33.0	34.0	34.0	35.0	34.0	34.0
NET THICK MEAS. M															
GR.THICK.APP. M	35.0	32.0	36.0	34.0	31.0	35.0	38.0	35.0	32.0	33.0	34.0	34.0	35.0	34.0	34.0
NET THICK APP. M															
GR.THICK.REA. M	35.0	32.0	36.0	34.0	31.0	35.0	38.0	35.0	32.0	33.0	34.0	34.0	35.0	34.0	34.0
NET THICK REAL. M															
GWC M/RT															
GDT M/RT															
GOC M/RT															
OUT M/RT															
ODT M/RT															
GWC M/SL															
Gm! M/SL															
WUT M/SL															
GOC M/SL															
OUT M/SL															
ODT M/SL															
OWC M/SL															
GR. PAY MEAS. M															
NET PAY MEAS. M															
GR. PAY APP. M															
NET PAY APP. M															
GR. PAY REAL M															
NET PAY REAL M															
NET/GROSS (%)															
PHI (%)															
SW (%)															
EHC															
COORD. X	1555615.1	1555068.8	1555119.9	1554981.5	1554743.6	1555745.3	1555892.1	1555673.9	1553923.0	1555351.4	1555582.3	1555197.6	1555418.3	1555082.4	1555298.0
COORD. Y	5017982.0	5017743.0	5018053.5	5018158.0	5018100.0	5018221.5	5017864.0	5017779.0	5018189.0	5017825.5	5017901.5	5017821.5	5017932.5	5017811.0	5018023.0
REMARK															



G E O L O G I C A L T A B L E

NATION : 101 - ITALIA
FIELD : 127 - RIPALTA
LEVEL : 01 - A1

	RIPALTA 49	RIPALTA 50	RIPALTA 51	RIPALTA 52	RIPALTA 53	RIPALTA 54	RIPALTA 55	RIPALTA 56	RIPALTA 57	RIPALTA 58	RIPALTA 59	RIPALTA 60
QRT M	83.0	83.0	83.0	83.0	83.0	83.0	81.0	81.0	81.0	81.0	81.0	81.0
TOP M/RT	1563.0	1519.0	1561.0	1492.0	1505.0	1498.0	1479.0	1580.0	1596.0	1533.0	1605.0	1324.0
BOTTOM M/RT	1599.0	1554.0	1595.0	1527.0	1539.0	1532.0	1513.0	1616.0	1632.0	1567.0	1639.0	1359.0
TOP M/SL	1388.8	1395.6	1396.0	1394.4	1405.2	1404.1	1391.4	1396.3	1389.4	1391.1	1392.1	1395.3
BOTTOM M/SL	1424.7	1430.5	1429.9	1429.4	1439.2	1438.1	1425.4	1431.5	1425.2	1425.0	1426.0	1430.2
HOLE DRIFT												
AZIMUTH OF HOLE												
DIP OF THE BED												
AZIMUTH OF DIP												
GR.THICK.MEA. M	35.0	35.0	34.0	35.0	34.0	34.0	34.0	36.0	35.0	34.0	34.0	35.0
NET THICK MEAS. M												
GR.THICK.APP. M	35.0	35.0	34.0	35.0	34.0	34.0	34.0	36.0	35.0	34.0	34.0	35.0
NET THICK APP. M												
GR.THICK.REA. M	35.0	35.0	34.0	35.0	34.0	34.0	34.0	36.0	35.0	34.0	34.0	35.0
NET THICK REAL. M												
GWC M/RT												
GDT M/RT												
WUT M/RT												
GOC M/RT												
OUT M/RT												
ODT M/RT												
OWC M/RT												
GWC M/SL												
GDT M/SL												
WUT M/SL												
GOC M/SL												
OUT M/SL												
ODT M/SL												
OWC M/SL												
GR. PAY MEAS. M												
NET PAY MEAS. M												
GR. PAY APP. M												
NET PAY APP. M												
GR. PAY REAL M												
NET PAY REAL M												
NET/GROSS (%)												
PHI (%)												
SW (%)												
EHC												
COORD. X	1555719.5	1555560.9	1555672.3	1555147.9	1555385.5	1555236.0	1555529.5	1555773.8	1555878.6	1555795.1	1555968.1	1555790.0
COORD. Y	5017934.5	5017995.0	5018086.0	5017996.0	5018106.0	518129.5	5017795.5	5018109.0	5018029.0	5017883.5	5017846.0	5017764.5
REMARK												



NATION : 101 - ITALIA
FIELD : 127 - RIPALTA
LEVEL : 02 - A2

	RIPALTA 1	RIPALTA 3	RIPALTA 4	RIPALTA 5	RIPALTA 6	RIPALTA 7	RIPALTA 8	RIPALTA 9	RIPALTA 10	RIPALTA 11	RIPALTA 12	RIPALTA 13	RIPALTA 14	RIPALTA 15	RIPALTA 17
QRT M	76.0	77.0	77.0	77.0	79.0	76.0	65.0	68.5	64.0	77.0	78.0	79.0	63.0	65.0	78.0
TOP M/RT	1579.0	1663.0	1544.0	1512.0	1557.0	1505.0	1553.0	1549.0	1495.0	1566.0	1621.0	1593.0	1577.0	1559.0	1595.0
BOTTOM M/RT	1616.0	1698.0	1578.0	1552.0	1595.0	1529.0	1589.0	1590.0	1532.0	1607.0	N.R.	1630.0	1619.0	1597.0	1632.0
TOP M/SL	1503.0	1586.0	1467.0	1435.0	1478.0	1429.0	1488.0	1480.5	1431.0	1489.0	1543.0	1514.0	1514.0	1494.0	1517.0
BOTTOM M/SL	1540.0	1621.0	1501.0	1475.0	1516.0	1453.0	1524.0	1521.5	1468.0	1530.0	N.R.	1551.0	1556.0	1532.0	1554.0
HOLE DRIFT															
AZIMUTH OF HOLE															
DIP OF THE BED															
AZIMUTH OF DIP															
GR.THICK.MEA. M	37.0	35.0	34.0	40.0	38.0	24.0	36.0	41.0	37.0	41.0		37.0	42.0	38.0	37.0
NET THICK MEAS. M															
GR.THICK.APP. M	37.0	35.0	34.0	40.0	38.0	24.0	36.0	41.0	37.0	41.0		37.0	42.0	38.0	37.0
NET THICK APP. M															
GR.THICK.REA. M	37.0	35.0	34.0	40.0	38.0	24.0	36.0	41.0	37.0	41.0		37.0	42.0	38.0	37.0
NET THICK REAL. M															
GWC M/RT															
GDT W															
WUT M/RT															
GOC M/RT															
OUT W															
ODT M/RT															
OWC M/RT															
GWC M/SL															
GDT M/SL															
WUT M/SL															
GOC M/SL															
OUT M/SL															
ODT M/SL															
OWC M/SL															
GR. PAY MEAS. M															
NET PAY MEAS. M															
GR. PAY APP. M															
NET PAY APP. M															
GR. PAY REAL M															
NET PAY REAL M															
NET/GROSS (%)															
PHI (%)															
SW (%)															
EHC															
COORD. X	1553660.0	1552528.0	1554895.0	1554770.0	1554191.0	1555413.0	1555433.0	1556777.0	1555916.0	1554892.0	1555027.0	1553206.0	1556509.0	1556119.0	1554550.0
COORD. Y	5018456.0	5018472.0	5018434.0	5017926.0	5018477.0	5017886.0	5018602.0	5018056.0	5017931.0	5017440.0	5018967.0	5018025.0	5017591.0	5018623.0	5018809.0
REMARK															



GIAC

NATION : 101 - ITALIA
 FIELD : 127 - RIPALTA
 LEVEL : 02 - A2

	RIPALTA 18	RIPALTA 19	RIPALTA 20	RIPALTA 21	RIPALTA 22	RIPALTA 23	RIPALTA 24	RIPALTA 25	RIPALTA 26	RIPALTA 27	RIPALTA 28	RIPALTA 29	RIPALTA 31	RIPALTA 32	RIPALTA 33
QRT M	78.0	67.0	80.0	68.0	67.4	77.0	77.0	76.5	67.0	79.0	79.0	79.0	76.4	76.4	76.0
TOP M/RT	1581.0	1674.0	1618.0	1573.0	1590.0	1597.0	1554.0	1608.0	1592.0	1523.0	1704.0	1829.0	1524.0	1523.0	1518.0
BOTTOM M/RT	1630.0	1729.0	1658.0	1610.0	1631.0	1639.0	1593.0	1645.0	1633.0	1559.0	1745.0	N.R.	1561.0	1561.0	1557.0
TOP M/SL	1503.0	1607.0	1538.0	1505.0	1522.6	1520.0	1477.0	1531.5	1525.0	1444.0	1625.0	1750.0	1429.9	1433.0	1442.0
BOTTOM M/SL	1552.0	1662.0	1578.0	1542.0	1563.6	1562.0	1516.0	1568.5	1566.0	1480.0	1666.0	N.R.	1466.2	1470.5	1481.0
HOLE DRIFT															
AZIMUTH OF HOLE															
DIP OF THE BED															
AZIMUTH OF DIP															
GR.THICK.MEA. M	49.0	55.0	40.0	37.0	41.0	42.0	39.0	37.0	41.0	36.0	41.0		37.0	38.0	39.0
NET THICK MEAS. M															
GR.THICK.APP. M	49.0	55.0	40.0	37.0	41.0	42.0	39.0	37.0	41.0	36.0	41.0		37.0	38.0	39.0
NET THICK APP. M															
GR.THICK.REA. H	49.0	55.0	40.0	37.0	41.0	42.0	39.0	37.0	41.0	36.0	41.0		37.0	38.0	39.0
NET THICK REAL, M															
GWC M/RT															
GDT M/RT															
WUT M/RT															
GOC M/RT															
OUT M/RT															
ODT M/RT															
OWC M/RT															
GWC M/SL															
GDT M/SL															
WUT M/SL															
GOC M/SL															
OUT M/SL															
ODT M/SL															
OWC M/SL															
GR. PAY MEAS. M															
NET PAY MEAS. M															
GR. PAY APP. M															
NET PAY APP. M															
GR. PAY REAL M															
NET PAY REAL M															
NET/GROSS (%)															
PHI (%)															
SW (%)															
EHC															
COORD. X	1557366.0	1557064.0	1553896.0	1556707.0	1557187.0	1555604.0	1554316.0	1553180.0	1557776.0	1555631.0	1552113.0	1553474.0	1555090.6	1554934.5	1554895.0
COORD. Y	5017969.0	5017596.0	5018897.0	5018550.0	5018493.0	5017319.0	5017592.0	5018583.0	5018373.0	5018159.0	5018574.0	5019788.0	5017895.5	5017970.0	5017801.0
REMARK															



GIAC

NATION : 101 - ITALIA
 FIELD : 127 - RIPALTA
 LEVEL : 02 - A2

	RIPALTA 34	RIPALTA 35	RIPALTA 36	RIPALTA 37	RIPALTA 38	RIPALTA 39	RIPALTA 40	RIPALTA 41	RIPALTA 42	RIPALTA 43	RIPALTA 44	RIPALTA 45	RIPALTA 46	RIPALTA 47	RIPALTA 48
QRT M	78.0	78.0	78.0	78.0	78.0	78.0	78.0	78.0	81.0	81.0	81.0	81.0	81.0	81.0	81.0
TOP W	1536.0	1523.0	1554.0	1574.0	1578.0	1630.0	1613.0	1544.0	1550.0	1525.0	1550.0	1530.0	1523.0	1542.0	1500.0
BOTTOM W	1571.0	1558.0	1587.0	1612.0	1615.0	1667.0	1653.0	1584.0	1587.0	N.R.	N.R.	N.R.	N.R.	N.R.	N.R.
TOP M/SL	1432.1	1435.9	1441.9	1440.7	1439.5	1446.9	1431.3	1437.8	1469.0	1427.4	1427.8	1429.7	1431.3	1426.5	1419.0
BOTTOM M/SL	1467.1	1470.9	1474.4	1478.4	1476.3	1483.8	1470.9	1477.6	1506.0	N.R.	N.R.	N.R.	N.R.	N.R.	N.R.
HOLE DRIFT															
AZIMUTH OF HOLE															
DIP OF THE BED															
AZIMUTH OF DIP															
GR.THICK.MEA. M	35.0	35.0	33.0	38.0	37.0	37.0	40.0	40.0	37.0						
NET THICK MEAS. M															
GR.THICK.APP. M	35.0	35.0	33.0	38.0	37.0	37.0	40.0	40.0	37.0						
NET THICK APP. M															
GR.THICK.REA. M	35.0	35.0	33.0	38.0	37.0	37.0	40.0	40.0	37.0						
NET THICK REAL. M															
GWC M/RT															
GDT M/RT															
WUT M/RT															
GOC M/RT															
OUT M/RT															
ODT M/RT															
OWC M/RT															
GWC M/SL															
GDT M/SL															
WUT M/SL															
GOC M/SL															
OUT M/SL															
ODT M/SL															
OWC M/SL															
GR. PAY MEAS. M															
NET PAY MEAS. M															
GR. PAY APP. M															
NET PAY APP. M															
GR. PAY REAL M															
NET PAY REAL M															
NET/GROSS (%)															
PHI (%)															
SW (%)															
EHC															
COORD. X	1555615.4	1555070.1	1555125.0	1554980.8	1554740.4	1555746.0	1555897.8	1555678.3	1553923.0	1555351.4	1555584.3	1555196.8	1555419.1	1555077.9	1555298.0
COORD. Y	5017983.5	5017742.5	5018061.5	5018162.5	5018103.0	5018223.5	5017861.5	5017778.0	5018189.0	5017825.5	5017901.0	5017820.5	5017932.0	5017807.0	5018023.0
REMARK															



G E O L O G I C A L T A B L E

NATION : 101 - ITALIA
FIELD : 127-RIPALTA
LEVEL : 02 - A2

	RIPALTA 49	RIPALTA 50	RIPALTA 51	RIPALTA 52	RIPALTA 53	RIPALTA 54	RIPALTA 55	RIPALTA 56	RIPALTA 57	RIPALTA 58	RIPALTA 59	RIPALTA 60
QRT M	83.0	83.0	83.0	83.0	83.0	83.0	81.0	81.0	81.0	81.0	81.0	81.0
TOP W	1603.0	1559.0	1600.0	1532.0	1544.0	1536.0	1518.0	1621.0	1637.0	1571.0	1645.0	1564.0
BOTTOM W	N.R.	N.R.	N.R.	N.R.	N.R.	N.R.	N.R.	N.R.	N.R.	N.R.	N.R.	N.R.
TOP M/SL	1428.7	1435.5	1434.9	1434.1	1444.2	1442.1	1430.4	1436.4	1430.2	1429.0	1432.0	1435.2
BOTTOM M/SL	N.R.	N.R.	N.R.	N.R.	N.R.	N.R.	N.R.	N.R.	N.R.	N.R.	N.R.	N.R.
HOLE DRIFT												
AZIMUTH OF HOLE												
DIP OF THE BED												
AZIMUTH OF DIP												
GR.THICK.MEA. M												
NET THICK MEAS. M												
GR.THICK.APP. M												
NET THICK APP. M												
GR.THICK.REA. M												
NET THICK REAL. M												
GDT M/RT												
WUT M/RT												
GOC M/RT												
OUT M/RT												
ODT M/RT												
OWC M/RT												
GWC M/SL												
GDT M/SL												
m M/SL												
GOC M/SL												
OUT M/SL												
ODT M/SL												
OWC M/SL												
GR. PAY MEAS. M												
NET PAY MEAS. M												
GR. PAY APP. M												
NET PAY APP. M												
GR. PAY REAL M												
NET PAY REAL M												
NET/GROSS (%)												
PHI (%)												
SW (%)												
EHC												
COORD. X	1555722.6	1555562.4	1555674.5	1555147.4	1555385.6	1555236.1	1555529.6	1555778.3	1555880.4	1555796.5	1555970.6	1555792.6
COORD. Y	5017935.0	5017996.0	5018087.5	5017996.0	5018106.0	5018130.0	5017796.5	5018116.5	5018032.5	5017885.5	5017848.5	5017765.5
REMARK												



RIPALTA 1 (22/ 3/1949-31/ 5/1961)

COORDINATES : NORTH 1553660.00
EAST 5018456.00

PLATFORM : *****

DRILLING PERIOD : 18/11/47-21/3/49

TOTAL DEPTH 1636.00 M R.T.

TOP OF CEMENT PLUG : 0.00 M R.T.

ROTARY TABLE 76.00 M above S.L.
FIRST FLANGE 0.00 M below G.L.
GROUND LEVEL 0.00 M above S.L.



CASING PROFILE : 18" 5/ 8 at 116.40 M R.T.
13" 3/ 8 at 598.27 M R.T.
9" 5/ 8 at 1600.00 M R.T.

TUBING SHOE(S) : 2" 7/ 8 at 1500.00 M R.T.

PERFORATED INTERVALS :
LEVEL

1545.50 - 1592.00 M R.T. (1469.50 - 1516.00 M SSL) P G T O

REMARKS :

P = Production I = Injection
O = Oil G = Gas W = Water
S = Short L = Long T = Tbg
C = Shutin O = Open A = Squeezed

RIPALTA 1 (1/ 6/1961-16/ 6/1967)

COORDINATES : NORTH 1553660.00
EAST 5018456.00

PLATFORM : *****

DRILLING PERIOD : 18/11/47-21/3/49

TOTAL DEPTH 1636.00 M R.T.

TOP OF CEMENT PLUG : 0.00 M R.T.

ROTARY TABLE 76.00 M above S.L.
FIRST FLANGE 0.00 M below G.L.
GROUND LEVEL 0.00 M above S.L.

CASING PROFILE : 18" 5/ 8 at 116.40 M R.T.
13" 3/ 8 at 598.27 M R.T.
9" 5/ 8 at 1600.00 M R.T.

TUBING SHOE(S) : 2" 7/ 8 at 1335.05 M R.T.

PERFORATED INTERVALS :
LEVEL

1344.00 - 1348.00 M R.T. (1268.00 - 1272.00 M SSL) P G T O
1545.50 - 1592.00 M R.T. (1469.50 - 1516.00 M SSL) P G T C

REMARKS : CHIUSURA LIVELLO A - APERTURA LIVELLO C

P = Production I = Injection
O = Oil G = Gas W = Water
S = Short L = Long T = Tbg
C = Shutin O = Open A = Squeezed



RIPALTA 1 (17/ 6/1967-)

COORDINATES : NORTH 1553660.00
EAST 5018456.00

PLATFORM : *****

DRILLING PERIOD : 18/11/47-21/3/49

TOTAL DEPTH 1636.00 M R.T.

TOP OF CEMENT PLUG : 0.00 M R.T.

ROTARY TABLE 76.00 M above S.L.

FIRST FLANGE 0.00 M below G.L.

GROUND LEVEL 0.00 M above S.L.

CASING PROFILE : 18" 5/ 8 at 116.40 M R.T.
13" 3/ 8 at 598.27 M R.T.
9" 5/ 8 at 1600.00 M R.T.

PERFORATED INTERVALS :
LEVEL

1344.00 - 1348.00 M R.T. (1268.00 - 1272.00 M SSL) P G T C
1545.50 - 1592.00 M R.T. (1469.50 - 1516.00 M SSL) P G T C

REMARKS : CHIUSURA MINERARIA

P = Production I = injection
O = Oil G = Gas W = Water
S = Short L = Long T = Tbg
C = Shutin O = Open A = Squeezed



RIPALTA 2 (28/11/1952-21/ 3/1984)

COORDINATES : NORTH 1555916.00
EAST 5017931.00

PLATFORM : *****

DRILLING PERIOD : 20/10/48-8/3/52

TOTAL DEPTH 1182.00 M R.T.

TOP OF CEMENT PLUG : 0.00 M R.T.

ROTARY TABLE 76.00 M above S.L.

FIRST FLANGE 0.00 M below G.L.

GROUND LEVEL 0.00 M above S.L.

CASING PROFILE : 14" 0/ 0 at 51.00 M R.T.
9" 5/ 8 at 738.00 M R.T.
6" 5/ 8 at 1200.20 M R.T.

TUBING SHOE(S) : 2" 7/ 8 at 1600.00 M R.T.

PERFORATED INTERVALS :

1510.00 - 1593.00 M R.T. (1434.00 - 1517.00 M SSL) P G T O

REMARKS : MESSA IN PRODUZIONE DALLE ASTE 3"1/2 PERFORATE A 1558 M

P = Production I = Injection
O = Oil G = Gas W = Water
S = Short L = Long T = Tbg
C = Shutin O = Open A = Squeezed



h RIPALTA 2 (22/ 3/1984-)

COORDINATES : NORTH 1555916.00
EAST 5017931.00

PLATFORM . *****

DRILLING PERIOD : 20/10/48-8/3/52

TOTAL DEPTH 1182.00 M R.T.

TOP OF CEMENT PLUG : 0.00 M R.T.

ROTARY TABLE 76.00 M above S.L.
FIRST FLANGE 0.00 M below G.L.
GROUND LEVEL 0.00 M above S.L.

CASING PROFILE : 14" 0/ 0 at 51.00 M R.T.
9" 5/ 8 at 738.00 M R.T.
6" 5/ 8 at 1200.20 M R.T.

PERFORATED INTERVALS :

1510.00 - 1593.00 M R.T. (1434.00 - 1517.00 M SSL) P G T C

REMARKS : CHIUSURA MINERARIA

P = Production I = Injection
O = Oil G = Gas W = Water
S = Short L = Long T = Tbg
C = Shutin O = Open A = Squeezed



RIPALTA 3

(30/ 4/1950- 9/ 1/1984)

COORDINATES : NORTH 0.00
EAST 0.00

PLATFORM - *****

DRILLING PERIOD : 18/8/49-29/4/50

TOTAL DEPTH 1750.00 M R.T.

TOP OF CEMENT PLUG : 0.00 M R.T.

ROTARY TABLE 77.00 M above S.L.
FIRST FLANGE 0.00 M below G.L.
GROUND LEVEL 0.00 M above S.L.

CASING PROFILE : 18" 5/ 8 at 14.50 M R.T.
13" 3/ 8 at 241.60 M R.T.
9" 5/ 8 at 1188.03 M R.T.

LINER : 4" 1/ 2 from 544.85 to 1947.00 M R.T.

TUBING SHOE(S) : 2" 7/ 8 at 304.84 M R.T.

PERFORATED INTERVALS :
LEVEL

280.00 - 310.00 M R.T. (203.00 - 233.00 M SSL) P G T O

REMARKS : POZZO INCIDENTATO - POZZO SPIA

P = Production I = Injection
O = Oil G = Gas W = Water
S = Short L = Long T = Tbg
C = Shutin O = Open A = Squeezed



RIPALTA 3 (10/ 1/1984-)

COORDINATES : NORTH 0.00
EAST 0.00

PLATFORM : *****

DRILLING PERIOD : 18/8/49-29/4/50

TOTAL DEPTH 1750.00 M R.T.

TOP OF CEMENT PLUG : 0.00 M R.T.

ROTARY TABLE 77.00 M above S.L.

FIRST FLANGE 0.00 M below G.L.

GROUND LEVEL 0.00 M above S.L.

CASING PROFILE : 18" 5/ 8 at 14.50 M R.T.
13" 3/ 8 at 241.60 M R.T.
9" 5/ 8 at 1188.03 M R.T.

LINER : 4" 1/ 2 from 544.85 to 1947.00 M R.T.

PERFORATED INTERVALS :
LEVEL

280.00 - 310.00 M R.T. (203.00 - 233.00 M SSL) P G T C

REMARKS : CHIUSURA MINERARIA

P = Production I = Injection
O = Oil G = Gas W = Water
S = Short L = Long T = Tbg
C = Shutin O = Open A = Squeezed



RIPALTA 4

(29/ 7/1950-25/ 7/1960)

COORDINATES : NORTH 0.00
EAST 0.00

PLATFORM : *****

DRILLING PERIOD : 14/4/50-28/7/50

TOTAL DEPTH 1600.00 M R.T.

TOP OF CEMENT PLUG : 0.00 M R.T.

ROTARY TABLE 77.00 M above S.L.
FIRST FLANGE 0.00 M below G.L.
GROUND LEVEL 0.00 M above S.L.

CASING PROFILE : 18" 5/ 8 at 25.70 M R.T.
13" 3/ 8 at 443.30 M R.T.
9" 5/ 8 at 1120.70 M R.T.
6" 5/ 8 at 1596.10 M R.T.

TUBING SHOE(S) : 2" 7/ 8 at 1560.60 M R.T.

PERFORATED INTERVALS :

LEVEL

1561.00 - 1579.50 M R.T. (1484.00 - 1502.50 M SSL) P G T O

REMARKS :

P = Production I = Injection
O = Oil G = Gas W = Water
S = Short L = Long T = Tbg
C = Shutin O = Open A = Squeezed



RIPALTA 4

(26/ 7/1960-14/10/1962)

COORDINATES : NORTH 0.00
EAST 0.00

PLATFORM • *****

DRILLING PERIOD : 14/4/50-28/7/50

TOTAL DEPTH 1600.00 M R.T.

TOP OF CEMENT PLUG : 0.00 M R.T.

ROTARY TABLE 77.00 M above S.L.
FIRST FLANGE 0.00 M below G.L.
GROUND LEVEL 0.00 M above S.L.

CASING PROFILE : 18" 5/ 8 at 25.70 M R.T.
13" 3/ 8 at 443.30 M R.T.
9" 5/ 8 at 1120.70 M R.T.
6" 5/ 8 at 1596.10 M R.T.

TUBING SHOE(S) : 3" 1/ 2 at 1494.00 M R.T.



PERFORATED INTERVALS :

LEVEL

1505.00 - 1526.50 M R.T. (1428.00 - 1449.50 M SSL) P G T O
1545.50 - 1557.50 M R.T. (1468.50 - 1480.50 M SSL) P G T O
1561.00 - 1579.50 M R.T. (1484.00 - 1502.50 M SSL) P G T O

REMARKS : ESTENSIONE SPARI - CAMBIO TUBING

P = Production I = Injection
O = Oil G = Gas W = Water
S = Short L = Long T = Tbg
C = Shutin O = Open A = Squeezed

RIPALTA 4 (15/10/1962- 5/10/1974)

COORDINATES : NORTH 0.00
EAST 0.00

PLATFORM : *****

DRILLING PERIOD : 14/4/50-28/7/50

TOTAL DEPTH 1600.00 M R.T.

TOP OF CEMENT PLUG : 0.00 M R.T.

ROTARY TABLE 77.00 M above S.L.

FIRST FLANGE 0.00 M below G.L.

GROUND LEVEL 0.00 M above S.L.

CASING PROFILE : 18" 5/8 at 25.70 M R.T.
13" 3/8 at 443.30 M R.T.
9" 5/8 at 1120.70 M R.T.
6" 5/8 at 1596.10 M R.T.

TUBING SHOE(S) : 3" 1/2 at 1494.00 M R.T.

PERFORATED INTERVALS :

LEVEL

1505.00 - 1513.50 M R.T. (1428.00 - 1436.50 M SSL) P G T O
1514.00 - 1526.50 M R.T. (1437.00 - 1449.50 M SSL) P G T C
1545.50 - 1557.50 M R.T. (1468.50 - 1480.50 M SSL) P G T C
1561.50 - 1579.50 M R.T. (1484.50 - 1502.50 M SSL) P G T C

REMARKS : PARZIALIZZAZIONE SPARI

P = Production I = Injection W = Water
O = Oil G = Gas T = Tbg
S = Short L = Long A = Squeezed
C = Shutin O = Open



RIPALTA 4

(6/10/1974-17/ 5/1991)

COORDINATES : NORTH 0.00
EAST 0.00

PLATFORM : *****

DRILLING PERIOD : 14/4/50-28/7/50

TOTAL DEPTH 1600.00 M R.T.

TOP OF CEMENT PLUG 0.00 M R.T.

ROTARY TABLE 77.00 M above S.L.

FIRST FLANGE 0.00 M below G.L.

GROUND LEVEL 0.00 M above S.L.

CASING PROFILE : 18" 5/ 8 at 25.70 M R.T.
13" 3/ 8 at 443.30 M R.T.
9" 5/ 8 at 1120.75 M R.T.
6" 5/ 8 at 1596.10 M R.T.

TUBING SHOE(S) : 3" 1/ 2 at 1491.00 M R.T.

PERFORATED INTERVALS :

1505.00 - 1526.50 M R.T.	(1428.00 - 1449.50 M SSL)	P G T O
1545.50 - 1557.50 M R.T.	(1468.50 - 1480.50 M SSL)	P G T O
1561.00 - 1579.50 M R.T.	(1484.00 - 1502.50 M SSL)	P G T O

REMARKS : RIMESSA IN PRODUZIONE SPARI PROFONDI

P = Production	I = Injection	
O = Oil	G = Gas	W = Water
S = Short	L = Long	T = Tbg
C = Shutin	O = Open	A = Squeezed



RIPALTA 4 (18/ 5/1991-)

COORDINATES : NORTH 0.00
EAST 0.00

PLATFORM : *****

DRILLING PERIOD : 14/4/50-28/7/50

TOTAL DEPTH 1600.00 M R.T.

TOP OF CEMENT PLUG : 0.00 M R.T.

ROTARY TABLE 77.00 M above S.L.
FIRST FLANGE 0.00 M below G.L.
GROUND LEVEL 0.00 M above S.L.

CASING PROFILE : 18" 5/ 8 at 25.70 M R.T.
13" 3/ 8 at 443.30 M R.T.
9" 5/ 8 at 1120.75 M R.T.
6" 5/ 8 at 1596.10 M R.T.

PERFORATED INTERVALS :

LEVEL

1505.00	-	1526.50	M	R.T.	(1428.00	-	1449.50	M	SSL)	P	G	T	C
1545.50	-	1557.50	M	R.T.	(1468.50	-	1480.50	M	SSL)	P	G	T	C
1561.00	-	1579.50	M	R.T.	(1484.00	-	1502.50	M	SSL)	P	G	T	C

REMARKS : CHIUSURA MINERARIA

P = Production	I = Injection	
O = Oil	G = Gas	W = Water
S = Short	L = Long	T = Tbg
C = Shutin	O = Open	A = Squeezed



RIPALTA 5 (3/ 8/1950-30/ 7/1960)

COORDINATES : NORTH 0.00
EAST 0.00

PLATFORM : *****

DRILLING PERIOD : 17/5/50-2/8/50

TOTAL DEPTH 1555.00 M R.T.

TOP OF CEMENT PLUG : 0.00 M R.T.

ROTARY TABLE 77.00 M above S.L.
FIRST FLANGE 0.00 M below G.L.
GROUND LEVEL 0.00 M above S.L.

CASING PROFILE : 18" 5/ 8 at 27.76 M R.T.
13" 3/ 8 at 354.28 M R.T.
9" 5/ 8 at 1160.00 M R.T.
6" 5/ 8 at 1564.00 M R.T.

TUBING SHOE(S) : 2" 7/ 8 at 1532.85 M R.T.

PERFORATED INTERVALS :
LEVEL

1533.50 - 1554.50 M R.T. (1456.50 - 1477.50 M SSL) P G T O

REMARKS :

P = Production I = Injection
O = Oil G = Gas W = Water
S = Short L = Long T = Tbg
C = Shutin O = Open A = Squeezed



RIPALTA 5

(31/ 7/1960-31/10/1985)

COORDINATES : NORTH 0.00
EAST 0.00

PLATFORM : *****

DRILLING PERIOD : 17/5/50-2/8/50

TOTAL DEPTH 1555.00 M R.T.

TOP OF CEMENT PLUG : 0.00 M R.T.

ROTARY TABLE 77.00 M above S.L.

FIRST FLANGE 0.00 M below G.L.

GROUND LEVEL 0.00 M above S.L.

CASING PROFILE : 18" 5/ 8 at 27.76 M R.T.
13" 3/ 8 at 354.28 M R.T.
9" 5/ 8 at 1160.00 M R.T.
6" 5/ 8 at 1564.00 M R.T.

TUBING SHOE(S) : 3" 1/ 2 at 1468.18 M R.T.

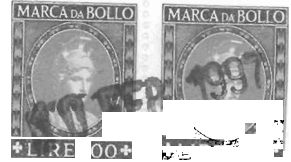
PERFORATED INTERVALS :

LEVEL

1477.00 - 1527.50 M R.T. (1400.00 - 1450.50 M SSL) P G T O
1533.50 - 1554.50 M R.T. (1456.50 - 1477.50 M SSL) P G T O

REMARKS : ESTENSIONE SPARI - CAMBIO TUBING
STIMOLAZIONE CON ACIDO (4/1965)

P = Production I = injection
O = Oil G = Gas W = Water
S = Short L = Long T = Tbg
C = Shutin O = Open A = Squeezed



RIPALTA 5 (1/11/1985-)

COORDINATES : NORTH 0.00
EAST 0.00

PLATFORM : *****

DRILLING PERIOD : 17/5/50-2/8/50

TOTAL DEPTH 1555.00 M R.T.

TOP OF CEMENT PLUG : 0.00 M R.T.

ROTARY TABLE 77.00 M above S.L.
FIRST FLANGE 0.00 M below G.L.
GROUND LEVEL 0.00 M above S.L.

CASING PROFILE : 18" 5/8 at 27.76 M R.T.
13" 3/8 at 354.28 M R.T.
9" 5/8 at 1160.00 M R.T.
6" 5/8 at 1564.00 M R.T.

TUBING SHOE(S) : 3" 1/2 at 1461.56 M R.T.

PERFORATED INTERVALS :

LEVEL

1477.00 - 1527.50 M R.T. (1400.00 - 1450.50 M SSL) P G T O
1533.50 - 1554.50 M R.T. (1456.50 - 1477.50 M SSL) P G T O

REMARKS : RICOMPLETAMENTO

P = Production I = Injection
O = Oil G = Gas W = Water
S = Short L = Long T = Tbg
C = Shutin O = Open A = Squeezed



RIPALTA 6

(22/ 1/1951-28/ 2/1958)

COORDINATES : NORTH 0.00
EAST 0.00

PLATFORM . *****

DRILLING PERIOD : 19/11/50-21/1/51

TOTAL DEPTH 1620.00 M R.T.

TOP OF CEMENT PLUG : 0.00 M R.T.

ROTARY TABLE 79.00 M above S.L.

FIRST FLANGE 0.00 M below G.L.

GROUND LEVEL 0.00 M above S.L.

CASING PROFILE : 18" 5/ 8 at 46.60 M R.T.
13" 3/ 8 at 352.58 M R.T.
9" 5/ 8 at 1154.25 M R.T.
6" 5/ 8 at 1614.60 M R.T.

TUBING SHOE(S) : 2" 7 / 8 at 1554.00 M R.T.

PERFORATED INTERVALS :

1580.00 - 1589.00 M R.T. (1501.00 - 1510.00 M SSL) P G T O

REMARKS :

P = Production I = Injection
O = Oil G = Gas W = Water
S = Short L = Long T = Tbg
C = Shutin O = Open A = Squeezed



RIPALTA 6

(1/ 3/1958-15/ 4/1959)

COORDINATES : NORTH 0.00
EAST 0.00

PLATFORM . *****

DRILLING PERIOD : 19/11/50-21/1/51

TOTAL DEPTH 1620.00 M R.T.

TOP OF CEMENT PLUG : 0.00 M R.T.

ROTARY TABLE 79.00 M above S.L.
FIRST FLANGE 0.00 M below G.L.
GROUND LEVEL 0.00 M above S.L.

CASING PROFILE : 18" 5/ 8 at 46.60 M R.T.
13" 3/ 8 at 352.58 M R.T.
9" 5/ 8 at 1154.25 M R.T.
6" 5 / 8 at 1614.60 M R.T.

BRIDGE PLUG : 6" 5/ 8 at 1577.00 M R.T.

TUBING SHOE(S) : 2" 7/ 8 at 1554.00 M R.T.

PERFORATED INTERVALS :

1564.00 - 1575.00 M R.T. (1485.00 - 1496.00 M SSL) P G T O
1580.00 - 1589.00 M R.T. (1501.00 - 1510.00 M SSL) P G T C

REMARKS : APERTURA INTERVALLO 1564 - 1575 MRT

P = Production I = Injection
O = Oil G = Gas W = Water
S = Short L = Long T = Tbg
C = Shutin O = Open A = Squeezed



RIPALTA 6

(16/ 4/1959-23/ 3/1966)

COORDINATES : NORTH 0.00
EAST 0.00

PLATFORM : *****

DRILLING PERIOD : 19/11/50-21/1/51

TOTAL DEPTH 1620.00 M R.T.

TOP OF CEMENT PLUG : 0.00 M R.T.

ROTARY TABLE 79.00 M above S.L.

FIRST FLANGE 0.00 M below G.L.

GROUND LEVEL 0.00 M above S.L.

CASING PROFILE : 18" 5/ 8 at 46.60 M R.T.
13" 3/ 8 at 352.58 M R.T.
9" 5/ 8 at 1154.25 M R.T.
6" 5/ 8 at 1614.60 M R.T.

BRIDGE PLUG : 6" 5/ 8 at 1561.00 M R.T.
6" 5/ 8 at 1577.00 M R.T.

TUBING SHOE(S) : 2" 7/ 8 at 1500.00 M R.T.

PERFORATED INTERVALS :

1527.00 - 1553.00 M R.T. (1448.00 - 1474.00 M SSL) P G T O
1564.00 - 1575.00 M R.T. (1485.00 - 1496.00 M SSL) P G T C
1580.00 - 1589.00 M R.T. (1501.00 - 1510.00 M SSL) P G T C

REMARKS : APERTURA INTERVALLO 1527 - 1553 MRT

P = Production I = Injection
O = Oil G = Gas W = Water
S = Short L = Long T = Tbg
C = Shutin O = Open A = Squeezed



RIPALTA 6

(24/ 3/1966-17/ 8/1971)

COORDINATES : NORTH 0.00
EAST 0.00

PLATFORM : *****

DRILLING PERIOD : 19/11/50-21/1/51

TOTAL DEPTH 1620.00 M R.T.

TOP OF CEMENT PLUG : 0.00 M R.T.

ROTARY TABLE 79.00 M above S.L.
FIRST FLANGE 0.00 M below G.L.
GROUND LEVEL 0.00 M above S.L.

CASING PROFILE : 18" 5/ 8 at 46.60 M R.T.
13" 3/ 8 at 352.58 M R.T.
9" 5/ 8 at 1154.25 M R.T.
6" 5/ 8 at 1614.60 M R.T.

BRIDGE PLUG : 6" 5/ 8 at 1355.00 M R.T.
6" 5/ 8 at 1561.00 M R.T.
6" 5/ 8 at 1577.00 M R.T.

PACKER(S) : 6" 5/ 8 at 1323.80 M R.T.

TUBING SHOE(S) : 2" 7/ 8 at 1337.90 M R.T.

PERFORATED INTERVALS :

1329.00 - 1339.00 M R.T.	(1250.00 - 1260.00 M SSL)	P	G	T	O
1527.00 - 1553.00 M R.T.	(1448.00 - 1474.00 M SSL)	P	G	T	C
1564.00 - 1575.00 M R.T.	(1485.00 - 1496.00 M SSL)	P	G	T	C
1580.00 - 1589.00 M R.T.	(1501.00 - 1510.00 M SSL)	P	G	T	C

REMARKS : CHIUSURA LIVELLO A - APERTURA LIVELLO C

P = Production	I = Injection	
O = Oil	G = Gas	W = Water
S = Short	L = Long	T = Tbg
C = Shutin	O = Open	A = Squeezed



RIPALTA 6 (18/ 8/1971-)

COORDINATES : NORTH 0.00
EAST 0.00

PLATFORM : *****

DRILLING PERIOD : 19/11/50-21/1/51

TOTAL DEPTH 1620.00 M R.T.

TOP OF CEMENT PLUG : 0.00 M R.T.

ROTARY TABLE 79.00 M above S.L.

FIRST FLANGE 0.00 M below G.L.

GROUND LEVEL 0.00 M above S.L.

CASING PROFILE : 18" 5/ 8 at 46.60 M R.T.
13" 3/ 8 at 352.58 M R.T.
9" 5/ 8 at 1154.25 M R.T.
6" 5/ 8 at 1614.60 M R.T.

PACKER(S) : 6" 5/ 8 at 1305.81 M R.T.
6" 5/ 8 at 1504.04 M R.T.

TUBING SHOE(S) : 2" 7/ 8 at 1518.51 M R.T.

PERFORATED INTERVALS :

1250.00 - 1260.00 M R.T.	(1171.00 - 1181.00 M SSL)	P	G	T	C
1448.00 - 1474.00 M R.T.	(1369.00 - 1395.00 M SSL)	I	W	T	O
1485.00 - 1496.00 M R.T.	(1406.00 - 1417.00 M SSL)	I	W	T	O
1501.00 - 1510.00 M R.T.	(1422.00 - 1431.00 M SSL)	I	W	T	O

REMARKS : ADIBITO A SMALTIMENTO ACQUA

P = Production	I = Injection	
O = Oil	G = Gas	W = Water
S = Short	L = Long	T = Tbg
C = Shutin	O = Open	A = Squeezed



RIPALTA 7 (5/12/1950- 4/ 8/1960)

COORDINATES : NORTH 0.00
EAST 0.00

PLATFORM : *****

DRILLING PERIOD : 11/11/50-4/12/50

TOTAL DEPTH 1605.00 M R.T.

TOP OF CEMENT PLUG : 0.00 M R.T.

ROTARY TABLE 76.00 M above S.L.
FIRST FLANGE 0.00 M below G.L.
GROUND LEVEL 0.00 M above S.L.

CASING PROFILE : 18" 5/ 8 at 50.00 M R.T.
13" 3/ 8 at 356.70 M R.T.
9" 5/ 8 at 1152.80 M R.T.
6" 5/ 8 at 1650.25 M R.T.

TUBING SHOE(S) : 2" 7/ 8 at 1509.80 M R.T.

PERFORATED INTERVALS :

LEVEL

1513.00 - 1541.00 M R.T. (1437.00 - 1465.00 M SSL) P G T O

REMARKS :

P = Production I = injection
O = Oil G = Gas W = Water
S = **Short** L = Long T = Tbg
C = Shutin O = Open A = Squeezed



RIPALTA 7 (5/ 8/1960-)

COORDINATES : NORTH 0.00
EAST 0.00

PLATFORM : *****

DRILLING PERIOD : 11/11/50-4/12/50

TOTAL DEPTH 1605.00 M R.T.

TOP OF CEMENT PLUG : 0.00 M R.T.

ROTARY TABLE 76.00 M above S.L.

FIRST FLANGE 0.00 M below G.L.

GROUND LEVEL 0.00 M above S.L.

CASING PROFILE : 18" 5/ 8 at 50.00 M R.T.

13" 3/ 8 at 356.70 M R.T.

9" 5/ 8 at 1152.80 M R.T.

6" 5/ 8 at 1650.25 M R.T.

TUBING SHOE(S) : 3" 1/ 2 at 1468.42 M R.T.

PERFORATED INTERVALS :

1473.00 - 1502.50 M R.T. (1397.00 - 1426.50 M SSL) P G T O
1513.00 - 1541.00 M R.T. (1437.00 - 1465.00 M SSL) P G T O

REMARKS : ESTENSIONE SPARI - CAMBIO TUBING
STIMOLAZIONE CON ACIDO (4/1965)

P = Production I = Injection
O = Oil G = Gas W = Water
S = Short L = Long T = Tbg
C = Shutin O = Open A = Squeezed



RIPALTA 8 (14/ 1/1951-26/ 5/1991)

COORDINATES : NORTH 0.00
EAST 0.00

PLATFORM : *****

DRILLING PERIOD : 27/11/50-13/1/51

TOTAL DEPTH 1625.00 M R.T.

TOP OF CEMENT PLUG : 0.00 M R.T.

ROTARY TABLE 65.00 M above S.L.

FIRST FLANGE 0.00 M below G.L.

GROUND LEVEL 0.00 M above S.L.

CASING PROFILE : 18" 5/ 8 at 62.40 M R.T.
13" 3/ 8 at 354.40 M R.T.
9" 5/ 8 at 1152.50 M R.T.
6" 5/ 8 at 1624.25 M R.T.

TUBING SHOE(S) : 2" 7/ 8 at 1516.20 M R.T.

PERFORATED INTERVALS :

LEVEL

1519.00 - 1566.50 M R.T. (1454.00 - 1501.50 M SSL) P G T O

REMARKS : CHIUSO DAL 7-1962 PER PRODUZIONE DI ACQUA

P = Production I = Injection
O = Oil G = Gas W = Water
S = Short L = Long T = Tbg
C = Shutin O = Open A = Squeezed



RIPALTA 8 (27/ 5/1991-

COORDINATES : NORTH 0.00
EAST 0.00

PLATFORM - *****

DRILLING PERIOD : 27/11/50-13/1/51

TOTAL DEPTH 1625.00 M R.T.

TOP OF CEMENT PLUG : 0.00 M R.T.

ROTARY TABLE 65.00 M above S.L.
FIRST FLANGE 0.00 M below G.L.
GROUND LEVEL 0.00 M above S.L.

CASING PROFILE : 18" 5/ 8 at 62.40 M R.T.
13" 3/ 8 at 354.40 M R.T.
9" 5/ 8 at 1152.50 M R.T.
6" 5/ 8 at 1624.25 M R.T.

BRIDGE PLUG : 9" 5/ 8 at 40.00 M R.T.
9" 5/ 8 at 655.00 M R.T.

PERFORATED INTERVALS :
LEVEL

1519.00 - 1566.50 M R.T. (1454.00 - 1501.50 M SSL) P G T C

REMARKS : CHIUSURA MINERARIA

P = Production I = Injection
O = Oil G = Gas W = Water
S = Short L = Long T = Tbg
C = Shutin O = Open A = Squeezed



RIPALTA 9

(4/ 4/1951-19/ 9/1987)

COORDINATES : NORTH 0.00
EAST 0.00

PLATFORM : *****

DRILLING PERIOD : 29/12/50-3/4/51

TOTAL DEPTH 1650.00 M R.T.

TOP OF CEMENT PLUG : 0.00 M R.T.

ROTARY TABLE 68.50 M above S.L.

FIRST FLANGE 0.00 M below G.L.

GROUND LEVEL 0.00 M above S.L.

CASING PROFILE : 18" 5/ 8 at 50.80 M R.T.
13" 3/ 8 at 347.00 M R.T.
9" 5/ 8 at 1199.00 M R.T.
6" 5/ 8 at 1623.50 M R.T.

TUBING SHOE(S) : 2" 7/ 8 at 1503.50 M R.T.

PERFORATED INTERVALS :

LEVEL

1511.00 - 1557.50 M R.T. (1442.50 - 1489.00 M SSL) P G T O
1566.50 - 1570.00 M R.T. (1498.00 - 1501.50 M SSL) P G T O

REMARKS :

P = Production I = Injection
O = Oil G = Gas W = Water
S = Short L = Long T = Tbg
C = Shutin O = Open A = Squeezed



h

RIPALTA 9 (20/ 9/1987-)

COORDINATES : NORTH 0.00
EAST 0.00

PLATFORM : *****

DRILLING PERIOD : 29/12/50-3/4/51

TOTAL DEPTH 1650.00 M R.T.

TOP OF CEMENT PLUG : 0.00 M R.T.

ROTARY TABLE 68.50 M above S.L.
FIRST FLANGE 0.00 M below G.L.
GROUND LEVEL 0.00 M above S.L.

CASING PROFILE : 18" 5/ 8 at 50.80 M R.T.
13" 3/ 8 at 347.00 M R.T.
9" 5 / 8 at 1199.00 M R.T.
6" 5 / 8 at 1623.50 M R.T.

BRIDGE PLUG : 6" 5 / 8 at 1537.50 M R.T.

PACKER(S) : 6" 5/ 8 at 1473.40 M R.T.

TUBING SHOE(S) : 3" 1/ 2 at 1489.30 M R.T.

PERFORATED INTERVALS :

1511.00 - 1536.50 M R.T. (1442.50 - 1468.00 M SSL) P G T O
1538.50 - 1557.50 M R.T. (1470.00 - 1489.00 M SSL) P G T C
1566.00 - 1570.00 M R.T. (1497.50 - 1501.50 M SSL) P G T C

REMARKS : PARZIALIZZAZIONE SPARI - CAMBIO TUBING

P = Production I = Injection
O = Oil G = Gas W = Water
S = Short L = Long T = Tbg
C = Shutin O = Open A = Squeezed



h

h

RIPALTA 10

(22/ 3/1951-10/ 8/1960)

COORDINATES : NORTH 0.00
EAST 0.00

PLATFORM : *****

DRILLING PERIOD : 29/1/51-21/3/51

TOTAL DEPTH 1615.00 M R.T.

TOP OF CEMENT PLUG : 0.00 M R.T.

ROTARY TABLE 64.00 M above S.L.
FIRST FLANGE 0.00 M below G.L.
GROUND LEVEL 0.00 M above S.L.

CASING PROFILE : 18" 5/ 8 at 57.00 M R.T.
13" 3/ 8 at 344.30 M R.T.
9" 5/ 8 at 1149.80 M R.T.
6" 5/ 8 at 1619.10 M R.T.

TUBING SHOE(S) : 2" 7/ 8 at 1494.50 M R.T.

PERFORATED INTERVALS :
LEVEL

1502.50 - 1532.00 M R.T. (1438.50 - 1468.00 M SSL) P G T O

REMARKS :

P = Production I = Injection
O = Oil G = Gas W = Water
S = Short L = Long T = Tbg
C = Shutin O = Open A = Squeezed



RIPALTA 10

(11/ 8/1960-

COORDINATES : NORTH 0.00
EAST 0.00

PLATFORM : *****

DRILLING PERIOD : 29/1/51-21/3/51

TOTAL DEPTH 1615.00 M R.T.

TOP OF CEMENT PLUG : 0.00 M R.T.

ROTARY TABLE 64.00 M above S.L.
FIRST FLANGE 0.00 M below G.L.
GROUND LEVEL 0.00 M above S.L.

CASING PROFILE : 18" 5/ 8 at 57.00 M R.T.
13" 3/ 8 at 344.30 M R.T.
9" 5/ 8 at 1149.80 M R.T.
6" 5/ 8 at 1619.10 M R.T.

PACKER(S) : 6" 5/ 8 at 1440.00 M R.T.

TUBING SHOE(S) : 3" 1/ 2 at 1439.00 M R.T.

PERFORATED INTERVALS :

LEVEL

1451.00 - 1464.50 M R.T. (1387.00 - 1400.50 M SSL) P G T O
1473.50 - 1490.00 M R.T. (1409.50 - 1426.00 M SSL) P G T O
1502.50 - 1532.00 M R.T. (1438.50 - 1468.00 M SSL) P G T O

REMARKS : ESTENSIONE SPARI - CAMBIO TUBING
STIMOLAZIONE CON ACIDO (6/1963)

P = Production I = Injection
O = Oil G = Gas W = Water
S = Short L = Long T = Tbg
C = Shutin O = Open A = Squeezed



RIPALTA 11 (9/ 4/1951-28/ 5/1956)



COORDINATES : NORTH 0.00
EAST 0.00

PLATFORM : *****

DRILLING PERIOD : 13/2/51-8/4/51

TOTAL DEPTH 1620.00 M R.T.

TOP OF CEMENT PLUG : 0.00 M R.T.

ROTARY TABLE 77.00 M above S.L.

FIRST FLANGE 0.00 M below G.L.

GROUND LEVEL 0.00 M above S.L.

CASING PROFILE : 18" 5/ 8 at 35.00 M R.T.
13" 3/ 8 at 350.78 M R.T.
9" 5/ 8 at 1197.70 M R.T.
6" 5/ 8 at 1619.15 M R.T.

TUBING SHOE(S) : 2" 7/ 8 at 1578.00 M R.T.

PERFORATED INTERVALS :

LEVEL

1588.00 - 1593.00 M R.T. (1511.00 - 1516.00 M SSL) P G T O

REMARKS :

P = Production I = Injection
O = Oil G = Gas W = Water
S = Short L = Long T = Tbg
C = Shutin O = Open A = Squeezed

RIPALTA 11 (29/ 5/1956- 5/ 7/1990)

COORDINATES : NORTH 0.00
EAST 0.00

PLATFORM : *****

DRILLING PERIOD : 13/2/51-8/4/51

TOTAL DEPTH 1620.00 M R.T.

TOP OF CEMENT PLUG : 0.00 M R.T.

ROTARY TABLE 77.00 M above S.L.

FIRST FLANGE 0.00 M below G.L.

GROUND LEVEL 0.00 M above S.L.

CASING PROFILE : 18" 5/ 8 at 35.00 M R.T.
13" 3/ 8 at 350.78 M R.T.
9" 5/ 8 at 1197.70 M R.T.
6" 5/ 8 at 1619.15 M R.T.

TUBING SHOE(S) : 2" 7/ 8 at 1511.00 M R.T.

PERFORATED INTERVALS :

LEVEL

1526.00 - 1538.00 M R.T. (1449.00 - 1461.00 M SSL) P G T O
1551.00 - 1564.00 M R.T. (1474.00 - 1487.00 M SSL) P G T O
1588.00 - 1593.00 M R.T. (1511.00 - 1516.00 M SSL) P G T C

REMARKS : APERTURA INTERVALLO 1526 - 1564 MRT

P = Production I = injection
O = Oil G = Gas W = Water
S = Short L = Long T = Tbg
C = Shutin O = Open A = Squeezed



h

RIPALTA 11 (25/ 7/1990-)

COORDINATES : NORTH 0.00
EAST 0.00

PLATFORM : *****

DRILLING PERIOD : 13/2/51-8/4/51

TOTAL DEPTH 1620.00 M R.T.

TOP OF CEMENT PLUG : 0.00 M R.T.

ROTARY TABLE 77.00 M above S.L.
FIRST FLANGE 0.00 M below G.L.
GROUND LEVEL 0.00 M above S.L.

CASING PROFILE : 18" 5/ 8 at 35.00 M R.T.
13" 3/ 8 at 350.78 M R.T.
9" 5/ 8 at 1197.70 M R.T.
6" 5/ 8 at 1619.15 M R.T.

BRIDGE PLUG : 13" 3/ 8 at 190.00 M R.T.
6" 5/ 8 at 620.00 M R.T.

PERFORATED INTERVALS :

LEVEL

1526.00	-	1538.00	M	R.T.	(1449.00	-	1461.00	M	SSL)	P	G	T	C
1551.00	-	1564.00	M	R.T.	(1474.00	-	1487.00	M	SSL)	P	G	T	C
1588.00	-	1593.00	M	R.T.	(1511.00	-	1516.00	M	SSL)	P	G	T	C

REMARKS : CHIUSURA MINERARIA

P = Production	I = Injection	
O = Oil	G = Gas	W = Water
S = Short	L = Long	T = Tbg
C = Shutin	O = Open	A = Squeezed



RIPALTA 12 (17/ 4/1951-30/ 6/1958)

COORDINATES : NORTH 1555027.00
EAST 5018967.00

PLATFORM : *****

DRILLING PERIOD : 28/2/51-16/4/51

TOTAL DEPTH 1650.00 M R.T.

TOP OF CEMENT PLUG : 0.00 M R.T.

ROTARY TABLE 78.00 M above S.L.

FIRST FLANGE 0.00 M below G.L.

GROUND LEVEL 0.00 M above S.L.

CASING PROFILE : 18" 5/ 8 at 52.20 M R.T.
13" 3/ 8 at 293.25 M R.T.
9" 5/ 8 at 1185.00 M R.T.
6" 5/ 8 at 1646.30 M R.T.

TUBING SHOE(S) : 2" 7/ 8 at 1579.00 M R.T.

PERFORATED INTERVALS :
LEVEL

1585.50 - 1594.50 M R.T. (1507.50 - 1516.50 M SSL) P G T O A1

REMARKS :

P = Production I = Injection
O = Oil G = Gas W = Water
S = Short L = Long T = Tbg
C = Shutin O = Open A = Squeezed



RIPALTA 13 (7/ 7/1951- 4/ 4/1964)

COORDINATES : NORTH 0.00
EAST 0.00

PLATFORM : *****

DRILLING PERIOD : 8/5/51-6/7/51

TOTAL DEPTH 1640.00 M R.T.

TOP OF CEMENT PLUG : 0.00 M R.T.

ROTARY TABLE 79.00 M above S.L.

FIRST FLANGE 0.00 M below G.L.

GROUND LEVEL 0.00 M above S.L.

CASING PROFILE : 20" 1/ 2 at 41.80 M R.T.
13" 3/ 8 at 337.60 M R.T.
9" 5/ 8 at 1198.64 M R.T.
6" 5/ 8 at 1638.00 M R.T.

TUBING SHOE(S) : 2" 7/ 8 at 1565.37 M R.T.

PERFORATED INTERVALS :

1570.00 - 1588.00 M R.T. (1491.00 - 1509.00 M SSL) P G T O

REMARKS :

P = Production I = Injection
O = Oil G = Gas W = Water
S = Short L = Long T = Tbg
C = Shutin O = Open A = Squeezed



RIPALTA 13 (5/ 4/1964-29/ 4/1991)

COORDINATES : NORTH 0.00
EAST 0.00

PLATFORM : *****

DRILLING PERIOD : 8/5/51-6/7/51

TOTAL DEPTH 1640.00 M R.T.

TOP OF CEMENT PLUG : 0.00 M R.T.

ROTARY TABLE 79.00 M above S.L.
FIRST FLANGE 0.00 M below G.L.
GROUND LEVEL 0.00 M above S.L.

CASING PROFILE : 20" 1/ 2 at 41.80 M R.T.
13" 3/ 8 at 337.60 M R.T.
9" 5/ 8 at 1198.64 M R.T.
6" 5 / 8 at 1638.00 M R.T.

TUBING SHOE(S) : 2" 7 / 8 at 1370.00 M R.T.

PERFORATED INTERVALS :

1383.00 - 1388.00 M R.T. (1304.00 - 1309.00 M SSL) P G T O
1570.00 - 1588.00 M R.T. (1491.00 - 1509.00 M SSL) P G T C

REMARKS : CHIUSURA LIVELLO A - APERTURA LIVELLO C

P = Production I = Injection
O = Oil G = Gas W = Water
S = Short L = Long T = Tbg
C = Shutin O = Open A = Squeezed



RIPALTA 14

(21/ 5/1951- 5/ 8/1955)

COORDINATES : NORTH 0.00
EAST 0.00

PLATFORM : *****

DRILLING PERIOD : 29/4/51-20/5/51

TOTAL DEPTH 1630.00 M R.T.

TOP OF CEMENT PLUG : 0.00 M R.T.

ROTARY TABLE 63.00 M above S.L.
FIRST FLANGE 0.00 M below G.L.
GROUND LEVEL 0.00 M above S.L.

CASING PROFILE : 18" 5/ 8 at 55.70 M R.T.
13" 3/ 8 at 321.90 M R.T.
9" 5/ 8 at 1194.90 M R.T.
6" 5/ 8 at 1627.40 M R.T.

TUBING SHOE(S) : 2" 7/ 8 at 1526.50 M R.T.

PERFORATED INTERVALS :

LEVEL

1538.00 - 1589.00 M R.T. (1475.00 - 1526.00 M SSL) P G T O

REMARKS :

P = Production I = Injection
O = Oil G = Gas W = Water
S = Short L = Long T = Tbg
C = Shutin O = Open A = Squeezed



RIPALTA 14 (6/ 8/1955-30/ 6/1961)

COORDINATES : NORTH 0.00
EAST 0.00

PLATFORM - *****

DRILLING PERIOD : 29/4/51-20/5/51

TOTAL DEPTH 1630.00 M R.T.

TOP OF CEMENT PLUG : 0.00 M R.T.

ROTARY TABLE 63.00 M above S.L.
FIRST FLANGE 0.00 M below G.L.
GROUND LEVEL 0.00 M above S.L.

CASING PROFILE : 18" 5/8 at 55.70 M R.T.
13" 3/8 at 321.90 M R.T.
9" 5/8 at 1194.90 M R.T.
6" 5/8 at 1627.40 M R.T.

TUBING SHOE(S) : 2" 7/8 at 1618.58 M R.T.

PERFORATED INTERVALS :

LEVEL

1538.00 - 1564.00 M R.T. (1475.00 - 1501.00 M SSL) P G T O
1568.00 - 1589.00 M R.T. (1505.00 - 1526.00 M SSL) P G T C

REMARKS : ESCLUSIONE DEGLI INTERVALLI ALLAGATI

P = Production I = Injection
O = Oil G = Gas W = Water
S = Short L = Long T = Tbg
C = Shutin O = Open A = Squeezed



RIPALTA 14 (1/ 7/1961-15/ 2/1984)

COORDINATES : NORTH 0.00
EAST 0.00

PLATFORM : *****

DRILLING PERIOD : 29/4/51-20/5/51

TOTAL DEPTH 1630.00 M R.T.

TOP OF CEMENT PLUG : 0.00 M R.T.

ROTARY TABLE 63.00 M above S.L.
FIRST FLANGE 0.00 M below G.L.
GROUND LEVEL 0.00 M above S.L.

CASING PROFILE : 18" 5/ 8 at 55.70 M R.T.
13" 3/ 8 at 321.90 M R.T.
9" 5/ 8 at 1194.90 M R.T.
6" 5/ 8 at 1627.40 M R.T.

BRIDGE PLUG : 13" 3/ 8 at 917.00 M R.T.

TUBING SHOE(S) : 2" 7/ 8 at 916.00 M R.T.

PERFORATED INTERVALS :

LEVEL

877.00	-	893.00	M	R.T.	(814.00	-	830.00	M	SSL)	I	W	T	O
897.00	-	915.00	M	R.T.	(834.00	-	852.00	M	SSL)	I	W	T	O
1538.00	-	1589.00	M	R.T.	(1475.00	-	1526.00	M	SSL)	P	G	T	C

REMARKS : ADIBITO AD ASSORBIMENTO ACQUA SALATA

P = Production I = Injection
O = Oil G = Gas W = Water
S = Short L = Long T = Tbg
C = Shutin O = Open A = Squeezed



h

RIPALTA 14

(16/ 2/1984-

COORDINATES : NORTH 0.00
EAST 0.00

PLATFORM : *****

DRILLING PERIOD : 29/4/51-20/5/51

TOTAL DEPTH 1630.00 M R.T.

TOP OF CEMENT PLUG : 0.00 M R.T.

ROTARY TABLE 63.00 M above S.L.
FIRST FLANGE 0.00 M below G.L.
GROUND LEVEL 0.00 M above S.L.

CASING PROFILE : 18" 5/ 8 at 55.70 M R.T.
13" 3/ 8 at 321.90 M R.T.
9" 5/ 8 at 1194.90 M R.T.
6" 5/ 8 at 1627.40 M R.T.

PERFORATED INTERVALS :

LEVEL

877.00 - 893.00 M R.T.	(814.00 - 830.00 M SSL)	I	W	T	C
897.00 - 915.00 M R.T.	(834.00 - 852.00 M SSL)	I	W	T	C
1538.00 - 1589.00 M R.T.	(1475.00 - 1526.00 M SSL)	P	G	T	C

REMARKS : CHIUSURA MINERARIA

P = Production	I = Injection	
O = Oil	G = Gas	W = Water
S = Short	L = Long	T = Tbg
C = Shutin	O = Open	A = Squeezed



RIPALTA 15

(24/ 5/1951-18/ 1/1962)

COORDINATES : NORTH 0.00
EAST 0.00

PLATFORM : *****

DRILLING PERIOD : 13/4/51-23/5/51

TOTAL DEPTH 1635.00 M R.T.

TOP OF CEMENT PLUG : 0.00 M R.T.

ROTARY TABLE 65.00 M above S.L.

FIRST FLANGE 0.00 M below G.L.

GROUND LEVEL 0.00 M above S.L.

CASING PROFILE : 18" 5/ 8 at 58.50 M R.T.
13" 3/ 8 at 335.10 M R.T.
9" 5/ 8 at 1204.60 M R.T.
6" 5/ 8 at 1634.80 M R.T.

TUBING SHOE(S) : 2" 7/ 8 at 1519.90 M R.T.

PERFORATED INTERVALS :

LEVEL

1520.50 - 1579.50 M R.T. (1455.50 - 1514.50 M SSL) P G T O

REMARKS :

P = Production I = Injection
O = Oil G = Gas W = Water
S = Short L = Long T = Tbg
C = Shutin O = Open A = Squeezed



RIPALTA 15

(19/ 1/1962-20/ 5/1964)

COORDINATES : NORTH * 0.00
EAST 0.00

PLATFORM : *****

DRILLING PERIOD : 13/4/51-23/5/51

TOTAL DEPTH 1635.00 M R.T.

TOP OF CEMENT PLUG : 0.00 M R.T.

ROTARY TABLE 65.00 M above S.L.
FIRST FLANGE 0.00 M below G.L.
GROUND LEVEL 0.00 M above S.L.

CASING PROFILE : 18" 5/ 8 at 58.50 M R.T.
13" 3/ 8 at 335.10 M R.T.
9" 5/ 8 at 1204.60 M R.T.
6" 5/ 8 at 1634.80 M R.T.

BRIDGE PLUG : 6" 5/ 8 at 1540.50 M R.T.
6" 5/ 8 at 1548.50 M R.T.
6" 5/ 8 at 1554.50 M R.T.

PACKER(S) : 6" 5/ 8 at 1510.50 M R.T.

TUBING SHOE(S) : 2" 7/ 8 at 1510.00 M R.T.

PERFORATED INTERVALS :

1520.50 - 1539.50 M R.T. (1455.50 - 1474.50 M SSL) P G T O
1541.00 - 1579.50 M R.T. (1476.00 - 1514.50 M SSL) P G T C



REMARKS : PARZIALIZZAZIONE SPARI

P = Production I = Injection
O = Oil G = Gas W = Water
S = Short L = Long T = Tbg
C = Shutin O = Open A = Squeezed

RIPALTA 15 (21/ 5/1964- 9/ 1/1984)

COORDINATES : NORTH 0.00
EAST 0.00

PLATFORM : *****

DRILLING PERIOD : 13/4/51-23/5/51

TOTAL DEPTH 1635.00 M R.T.

TOP OF CEMENT PLUG : 0.00 M R.T.

ROTARY TABLE 65.00 M above S.L.
FIRST FLANGE 0.00 M below G.L.
GROUND LEVEL 0.00 M above S.L.

CASING PROFILE : 18" 5/ 8 at 58.50 M R.T.
13" 3/ 8 at 335.10 M R.T.
9" 5/ 8 at 1204.60 M R.T.
6" 5/ 8 at 1634.80 M R.T.

BRIDGE PLUG : 6" 5/ 8 at 1540.50 M R.T.
6" 5/ 8 at 1548.50 M R.T.
6" 5/ 8 at 1554.50 M R.T.

PERFORATED INTERVALS :
LEVEL

1520.50 - 1579.50 M R.T. (1455.50 - 1514.50 M SSL) P G T C

REMARKS : POZZO CHIUSO IN OSSERVAZIONE

P = Production I = Injection
O = Oil G = Gas W = Water
S = Short L = Long T = Tbg
C = Shutin O = Open A = Squeezed



RIPALTA 15 (10/ 1/1984-

COORDINATES : NORTH 0.00
EAST 0.00

PLATFORM : *****

DRILLING PERIOD : 13/4/51-23/5/51

TOTAL DEPTH 1635.00 M R.T.

TOP OF CEMENT PLUG : 0.00 M R.T.

ROTARY TABLE 65.00 M above S.L.
FIRST FLANGE 0.00 M below G.L.
GROUND LEVEL 0.00 M above S.L.

CASING PROFILE : 18" 5/ 8 at 58.50 M R.T.
13" 3/ 8 at 335.10 M R.T.
9" 5/ 8 at 1204.60 M R.T.
6" 5/ 8 at 1634.80 M R.T.

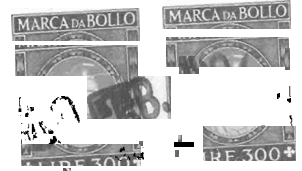
BRIDGE PLUG : 6" 5/ 8 at 1540.50 M R.T.
6" 5/ 8 at 1548.50 M R.T.
6" 5/ 8 at 1554.50 M R.T.

PERFORATED INTERVALS :
LEVEL

1520.50 - 1579.50 M R.T. (1455.50 - 1514.50 M SSL) P G T C

REMARKS : CHIUSURA MINERARIA

P = Production I = Injection
O = Oil G = Gas W = Water
S = Short L = Long T = Tbg
C = Shutin O = Open A = Squeezed



RIPALTA 17 (21/ 7/1951-30/ 6/1956)

COORDINATES : NORTH 1554550.00
EAST 5018809.00

PLATFORM : *****

DRILLING PERIOD : 2/6/1951-20/7/1951

TOTAL DEPTH 1655.00 M R.T.

TOP OF CEMENT PLUG : 0.00 M R.T.

ROTARY TABLE 78.00 M above S.L.
FIRST FLANGE 0.00 M below G.L.
GROUND LEVEL 0.00 M above S.L.

CASING PROFILE : 20" 1/ 2 at 16.00 M R.T.
13" 3/ 8 at 330.20 M R.T.
9" 5/ 8 at 1198.70 M R.T.
6" 5/ 8 at 1652.60 M R.T.

TUBING SHOE(S) : 2" 7/ 8 at 1553.00 M R.T.

PERFORATED INTERVALS :
LEVEL

1557.50 - 1592.00 M R.T. (1479.50 - 1514.00 M SSL) P G T O A1

REMARKS :

P = Production I = Injection
O = Oil G = Gas W = Water
S = Short L = Long T = Tbg
C = Shutin O = Open A = Squeezed



RIPALTA 17 (1/ 7/1956-20/ 4/1959)

COORDINATES : NORTH 1554550.00
EAST 5018809.00

PLATFORM : *****

DRILLING PERIOD : 2/6/1951-20/7/1951

TOTAL DEPTH : 1655.00 M R.T.

TOP OF CEMENT PLUG : 0.00 M R.T.

ROTARY TABLE 78.00 M above S.L.

FIRST FLANGE 0.00 M below G.L.

GROUND LEVEL 0.00 M above S.L.

CASING PROFILE : 20" 1/ 2 at 16.00 M R.T.
13" 3/ 8 at 330.20 M R.T.
9" 5/ 8 at 1198.70 M R.T.
6" 5/ 8 at 1652.60 M R.T.

TUBING SHOE(S) : 2" 7/ 8 at 1351.50 M R.T.

PERFORATED INTERVALS :
LEVEL

1361.00 - 1366.00 M R.T. (1283.00 - 1288.00 M SSL) P G T O
1557.50 - 1592.00 M R.T. (1479.50 - 1514.00 M SSL) P G T C Al

REMARKS : CHIUSURA LIVELLO A - APERTURA LIVELLO C

P = Production I = Injection
O = Oil G = Gas W = Water
S = Short L = Long T = Tbg
C = Shutin O = Open A = Squeezed



RIPALTA 17 (21/ 4/1959-)

COORDINATES : NORTH 1554550.00
EAST 5018809.00

PLATFORM : *****

DRILLING PERIOD : 2/6/1951-20/7/1951

TOTAL DEPTH 1655.00 M R.T.

TOP OF CEMENT PLUG : 0.00 M R.T.

ROTARY TABLE 78.00 M above S.L.

FIRST FLANGE 0.00 M below G.L.

GROUND LEVEL 0.00 M above S.L.

CASING PROFILE : 20" 1/ 2 at 16.00 M R.T.
13" 3/ 8 at 330.20 M R.T.
9" 5/ 8 at 1198.70 M R.T.
6" 5/ 8 at 1652.60 M R.T.

PERFORATED INTERVALS :
LEVEL

1361.00 - 1366.00 M R.T.	(1283.00 - 1288.00 M SSL)	P	G	T	C	
1557.50 - 1592.00 M R.T.	(1479.50 - 1514.00 M SSL)	P	G	T	C	Al

REMARKS : CHIUSURA MINERARIA

P = Production	I = Injection	
O = Oil	G = Gas	W = Water
S = Short	L = Long	T = Tbg
C = Shutin	O = Open	A = Squeezed



RIPALTA 18 (2/ 8/1951-22/ 8/1955)

COORDINATES : NORTH 0.00
EAST 0.00

PLATFORM : *****

DRILLING PERIOD : 15/6/51-1/8/51

TOTAL DEPTH 1680.00 M R.T.

TOP OF CEMENT PLUG : 0.00 M R.T.

ROTARY TABLE 78.00 M above S.L.
FIRST FLANGE 0.00 M below G.L.
GROUND LEVEL 0.00 M above S.L.

CASING PROFILE : 18" 5/ 8 at 46.40 M R.T.
13" 3/ 8 at 334.40 M R.T.
9" 5/ 8 at 1223.00 M R.T.
6" 5/ 8 at 1674.30 M R.T.

TUBING SHOE(S) : 2" 7/ 8 at 1567.00 M R.T.

PERFORATED INTERVALS :

LEVEL

1579.50 - 1584.00 M R.T. (1501.50 - 1506.00 M SSL) P G T O

REMARKS :

P = Production I = injection
O = Oil G = Gas W = Water
S = Short L = Long T = Tbg
C = Shutin O = Open A = Squeezed



RIPALTA 18 (23/ 8/1955- 8/ 1/1986)

COORDINATES : NORTH 0.00
EAST 0.00

PLATFORM : *****

DRILLING PERIOD : 15/6/51-1/8/51

TOTAL DEPTH 1680.00 M R.T.

TOP OF CEMENT PLUG : 0.00 M R.T.

ROTARY TABLE 78.00 M above S.L.
FIRST FLANGE 0.00 M below G.L.
GROUND LEVEL 0.00 M above S.L.

CASING PROFILE : 18" 5/ 8 at 46.40 M R.T.
13" 3/ 8 at 334.40 M R.T.
9" 5/ 8 at 1223.00 M R.T.
6" 5/ 8 at 1674.30 M R.T.

TUBING SHOE(S) : 2" 7/ 8 at 1540.00 M R.T.



PERFORATED INTERVALS :
LEVEL

1542.00	-	1546.00	M	R.T.	(1464.00	-	1468.00	M	SSL)	P	G	T	O
1553.00	-	1557.00	M	R.T.	(1475.00	-	1479.00	M	SSL)	P	G	T	O
1579.50	-	1584.00	M	R.T.	(1501.50	-	1506.00	M	SSL)	P	G	T	C

REMARKS : APERTURA SPARI 1542 - 1557 MRT

P = Production I = Injection
O = Oil G = Gas W = Water
S = Short L = Long T = Tbg
C = Shutin O = Open A = Squeezed

RIPALTA 18

(9/ 1/1986-

COORDINATES : NORTH 0.00
EAST 0.00

PLATFORM : *****

DRILLING PERIOD : 15/6/51-1/8/51

TOTAL DEPTH 1680.00 M R.T.

TOP OF CEMENT PLUG : 0.00 M R.T.

ROTARY TABLE 78.00 M above S.L..
FIRST FLANGE 0.00 M below G.L..
GROUND LEVEL 0.00 M above S.L..

CASING PROFILE : 18" 5/ 8 at 46.40 M R.T.
13" 3/ 8 at 334.40 M R.T.
9" 5/ 8 at 1223.00 M R.T.
6" 5/ 8 at 1674.30 M R.T.

TUBING SHOE(S) : 3" 1/ 2 at 1527.48 M R.T.

PERFORATED INTERVALS :

LEVEL

1542.00 - 1546.00 M R.T. (1464.00 - 1468.00 M SSL) P G T O
1553.00 - 1557.00 M R.T. (1475.00 - 1479.00 M SSL) P G T O
1579.50 - 1584.00 M R.T. (1501.50 - 1506.00 M SSL) P G T C

REMARKS : CAMBIO TUBING

P = Production I = injection
O = Oil G = Gas W = Water
S = Short L = Long T = Tbg
C = Shutin O = Open A = Squeezed



RIPALTA 20

(29/11/1951-

COORDINATES : NORTH 0.00
EAST 0.00

PLATFORM : *****

DRILLING PERIOD : 13/8/51-28/11/51

TOTAL DEPTH 1700.00 M R.T.

TOP OF CEMENT PLUG : 0.00 M R.T.

ROTARY TABLE 80.00 M above S.L.

FIRST FLANGE 0.00 M below G.L.

GROUND LEVEL 0.00 M above S.L.

CASING PROFILE : 18" 5/8 at 46.80 M R.T.
13" 3/8 at 345.90 M R.T.
9" 5/8 at 1223.85 M R.T.
6" 5/8 at 1616.70 M R.T.

TUBING SHOE(S) : 2" 7/8 at 1381.30 M R.T.

PERFORATED INTERVALS :

LEVEL

1383.50 - 1388.00 M R.T. (1303.50 - 1308.00 M SSL) P G T O
1389.00 - 1394.50 M R.T. (1309.00 - 1314.50 M SSL) P G T O
1396.00 - 1400.00 M R.T. (1316.00 - 1320.00 M SSL) P G T O

REMARKS :

P = Production I = Injection
O = Oil G = Gas W = Water
S = Short L = Long T = Tbg
C = Shutin O = Open A = Squeezed



RIPALTA 21

(14/11/1951-12/ 8/1956)

COORDINATES : NORTH 0.00
EAST 0.00

PLATFORM : *****

DRILLING PERIOD : 4/9/51-13/11/51

TOTAL DEPTH 1655.00 M R.T.

TOP OF CEMENT PLUG : 0.00 M R.T.

ROTARY TABLE 68.00 M above S.L.
FIRST FLANGE 0.00 M below G.L.
GROUND LEVEL 0.00 M above S.L.

CASING PROFILE : 18" 5/ 8 at 51.20 M R.T.
13" 3/ 8 at 332.60 M R.T.
9" 5/ 8 at 1223.40 M R.T.
6" 5/ 8 at 1642.00 M R.T.

TUBING SHOE(S) : 2" 7/ 8 at 1532.00 M R.T.

PERFORATED INTERVALS :

LEVEL

1540.00 - 1579.00 M R.T. (1472.00 - 1511.00 M SSL) P G T O

REMARKS :

P = Production I = Injection
O = Oil G = Gas W = Water
S = Short L = Long T = Tbg
C = Shutin O = Open A = Squeezed



RIPALTA 21 (13/ 8/1956- 6/ 6/1964)

COORDINATES : NORTH 0.00
EAST 0.00

PLATFORM : *****

DRILLING PERIOD : 4/9/51-13/11/51

TOTAL DEPTH 1655.00 M R.T.

TOP OF CEMENT PLUG : 0.00 M R.T.

ROTARY TABLE 68.00 M above S.L.

FIRST FLANGE 0.00 M below G.L.

GROUND LEVEL 0.00 M above S.L.

CASING PROFILE : 18" 5/ 8 at 51.20 M R.T.
13" 3/ 8 at 332.60 M R.T.
9" 5/ 8 at 1223.40 M R.T.
6" 5/ 8 at 1642.00 M R.T.

TUBING SHOE(S) : 2" 7/ 8 at 1532.00 M R.T.

PERFORATED INTERVALS :

LEVEL

1540.00 - 1560.50 M R.T. (1472.00 - 1492.50 M SSL) P G T O
1563.50 - 1579.00 M R.T. (1495.50 - 1511.00 M SSL) P G T C

REMARKS : ESCLUSIONE LIVELLI ALLAGATI - PARZIALIZZAZIONE SPARI

P = Production I = Injection
O = Oil G = Gas W = Water
S = Short L = Long T = Tbg
C = Shutin O = Open A = Squeezed



RIPALTA 21 (7/ 6/1964-)

COORDINATES : NORTH 0.00
EAST 0.00

PLATFORM : *****

DRILLING PERIOD : 4/9/51-13/11/51

TOTAL DEPTH 1655.00 M R.T.

TOP OF CEMENT PLUG 0.00 M R.T.

ROTARY TABLE 68.00 M above S.L.
FIRST FLANGE 0.00 M below G.L.
GROUND LEVEL 0.00 M above S.L.

CASING PROFILE : 18" 5/8 at 51.20 M R.T.
13" 3/8 at 332.60 M R.T.
9" 5/8 at 1223.40 M R.T.
6" 5/8 at 1642.00 M R.T.

PERFORATED INTERVALS :
LEVEL

1540.00 - 1579.00 M R.T. (1472.00 - 1511.00 M SSL) P G T C

REMARKS : CHIUSURA MINERARIA

P = Production I = Injection
O = Oil G = Gas W = Water
S = Short L = Long T = Tbg
C = Shutin O = Open A = Squeezed



RIPALTA 22

(16/ 8/1956- 2/ 6/1991)

COORDINATES : NORTH 0.00
EAST 0.00

PLATFORM : *****

DRILLING PERIOD : 26/9/51-3/12/51

TOTAL DEPTH 1650.00 M R.T.

TOP OF CEMENT PLUG : 0.00 M R.T.

ROTARY TABLE 67.40 M above S.L.

FIRST FLANGE 0.00 M below G.L.

GROUND LEVEL 0.00 M above S.L.

CASING PROFILE : 18" 5/ 8 at 49.30 M R.T.
13" 3/ 8 at 348.00 M R.T.
9" 5/ 8 at 1243.30 M R.T.
6" 5/ 8 at 1648.30 M R.T.

PACKER(S) : 6" 5/ 8 at 1522.76 M R.T.

TUBING SHOE(S) : 2" 7/ 8 at 1540.00 M R.T.

PERFORATED INTERVALS :

LEVEL

1549.00 - 1566.00 M R.T. (1481.60 - 1498.60 M SSL) P G T O
1570.00 - 1583.50 M R.T. (1502.60 - 1516.10 M SSL) P G T C

REMARKS : PARZIALIZZAZIONE SPARI
RICOMPLETAMENTO COME POZZO SPIA (12/1985)

P = Production I = injection
O = Oil G = Gas W = Water
S = Short L = Long T = Tbg
C = Shutin O = Open A = Squeezed



RIPALTA 22 (3/ 6/1991-)

COORDINATES : NORTH 0.00
EAST 0.00

PLATFORM : *****

DRILLING PERIOD : 26/9/51-3/12/51

TOTAL DEPTH 1650.00 M R.T.

TOP OF CEMENT PLUG : 0.00 M R.T.

ROTARY TABLE 67.40 M above S.L.

FIRST FLANGE 0.00 M below G.L.

GROUND LEVEL 0.00 M above S.L.

CASING PROFILE : 18" 5/ 8 at 49.30 M R.T.
13" 3/ 8 at 348.00 M R.T.
9" 5/ 8 at 1243.30 M R.T.
6" 5/ 8 at 1648.30 M R.T.

BRIDGE PLUG : 9" 5/ 8 at 460.00 M R.T.

PERFORATED INTERVALS :

LEVEL

1549.00 - 1583.50 M R.T. (1481.60 -- 1516.10 M SSL) P G T C

REMARKS : CHIUSURA MINERARIA

P = Production I = Injection
O = Oil G = Gas W = Water
S = Short L = Long T = Tbg
C = Shutin O = Open A = Squeezed



RIPALTA 23

(3/12/1951-21/ 3/1965)

COORDINATES : NORTH 0.00
EAST 0.00

PLATFORM : *****

DRILLING PERIOD : 24/10/51-2/12/51

TOTAL DEPTH 1675.00 M R.T.

TOP OF CEMENT PLUG : 0.00 M R.T.

ROTARY TABLE 77.00 M above S.L.

FIRST FLANGE 0.00 M below G.L.

GROUND LEVEL 0.00 M above S.L.

CASING PROFILE : 18" 5/ 8 at 45.70 M R.T.
13" 3/ 8 at 346.90 M R.T.
9" 5/ 8 at 1213.25 M R.T.
6" 5/ 8 at 1674.50 M R.T.

TUBING SHOE(S) : 2" 7/ 8 at 1551.50 M R.T.

PERFORATED INTERVALS :

LEVEL

1556.00 - 1559.00 M R.T. (1479.00 - 1482.00 M SSL) P G T O
1560.00 - 1568.00 M R.T. (1483.00 - 1491.00 M SSL) P G T O

REMARKS :

P = Production I = Injection
O = Oil G = Gas W = Water
S = Short L = Long T = Tbg
C = Shutin O = Open A = Squeezed



RIPALTA 23

(22/ 3/1965-

COORDINATES : NORTH 0.00
EAST 0.00

PLATFORM : *****

DRILLING PERIOD : 24/10/51-2/12/51

TOTAL DEPTH 1675.00 M R.T.

TOP OF CEMENT PLUG : 0.00 M R.T.

ROTARY TABLE 77.00 M above S.L.
FIRST FLANGE 0.00 M **below G.L.**
GROUND LEVEL 0.00 M above S.L.

CASING PROFILE : 18" 5/ 8 at 45.70 M R.T.
13" 3/ 8 at 346.90 M R.T.
9" 5/ 8 at 1213.25 M R.T.
6" 5/ 8 at 1674.50 M R.T.

BRIDGE PLUG : 6" 5/ 8 at 1530.00 M R.T.

PACKER(S) : 6" 5/ 8 at 1410.00 M R.T.

TUBING SHOE(S) : 2" 7/ 8 at 1410.00 M R.T.

PERFORATED INTERVALS :
LEVEL

1419.00 - 1429.00 M R.T.	(1342.00 - 1352.00 M SSL)	P	G	T	O
1556.00 - 1559.00 M R.T.	(1479.00 - 1482.00 M SSL)	P	G	T	C
1560.00 - 1568.00 M R.T.	(1483.00 - 1491.00 M SSL)	P	G	T	C

REMARKS : CHIUSURA LIVELLO A - APERTURA LIVELLO C

P = Production	I = Injection		
O = Oil	G = Gas	W = Water	
S = Short	L = Long	T = Tbg	
C = Shutin	O = Open	A = Squeezed	



RIPALTA 24

(10/ 1/1952-29/ 2/1959)

COORDINATES : NORTH 0.00
EAST 0.00

PLATFORM : *****

DRILLING PERIOD : 1/12/51-9/1/52

TOTAL DEPTH 1640.00 M R.T.

TOP OF CEMENT PLUG : 0.00 M R.T.

ROTARY TABLE 77.00 M above S.L.
FIRST FLANGE 0.00 M below G.L.
GROUND LEVEL 0.00 M above S.L.

CASING PROFILE : 18" 5/ 8 at 46.60 M R.T.
13" 3/ 8 at 353.00 M R.T.
9" 5/ 8 at 1224.20 M R.T.
6" 5/ 8 at 1631.60 M R.T.

TUBING SHOE(S) : 2" 7/ 8 at 1570.00 M R.T.

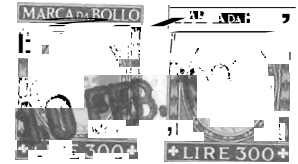
PERFORATED INTERVALS :

LEVEL

1573.00 - 1584.00 M R.T. (1496.00 - 1507.00 M SSL) P G T O

REMARKS :

P = Production I = Injection
O = Oil G = Gas W = Water
S = Short L = Long T = Tbg
C = Shutin O = Open A = Squeezed



RIPALTA 24 (1/ 3/1959-)

COORDINATES : NORTH 0.00
EAST 0.00

PLATFORM : *****

DRILLING PERIOD : 1/12/51-9/1/52

TOTAL DEPTH 1640.00 M R.T.

TOP OF CEMENT PLUG : 0.00 M R.T.

ROTARY TABLE 77.00 M above S.L.
FIRST FLANGE 0.00 M below G.L.
GROUND LEVEL 0.00 M above S.L.

CASING PROFILE : 18" 5/ 8 at 46.60 M R.T.
13" 3/ 8 at 353.00 M R.T.
9" 5/ 8 at 1224.20 M R.T.
6" 5/ 8 at 1631.60 M R.T.

BRIDGE PLUG : 6" 5/ 8 at 1555.00 M R.T.

PACKER(S) : 6" 5/ 8 at 1532.00 M R.T.

TUBING SHOE(S) : 2" 7/ 8 at 1532.00 M R.T.

PERFORATED INTERVALS :
LEVEL

1536.50 - 1549.00 M R.T. (1459.50 - 1472.00 M SSL) P G T O
1558.00 - 1568.00 M R.T. (1481.00 - 1491.00 M SSL) P G T C
1573.00 - 1584.00 M R.T. (1496.00 - 1507.00 M SSL) P G T C

REMARKS : APERTURA INTERVALLO 1536.5 - 1559 MRT

P = Production I = Injection
O = Oil G = Gas W = Water
S = Short L = Long T = Tbg
C = Shutin O = Open A = Squeezed



RIPALTA 25

(5/ 5/1952-31/ 8/1955)



COORDINATES : NORTH 0.00
EAST 0.00

PLATFORM : *****

DRILLING PERIOD : 24/11/51-14/1/52

TOTAL DEPTH 1675.00 M R.T.

TOP OF CEMENT PLUG : 0.00 M R.T.

ROTARY TABLE 76.50 M above S.L.
FIRST FLANGE 0.00 M below G.L.
GROUND LEVEL 0.00 M above S.L.

CASING PROFILE : 18" 5/ 8 at 47.90 M R.T.
13" 3/ 8 at 350.20 M R.T.
9" 5/ 8 at 1232.40 M R.T.
6" 5/ 8 at 1675.50 M R.T.

TUBING SHOE(S) : 2" 7/ 8 at 1563.50 M R.T.

PERFORATED INTERVALS :

LEVEL

1571.00 - 1579.00 M R.T. (1494.50 - 1502.50 M SSL) P G T O
1591.50 - 1593.50 M R.T. (1515.00 - 1517.00 M SSL) P G T O

REMARKS :

P = Production I = Injection
O = Oil G = Gas W = Water
S = Short L = Long T = Tbg
C = Shutin O = Open A = Squeezed

RIPALTA 25

(1/ 9/1955- 2/ 4/1958)

COORDINATES : NORTH 0.00
EAST 0.00

PLATFORM : *****

DRILLING PERIOD : 24/11/51-14/1/52

TOTAL DEPTH 1675.00 M R.T.

TOP OF CEMENT PLUG : 0.00 M R.T.

ROTARY TABLE 76.50 M above S.L.
FIRST FLANGE 0.00 M below G.L.
GROUND LEVEL 0.00 M above S.L.

CASING PROFILE : 18" 5/ 8 at 47.90 M R.T.
13" 3/ 8 at 350.20 M R.T.
9" 5/ 8 at 1232.40 M R.T.
6" 5/ 8 at 1675.50 M R.T.

TUBING SHOE(S) : 2" 7/ 8 at 1563.50 M R.T.

PERFORATED INTERVALS :

LEVEL

1571.00 - 1579.00 M R.T. (1494.50 - 1502.50 M SSL) P G T O
1591.50 - 1593.50 M R.T. (1515.00 - 1517.00 M SSL) P G T C

REMARKS : PARZIALIZZAZIONE SPARI

P = Production I = injection
O = Oil G = Gas W = Water
S = Short L = Long T = Tbg
C = Shutin O = Open A = Squeezed



RIPALTA 25 (3/ 4/1958-)

COORDINATES : NORTH 0.00
EAST 0.00

PLATFORM : *****

DRILLING PERIOD : 24/11/51-14/1/52

TOTAL DEPTH 1675.00 M R.T.

TOP OF CEMENT PLUG : 0.00 M R.T.

ROTARY TABLE 76.50 M above S.L.
FIRST FLANGE 0.00 M below G.L.
GROUND LEVEL 0.00 M above S.L.

CASING PROFILE : 18" 5/ 8 at 47.90 M R.T.
13" 3/ 8 at 350.20 M R.T.
9" 5/ 8 at 1232.40 M R.T.
6" 5/ 8 at 1675.50 M R.T.

PERFORATED INTERVALS :

LEVEL

1571.00 - 1579.00 M R.T. (1494.50 - 1502.50 M SSL) P G T C
1591.50 - 1593.50 M R.T. (1515.00 - 1517.00 M SSL) P G T C

REMARKS : CHIUSURA MINERARIA

P = Production I = Injection
O = Oil G = Gas W = Water
S = Short L = Long T = Tbg
C = Shutin O = Open A = Squeezed



RIPALTA 26

(1/ 2/1952-30/ 5/1964)

COORDINATES : NORTH 0.00
EAST 0.00



PLATFORM : *****

DRILLING PERIOD : 11/1/52-18/2/52

TOTAL DEPTH 1655.00 M R.T.

TOP OF CEMENT PLUG : 0.00 M R.T.

ROTARY TABLE 67.00 M above S.L.
FIRST FLANGE 0.00 M below G.L.
GROUND LEVEL 0.00 M above S.L.

CASING PROFILE : 18" 5/ 8 at 53.00 M R.T.
13" 3/ 8 at 315.00 M R.T.
9" 5/ 8 at 1195.00 M R.T.
6" 5/ 8 at 1646.50 M R.T.

TUBING SHOE(S) : 2" 7/ 8 at 1547.30 M R.T.

PERFORATED INTERVALS :

LEVEL

1558.00 - 1580.00 M R.T. (1491.00 - 1513.00 M SSL) P G T O

REMARKS :

P = Production I = Injection
O = Oil G = Gas W = Water
S = Short L = Long T = Tbg
C = Shutin O = Open A = Squeezed

RIPALTA 26

(31/ 5/1964-)

COORDINATES : NORTH 0.00
EAST 0.00

PLATFORM : *****

DRILLING PERIOD : 11/1/52-18/2/52

TOTAL DEPTH 1655.00 M R.T.

TOP OF CEMENT PLUG : 0.00 M R.T.

ROTARY TABLE 67.00 M above S.L.

FIRST FLANGE 0.00 M below G.L.

GROUND LEVEL 0.00 M above S.L.

CASING PROFILE : 18" 5/ 8 at 53.00 M R.T.
13" 3/ 8 at 315.00 M R.T.
9" 5/ 8 at 1195.00 M R.T.
6" 5/ 8 at 1646.00 M R.T.



PERFORATED INTERVALS :

LEVEL

1558.00 - 1580.00 M R.T. (1491.00 - 1513.00 M SSL) P G T C

REMARKS : CHIUSURA MINERARIA

P = Production I = Injection
O = Oil G = Gas W = Water
S = Short L = Long T = Tbg
C = Shutin O = Open A = Squeezed

RIPALTA 27 (28/10/1985-

COORDINATES : NORTH 0.00
EAST 0.00

PLATFORM : *****

DRILLING PERIOD : 13/4/52-15/7/52

TOTAL DEPTH 2515.00 M R.T.

TOP OF CEMENT PLUG : 0.00 M R.T.

ROTARY TABLE 79.00 M above S.L.

FIRST FLANGE 0.00 M below G.L.

GROUND LEVEL 0.00 M above S.L.

CASING PROFILE : 18" 5/ 8 at 49.10 M R.T.

13" 3/ 8 at 999.30 M R.T.

7" 0/ 0 at 1603.50 M R.T.

9" 5/ 8 at 1649.90 M R.T.

PACKER(S) : 7" 0/ 0 at 1446.68 M R.T.

TUBING SHOE(S) : 3" 1/ 2 at 1425.90 M R.T.

PERFORATED INTERVALS :

LEVEL

1484.50 - 1518.00 M R.T. (1405.50 - 1439.00 M SSL) P G T O

REMARKS : CAMBIO TUBING

P = Production

O = Oil

S = Short

C = Shutin

I = Injection

G = Gas

L = Long

O = Open

W = Water

T = Tbg

A = Squeezed



RIPALTA 28 (24/11/1952-15/ 7/1961)

COORDINATES : NORTH 0.00
EAST 0.00

PLATFORM : *****

DRILLING PERIOD : 6/2/52-21/3/52

TOTAL DEPTH 1800.00 M R.T.

TOP OF CEMENT PLUG : 0.00 M R.T.

ROTARY TABLE 79.00 M above S.L.
FIRST FLANGE 0.00 M below G.L.
GROUND LEVEL 0.00 M above S.L.

CASING PROFILE : 18" 5/ 8 at 52.40 M R.T.
13" 3/ 8 at 349.40 M R.T.
9" 5/ 8 at 1273.90 M R.T.
6" 5/ 8 at 1490.10 M R.T.

TUBING SHOE(S) : 2" 7/ 8 at 1470.00 M R.T.

PERFORATED INTERVALS :

LEVEL

1472.00 - 1481.00 M R.T. (1393.00 - 1402.00 M SSL) P G T O

REMARKS : POZZO CHIUSO DAL 10-59 AL 7-61 PER ALLAGAMENTO

P = Production I = injection
O = Oil G = Gas W = Water
S = Short L = Long T = Tbg
C = Shutin O = Open A = Squeezed



RIPALTA 28

(16/ 7/1961-15/ 2/1984)

COORDINATES : NORTH 0.00
EAST 0.00

PLATFORM : *****

DRILLING PERIOD : 6/2/52-21/3/52

TOTAL DEPTH 1800.00 M R.T.

TOP OF CEMENT PLUG : 0.00 M R.T.

ROTARY TABLE 79.00 M above S.L.
FIRST FLANGE 0.00 M below G.L.
GROUND LEVEL 0.00 M above S.L.

CASING PROFILE : 18" 5/ 8 at 52.40 M R.T.
13" 3/ 8 at 349.40 M R.T.
9" 5/ 8 at 1273.90 M R.T.
6" 5/ 8 at 1490.10 M R.T.

BRIDGE PLUG : 6" 5/ 8 at 1054.00 M R.T.

TUBING SHOE(S) : 2" 7/ 8 at 955.00 M R.T.

PERFORATED INTERVALS :

LEVEL

960.00	-	995.00	M	R.T.	(881.00	-	916.00	M	SSL)	I	W	T	O
1082.00	-	1085.00	M	R.T.	(1003.00	-	1006.00	M	SSL)	P	G	T	C
1472.00	-	1481.00	M	R.T.	(1393.00	-	1402.00	M	SSL)	P	G	T	C

REMARKS : ADIBITO A SMALTIMENTO ACQUE
STIMOLAZIONE CON ACIDO 2/1971

P = Production	I = Injection	
O = Oil	G = Gas	W = Water
S = Short	L = Long	T = Tbg
C = Shutin	O = Open	A = Squeezed



RIPALTA 28

(16/ 2/1984-

COORDINATES : NORTH 0.00
EAST 0.00

PLATFORM : *****

DRILLING PERIOD : 6/2/52-21/3/52

TOTAL DEPTH 1800.00 M R.T.

TOP OF CEMENT PLUG : 0.00 M R.T.

ROTARY TABLE 79.00 M above S.L.
FIRST FLANGE 0.00 M below G.L.
GROUND LEVEL 0.00 M above S.L.

CASING PROFILE : 18" 5/ 8 at 52.40 M R.T.
13" 3/ 8 at 349.40 M R.T.
9" 5/ 8 at 1273.90 M R.T.
6" 5/ 8 at 1490.10 M R.T.

BRIDGE PLUG : 6" 5/ 8 at 1054.00 M R.T.

PERFORATED INTERVALS :

LEVEL

960.00 - 995.00 M R.T. (881.00 - 916.00 M SSL) I W T C
1082.00 - 1085.00 M R.T. (1003.00 - 1006.00 M SSL) P G T C
1472.00 - 1481.00 M R.T. (1393.00 - 1402.00 M SSL) P G T C

REMARKS : CHIUSURA MINERARIA

P = Production I = Injection
O = Oil G = Gas W = Water
S = Short L = Long T = Tbg
C = Shutin O = Open A = Squeezed



h RIPALTA 31 D (31/ 5/1967-28/ 8/1985)

COORDINATES : NORTH 1554920.00
EAST 5017804.00

PLATFORM : *****

DRILLING PERIOD : 5/5/67-25/5/67

TOTAL DEPTH 1620.00 M R.T.

TOP OF CEMENT PLUG : 0.00 M R.T.

ROTARY TABLE 76.40 M above S.L.
FIRST FLANGE 0.00 M below G.L.
GROUND LEVEL 0.00 M above S.L.

CASING PROFILE : 9" 5/ 8 at 354.00 M R.T.
7" 0/ 0 at 1442.00 M R.T.

LINER : 5" 0/ 0 from 1344.00 to 1620.00 M R.T.

PACKER(S) : 5" 0/ 0 at 1293.00 M R.T.

TUBING SHOE(S) : 2" 7 / 8 at 1462.92 M R.T.

PERFORATED INTERVALS :

1496.00 - 1501.00 M R.T.	(1402.42 - 1407.33 M SSL)	P	G	T	O
1505.00 - 1508.00 M R.T.	(1411.25 - 1414.20 M SSL)	P	G	T	O
1523.00 - 1528.00 M R.T.	(1428.92 - 1433.83 M SSL)	P	G	T	O
1531.50 - 1534.50 M R.T.	(1436.78 - 1439.72 M SSL)	P	G	T	O
1545.00 - 1555.00 M R.T.	(1450.52 - 1460.33 M SSL)	P	G	T	O

REMARKS : 1 TBG 3"1/2 FINO A 1332.23 M

P = Production	I = Injection	
O = Oil	G = Gas	W = Water
S = Short	L = Long	T = Tbg
C = Shutin	O = Open	A = Squeezed



h



RIPALTA 31 D (29/ 8/1985-)

COORDINATES : NORTH 1554920.00
EAST 5017804.00

PLATFORM : *****

DRILLING PERIOD : 5/5/67-25/5/67

TOTAL DEPTH 1620.00 M R.T.

TOP OF CEMENT PLUG : 0.00 M R.T.

ROTARY TABLE 76.40 M above S.L.
FIRST FLANGE 0.00 M below G.L.
GROUND LEVEL 0.00 M above S.L.

CASING PROFILE : 9" 5/ 8 at 354.00 M R.T.
7" 0/ 0 at 1442.00 M R.T.

LINER : 5" 0/ 0 from 1344.00 to 1430.00 M R.T.

PACKER(S) : 7" 0/ 0 at 1333.60 M R.T.

TUBING SHOE(S) : 2" 7/ 8 at 1376.82 M R.T.

PERFORATED INTERVALS :

LEVEL

1496.00	-	1501.00	M	R.T.	(1402.42	-	1407.33	M	SSL)	P	G	T	O
1505.00	-	1508.00	M	R.T.	(1411.25	-	1414.20	M	SSL)	P	G	T	O
1523.00	-	1528.00	M	R.T.	(1428.92	-	1433.83	M	SSL)	P	G	T	O
1531.50	-	1534.50	M	R.T.	(1436.78	-	1439.72	M	SSL)	P	G	T	O
1545.00	-	1555.00	M	R.T.	(1450.52	-	1460.33	M	SSL)	P	G	T	O

REMARKS : 1 TBG 3"1/2 FINO A 1336.21 M

P = Production	I = Injection	
O = Oil	G = Gas	W = Water
S = Short	L = Long	T = Tbg
C = Shutin	O = Open	A = Squeezed



RIPALTA 32 D (14/10/1974-10/11/1985)

COORDINATES : NORTH 1554779.00
EAST 5017899.00

PLATFORM : *****

DRILLING PERIOD : 4/4/67-24/4/67

TOTAL DEPTH 1615.00 M R.T.

TOP OF CEMENT PLUG : 0.00 M R.T.

ROTARY TABLE 76.40 M above S.L.
FIRST FLANGE 0.00 M below G.L.
GROUND LEVEL 0.00 M above S.L.

CASING PROFILE : 9" 5 / 8 at 357.00 M R.T.
7" 0 / 0 at 1442.00 M R.T.

LINER : 5" 0 / 0 from 1325.00 to 1615.00 M R.T.

BRIDGE PLUG : 5" 0 / 0 at 1566.00 M R.T.

PACKER(S) : 7" 0 / 0 at 1293.00 M R.T.

TUBING SHOE(S) : 2" 7 / 8 at 1463.92 M R.T.

PERFORATED INTERVALS :

1547.00 - 1557.00 M R.T. (1456.69 - 1466.57 M SSL) P G T O

REMARKS : 1 TBG 3"1/2 FINO A 1272.72 M

P = Production I = Injection
O = Oil G = Gas W = Water
S = Short L = Long T = Tbg
C = Shutin O = Open A = Squeezed



RIPALTA 32 D (11/11/1985-)

COORDINATES : NORTH 1554779.00
EAST 5017899.00

PLATFORM : *****

DRILLING PERIOD : 4/4/67-24/4/67

TOTAL DEPTH 1615.00 M R.T.

TOP OF CEMENT PLUG : 0.00 M R.T.

ROTARY TABLE 76.40 M above S.L.

FIRST FLANGE 0.00 M below G.L.

GROUND LEVEL 0.00 M above S.L.

CASING PROFILE : 9" 5/8 at 357.00 M R.T.
7" 0/0 at 1442.00 M R.T.

LINER : 5" 0/0 from 1325.00 to 1615.00 M R.T.

BRIDGE PLUG : 5" 0/0 at 1566.00 M R.T.

PACKER(S) : 7" 0/0 at 1306.80 M R.T.

TUBING SHOE(S) : 2" 7/8 at 1360.27 M R.T.

PERFORATED INTERVALS :

LEVEL

1547.00 - 1557.00 M R.T. (1456.69 - 1466.57 M SSL) P G T O

REMARKS : 1 TBG 3"1/2 FINO A 1306.54 M

P = Production I = Injection
O = Oil G = Gas W = Water
S = Short L = Long T = Tbg
C = Shutin O = Open A = Squeezed



RIPALTA 33 D

(30/ 6/1967-11/ 8/1985)

COORDINATES : NORTH 0.00
EAST 0.00

PLATFORM : *****

DRILLING PERIOD : 5/6/67-30/6/67

TOTAL DEPTH 1605.00 M R.T.

TOP OF CEMENT PLUG : 0.00 M R.T.

ROTARY TABLE 76.00 M above S.L.
FIRST FLANGE 0.00 M below G.L.
GROUND LEVEL 0.00 M above S.L.

CASING PROFILE : 9" 5/ 8 at 353.00 M R.T.
7" 0/ 0 at 1433.00 M R.T.

LINER : 5" 0/ 0 from 1328.00 to 1601.00 M R.T.

PACKER(S) : 5" 0/ 0 at 1472.00 M R.T.

TUBING SHOE(S) : 2" 7/ 8 at 1470.03 M R.T.

PERFORATED INTERVALS :

LEVEL

1488.00	-	1498.00	M	R.T.	(1412.00	-	1422.00	M	SSL)	P	G	T	O
1520.00	-	1523.00	M	R.T.	(1444.00	-	1447.00	M	SSL)	P	G	T	O
1525.00	-	1529.00	M	R.T.	(1449.00	-	1453.00	M	SSL)	P	G	T	O
1540.00	-	1550.00	M	R.T.	(1464.00	-	1474.00	M	SSL)	P	G	T	O

REMARKS : 1 TBG 3"1/2 FINO A 1303.34 M

P = Production	I = Injection	
O = Oil	G = Gas	W = Water
S = Short	L = Long	T = Tbg
C = Shutin	O = Open	A = Squeezed



RIPALTA 34 D (1/ 8/1979- 9/ 8/1987)

COORDINATES : NORTH 1555453.00
EAST 5017857.00

PLATFORM : *****

DRILLING PERIOD : 25/5/79-8/6/79

TOTAL DEPTH 1586.00 M R.T.

TOP OF CEMENT PLUG : 0.00 M R.T.

ROTARY TABLE 78.00 M above S.L.

FIRST FLANGE 0.00 M below G.L.

GROUND LEVEL 0.00 M above S.L.

CASING PROFILE : 13" 3/ 8 at 205.00 M R.T.
9" 5/ 8 at 1457.00 M R.T.
7" 0/ 0 at 1584.00 M R.T.

PACKER(S) : 7" 0/ 0 at 1466.00 M R.T.

TUBING SHOE(S) : 3" 1/ 2 at 1465.67 M R.T.

PERFORATED INTERVALS :

LEVEL

1504.00 - 1509.00 M	R.T.	(1400.14 - 1405.14 M	SSL)	P	G	T	O
1517.00 - 1521.00 M	R.T.	(1413.13 - 1417.13 M	SSL)	P	G	T	O
1544.00 - 1546.00 M	R.T.	(1440.12 - 1442.12 M	SSL)	P	G	T	O
1550.50 - 1553.50 M	R.T.	(1446.11 - 1449.11 M	SSL)	P	G	T	O
1557.00 - 1560.00 M	R.T.	(1453.11 - 1456.11 M	SSL)	P	G	T	O
1561.00 - 1567.00 M	R.T.	(1457.11 - 1463.10 M	SSL)	P	G	T	O

REMARKS :

h
P = Production I = Injection
O = Oil G = Gas W = Water
S = Short L = Long T = Tbg
C = Shutin O = Open A = Squeezed



RIPALTA 34 D (10/ 8/1987-)

COORDINATES : NORTH 1555453.00
EAST 5017857.00

PLATFORM : *****

DRILLING PERIOD : 25/5/79-8/6/79

TOTAL DEPTH 1586.00 M R.T.

TOP OF CEMENT PLUG : 0.00 M R.T.

ROTARY TABLE 78.00 M above S.L.
FIRST FLANGE 0.00 M below G.L.
GROUND LEVEL 0.00 M above S.L.

CASING PROFILE : 13" 3/ 8 at 205.00 M R.T.
9" 5/ 8 at 1457.00 M R.T.
7" 0/ 0 at 1584.00 M R.T.

PACKER(S) : 7" 0/ 0 at 1456.00 M R.T.

TUBING SHOE(S) : 3" 1/ 2 at 1481.10 M R.T.

PERFORATED INTERVALS :

1504.00 - 1509.00 M R.T.	(1400.14 - 1405.14 M SSL)	P	G	T	O
1517.00 - 1521.00 M R.T.	(1413.13 - 1417.13 M SSL)	P	G	T	O
1544.00 - 1546.00 M R.T.	(1440.12 - 1442.12 M SSL)	P	G	T	O
1550.50 - 1553.50 M R.T.	(1446.11 - 1449.11 M SSL)	P	G	T	O
1557.00 - 1560.00 M R.T.	(1453.11 - 1456.11 M SSL)	P	G	T	O
1561.00 - 1567.00 M R.T.	(1457.11 - 1463.10 M SSL)	P	G	T	O

REMARKS : 1 RICOMPLETAMENTO

P = Production	I = Injection	
O = Oil	G = Gas	W = Water
S = Short	L = Long	T = Tbg
C = Shutin	O = Open	A = Squeezed



RIPALTA 35 D (10/ 7/1981-22/ 9/1985)

COORDINATES : NORTH 1554987.00
EAST 5017814.00

PLATFORM : *****

DRILLING PERIOD : 12/6/81-30/6/81

TOTAL DEPTH 1567.00 M R.T.

TOP OF CEMENT PLUG : 0.00 M R.T.

ROTARY TABLE 78.00 M above S.L.
FIRST FLANGE 0.00 M below G.L.
GROUND LEVEL 0.00 M above S.L.

CASING PROFILE : 13" 3/ 8 at 205.00 M R.T.
9" 5/ 8 at 955.00 M R.T.
7" 0/ 0 at 1564.00 M R.T.

PACKER(S) : 7" 0/ 0 at 1476.82 M R.T.

TUBING SHOE(S) : 3" 1/ 2 at 1473.96 M R.T.

PERFORATED INTERVALS :

LEVEL

1493.50 - 1496.00 M R.T. (1405.92 - 1408.92 M SSL) P G T O
1523.00 - 1525.00 M R.T. (1435.90 - 1437.90 M SSL) P G T O
1539.00 - 1547.00 M R.T. (1451.89 - 1459.89 M SSL) P G . T O

REMARKS :

P = Production I = Injection
O = Oil G = Gas W = Water
S = Short L = Long T = Tbg
C = Shutin O = Open A = Squeezed



h

RIPALTA 35 D (23/ 9/1985-)

COORDINATES : NORTH 1554987.00
EAST 5017814.00

PLATFORM : *****

DRILLING PERIOD : 12/6/81-30/6/81

TOTAL DEPTH 1567.00 M R.T.

TOP OF CEMENT PLUG : 0.00 M R.T.

ROTARY TABLE 78.00 M above S.L.
FIRST FLANGE 0.00 M below G.L.
GROUND LEVEL 0.00 M above S.L.

CASING PROFILE : 13" 3/ 8 at 205.00 M R.T.
9" 5/ 8 at 955.00 M R.T.
7" 0/ 0 at 1564.00 M R.T.

PACKER(S) : 7" 0/ 0 at 1448.67 M R.T.

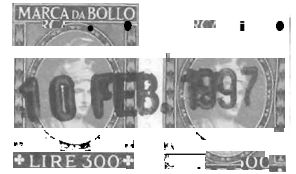
TUBING SHOE(S) : 3" 1/ 2 at 1475.21 M R.T.

PERFORATED INTERVALS :

1493.50	-	1496.00	M	R.T.	(1405.92	-	1408.92	M	SSL)	P	G	T	O
1523.00	-	1525.00	M	R.T.	(1435.90	-	1437.90	M	SSL)	P	G	T	O
1539.00	-	1547.00	M	R.T.	(1451.89	-	1459.89	M	SSL)	P	G	T	O

REMARKS : 1 RICOMPLETAMENTO

P = Production	I = Injection	
O = Oil	G = Gas	W = Water
S = Short	L = Long	T = Tbg
C = Shutin	O = Open	A = Squeezed



RIPALTA 36 D (9/ 6/1981-13/ 9/1985)

COORDINATES : NORTH 1554984.00
EAST 5017814.00

PLATFORM : *****

DRILLING PERIOD : 15/5/81-4/6/81

TOTAL DEPTH 1600.00 M R.T.

TOP OF CEMENT PLUG 0.00 M R.T.

ROTARY TABLE 78.00 M above S.L.
FIRST FLANGE 0.00 M below G.L.
GROUND LEVEL 0.00 M above S.L.

CASING PROFILE : 13" 3/ 8 at 199.00 M R.T.
9" 5/ 8 at 972.00 M R.T.
7" 0/ 0 at 1598.00 M R.T.

PACKER(S) : 7" 0/ 0 at 1504.92 M R.T.

TUBING SHOE(S) : 3" 1/ 2 at 1502.07 M R.T.

PERFORATED INTERVALS :

LEVEL

1523.00	-	1529.00	M	R.T.	(1411.71	-	1417.54	M	SSL)	P	G	T	O
1560.00	-	1562.00	M	R.T.	(1447.81	-	1449.78	M	SSL)	P	G	T	O
1576.00	-	1582.00	M	R.T.	(1463.57	-	1469.47	M	SSL)	P	G.	T	O

REMARKS :

P = Production	I = Injection	
O = Oil	G = Gas	W = Water
S = Short	L = Long	T = Tbg
C = Shutin	O = Open	A = Squeezed



h

n

RIPALTA 36 D (14/ 9/1985-)

COORDINATES : NORTH 1554984.00
EAST 5017814.00

PLATFORM . *****

DRILLING PERIOD : 15/5/81-4/6/81

TOTAL DEPTH 1600.00 M R.T.

TOP OF CEMENT PLUG : 0.00 M R.T.

ROTARY TABLE 78.00 M above S.L.
FIRST FLANGE 0.00 M below G.L.
GROUND LEVEL 0.00 M above S.L.

CASING PROFILE : 13" 3/ 8 at 199.00 M R.T.
9" 5/ 8 at 972.00 M R.T.
7" 0/ 0 at 1598.00 M R.T.

PACKER(S) : 7" 0/ 0 at 1487.60 M R.T.

TUBING SHOE(S) : 3" 1/ 2 at 1468.20 M R.T.

PERFORATED INTERVALS :

1523.00 - 1529.00 M R.T. (1411.71 - 1417.54 M SSL) P G T O
1560.00 - 1562.00 M R.T. (1447.81 - 1449.78 M SSL) P G T O
1576.00 - 1582.00 M R.T. (1463.57 - 1469.47 M SSL) P G T O

REMARKS : 1 RICOMPLETAMENTO

P = Production I = Injection
O = Oil G = Gas W = Water
S = Short L = Long T = Tbg
C = Shutin O = Open A = Squeezed



RIPALTA 37 D (11/ 5/1981-)

COORDINATES : NORTH 1554983.00
EAST 5017814.00

PLATFORM : *****

DRILLING PERIOD : 17/4/81-1/5/81

TOTAL DEPTH : 1620.00 M R.T.

TOP OF CEMENT PLUG 0.00 M R.T.

ROTARY TABLE 78.00 M above S.L.
FIRST FLANGE 0.00 M below G.L.
GROUND LEVEL 0.00 M above S.L.

CASING PROFILE : 13" 3/ 8 at 199.00 M R.T.
9" 5/ 8 at 982.00 M R.T.
7" 0/ 0 at 1619.00 M R.T.

PACKER(S) : 7" 0/ 0 at 1531.22 M R.T.

TUBING SHOE(S) : 3" 1/ 2 at 1529.35 M R.T.

PERFORATED INTERVALS :

1593.50 - 1596.00 M R.T. (1459.56 - 1462.54 M SSL) P G T O
1598.00 - 1602.00 M R.T. (1464.52 - 1468.49 M SSL) P G T O

REMARKS :

P = Production I = Injection
O = Oil G = Gas W = Water
S = Short L = Long T = Tbg
C = Shutin O = Open A = Squeezed



h

RIPALTA 38 D

(12/ 4/1981-31/ 8/1985)

COORDINATES : NORTH 1554979.00
EAST 5017813.00

PLATFORM . *****

DRILLING PERIOD : 18/3/81-5/4/81

TOTAL DEPTH 1630.00 M R.T.

TOP OF CEMENT PLUG : 0.00 M R.T.

ROTARY TABLE 78.00 M above S.L.

FIRST FLANGE 0.00 M below G.L.

GROUND LEVEL 0.00 M above S.L.

CASING PROFILE : 13" 3/ 8 at 200.00 M R.T.
9" 5/ 8 at 989.00 M R.T.
7" 0/ 0 at 1628.00 M R.T.

PACKER(S) : 7" 0/ 0 at 1579.26 M R.T.

TUBING SHOE(S) : 3" 1/ 2 at 1580.50 M R.T.

PERFORATED INTERVALS :

1599.00 - 1605.00 M R.T. (1460.32 - 1466.30 M SSL) P G T O

REMARKS :

P = Production I = Injection
O = Oil G = Gas W = Water
S = Short L = Long T = Tbg
C = Shutin O = Open A = Squeezed



RIPALTA 39 D (16/ 8/1987-

COORDINATES : NORTH 1555452.00
EAST 5017859.00

PLATFORM : *****

DRILLING PERIOD : 13/6/79-3/6/79

TOTAL DEPTH 1680.00 M R.T.

TOP OF CEMENT PLUG : 0.00 M R.T.

ROTARY TABLE 78.00 M above S.L.

FIRST FLANGE 0.00 M below G.L.

GROUND LEVEL 0.00 M above S.L.

CASING PROFILE : 13" 3/ 8 at 209.00 M R.T.
9" 5/ 8 at 1558.00 M R.T.
7" 0/ 0 at 1678.00 M R.T.

PACKER(S) : 7" 0/ 0 at 1555.00 M R.T.

TUBING SHOE(S) : 3" 1/ 2 at 1570.29 M R.T.

PERFORATED INTERVALS :

1648.00 - 1653.00 M R.T. (1464.83 - 1469.83 M SSL) P G T O
1656.00 - 1659.00 M R.T. (1472.82 - 1475.82 M SSL) P G T O

REMARKS : 1 RICOMPLETAMENTO

P = Production I = Injection
O = Oil G = Gas W = Water
S = Short L = Long T = Tbg
C = Shutin O = Open A = Squeezed



RIPALTA 40 D (30/ 7/1979- 2/ 8/1987)

COORDINATES : NORTH 1555453.00
EAST 5017854.00

PLATFORM : *****

DRILLING PERIOD : 30/4/79-13/5/79

TOTAL DEPTH 1666.00 M R.T.

TOP OF CEMENT PLUG : 0.00 M R.T.

ROTARY TABLE 78.00 M above S.L.
FIRST FLANGE 0.00 M below G.L.
GROUND LEVEL 0.00 M above S.L.

CASING PROFILE : 13" 3/ 8 at 199.00 M R.T.
9" 5/ 8 at 1573.00 M R.T.
7" 0/ 0 at 1663.00 M R.T.

PACKER(S) : 7" 0/ 0 at 1557.00 M R.T.

TUBING SHOE(S) : 3" 1/ 2 at 1556.00 M R.T.

PERFORATED INTERVALS :

LEVEL

1581.00 - 1583.00 M R.T.	(1399.60 - 1401.58 M SSL)	P	G	T	O
1593.00 - 1598.00 M R.T.	(1411.48 - 1416.43 M SSL)	P	G	T	O
1628.50 - 1630.50 M R.T.	(1446.13 - 1448.11 M SSL)	P	G	T	O
1634.00 - 1638.00 M R.T.	(1452.08 - 1456.04 M SSL)	P	G	T	O
1640.00 - 1645.00 M R.T.	(1458.03 - 1462.98 M SSL)	P	G	T	O

REMARKS :

P = Production I = Injection
O = Oil G = Gas W = Water
S = Short L = Long T = Tbg
C = Shutin O = Open A = Squeezed



h

RIPALTA 40 D (3/ 8/1987-)

COORDINATES : NORTH 1555453.00
EAST 5017854.00

PLATFORM : *****

DRILLING PERIOD : 30/4/79-13/5/79

TOTAL DEPTH 1666.00 M R.T.

TOP OF CEMENT PLUG : 0.00 M R.T.

ROTARY TABLE 78.00 M above S.L.

FIRST FLANGE 0.00 M below G.L.

GROUND LEVEL 0.00 M above S.L.

CASING PROFILE : 13" 3/ 8 at 199.00 M R.T.
9" 5 / 8 at 1573.00 M R.T.
7" 0/ 0 at 1663.00 M R.T.

PACKER(S) : 7" 0/ 0 at 1540.69 M R.T.

TUBING SHOE(S) : 3" 1/ 2 at 1556.49 M R.T.

PERFORATED INTERVALS :

1581.00	-	1583.00	M	R.T.	(1399.60	-	1401.58	M	SSL)	P	G	T	O
1593.00	-	1598.00	M	R.T.	(1411.48	-	1416.43	M	SSL)	P	G	T	O
1628.50	-	1630.50	M	R.T.	(1446.13	-	1448.11	M	SSL)	P	G	T	O
1634.00	-	1638.00	M	R.T.	(1452.08	-	1456.04	M	SSL)	P	G	T	O
1640.00	-	1645.00	M	R.T.	(1458.03	-	1462.98	M	SSL)	P	G	T	O

REMARKS : 1 RICOMPLETAMENTO

P = Production	I = Injection	
O = Oil	G = Gas	W = Water
S = Short	L = Long	T = Tbg
C = Shutin	O = Open	A = Squeezed



RIPALTA 41 D (28/ 7/1987-)

COORDINATES : NORTH 1555454.00
EAST 5017852.00

PLATFORM . *****

DRILLING PERIOD : 5/4/79-23/4/79

TOTAL DEPTH 1595.00 M R.T.

TOP OF CEMENT PLUG : 0.00 M R.T.

ROTARY TABLE 78.00 M above S.L.

FIRST FLANGE 0.00 M below G.L.

GROUND LEVEL 0.00 M above S.L.

CASING PROFILE : 13" 3/ 8 at 200.00 M R.T.
9" 5/ 8 at 1458.00 M R.T.
7" 0/ 0 at 1593.00.M R.T.

PACKER(S) : 7" 0/ 0 at 1470.00 M R.T.

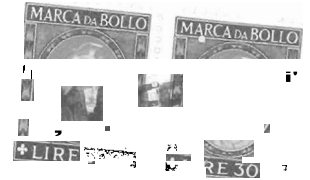
TUBING SHOE(S) : 3" 1/ 2 at 1487.00 M R.T.

PERFORATED INTERVALS :

1511.00	-	1518.00	M	R.T.	(1405.02	-	1411.97	M	SSL)	P	G	T	O
1553.00	-	1555.00	M	R.T.	(1446.76	-	1448.75	M	SSL)	P	G	T	O
1560.50	-	1563.50	M	R.T.	(1453.73	-	1456.72	M	SSL)	P	G	T	O
1566.00	-	1573.00	M	R.T.	(1459.70	-	1466.67	M	SSL)	P	G	T	O

REMARKS :

P = Production	I = Injection	
O = Oil	G = Gas	W = Water
S = Short	L = Long	T = Tbg
C = Shutin	O = Open	A = Squeezed



RIPALTA 43 D (6/ 4/1983-)

COORDINATES : NORTH 1555302.00
EAST 5017954.00

PLATFORM : *****

DRILLING PERIOD : 28/2/83-6/4/83

TOTAL DEPTH : 1571.00 M R.T.

TOP OF CEMENT PLUG 0.00 M R.T.

ROTARY TABLE 81.00 M above S.L.

FIRST FLANGE 0.00 M below G.L.

GROUND LEVEL 0.00 M above S.L.

CASING PROFILE : 13" 3/ 8 at 200.00 M R.T.
9" 5/ 8 at 1023.00 M R.T.
7" 0/ 0 at 1542.00 M R.T.

PACKER(S) : 7" 0/ 0 at 1469.30 M R.T.

TUBING SHOE(S) : 3" 1/ 2 at 1474.87 M R.T.

PERFORATED INTERVALS :

LEVEL

1542.00 - 1567.20 M R.T. (1444.37 - 1469.37 M SSL) P G T O

REMARKS : 1 COMPLETATO IN GRAVEL PACK (TOP 1521 M)
2 TBG 5" FINO A 1457.26 M

P = Production I = injection
O = Oil G = Gas W = Water
S = Short L = Long T = Tbg
C = Shutin O = Open A = Squeezed



RIPALTA 44 D (9/ 5/1983-)

COORDINATES : NORTH 1555301.00
EAST 5017956.00

PLATFORM : *****

DRILLING PERIOD : 8/4/83-9/5/83

TOTAL DEPTH 1596.00 M R.T.

TOP OF CEMENT PLUG : 0.00 M R.T.

ROTARY TABLE 81.00 M above S.L.
FIRST FLANGE 0.00 M below G.L.
GROUND LEVEL 0.00 M above S.L.

CASING PROFILE : 13" 3/ 8 at 200.00 M R.T.
9" 5/ 8 at 1040.00 M R.T.
7" 0/ 0 at 1566.00 M R.T.

PACKER(S) : 7" 0/ 0 at 1486.00 M R.T.

TUBING SHOE(S) : 3" 1/ 2 at 1491.42 M R.T.

PERFORATED INTERVALS :

LEVEL

1566.00 - 1595.50 M R.T. (1443.74 - 1472.70 M SSL) P G T O

REMARKS : 1 COMPLETATO IN GRAVEL PACK (TOP 1502 M)
2 TBG 5" FINO A 1474.03 M

P = Production I = injection
O = Oil G = Gas W = Water
S = Short L = Long T = Tbg
C = Shutin O = Open A = Squeezed



RIPALTA 45 D (6/ 6/1983-)

COORDINATES : NORTH 1555300.00
EAST 5017961.00

PLATFORM : *****

DRILLING PERIOD : 10/5/83-5/6/83

TOTAL DEPTH 1570.00 M R.T.

TOP OF CEMENT PLUG 0.00 M R.T.

ROTARY TABLE 81.00 M above S.L.

FIRST FLANGE 0.00 M below G.L.

GROUND LEVEL 0.00 M above S.L.

CASING PROFILE : 13" 3/ 8 at 199.00 M R.T.
9" 5/ 8 at 1022.00 M R.T.
7" 0/ 0 at 1546.00 M R.T.

PACKER(S) : 7" 0/ 0 at 1464.40 M R.T.

TUBING SHOE(S) : 3" 1/ 2 at 1469.84 M R.T.

PERFORATED INTERVALS :
LEVEL

1546.00 - 1569.50 M R.T. (1445.69 - 1468.69 M SSL) P G T O

REMARKS : 1 COMPLETATO IN GRAVEL PACK (TOP 1513 M)
2 TBG 5" FINO A 1452.49 M

P = Production I = Injection
O = Oil G = Gas W = Water
S = Short L = Long T = Tbg
C = Shutin O = Open A = Squeezed



RIPALTA 46 D (10/ 7/1983-

COORDINATES : NORTH 1555300.00
EAST 5017963.00

PLATFORM - *****

DRILLING PERIOD : 5/6/83-10/7/83

TOTAL DEPTH 1564.00 M R.T.

TOP OF CEMENT PLUG : 0.00 M R.T.

ROTARY TABLE 81.00 M above S.L.

FIRST FLANGE 0.00 M below G.L.

GROUND LEVEL 0.00 M above S.L.

CASING PROFILE : 13" 3/ 8 at 200.00 M R.T.
9" 5/ 8 at 1020.00 M R.T.
7" 0/ 0 at 1537.00 M R.T.

PACKER(S) : 7" 0/ 0 at 1427.37 M R.T.
7" 0/ 0 at 1502.95 M R.T.

TUBING SHOE(S) : 2" 7/ 8 at 1502.58 M R.T.

PERFORATED INTERVALS :

LEVEL

1490.50 - 1498.50 M R.T. (1398.36 - 1406.36 M SSL) P G T O
1537.00 - 1564.50 M R.T. (1445.35 - 1472.33 M SSL) P G T O

REMARKS : 1 COMPLETATO IN GRAVEL PACK (TOP O.H.1514 M, TOP I.C.1465 M)
2 TBG 5" FINO A 1415.81 M, TBG 3"1/2 FINO A 1430.91 M

P = Production I = Injection
O = Oil G = Gas W = Water
S = Short L = Long T = Tbg
C = Shutin O = Open A = Squeezed



RIPALTA 49

(1/ 8/1986-

COORDINATES : NORTH 1555273.00
EAST 5018023.00

PLATFORM : *****

DRILLING PERIOD : 7/4/86-23/4/86

TOTAL DEPTH 1649.00 M R.T.

TOP OF CEMENT PLUG 0.00 M R.T.

ROTARY TABLE 83.00 M above S.L.

FIRST FLANGE 0.00 M below G.L.

GROUND LEVEL 0.00 M above S.L.

CASING PROFILE : 13" 3/ 8 at 199.00 M R.T.
9" 5/ 8 at 1076.00 M R.T.
7" 0/ 0 at 1621.00 M R.T.

TUBING SHOE(S) : 5" 0/ 0 at 1515.00 M R.T.

PERFORATED INTERVALS :
LEVEL

1621.00 - 1648.00 M R.T. (1446.62 - 1473.58 M SSL) P G T O

REMARKS : 1 COMPLETATO IN GRAVEL PACK (TOP 1589 M)

P = Production I = injection
O = Oil G = Gas W = Water
S = Short L = Long T = Tbg
C = Shutin O = Open A = Squeezed



RIPALTA 50 (1/ 8/1986-)

COORDINATES : NORTH 1555273.00
EAST 5018023.00

PLATFORM : *****

DRILLING PERIOD : 27/4/86-11/5/86

TOTAL DEPTH 1599.00 M R.T.

TOP OF CEMENT PLUG : 0.00 M R.T.

ROTARY TABLE 83.00 M above S.L.
FIRST FLANGE 0.00 M below G.L.
GROUND LEVEL 0.00 M above S.L.



CASING PROFILE : 13" 3/ 8 at 195.00 M R.T.
9" 5/ 8 at 1037.00 M R.T.
7" 0/ 0 at 1570.00 M R.T.

TUBING SHOE(S) : 5" 0/ 0 at 751.27 M R.T.

PERFORATED INTERVALS :

LEVEL

1570.50 - 1595.00 M R.T. (1446.51 - 1471.50 M SSL) P G T O

REMARKS : 1 COMPLETATO IN GRAVEL PACK (TOP 1537 M)

P = Production I = injection
O = Oil G = Gas W = Water
S = Short L = Long T = Tbg
C = Shutin O = Open A = Squeezed

RIPALTA 51 (4/ 8/1986-

COORDINATES : NORTH 1555273.00
EAST 5018023.00

PLATFORM : *****

DRILLING PERIOD : 25/7/86-6/8/86

TOTAL DEPTH 1642.50 M R.T.

TOP OF CEMENT PLUG : 0.00 M R.T.

ROTARY TABLE 83.00 M above S.L.

FIRST FLANGE 0.00 M below G.L.

GROUND LEVEL 0.00 M above S.L.

CASING PROFILE : 13" 3/ 8 at 195.00 M R.T.
9" 5/ 8 at 1086.00 M R.T.
7" 0/ 0 at 1619.00 ~ R.T.

TUBING SHOE(S) : 2" 7/ 8 at 1541.80 M R.T.

PERFORATED INTERVALS :

LEVEL

1619.00 - 1642.50 M R.T. (1453.86 - 1477.33 M SSL) P G T O

REMARKS : 1 COMPLETATO IN GRAVEL PACK (TOP 1597.5 M)
2 TBG 5" FINO A 1515.6 M, TBG 3"1/2 FINO A 1536.9 M

P = Production

O = Oil

S = Short

C = Shutin

I = Injection

G = Gas

L = Long

O = Open

W = Water

T = Tbg

A = Squeezed



RIPALTA 52 (1/ 8/1986-

COORDINATES : NORTH 1555273.00
EAST 5018023.00

PLATFORM : *****

DRILLING PERIOD : 25/5/86-6/6/86

TOTAL DEPTH 1574.00 M R.T.

TOP OF CEMENT PLUG : 0.00 M R.T.

ROTARY TABLE 83.00 M above S.L.

FIRST FLANGE 0.00 M below G.L.

GROUND LEVEL 0.00 M above S.L.

CASING PROFILE : 13" 3/ 8 at 198.50 M R.T.
9" 5/ 8 at 1026.50 M R.T.
7" 0/ 0 at 1546.00 M R.T.

TUBING SHOE(S) : 2" 7/ 8 at 1470.51 M R.T.

PERFORATED INTERVALS :
LEVEL

1546.00 - 1573.50 M R.T. (1448.06 - 1475.06 M SSL) P G T O

REMARKS : 1 COMPLETATO IN GRAVEL PACK (TOP 1523 M)
2 TBG 5" FINO A 1444.24 M, TBG 3"1/2 FINO A 1465.47 M

P = Production I = Injection
O = Oil G = Gas W = Water
S = Short L = Long T = Tbg
C = Shutin O = Open A = Squeezed



RIPALTA 53 (1/ 8/1986-)

COORDINATES : NORTH 1555273.00
EAST 5018023.00

PLATFORM : *****

DRILLING PERIOD : 7/6/86-20/6/86

TOTAL DEPTH 1575.50 M R.T.

TOP OF CEMENT PLUG : 0.00 M R.T.

ROTARY TABLE 83.00 M above S.L.
FIRST FLANGE 0.00 M below G.L.
GROUND LEVEL 0.00 M above S.L.

CASING PROFILE : 13" 3/ 8 at 195.00 M R.T.
9" 5/ 8 at 1022.00 M R.T.
7" 0/ 0 at 1557.00 M R.T.

TUBING SHOE(S) : 2" 7/ 8 at 1529.15 M R.T.
2" 7/ 8 at 1539.15 M R.T.

PERFORATED INTERVALS :
LEVEL

1509.00 - 1518.00 M R.T. (1409.19 - 1418.19 M SSL) P G T O
1523.00 - 1528.00 M R.T. (1423.19 - 1428.19 M SSL) P G T O
1548.00 - 1575.50 M R.T. (1448.19 - 1475.69 M SSL) P G T O

REMARKS : 1 COMPLETATO IN GRAVEL PACK (TOP 1464 M, 1536.5 M)
2 COMPLETAMENTO SELETTIVO: POOL A1 DA 1509 A 1528
POOL A2 DA 1548 A 1575.5
3 TBG 5" FINO A 1425.88 M, TBG 3"1/2 FINO A 1447.1/1534.3 M

P = Production I = Injection
O = Oil G = Gas W = Water
S = Short L = Long T = Tbg
C = Shutin O = Open A = Squeezed



RIPALTA 54 (1/ 9/1986-

COORDINATES : NORTH 1555273.00
EAST 5018023.00

PLATFORM : *****

DRILLING PERIOD : 20/6/86-3/7/86

TOTAL DEPTH 1572.00 M R.T.

TOP OF CEMENT PLUG : 0.00 M R.T.

ROTARY TABLE 83.00 M above S.L.

FIRST FLANGE 0.00 M below G.L.

GROUND LEVEL 0.00 M above S.L.

CASING PROFILE : 13" 3/ 8 at 202.00 M R.T.
9" 5/ 8 at 1021.00 M R.T.
7" 0/ 0 at 1551.00 M R.T.

TUBING SHOE(S) : 2" 7/ 8 at 1511.76 ~ R.T.
2" 7/ 8 at 1522.61 M R.T.

PERFORATED INTERVALS :

LEVEL

1503.00 - 1510.00 M R.T. (1409.07 - 1416.07 M SSL) P G T O
1544.00 - 1548.00 M R.T. (1450.07 - 1454.07 M SSL) P G T O

REMARKS : 1 COMPLETATO IN GRAVEL PACK (TOP 1520 M)
2 COMPLETAMENTO SELETTIVO: POOL A1 DA 1503 A 1510
POOL A2 DA 1544 A 1551
3 TBG 5" FINO A 1416.84 M, TBG 3"1/2 FINO A 1439.4/1517.8 M

P = Production I = Injection
O = Oil G = Gas W = Water
S = Short L = Long T = Tbg
C = Shutin O = Open A = Squeezed



RIPALTA 56 (1/ 8/1989-)

COORDINATES : NORTH 1555491.00
EAST 5017715.00

PLATFORM : *****

DRILLING PERIOD : 26/2/89-12/3/89

TOTAL DEPTH 1664.00 M R.T.

TOP OF CEMENT PLUG : 0.00 M R.T.

ROTARY TABLE 0.00 M above S.L.
FIRST FLANGE 0.00 M below G.L.
GROUND LEVEL 0.00 M above S.L.

CASING PROFILE : 13" 3/ 8 at 209.00 M R.T.
9" 5/ 8 at 1098.00 M R.T.
7" 0/ 0 at 1637.00 M R.T.

TUBING SHOE(S) : 2" 7/ 8 at 1563.39 M R.T.

PERFORATED INTERVALS :
LEVEL

1636.00 - 1664.00 M R.T. (1532.10 - 1559.56 M SSL) P G T O

REMARKS : 1 COMPLETATO IN GRAVEL PACK (TOP 1592.5 M)
2 TBG 5" FINO A 1545.6 M, TBG 3"1/2 FINO 1558.2 M

P = Production I = Injection
O = Oil G = Gas W = Water
S = Short L = Long T = Tbg
C = Shutin O = Open A = Squeezed



RIPALTA 57 (1/ 8/1989-

COORDINATES : NORTH 1555491.00
EAST 5017714.00

PLATFORM : *****

DRILLING PERIOD : 12/3/89-24/3/89

TOTAL DEPTH 1680.00 M R.T.

TOP OF CEMENT PLUG : 0.00 M R.T.

ROTARY TABLE 81.00 M above S.L.

FIRST FLANGE 0.00 M below G.L.

GROUND LEVEL 0.00 M above S.L.

CASING PROFILE : 13" 3/ 8 at 209.00 M R.T.

9" 5/ 8 at 1107.00 M R.T.

7" 0/ 0 at 1651.00 M R.T.

TUBING SHOE(S) : 2" 7/ 8 at 1585.04 M R.T.

PERFORATED INTERVALS :

LEVEL

1650.00 - 1680.00 M R.T. (1443.15 - 1473.07 M SSL) P G T O

REMARKS : 1 COMPLETATO IN GRAVEL PACK (TOP 1576 M)
2 TBG 5" FINO A 1567.07 M , 3"1/2 FINO A 1579.9 M

P = Production

I = Injection

O = Oil

G = Gas

W = Water

S = Short

L = Long

T = Tbg

C = Shutin

O = Open

A = Squeezed



RIPALTA 58 D (1/ 8/1989-)

COORDINATES : NORTH 1555491.00
EAST 5017715.00

PLATFORM : *****

DRILLING PERIOD : 25/3/89-7/4/89

TOTAL DEPTH 1614.00 M R.T.

TOP OF CEMENT PLUG : 0.00 M R.T.

ROTARY TABLE 81.00 M above S.L.

FIRST FLANGE 0.00 M below G.L.

GROUND LEVEL 0.00 M above S.L.

CASING PROFILE : 13" 3/ 8 at 203.00 M R.T.
9" 5/ 8 at 1111.00 M R.T.
7" 0/ 0 at 1587.50 M R.T.

TUBING SHOE(S) : 2" 7/ 8 at 1527.16 M R.T.

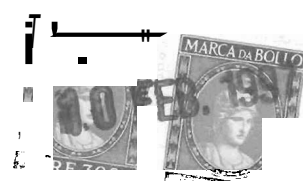
PERFORATED INTERVALS :

LEVEL

1587.50 - 1614.00 M R.T. (1444.96 - 1471.92 M SSL) P G T O

REMARKS : 1 COMPLETATO IN GRAVEL PACK (TOP 1551 M)
2 TBG 5" FINO A 1509.2 M, TBG 3"1/2 FINO A 1522 M

P = Production I = Injection
O = Oil G = Gas W = Water
S = Short L = Long T = Tbg
C = Shutin O = Open A = Squeezed



RIPALTA 59 (1/ 8/1989-

COORDINATES : NORTH 1555491.00
EAST 5017714.00

PLATFORM : *****

DRILLING PERIOD : 7/4/89-19/4/89

TOTAL DEPTH 1691.00 M R.T.

TOP OF CEMENT PLUG : 0.00 M R.T.

ROTARY TABLE 81.00 M above S.L.
FIRST FLANGE 0.00 M below G.L.
GROUND LEVEL 0.00 M above S.L.

CASING PROFILE : 13" 3/ 8 at 212.00 M R.T.
9" 5/ 8 at 1152.00 M R.T.
7" 0/ 0 at 1665.00 M R.T.

TUBING SHOE(S) : 2" 7/ 8 at 1696.00 M R.T.

PERFORATED INTERVALS :

LEVEL

1665.00 - 1690.00 M R.T. (1451.93 - 1476.86 M SSL) P G T O

REMARKS : 1 COMPLETATO IN GRAVEL PACK (TOP 1631 M)
2 TBG 5" FINO A 1582.96 M, TBG 3"1/2 FINO A 1595.8 M

P = Production I = Injection
O = Oil G = Gas W = Water
S = Short L = Long T = Tbg
C = Shutin O = Open A = Squeezed



RIPALTA 60 (1/ 8/1989-)

COORDINATES : NORTH 1555491.00
EAST 5017715.00

PLATFORM : *****

DRILLING PERIOD : 19/4/89-30/4/89

TOTAL DEPTH 1604.00 M R.T.

TOP OF CEMENT PLUG : 0.00 M R.T.

ROTARY TABLE 81.00 M above S.L.
FIRST FLANGE 0.00 M below G.L.
GROUND LEVEL 0.00 M above S.L.

CASING PROFILE : 13" 3/ 8 at 208.00 M R.T.
9" 5/ 8 at 1110.00 M R.T.
7" 0/ 0 at 1580.00 M R.T.

TUBING SHOE(S) : 2" 7/ 8 at 1557.74 M R.T.
2" 7/ 8 at 1567.60 M R.T.

PERFORATED INTERVALS :
LEVEL

1533.00 - 1540.00 M R.T. (1404.26 - 1411.24 M SSL) P G T O A1
1549.50 - 1552.50 M R.T. (1420.22 - 1423.21 M SSL) P G T O A1
1580.00 - 1604.00 M R.T. (1451.15 - 1475.09 M SSL) P G T O A2

REMARKS : 1 COMPLETATO IN GRAVEL PACK (TOP 1564.5/1505 M)
2 COMPLETAMENTO SELETTIVO: POOL A1 DA 1533 A 1552.5
POOL A2 DA 1580 A 1604
3 TBG 5" FINO A 1452.8 M, TBG 3"1/2 FINO A 1465.6/1562.44 M

P = Production I = Injection
O = Oil G = Gas W = Water
S = Short L = Long T = Tbg
C = Shutin O = Open A = Squeezed



CCIP

STUDIO GEOSISTEMI

ALL. N. 1

RIPALTA SEZIONE



SEZIONE GEOLOGICA TRA I POZZI

24 VERT 33 VERT 31 DIR 46 DIR 56 DIR
15 VERT

SCALA PROFONDITA' 1:2000

SCALA DISTANZE 1:5000

LEGENDA

CURVE ELETTRICHE : SP - LN / ILD - SN / SFL

Data : MARZO 1994

1350 PROFONDITA' LIVELLO MARE (MT)

24 Vert.

33 Vert.

31 Dir

46 Dir

56 Dir

15 Vert.

1400

1450

1500

1550

1600

1650

1700

1750

1800

1850

Fm.
**Sabbie di
CAVIAGA**

A1

A2

1450
1500
1550
1600

1450
1500
1550
1600

1450
1500
1550
1600

1450
1500
1550
1600

1450
1500
1550
1600

A1

A2

Fm.
**Sabbie di
CAVIAGA**

1350

1400

1450

1500

1550

1600

1650

1700

1750

1800

1850

RIPALTA
SEZIONE



SEZIONE GEOLOGICA TRA I POZZI

25 VERT	1 VERT	42 VERT	38 DIR	37 DIR
54 DIR	53 DIR	27 VERT	51 DIR	57 DIR
9 VERT	18 VERT			

SCALA PROFONDITA' 1:2000

SCALA DISTANZE 1:5000

LEGENDA

CURVE ELETTRICHE : SP - LN / ILD - SN / SFL

Data : MARZO 1994

