

LINE **CMG 76-01** S.P. 206 1/2 SP. 460  
 1200% D.B.S. - T.V.F. REFERENCE: 230976/14

**SORI** AREA: CAMIGNANO WESTERN RESEARCH GEOFISICHE s.p.a.  
 PROSPECT

**RECORDING DATA** **PLAYBACK DATA**

SHOT BY: WESTERN PARTY: F-81 MAGNETIC RECORDER: DDS 888 GAIN: I.E.P. SAMPLE RATE: 2 m/s RECORD LENGTH: 7000 m/s FILTER (H): 125 Hz ALIASING FILTER: 125 Hz SUBSURFACE COVERAGE: 1200% DATE: MAY 1978

SAMPLE RATE: 4 m/s RECORD LENGTH: 16 WEATHERING VEL: 600 m/s DATUM PLANE: SEA LEVEL Scale (VERTICAL): 1 sec = 95 cm (HORIZONTAL): 1 Km = 8.46 cm PREPROCESSOR REEL No: 89712 STACK REEL No: 75196 DATE: SEPTEMBER 1978

**FIELD DATA** **SKETCH**

SPREAD CONFIGURATION: 3550 - 600 m. SKETCH: 2950 m. 600 m.

ENERGY SOURCE: DYNAMITE CHARGE (S.P. AVG): 15 kg DEPTH (AVG): 30 m.

GEOPHONE PATTERN: GROUP INTERVAL: 50 m. GEOPHONES/GROUP: 24. GEOPHONE FREQUENCY: 10 Hz.

**PROCESSING**

TRANSCRIPTION: RESIDUAL STATICS, COMMON DEPTH POINT METHOD, COMMON OFFSET METHOD, COMMON SHOT METHOD, COMMON RECEIVER METHOD, MANUAL.

EDIT-DEMULTEPLEX ONLY OUTPUT, EDIT-GAINED OUTPUT, EDIT-GEOPHONE AMPLITUDE OUTPUT.

CORRELATION: STACK, WEIGHTED STACK, COHERENCY STACK.

PREPROCESSOR: STACK, WEIGHTED STACK, COHERENCY STACK.

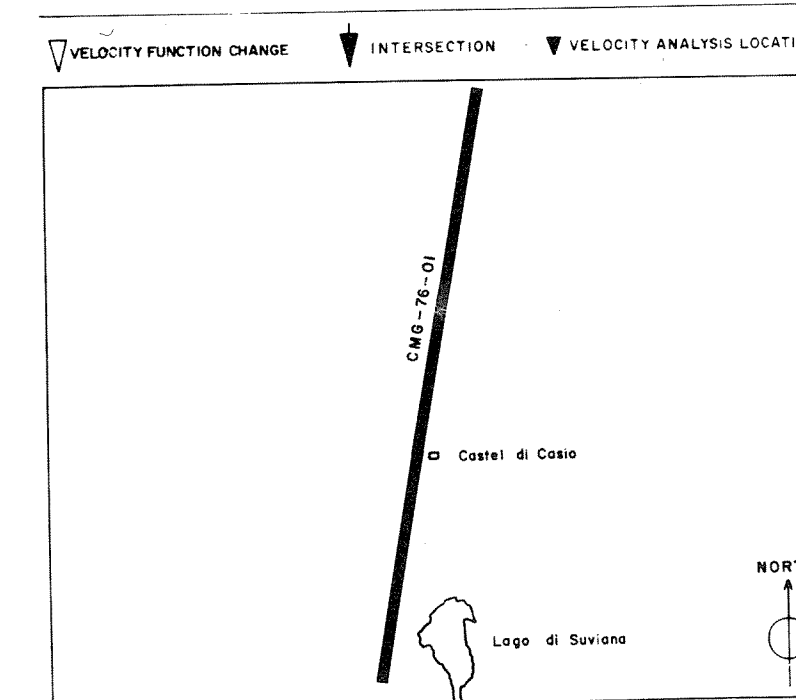
STATIC CORRECTIONS: BEFORE NMO, AFTER NMO. PREFILTER 9-OUT, R.M.S. GAIN BEFORE DECON, SPECIAL MUTE.

DYNAMIC CORRECTIONS: STRAIGHT RAY, CURVED RAY. FREQUENCY FILTER, MULTICHANNEL FILTER, RADIAL PREDICTIVE FILTER, CONTINUOUS VELOCITY ANALYSIS.

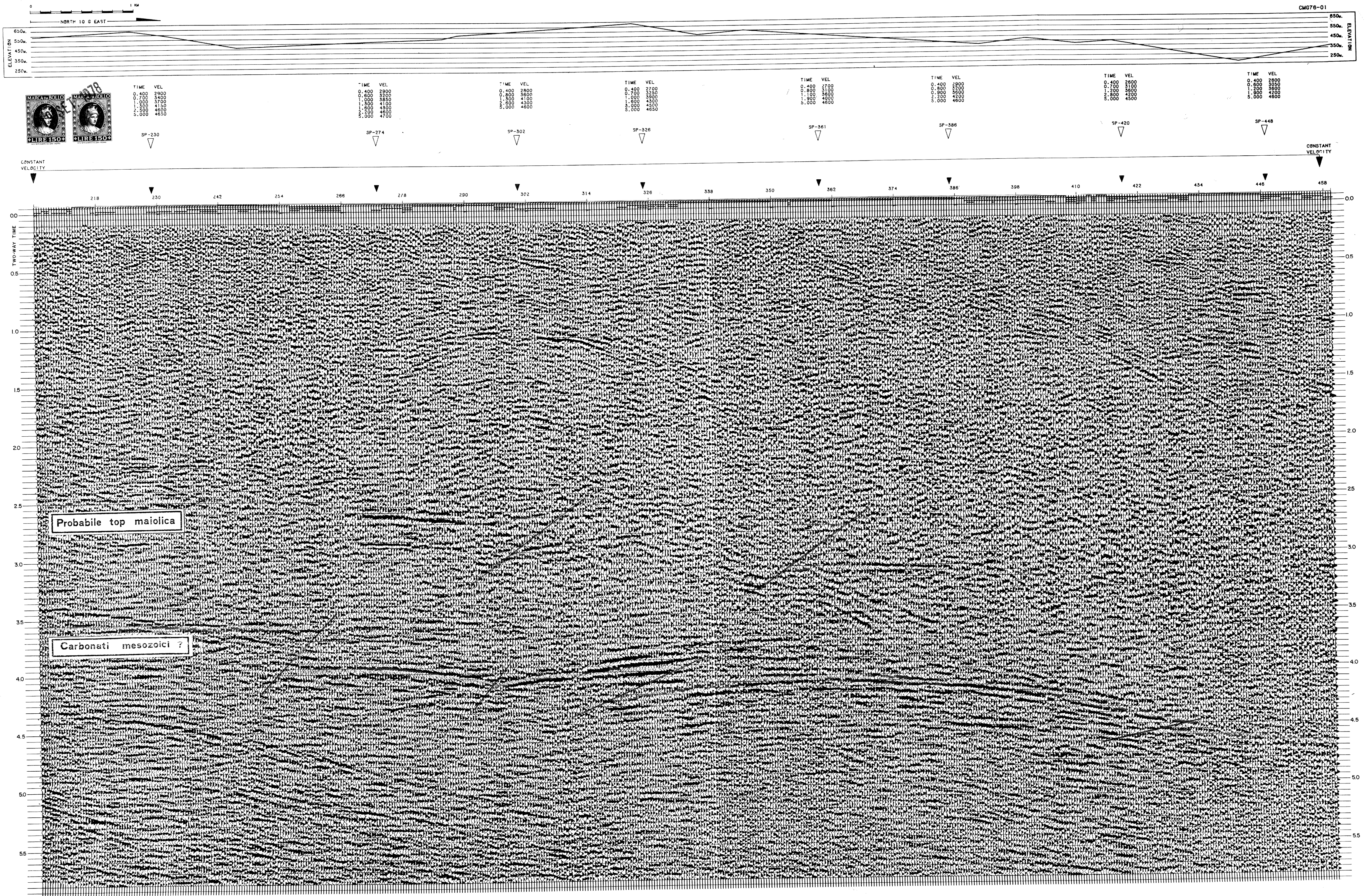
PRELIMINARY STACK: CONSTANT VELOCITY.

100% CORRECTED, 100% SELECTED TRACES, MINI SECTION.

VELOCITY ANALYSIS: PREDICTIVE TIME DOMAIN DECON, BEFORE STACK, AFTER STACK. PREDICTION DISTANCE: 20. OPERATOR LENGTH: 140. No WINDOWS: 2.



ANALYST: *[Signature]*



LINE CMG 76-01  
 SP. 206 1/2 SP. 460  
 1200% D.B.S. - T.V.F.

CMG76-01  
 ELEVATION  
 650m  
 550m  
 450m  
 350m  
 250m