

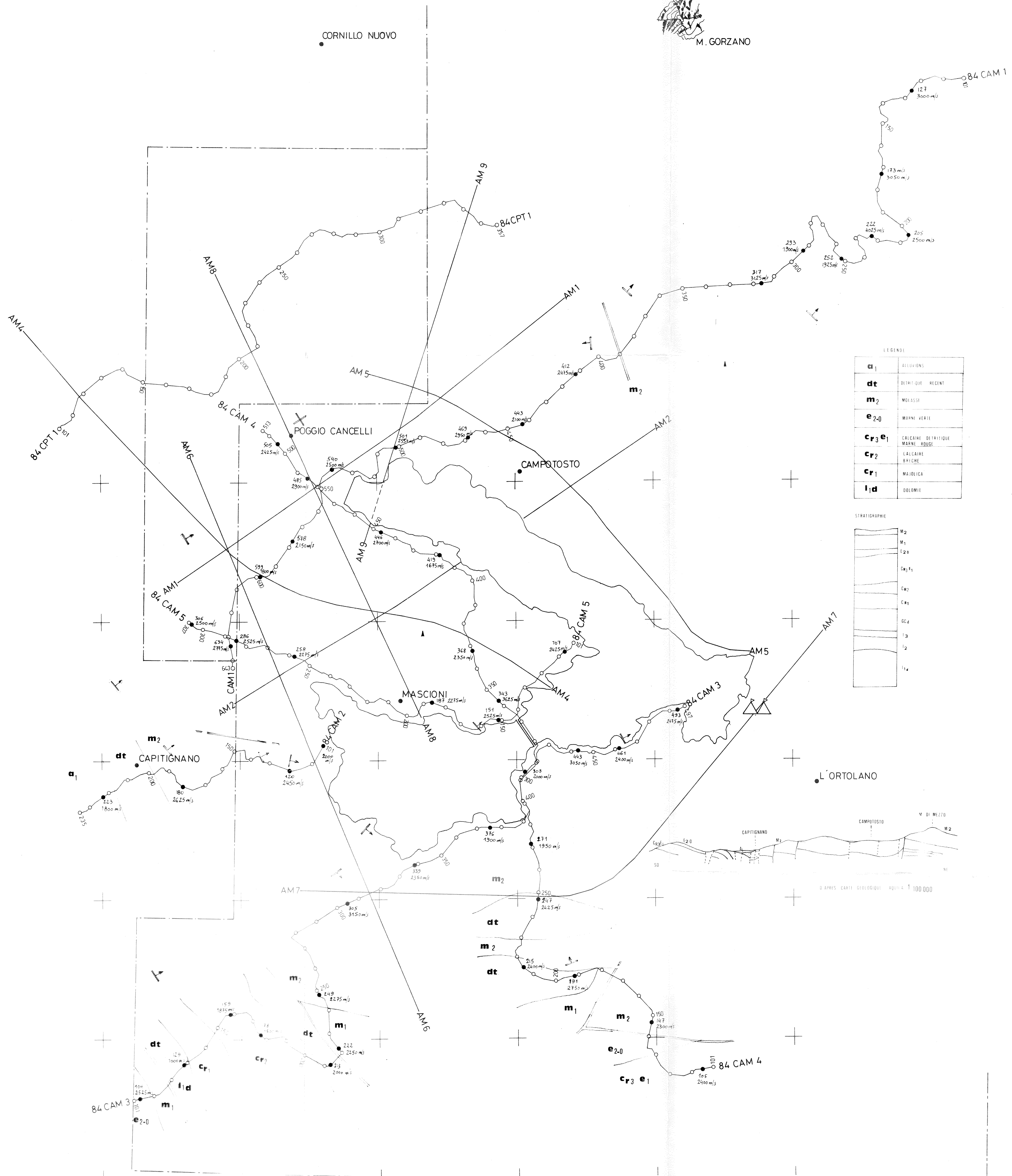
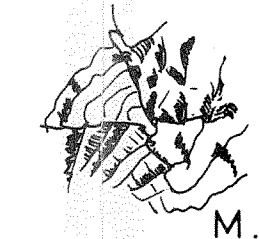
SEZIONE IDROGRAFICA  
di ROMA  
15 GEN. 1985  
Prof. N. 5718

REPARTITION DES  
BASES WZ

PL: 12

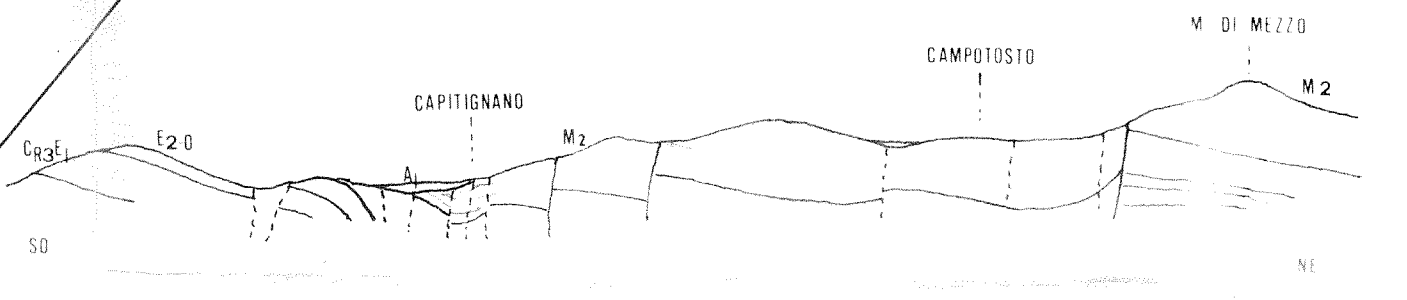
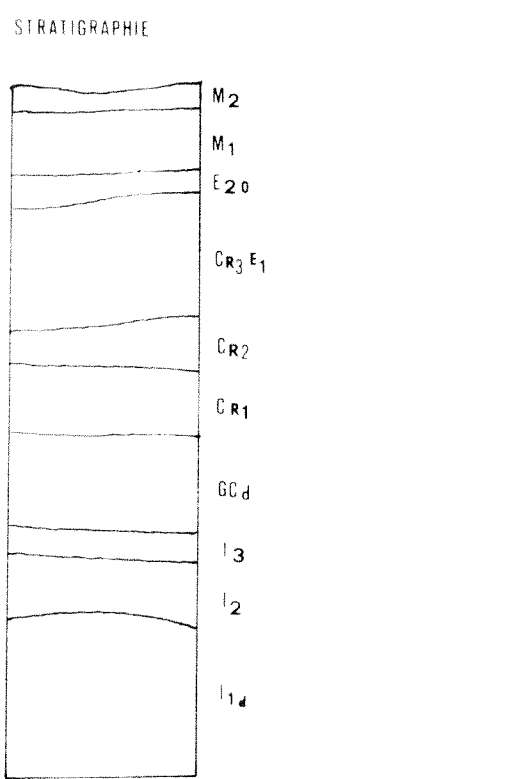
ECHELLE : 1 / 25000

124 BASE WZ



LEGENDE

a <sub>1</sub>	ALLUVIONS
dt	DELTAIQUE RECENT
m <sub>2</sub>	MOLASSE
e-2-0	MARNE VERIE
cr <sub>3</sub> e <sub>1</sub>	CALCAINE DELTATIQUE MARNE ROUGE
cr <sub>2</sub>	LALCAIRE BRICHE
cr <sub>1</sub>	MAJOLICA
l <sub>1</sub> d	DOLOMIE



D'APRES CARTES GEOLOGIQUES A L'ECHELLE 1/100 000