

A 886

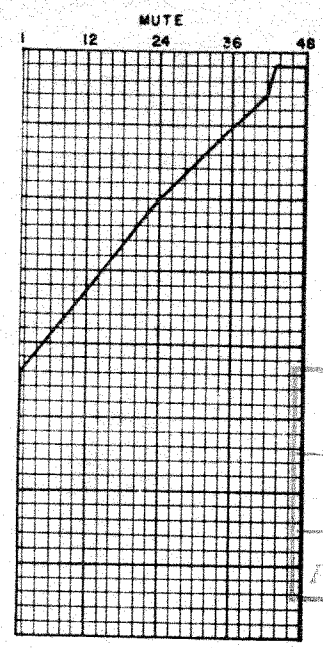
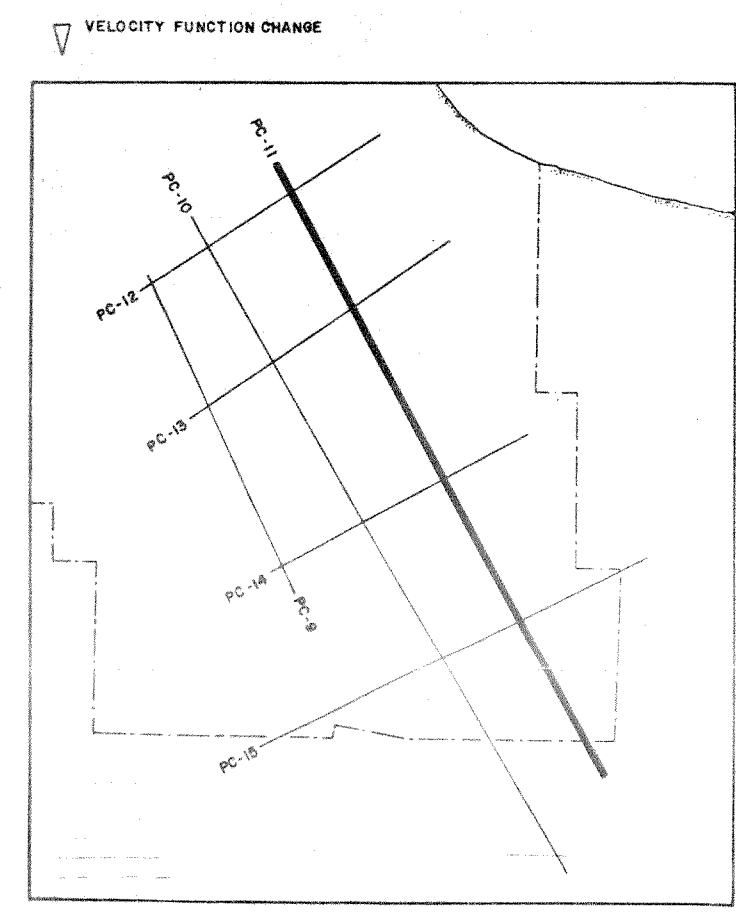
LINE **PC-II** S.P. 396 S.P. 100
 1200% DBS TVF

C.P.I. Permit: PORTOCANNONE **WESTERN**
 COMPAGNIA PETROLIFERA ITALIANA S.p.A. Area: MOLISE RICERCH
 GEOFISICHE S.p.A.

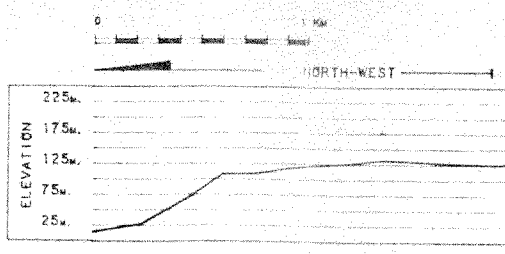
RECORDING DATA		PLAYBACK DATA	
SHOT BY	O.G.S.	SAMPLE RATE	4 ms
PARTY		N SAMPLE TRACE	1250
MAGNETIC RECORDER	DFS III	WEATHERING VEL	m / sec
GAIN	BINARY	SUBWEATHERING VEL	2000 m / sec
SAMPLE RATE	4 m s	DATUM PLANE	SEA LEVEL
RECORD LENGTH	6000 m s	Scale (VERTICAL Sec 10 cm	
FILTER (H)	62 cps	(HORIZONTAL Km 5.67 cm	
LOW	8 cps	PREPROCESSOR REEL No.	80770
ALIASING FILTER		STACK REEL No.	81551
SUBSURFACE COVERAGE	1200%	DATE	MARCH, 1978
DATE	AUGUST, 1975		

FIELD DATA		SKETCH	
SPREAD CONFIGURATION	262-3787 m.	SP	SP
GROUPS / INTERVAL	75 m.		
SEOPHONES / GROUP	24 No.		
SEOPHONES FREQUENCY	10c p.s.		
ENERGY SOURCE	EXPLOSIVE		
SHOT HOLES / S.P.			
AVERAGE CHARGE / SHOT	8 Kg		
AVERAGE SHOT / DEPTH	19 m.		
ENERGY SOURCE			

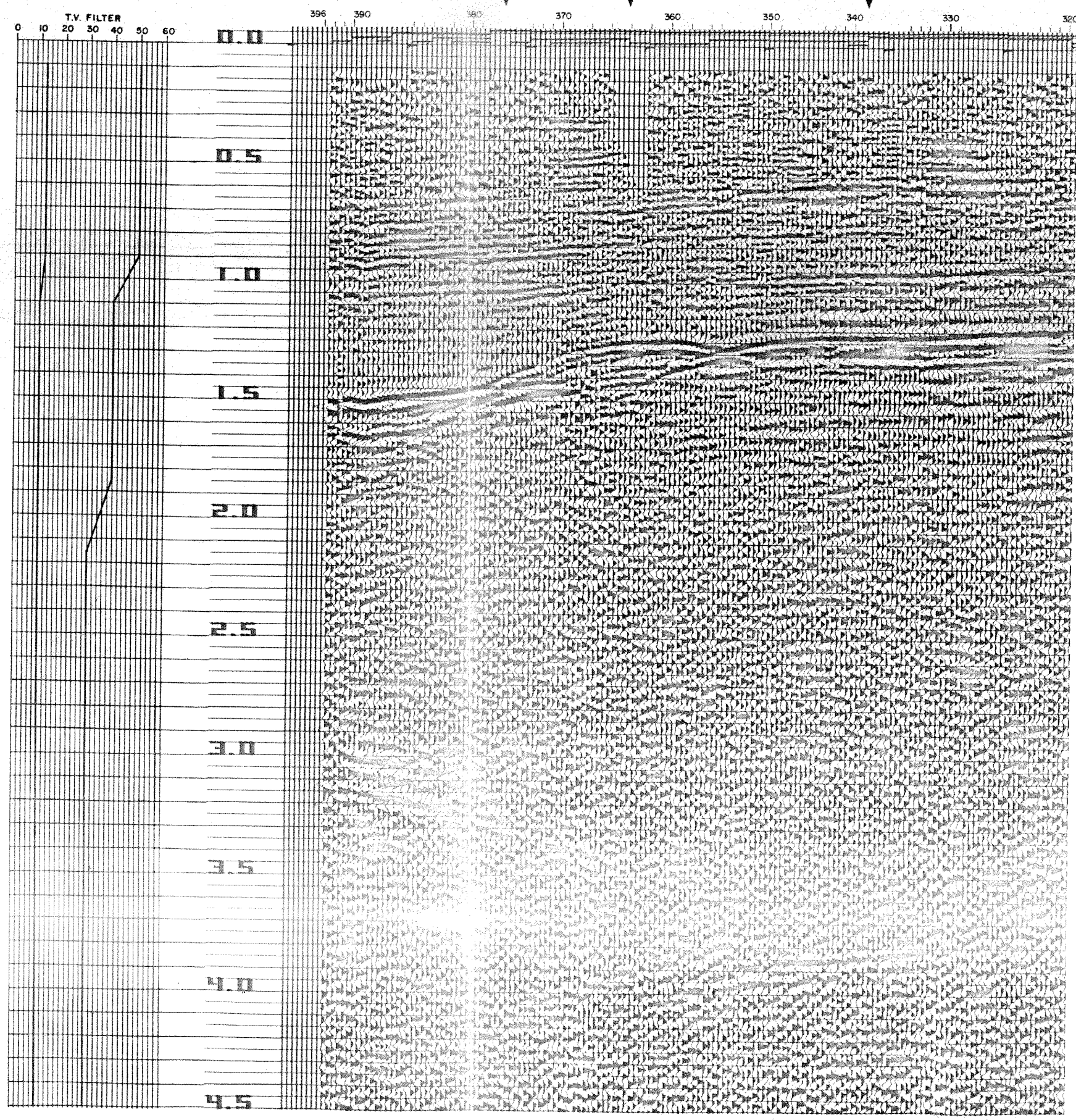
- PROCESSING SEQUENCE**
- EDIT
 - PREPROCESSOR
 - DECONVOLUTION BEFORE STK
 - PREDICTIVE DECON TIME DOMAIN
 - No. OF WINDOWS 4
 - MIN. PREDICTION DISTANCE 24 ms
 - OPERATOR LENGTH 136 -
 - STATIC CORRECTIONS - BEFORE NMO - CDP METHOD
 - VELOCITY ANALYSIS
 - DYNAMIC CORRECTIONS - STRAIGHT RAY
 - RESIDUAL STATIC CORRECTIONS
 - COHERENCY STK
 - TIME VARIANT FILTER (SEE GRAPH)
 - REFORMAT
- NOTE



22 500 063
 F-95734



TIME	VEL	TIME	VEL	TIME	VEL
0.100	2000	0.100	2000	0.100	2000
1.600	2500	0.800	2100	0.800	2100
2.000	3500	1.400	2450	1.200	2800
2.600	4300	1.600	2700	1.600	2900
4.000	4700	2.000	3400	2.000	3600
		2.600	4100	2.600	4200
		4.000	4700	3.200	4600
				4.000	4900



PC-12 SP.175
 PC-13 SP.150