

PC-2

S.P. 90 TO S.P. 190



600% DBS-TVF

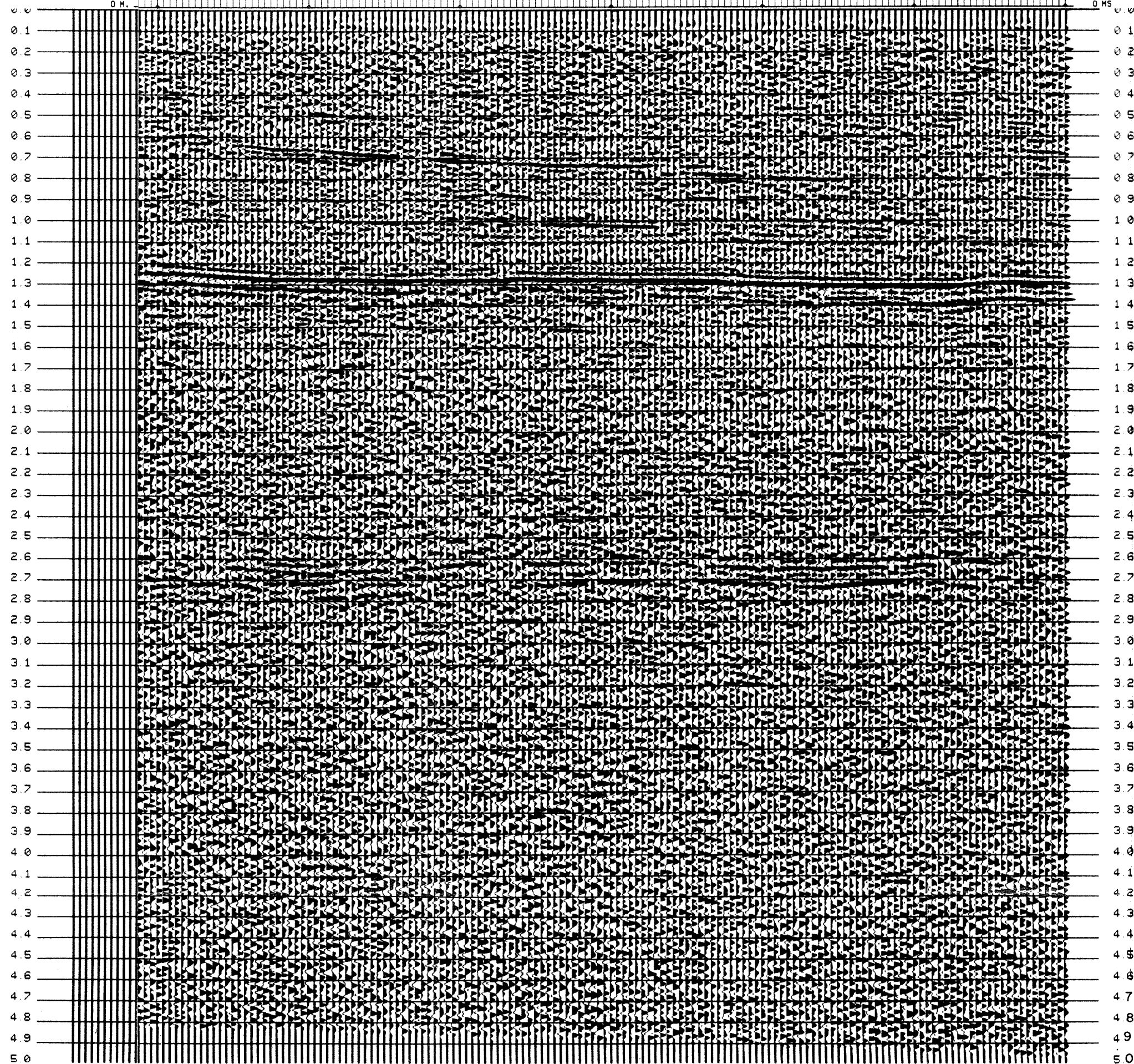
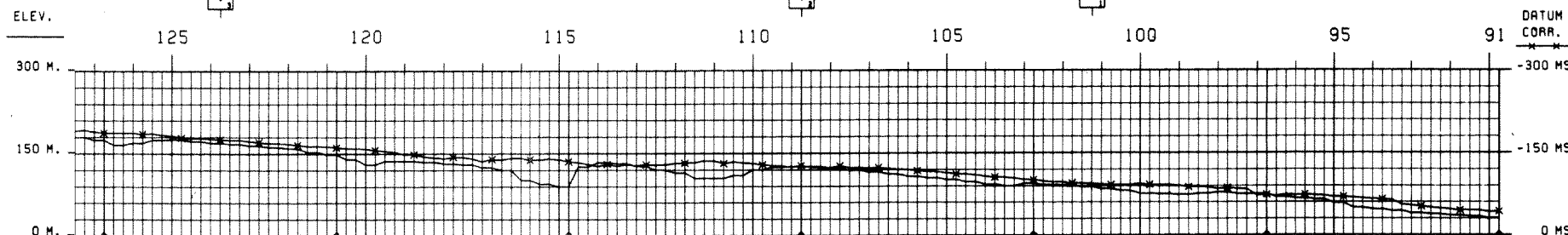
SP 123.75			
TIME	MS	MS	MS
0.02	1850	1850	
0.80	2100	2106	
1.15	2250	2560	
1.40	2400	2895	
1.70	3000	4911	
3.00	3800	4643	
5.00	4100	4513	

SP 108.75			
TIME	MS	MS	MS
0.02	1800	1800	
0.80	2100	2107	
1.15	2300	2785	
1.40	2500	3234	
1.65	3000	4940	
2.40	3500	4405	
3.00	3800	4817	
5.00	4100	4513	

SP 101.25			
TIME	MS	MS	MS
0.02	1700	1700	
0.80	2050	2081	
0.80	2150	2337	
1.10	2300	2880	
1.40	2550	3309	
1.80	3100	4779	
3.00	3800	4779	
5.00	4100	4513	

PC-5
SP-443-444

PC-4
SP-259-260



SNIA

WESTERN

RICERCHЕ GEOFISICHE

AREA ITALIA CENTRALE
PERMESSO CAMPOMARINO

DATE SHOT: OCTOBER, 1974
DATE PROCESSED: FEBRUARY, 1983

RECORDING DATA

PROCESSING SEQUENCE

PARTY NUMBER: A-105-SIAG
RECORDER: DFS-104
GAIN: A.S.C.
RECORDING FILTER (HZ): 12/82
RECORD LENGTH: 9 SEC
SAMPLE RATE (MS): 2

SUBSURFACE COVERAGE: 600 PCT
GROUP INTERVAL (METERS): 75
NUMBER OF GROUPS: 24

WEATHERING VELOCITY: M/S
STATIC COMPUTATION VELOCITY: 2000 M/S
DATUM PLANE (ABOVE SEA LEVEL): 0

EDIT GEO. AMPL. SR VMS LEN. SSEC
EDIT REEL N. 105009
PREPROCESSOR/DECON
DECON TYPE: MINIMUM PHASE INVERSE FILTER
MIN. PHAS. DIST: 18-24, MAX. PHAS. DIST: 180MS
NO. OF WINDOWS: 2
STOP AUTOCORRELATION: 4.0SEC.
DECON REEL N.

SPREAD DIMENSIONS

SURFACE CONSISTENT RESID. STATICS
VELOCITY ANALYSIS
NMO STATICS, MUTE APPLICATION
STRETCH DEPENDENT MUTE: 144PCT
SURFACE CONSISTENT RESID. STATICS

CENTRE OF SOURCE ARRAY
DIRECTION OF LINE

GEOPHONE TYPE: 14-HZ
GEOPHONE FREQUENCY: 24
GEOPHONE GROUP: DYNAMITE
ENERGY SOURCE: DYNAMITE
SHOT HOLES/S.P.: 1
AVERAGE CHARGE/SHOT: 18-25 M
AVERAGE SHOT DEPTH: 18-25 M

COHERENCY STACK: 600 PCT
STK REEL N. 106275
RMS GAIN
TIME VARIANT FILTER
VERTICAL & SPATIAL INTERPOLATION
15-50 HZ
13-48 HZ
8-38 HZ

LEGEND

TRACE INTERPOLATION: NO
G. I. FROM 75 M. TO 50 M.
MIGRATION HIGH ORDER: NO
PLAYBACK
HORIZONTAL SCALE: 8 CM./KM.
VERTICAL SCALE: 10 CM/SEC

VELOCITY ANALYSIS

INTERSECTIONS

ANALYST: [Signature] DATE: 9.83

LINE LOCATION MAP

