

NW

095E 99



SE

Conc. COSTA MOLINA

Permesso CALVERA

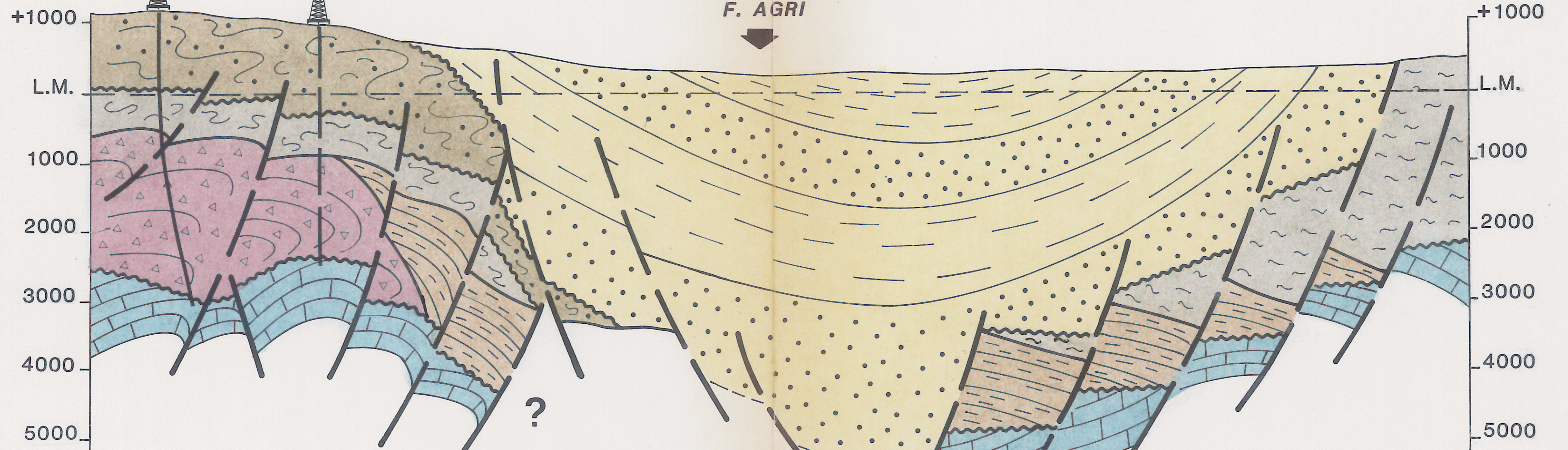
Permesso TORRENTE SAURO

COSTA MOLINA 3X
P.C.1255 m

TEMPA DEL VENTO 1
P.C.980 m

BACINO PLIO-QUATERNARIO DI SANT'ARCANGELO

F. AGRI



BASSO GRAVIMETRICO
ALTO MAGNETOMETRICO




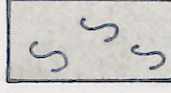
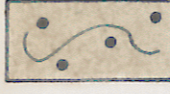
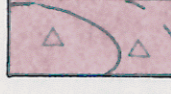


SORI

SEZIONE GEOLOGICA SCHEMATICA

Data : GIUGNO 1988

Figura : 2

legenda

-  PLIO-QUATERNARIO
-  UNITA' SICILIDI
-  UNITA' IRPINE
-  UNITA' LAGONEGRESI
-  UNITA' LIGURIDI
-  UNITA' PIATT. APULA INTERNA