

SORI

Data	Dis. N°	Allegato
SETT. 1987	278 A4	2

Linea PZ-573-86 /DBS-TVF

Conc. COSTA MOLINA

Perm. CALVERA

TEMPA DEL VENTO 1 (Proiett.) (50m a SUD)

PZ-582-87 (177)

AREA ITALY
PROSPECT CALVERA

RECORDING DATA PLAYBACK DATA

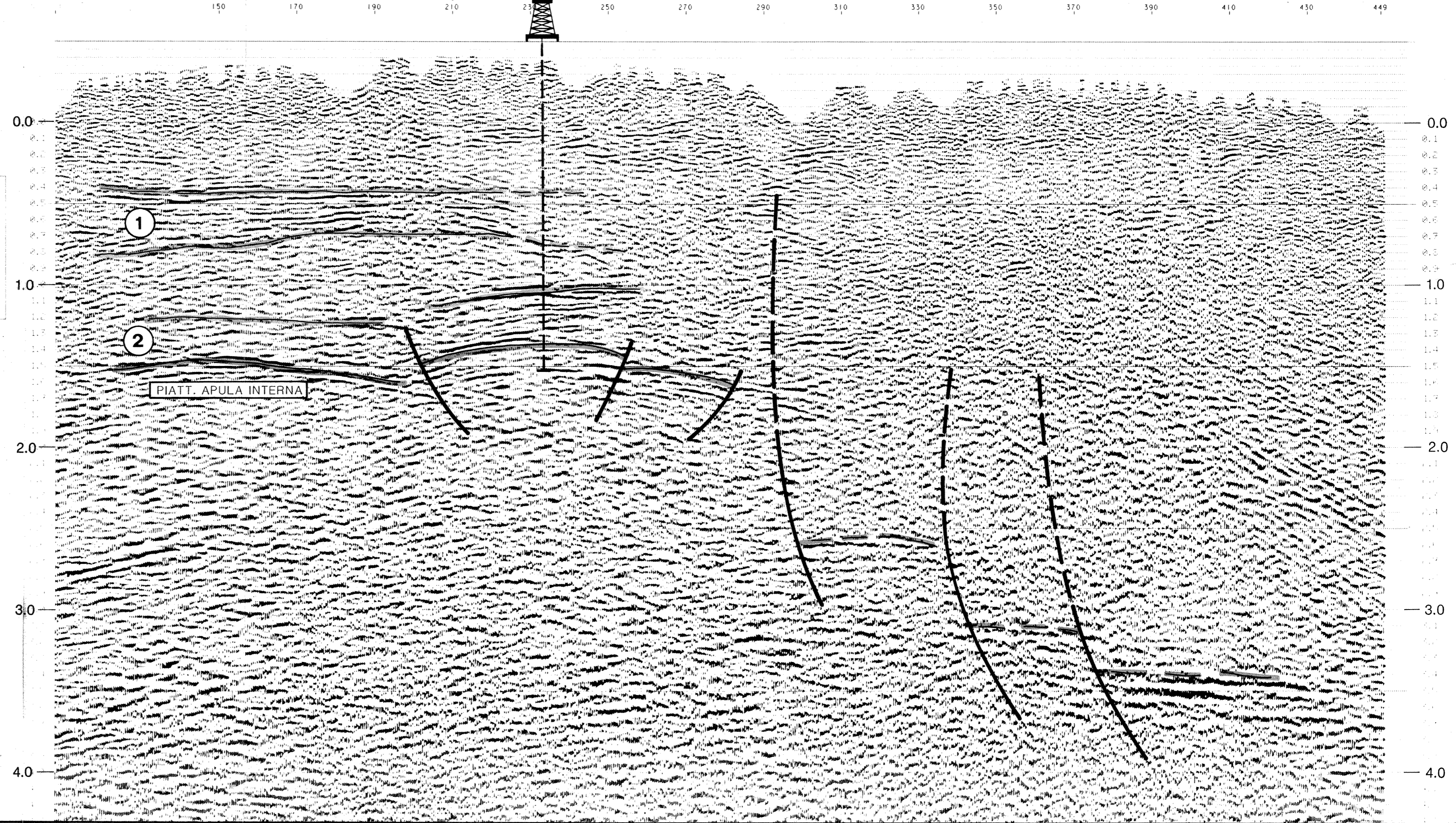
CONTRACTOR	PRAYLA	DATUM PLANE	400 M
PARTY NO.	R.I.L.G. X	VERTICAL SCALE	1 SEC. = 5 CM
RECORDING INSTRUMENT	SERCEL 348	HORIZONTAL SCALE	1:1
SAMPLE RATE	2 MS	POLARITY CONVENTION	SE 1M/2
RECORD LENGTH	9 SEC.	PREPROCESSING REEL	502482
FILTER	12.5 HZ - 12 DB	STACK REEL	40514
ALIASING FILTER	125 HZ - 12 DB	MIGRATION REEL	502187
DATE	01.1.1986	PREVIOUS PROCESSING	

SPREAD CONFIGURATION	1785 15 15 1785	SPREAD DIAGRAM	
TRACE / S.F.	120		

GROUP / INTERVAL	20 M	GEOPHONES / GROUP	24
GEOPHONES / HZ	0.5 M X 0.5 HZ	GEOPHONE PATTERN DIAGRAM	
ENERGY SOURCE	EXPLOSIVE	SOURCE PATTERN	
Avg. CHARGE / SHOT	10 KG	Avg. SHOT DEPTH	50 M

PROCESSING

INHT FORMAT: SEG B / 3AR		
EDIT / FLOATING POINT / GEOPHONE AMPL.		
TIME SAMPLING TO 4 MS		
NOISE SUPPRESSION		
SORTING TO COP GATHER		
AMPLITUDE RECOVERY / GEOM. SPREADING		
INSTRUMENT DEPHASING / MINIMUM PHASE		
D.B.S. / PREDICTIVE		
WD: 0.0-2.5 SEC OP: 4-120MS WL: 200	TIME	FREQUENCY
WD: 2.5-5.5 SEC OP: 4-120MS WL: 200	0.0-0.1 SEC.	1HZ-24DB-55HZ-48DB
AUTOMATIC STATIC SURFACE CONSISTENT	0.1-0.5 SEC.	1HZ-24DB-50HZ-48DB
VELOCITY ANALYSIS	0.5-1.5 SEC.	1HZ-24DB-45HZ-48DB
DATUM PLANE / REDUCTION VELOCITY	1.5-2.8 SEC.	1HZ-36DB-40HZ-72DB
COMPUTATION	2.8-3.7 SEC.	1HZ-24DB-35HZ-48DB
FIELD STATICS RECOMPUTATION	3.7-5.6 SEC.	1HZ-24DB-30HZ-48DB
AUTOMATIC STATIC SURFACE CONSISTENT		
NEW FIELD STATICS CORRECTIONS		
EXTREMUM CORRECTIONS		
COMPRESSIVE STACK / 5 FOLD / 1.4 / 1.4 / 1.4		
MINIMUM TO ZERO PHASE / CONVERSION		
T.V.F. FILTER		
TIME VARIANT EQUALIZATION		



- ① UNITA' LAGONEGRESI
INTERVALLO CARBONATICO
- ② UNITA' LAGONEGRESI
ARGILLE A BASSA VELOCITA' SISMICA

