

Northern Petroleum (UK) Limited
Via E.Q. Visconti 12-14 Roma
Istanza "d22.GR.NP"
(Canale di Sicilia)

MONTAGGIO GEOLOGICO
E MINERARIO

Allegato 1

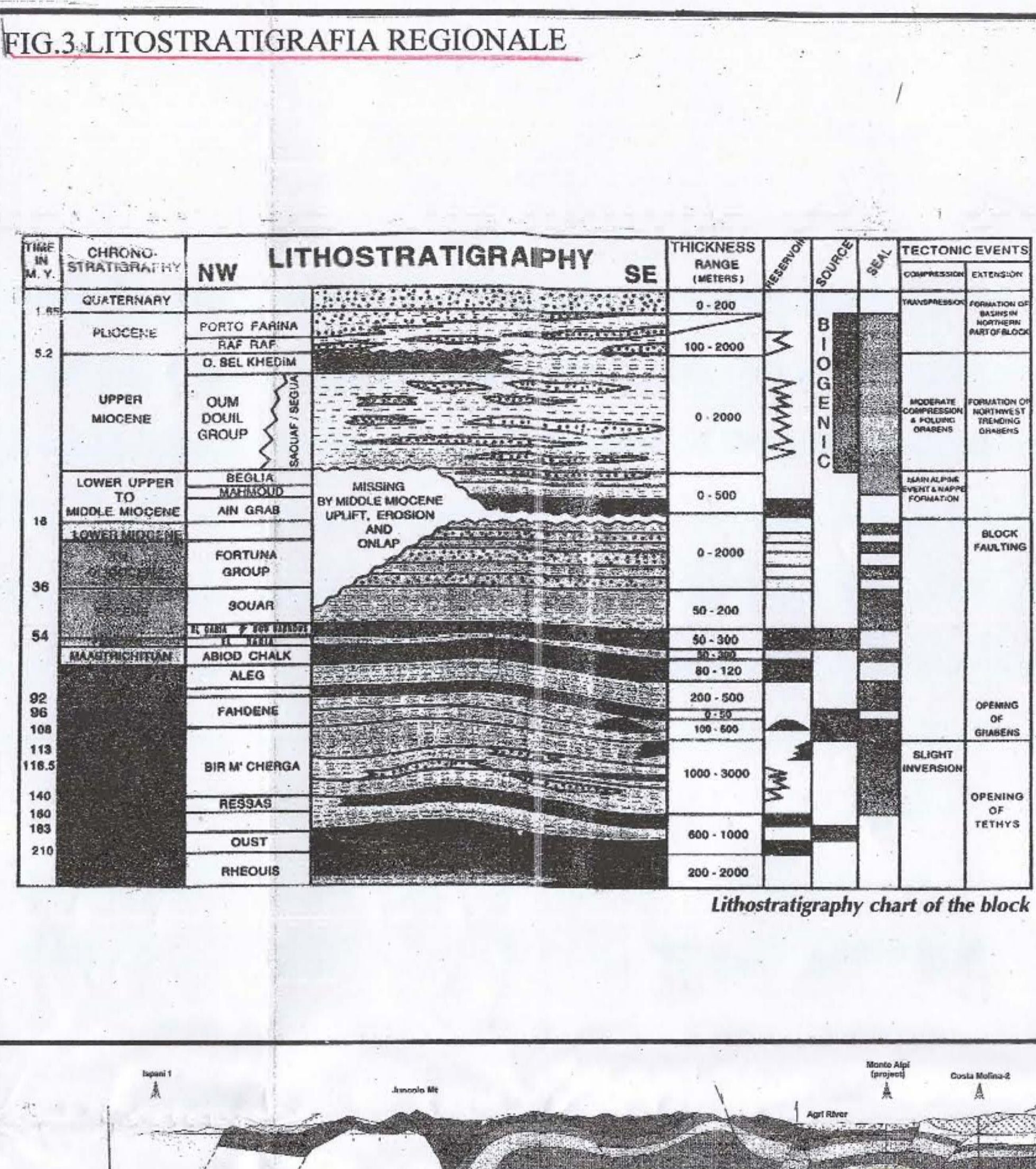
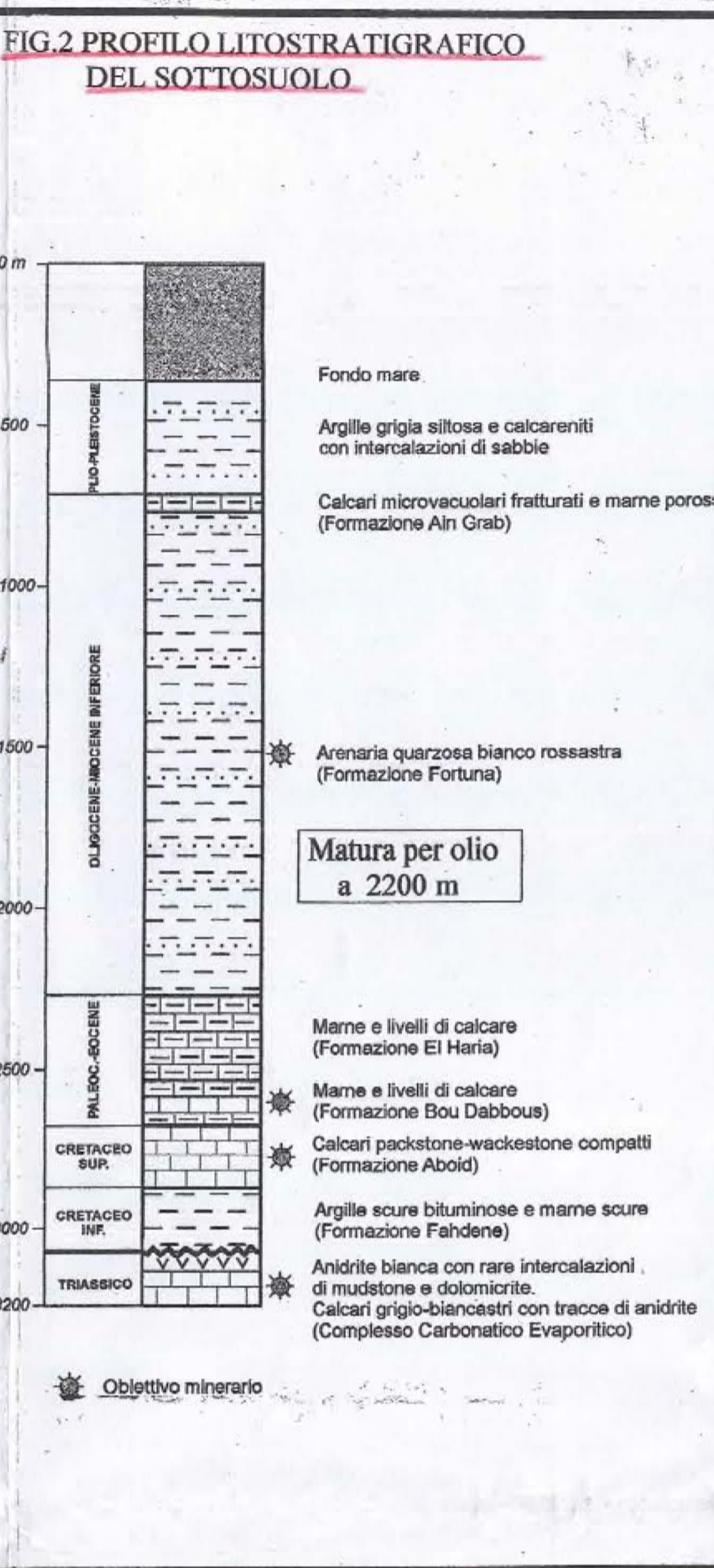
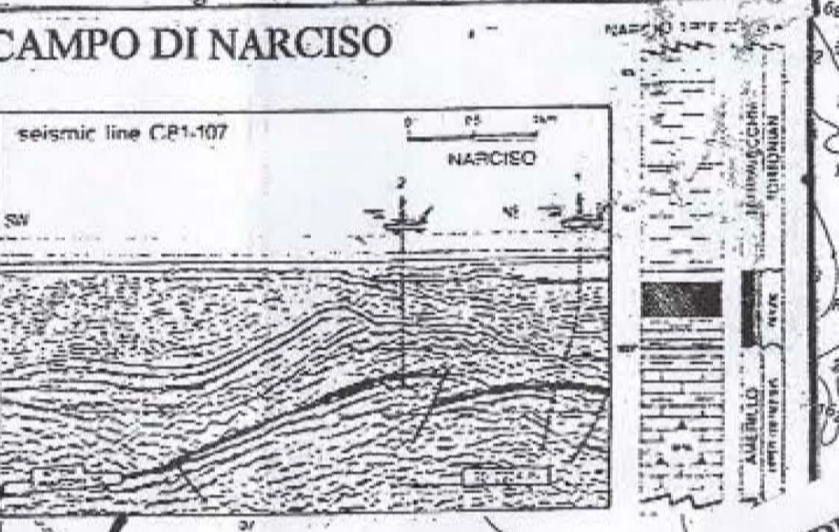
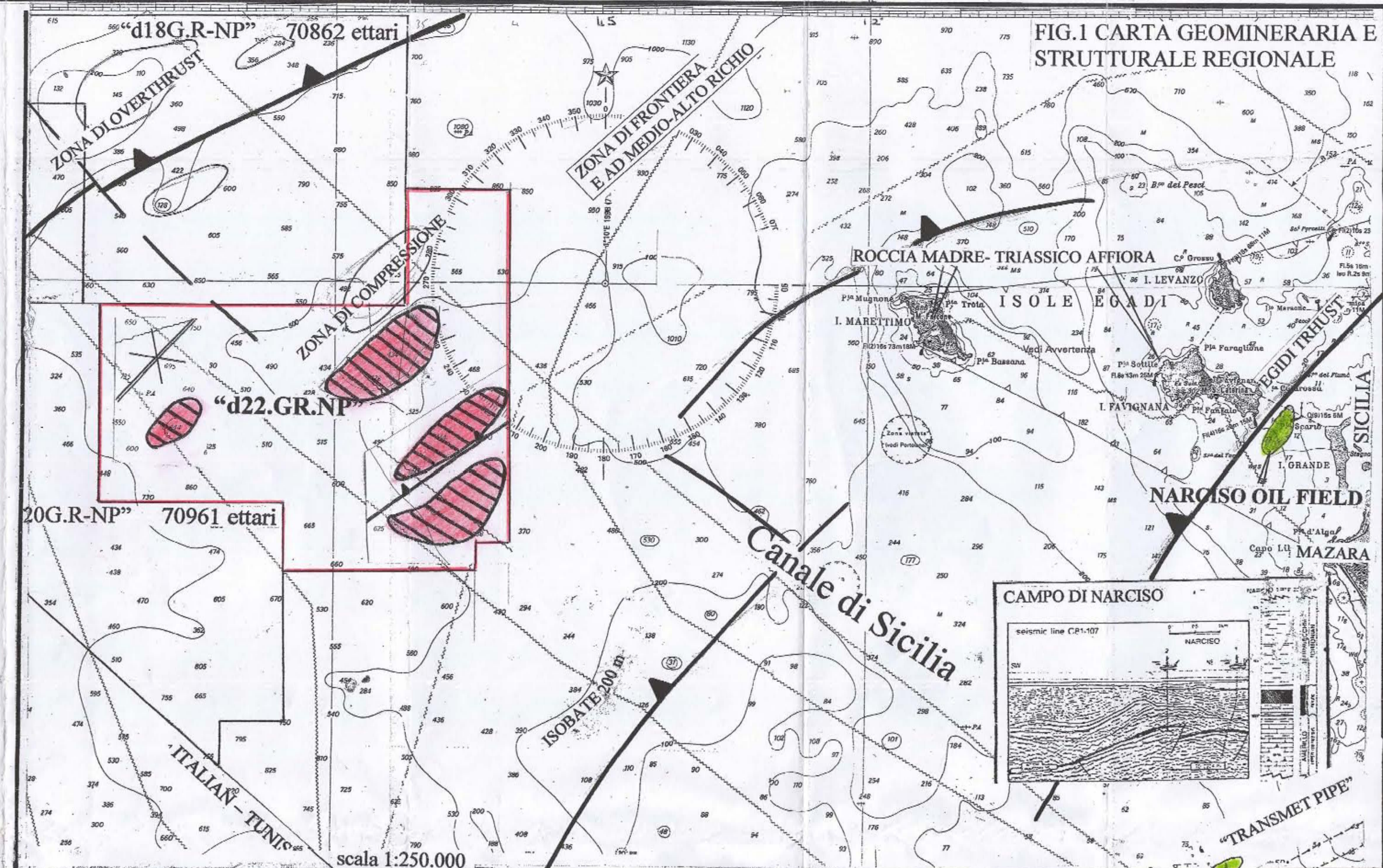
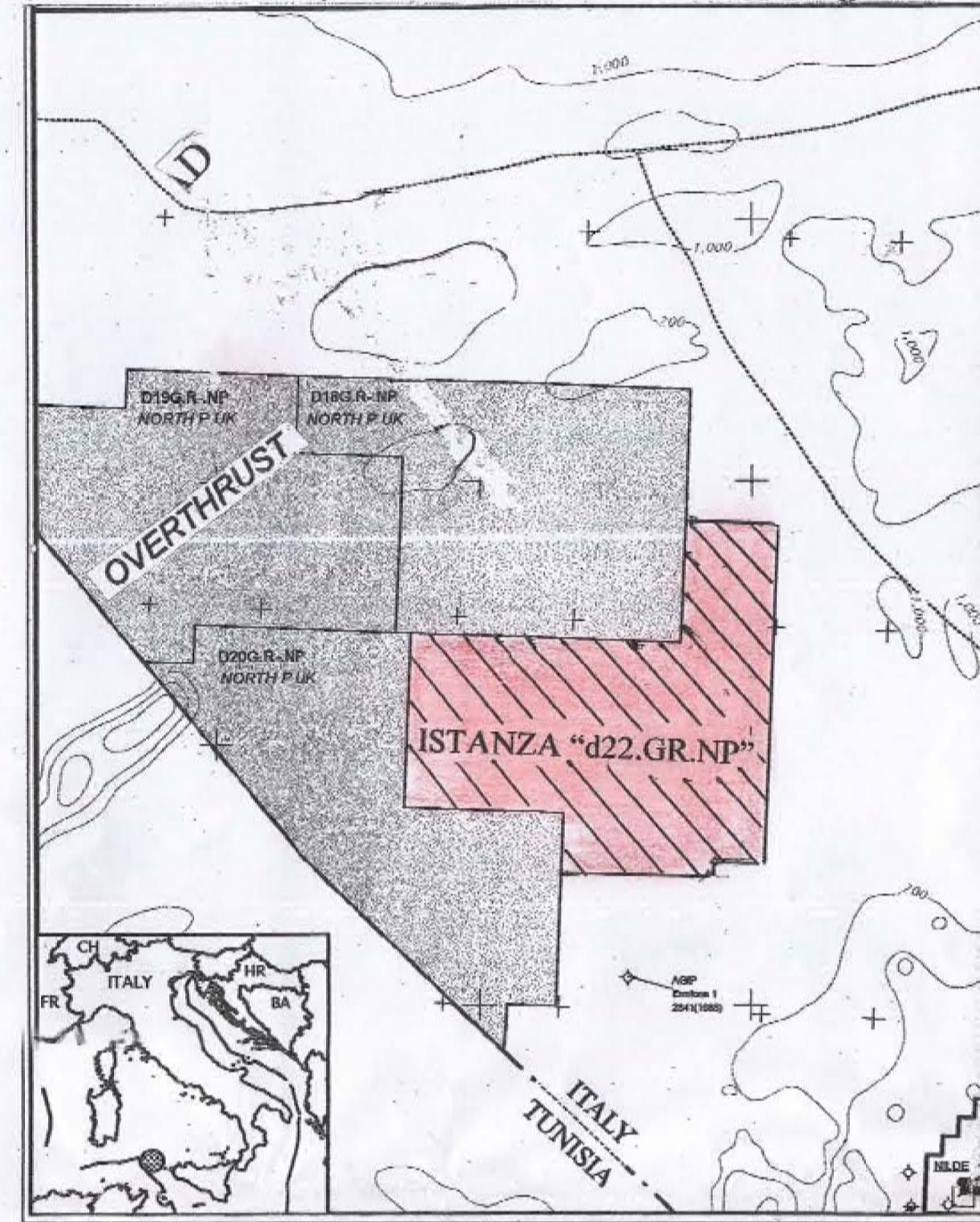


FIG. 4A. ROCCIA MADRE REGIONALE

Age/Formation	Lithology	TOC %	Maturity level	Porosity Potential	Thickness (m)	Keygen type
Lower Eocene	Dark limestone	Up to 4.6	Immature to mature	0.5 - 35.0	50 - 300	Wide distributed Type II
Upper Eocene	Thin limestone	1.0 - 3.0	Immature to mature	4 - 13	10 - 80	Type II
Lower Eocene	Dark limestone	0.5 - 3.0	Mature oil window	1 - 93	30 - 30	Type II / III
Albion	Thin limestone	0.5 - 2	Mature oil window	0.2 - 10	100 - 200	Wide distributed Type II
Lower Paleocene	Thin limestone	0.5 - 2	Mature oil window	0.2 - 10	100 - 200	Wide distributed Type II
Collium	Dark, shaly limestone	Up to 1.7	Oil/gas window	3 - 13	30 - 100	Type II
Albion	Dark, shaly limestone	Up to 1.3	Oil window	1.5 - 39.5	80	Type II
Triassic	Black and dark gray limestone	0.5 - 3		1 - 7	30	Type II & III

FIG. 4B. SERBATOIO REGIONALE

Formation	Composition	Porosity	Permeability	SWATH	TRIT	SEAL
Albion	Dark limestone	6 - 14	Low	400	OR / Emerald	Shalestone M'charge
Albion	Dark limestone	6 - 14	0 - 45	400	OR / Emerald	Shalestone M'charge
Albion	Dark limestone	6 - 14	0 - 45	400	OR / Emerald	Shalestone M'charge
Albion	Dark limestone	6 - 14	0 - 45	400	OR / Emerald	Shalestone M'charge
Albion	Dark limestone	6 - 14	0 - 45	400	OR / Emerald	Shalestone M'charge
Albion	Dark limestone	6 - 14	0 - 45	400	OR / Emerald	Shalestone M'charge
Albion	Dark limestone	6 - 14	0 - 45	400	OR / Emerald	Shalestone M'charge
Albion	Dark limestone	6 - 14	0 - 45	400	OR / Emerald	Shalestone M'charge
Albion	Dark limestone	6 - 14	0 - 45	400	OR / Emerald	Shalestone M'charge
Albion	Dark limestone	6 - 14	0 - 45	400	OR / Emerald	Shalestone M'charge

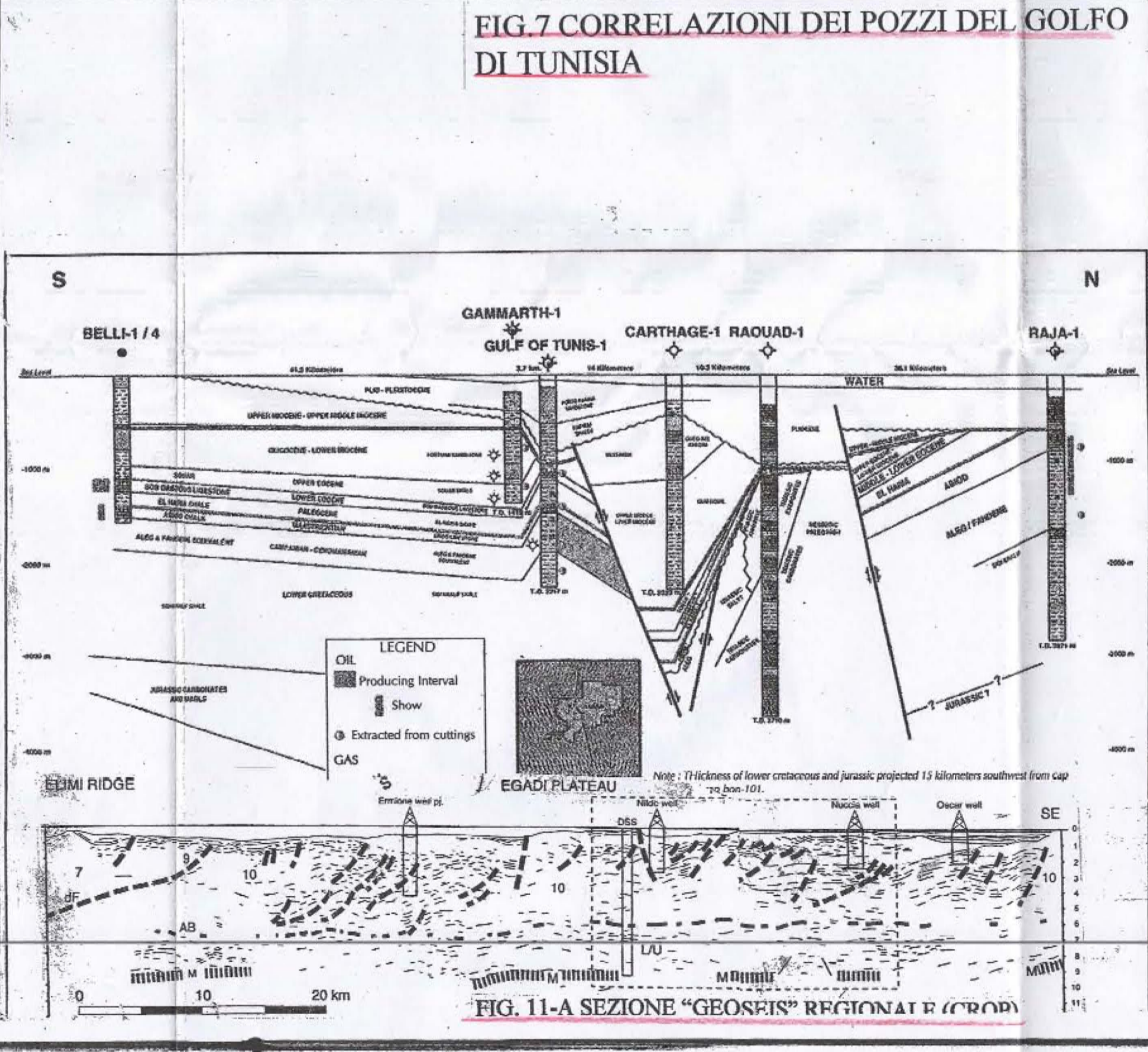
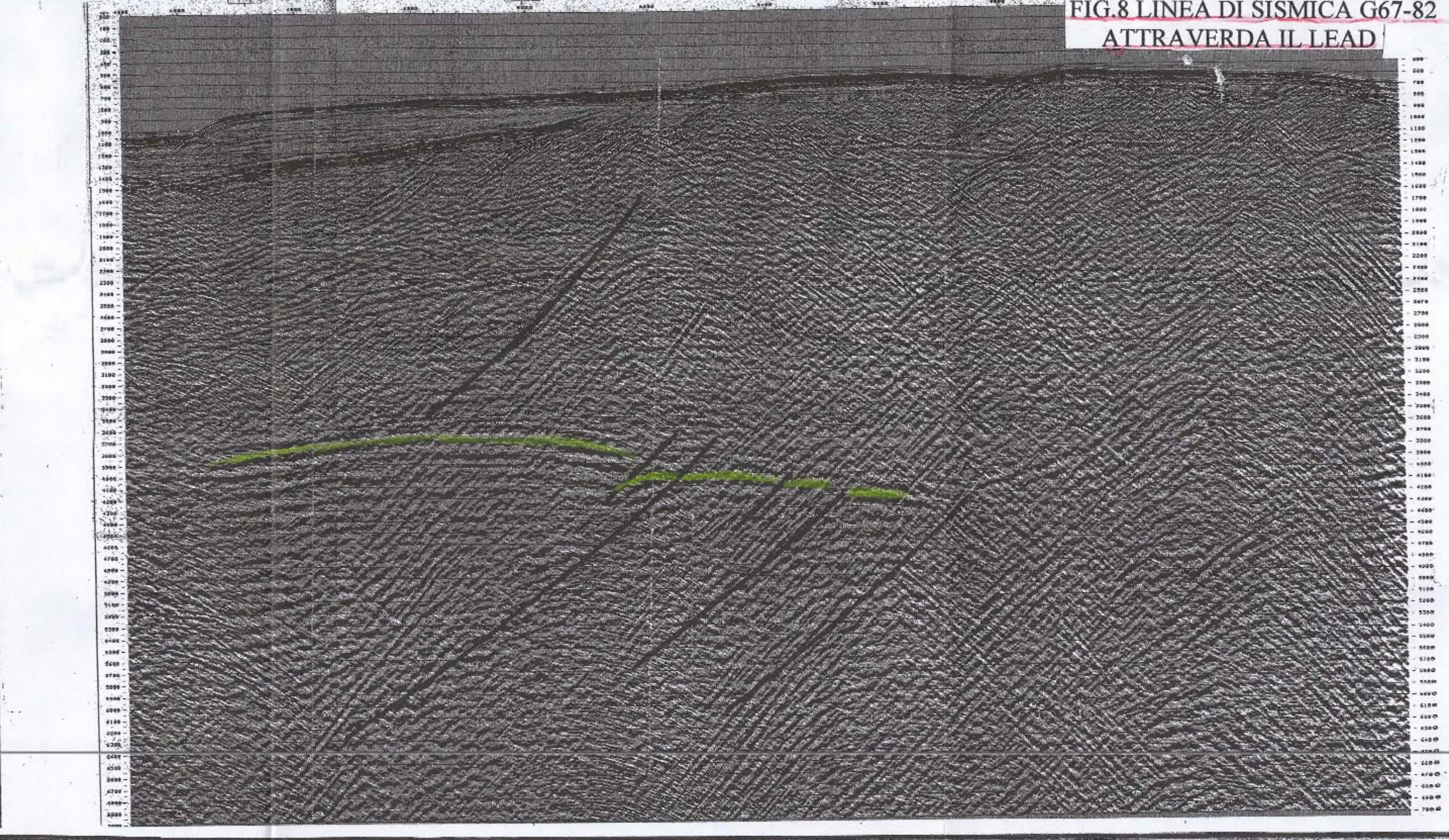
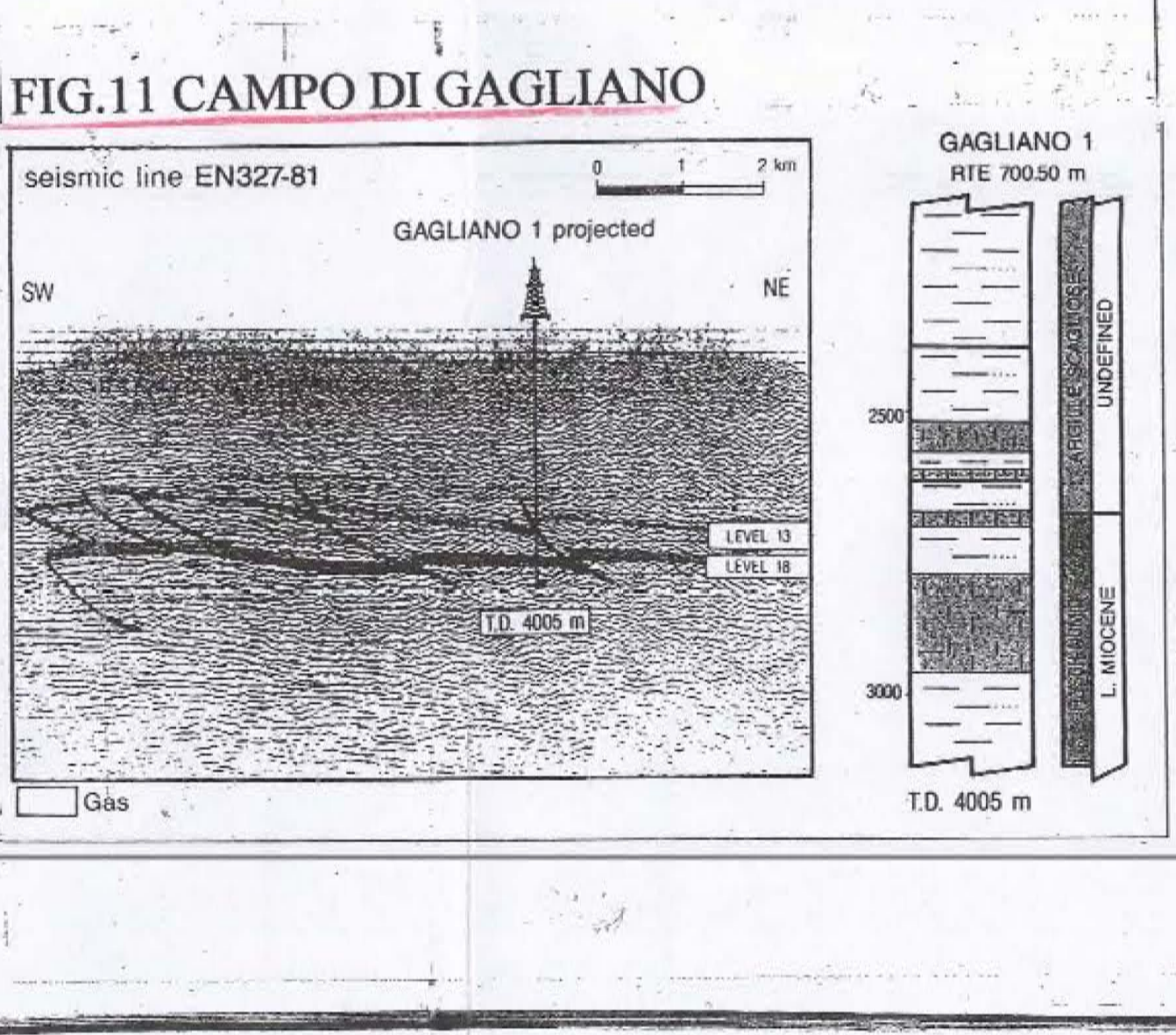
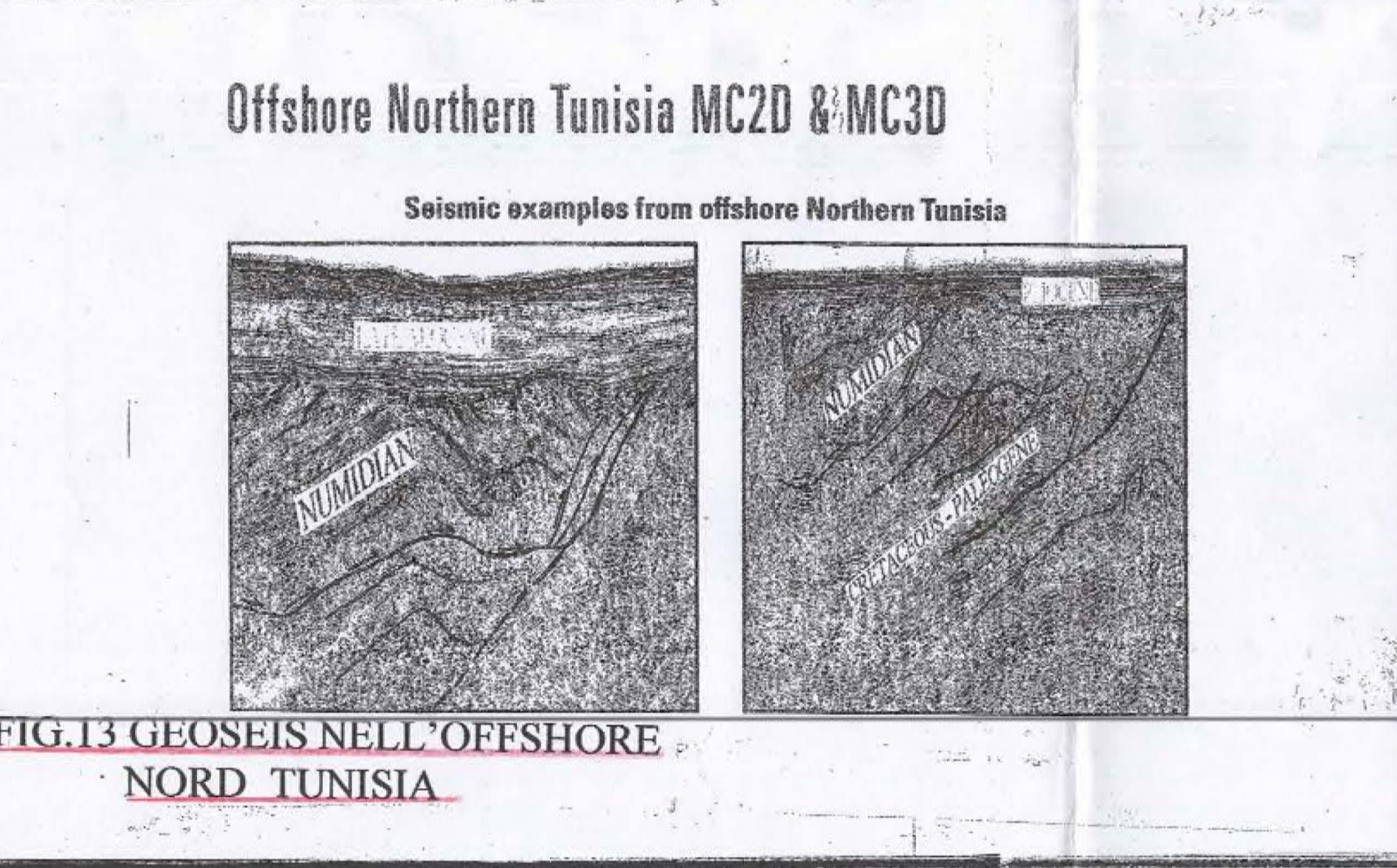
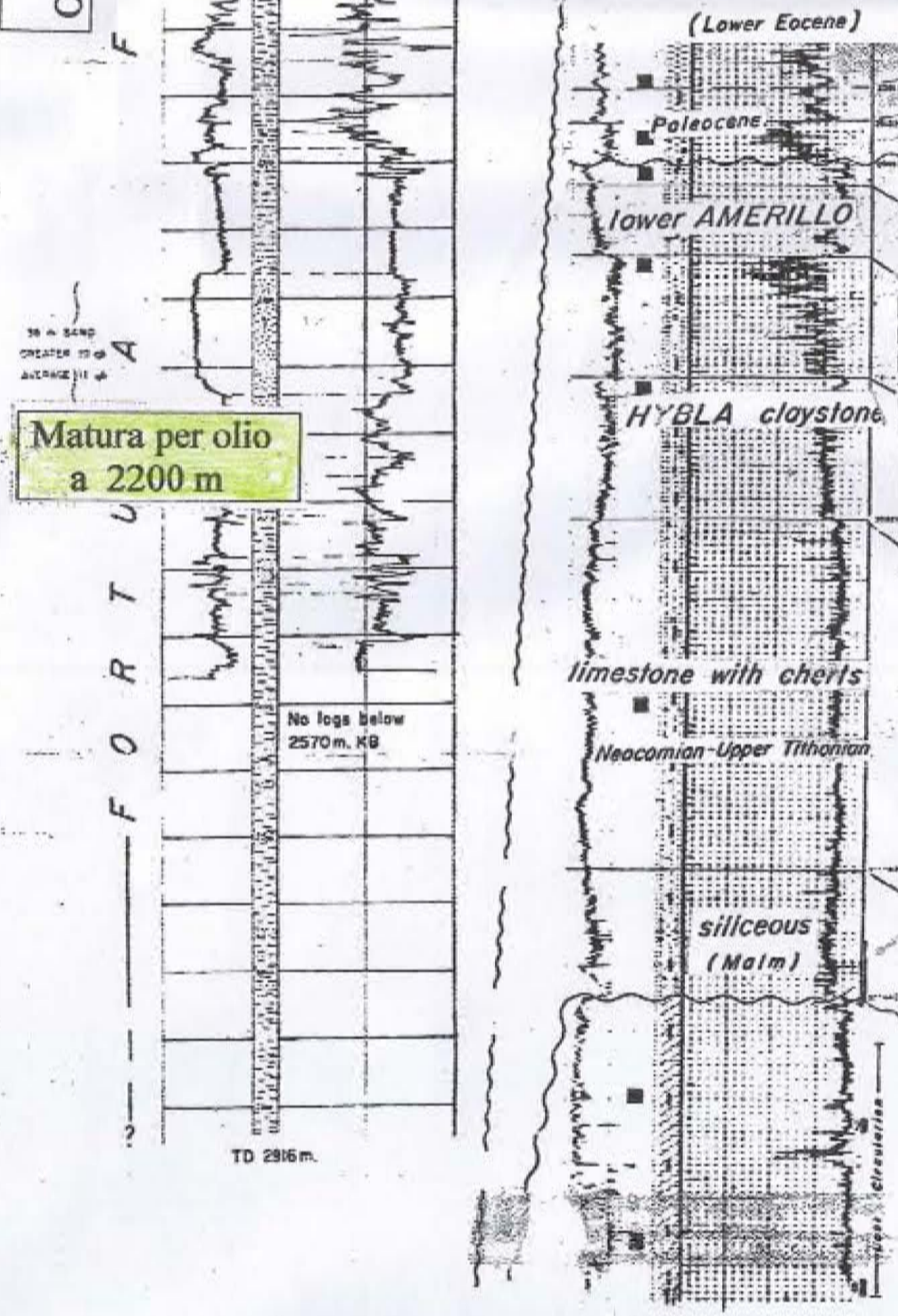
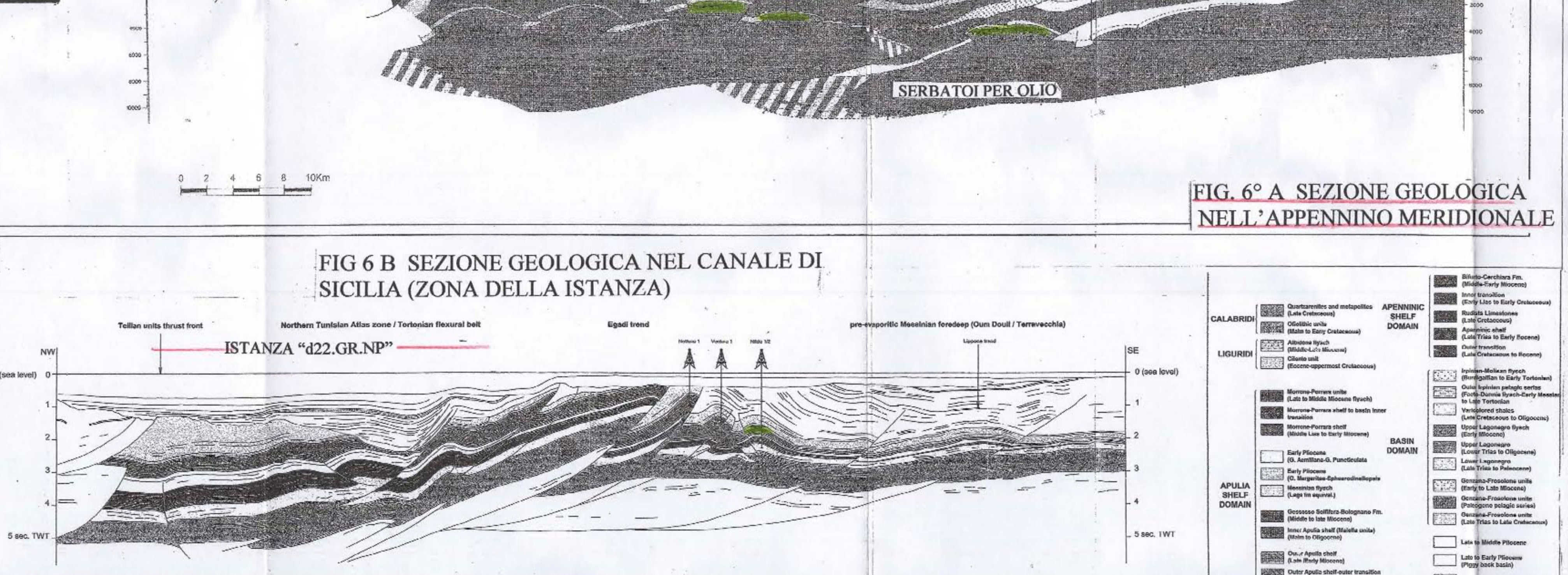
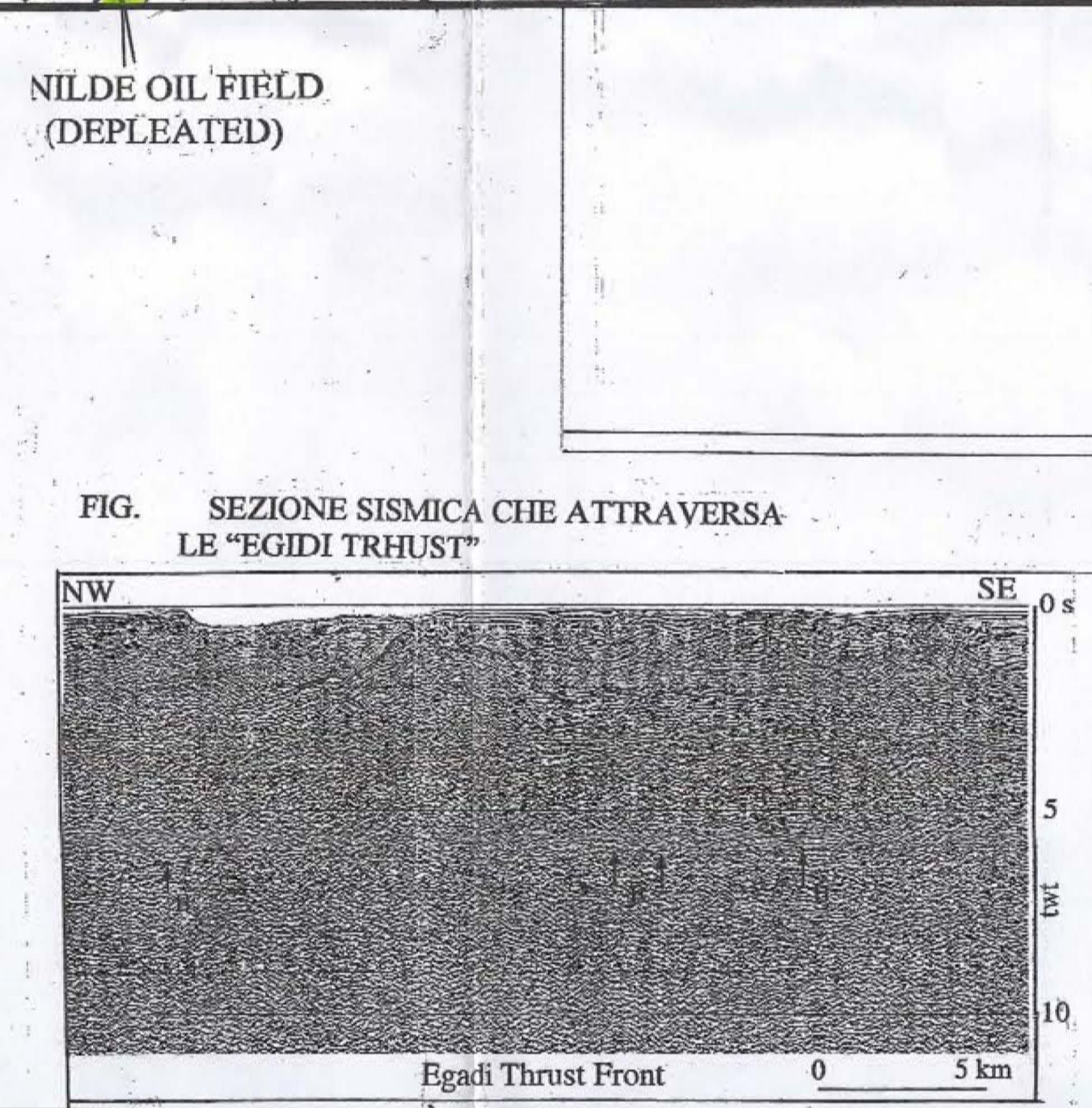
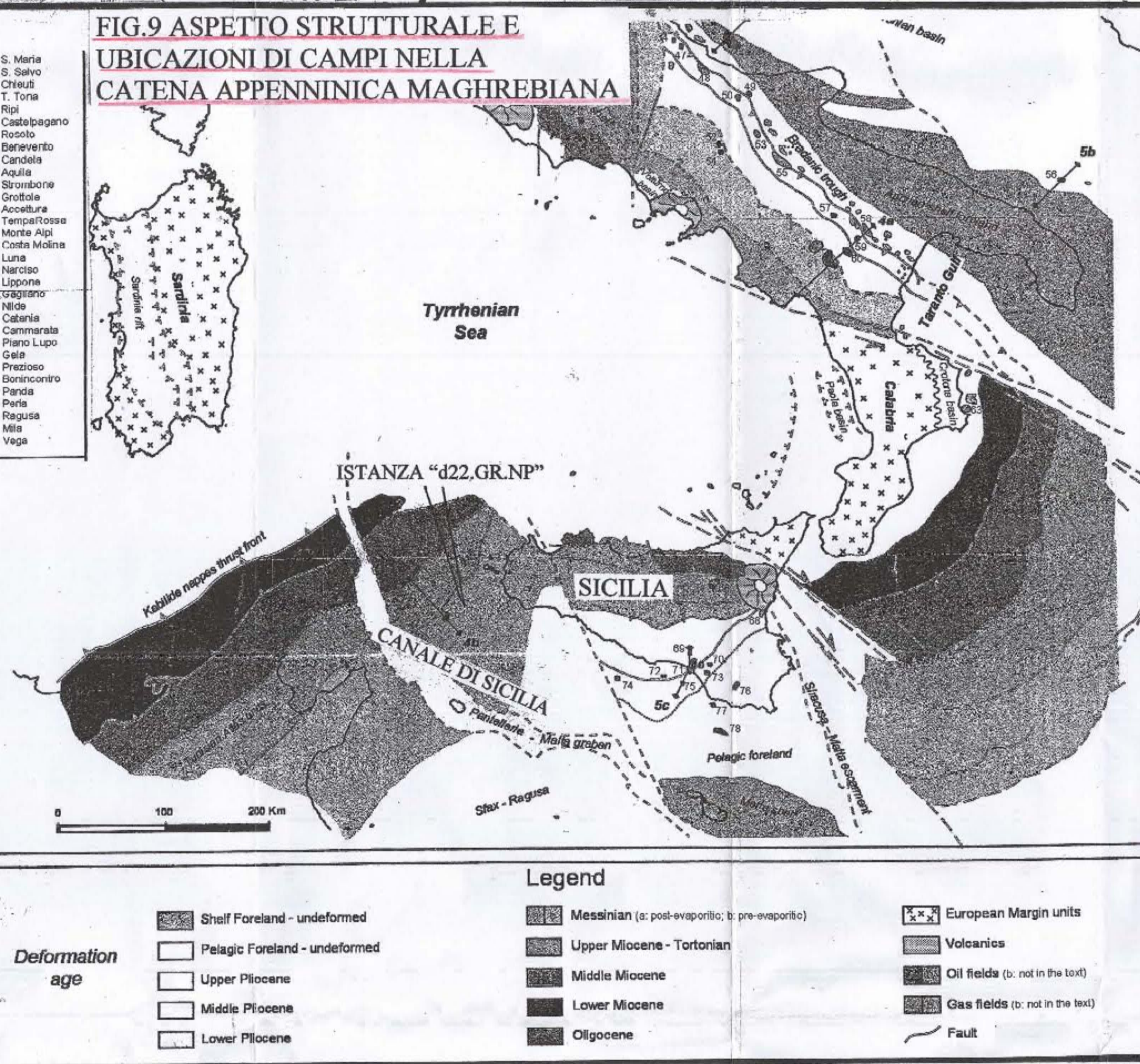
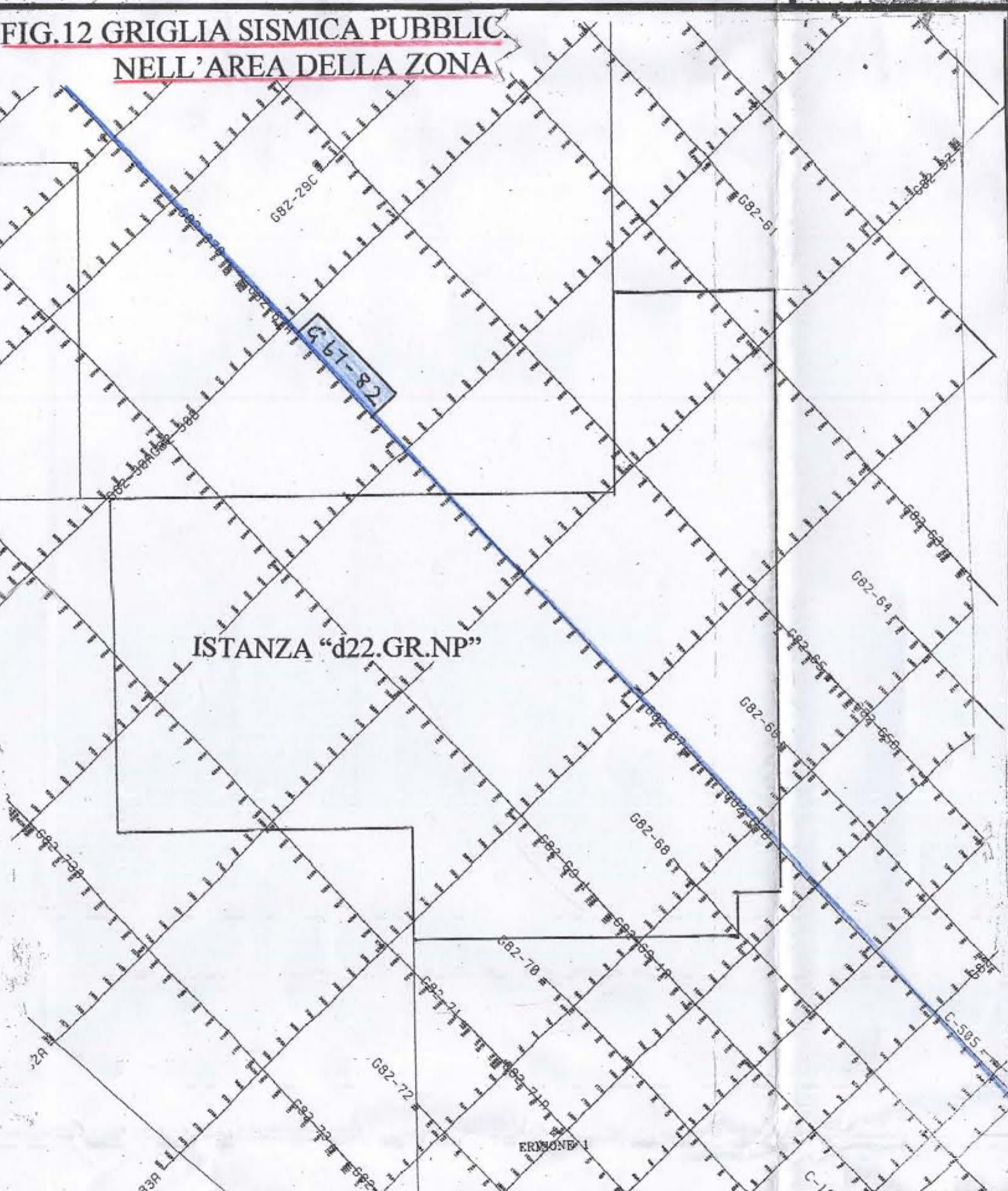
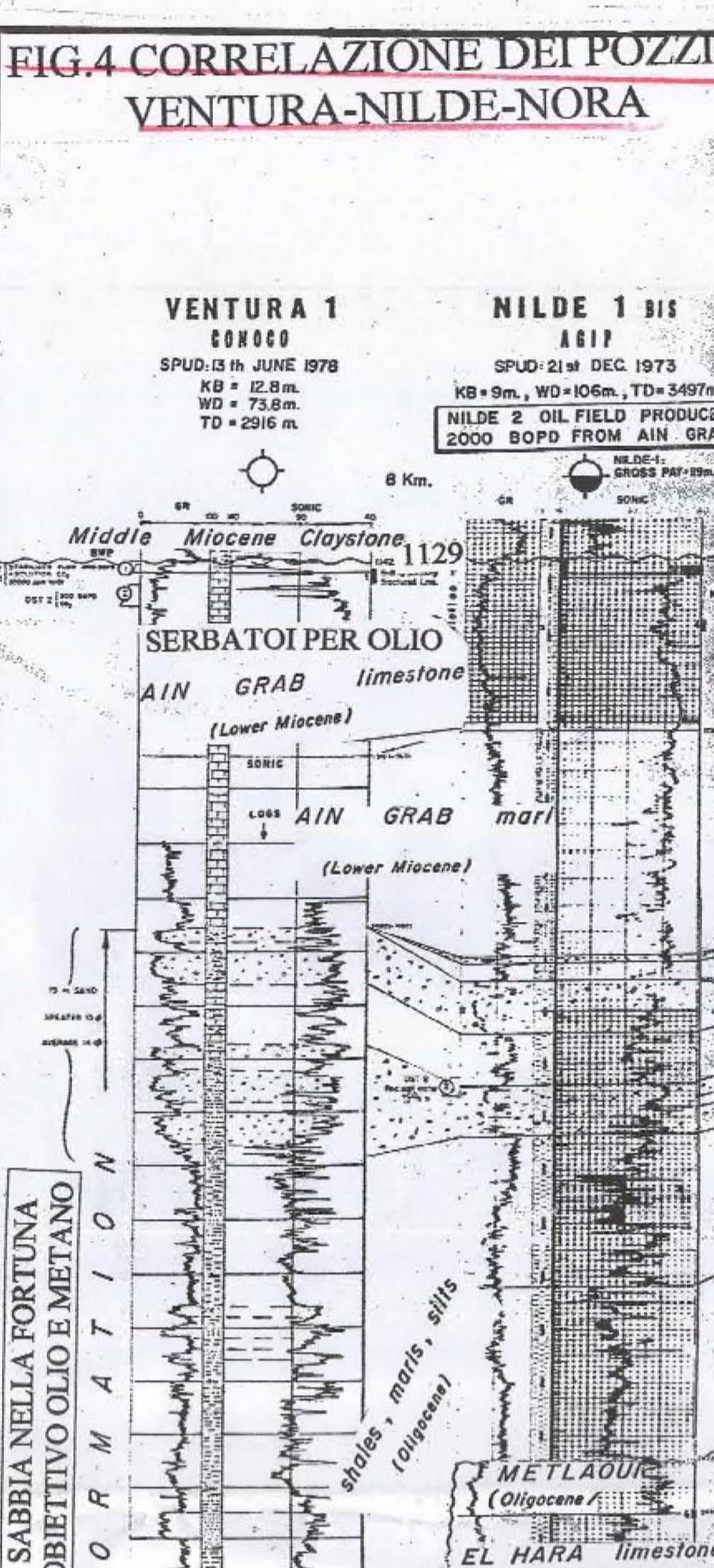


FIG. 3.D. SOMMARIO DEL POZZO ESPLORATIVO DELL' OCCIDENTALE

NARCISO	Substantial oil shows tested (10.0) from Ain Grab at ± 850m (NES-2)
NADA	Minor oil shows, top Ain Grab (176m), 20° API, 88 bls/8 hours (200b/d) 37° API, top of Nilde (fractured ls.) at -1670m.
NORMA	125 m ³ oil/day (780 b/d), 37° API, top Ain Grab 1900m, CO ₂ in solution.
NATI 1	Originally (Nilde 2) at 3000 b/d (38° API) from Ain Grab at 1600m. (Nilde 2, 3, 3b) 8000 b/d from two wells.
NIVES, NERINA	Oil traces at top of Ain Grab
NELLA	Residual oil staining, top Ain Grab
SOFIA	Gas blowout (CO ₂ with 24% CH ₄)
NORA	10 MCF/D (mostly CO ₂) and 24 b/d 41.7° API Ain Grab at -2150m. Live oil shows in Bou De (equiv.), minor oil/gas shows in Amerillo.
ALFA	Gas show (CO ₂) from Ain Grab
NOVELLA	Minor gas shows in Tertiary; traces dead oil Mesozoic carbonates.
ORLANDO-1	Minor dead oil in carbonates
ORIONE, PAOLA	Several minor CH shows in Pliocene & Miocene
ONDA	Minor gas shows in Tortonian sands
TRAPANI, SEGESTA	Minor gas shows in Tortonian sands
GAZZERA	Weak fluorescence in Ain Grab
CARLA	

FIG. 3.D. SOMMARIO DEL POZZO ESPLORATIVO DELL' OCCIDENTALE