

ALL 2

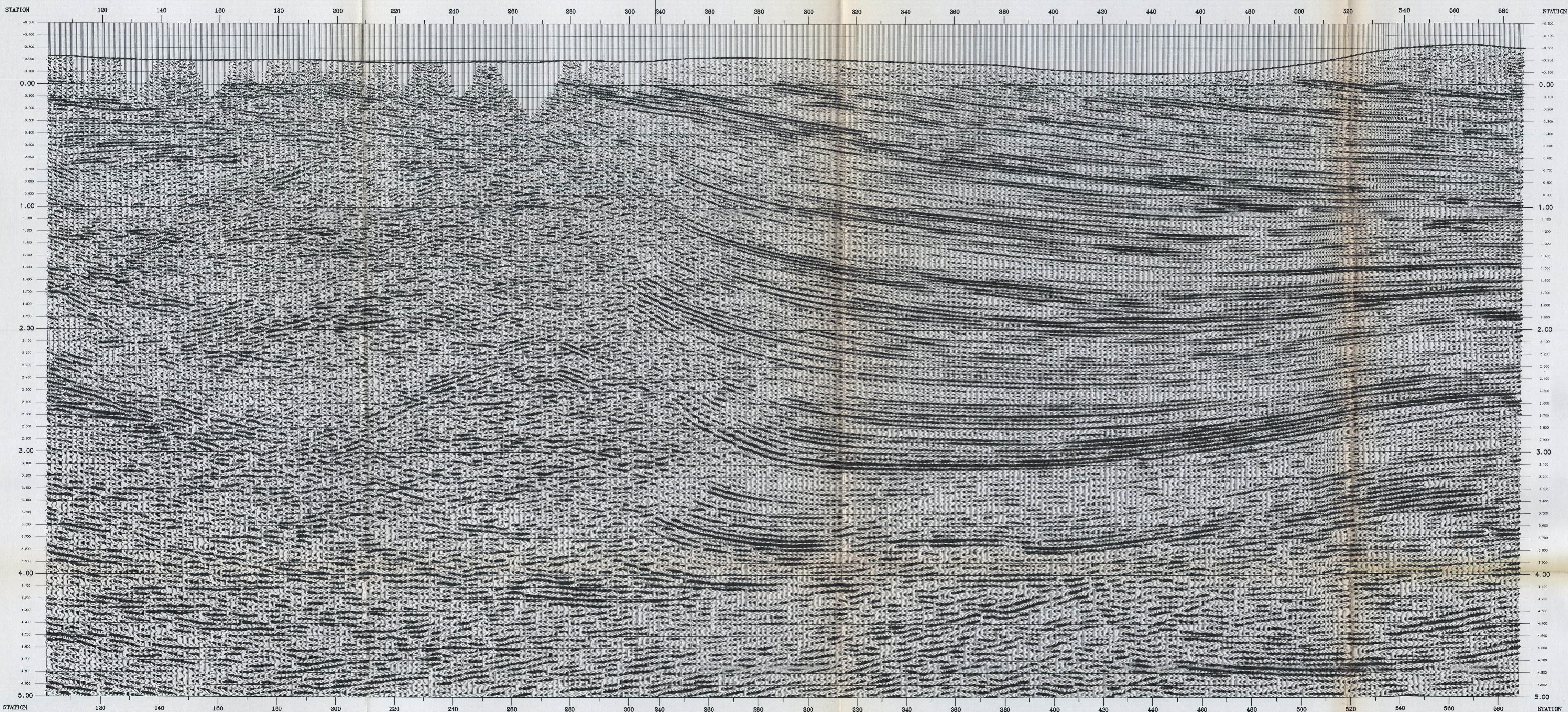
BG RIMI s.p.a.
Il Responsabile Esplorazione
Walter Pattinieri
Walter



BRITISH GAS RIMI
Castel di Lama
LINES: AP-103-91-FR / APF-34-90
SP/VP: 101-308 / 249-589

NORTH-EAST

MIGRATION (MERGED)



PROCESSING HISTORY

PROCESSING 80 / 60 FOLD CIP STACK
 INPUT: FROM SECT RECORDS
 EDIT OF BAD TRACKS: FROM SECT RECORDS
 GEOMETRY DEFINITION: STRAIGHT LINE USING SUPPLIED FIELD COORDINATES
 SPHERICAL DIVERGENCE CORRECTION: SCALAR = 1.45 * T
 DATUM STATIC CORRECTION: DATUM = 0.0 M, REFERENCE VELOCITY = 8000 M/S
 SPATIAL NOTCH FILTER: LINEAR NOISE REMOVAL
 BINNING: GATHERED INTO 15 / 15.0M SINE
 DECONVOLUTION BEFORE STACK: TYPE: PREDICTOR GAP LENGTH: 848
 DESIGN GATE AP-103-91-FR: 67 M, 1.0 - 2.0 SECS, 1.5 - 4.5 SECS
 DESIGN GATE APF-34-90: 46 M, 1.0 - 2.0 SECS, 1.5 - 4.5 SECS
 SURFACE CONSISTENT MERIDAL STATICS: DERIVED FROM MERIDAL CORRECTED GATHERS
 INTERMEDIATE VELOCITY ANALYSIS: USING DITAN: 11 OF 4 PER LOCATION
 SURFACE CONSISTENT MERIDAL STATICS (2ND PASS): MERIDAL STATICS CORRECTED GATHERS
 FINAL VELOCITY ANALYSIS: USING DITAN: 11 OF 4 PER LOCATION
 NOISE ATTENUATION: BEST DOMAIN FK-DECONVOLUTION
 DIP AVERAGE CORRECTION: KINEMATIC ALGORITHM
 NORMAL MOVEMENT CORRECTION: VELOCITIES OBTAINED FROM FINAL VELOCITY ANALYSIS
 METS OF FIRST BEAMS & MID SERVICE: LINE AP-103-91-FR / LINE APF-34-90
 TRACE REALIZATION: 80% OVERLAPPING BALANCE, 800M GATES
 PORT-STACK MERGE: LINE AP-103-91-FR PORTAL BEAMS TO MATCH
 FREQUENCY COMPENSATION: RADIAL FREQUENCY FILTER (100-500 SIGNAL AVERAGE)
 WAVE EQUATION MIGRATION: OBTAIN 2 FILTER DIFFERENCE ALGORITHM
 TIME VARIANT BANDPASS FILTER: TIME (MS) BANDPASS (HZ)
 TRACE REALIZATION: 80% OVERLAPPING BALANCE, 800M GATES
 STATIC CORRECTION: FROM FLOATING DATUM TO DATUM = 0.0 M.

DISPLAY PARAMETERS

HORIZONTAL SCALE: 1:185,000 60.0 TPI VERTICAL SCALE: 5 CM/SEC
 DATE: AUGUST 1999 BID NUMBER:
 PLOTTER: CVO THERMAL PLOT DPI: 400 BLAS: UK GAIN: 0.0
 POLARITY: NEG STANDARD - COMPENSATION BEHAVIOR AS A NEGATIVE NUMBER ON PLOT
 (DISPLAYED AS A WHITE TRACE)
 QUALITY CONTROL: M Proctor DATE: Aug 1999

VERITAS DGC LIMITED,
CROMPTON WAY
CRAWLEY,
WEST SUSSEX RH10 2QR
ENGLAND

PROCESSED ON AN HP META COMPUTER USING
VERITAS'S PROPRIETARY SOFTWARE