



12000% MIGRATION

AGIP S.P.A.  
PERMIT G. R4, R5 AS  
PENN GEOPH. CONSULTANTS

S.P. 101-1128

1 KM

TIME	VRMS	INTV
0	1508	1508
143	1508	1508
622	1848	2514
1095	2161	2879
1450	2357	3065
2184	2618	3599
2440	2844	4913
3330	3754	5382
3965	4067	5420

TIME	VRMS	INTV
0	1508	1508
124	1508	1508
248	1521	1534
1089	2004	2155
1388	2109	2454
1799	2344	3065
2184	2618	3581
2508	2997	4877
3537	3480	5191
3965	4002	5366

TIME	VRMS	INTV
0	1508	1508
124	1508	1508
255	1534	1558
950	2031	2195
1332	2455	4154
1655	2853	4162
2153	3207	4466
3977	4119	4915

TIME	VRMS	INTV
0	1508	1508
136	1508	1534
287	1521	2103
398	1978	2631
634	2553	2983
1120	2953	3297
1792	3245	4745
2465	3715	4807
3983	4302	5114

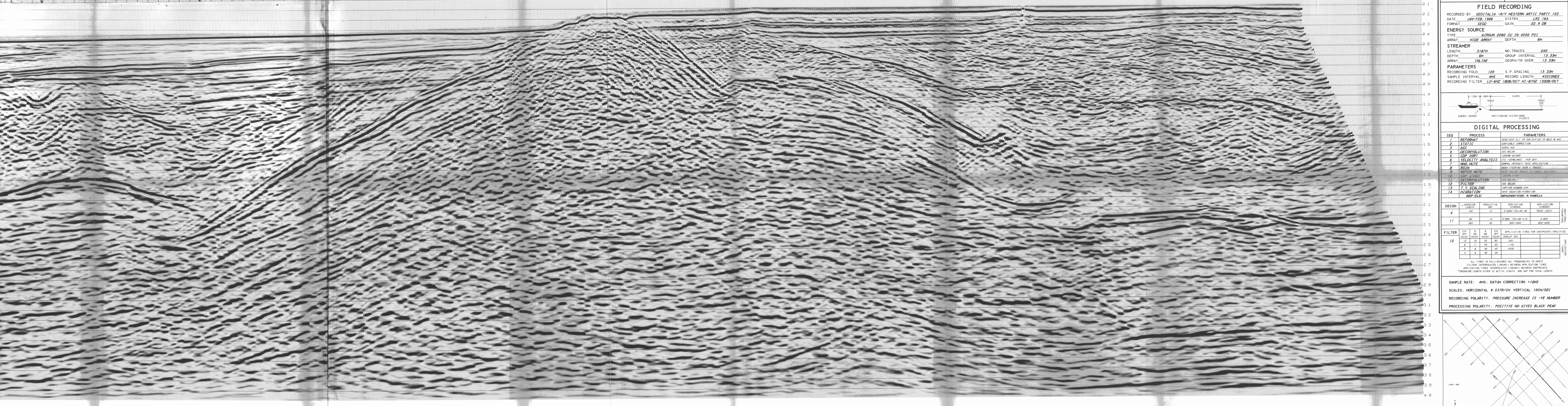
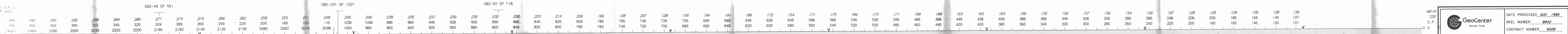
TIME	VRMS	INTV
0	1508	1508
267	1521	1506
454	1600	3091
560	2031	3183
834	2461	3894
1523	3349	3894
3983	4263	4967

TIME	VRMS	INTV
0	1508	1508
323	1508	1508
495	1548	1866
628	1626	2569
1288	2161	4618
1942	3006	4618
3977	4237	5027

TIME	VRMS	INTV
0	1508	1508
392	1508	1723
665	1600	2569
1263	1887	2163
1574	2135	2934
1885	2514	3615
2527	3310	5595
3983	4289	

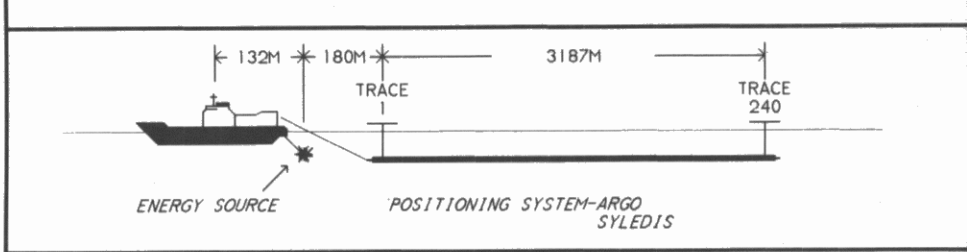
TIME	VRMS	INTV
0	1508	1508
392	1508	1723
665	1600	2569
1263	1887	2163
1574	2135	2934
1885	2514	3615
2527	3310	5595
3983	4289	

TIME	VRMS	INTV
0	1508	1508
392	1508	1723
665	1600	2569
1263	1887	2163
1574	2135	2934
1885	2514	3615
2527	3310	5595
3983	4289	



DATE PROCESSED	AUG. 1986
REEL NUMBER	8842
CONTRACT NUMBER	6008

FIELD RECORDING	
RECORDED BY	GEOTIALIA -R/V WESTERN ARCTIC PARTY 103
DATE	JAN-FEB 1986
FORMAT	SEGD
ENERGY SOURCE	AIRGUN 2000 CU IN 4500 PSI
ARRAY	HIDE ARRAY
STREAMER	3187M
LENGTH	3187M
DEPTH	6M
ARRAY	INLINE
RECORDING FOLD	120
SAMPLE INTERVAL	4MS
RECORD LENGTH	45SECONDS
RECORDING FILTER	LO-6HZ 180B/OCT HI-87HZ 1320B/OCT



DIGITAL PROCESSING		
SEQ	PROCESS	PARAMETERS
1	REFORMAT	SEGD-SEGD 21 TO 51M @ 120 TR MISS @ 400
2	STATIC	REMOVABLE CORRECTIONS
3	AGC	500MS AGC
4	DECONVOLUTION	SEE BELOW
5	LOOP SORT	1200M GAP
6	VELOCITY ANALYSIS	CYS -S-BALANCE 1/28 3/2M
7	IND. MUTE	NORMAL -MUTE/OUT -MUTE APPLICATION
8	REST	REST -EXCEPT OVER 1 INCHES
9	NOTCH MUTE	REST -EXCEPT TRACKS TO CHANNEL MULTIPLE
10	LOOP STACK	1200M STACK
11	DECONVOLUTION	SEE BELOW
12	FILTER	SEE BELOW
13	T.V. SCALING	HARTING METHOD 4M
14	MIGRATION	REST -EXCEPT ON MIGRATION
	AGIP-ELDI	REPRESENTATIVE: R. RAMELLA

DECON	UPSTAIR LENGTH	PREDICTIVE GAP	DERIVATION WINDOWS	APPLICATION WINDOWS
4	180	12	S-8000 FOLLOW UP	TRACE LENGTH
11	80	12	S-8000 FOLLOW UP	0-800
	280	40	800-4000	800-4000

