

LINE PZ-322-78  
 SPS 100-444 CHPS 97-780

DBS FILTERED TIME SECTION  
 WITH ADAPTIVE FK FILTERING

TOTAL MINERARIA  
 AVIGLIANO, ITALY

RECORDING PARAMETERS

SHOT BY WESTERN R.G.  
 DATE 14-26 JANUARY 1979  
 DIRECTION SHOT NORTH-EAST  
 FOLD OF RECORDING 6  
 ENERGY SOURCE DYNAMITE  
 NOMINAL SHOT INTERVAL 240 m  
 TOTAL CHARGE SIZE VARIABLE 3 - 15 kg  
 SHOT DEPTH VARIABLE 10 - 30 m  
 SHOT ARRAY SINGLE HOLE

CABLE  
 NUMBER OF GROUPS 96  
 GROUPS PER GROUP UNKNOWN  
 GEOPHONE TYPE UNKNOWN  
 GROUP INTERVAL 30 m  
 NOMINAL NEAR TRACE OFFSET 15 m  
 NOMINAL FAR TRACE OFFSET 2865 m  
 RECEIVER ARRAY UNKNOWN

INSTRUMENTS  
 SENSOR SP4 14 Hz  
 SAMPLE INTERVAL 2 ms  
 RECORD LENGTH 7.0 s  
 LOW CUT FILTER 12 Hz/20 dB/octave  
 HIGH CUT FILTER OUT

POLARITY UNKNOWN

SPREAD CONFIGURATION

PROCESSING SEQUENCE

PROCESSED BY GECO U.K. DATE APRIL 1987  
 PROCESSING RECORD LENGTH 5.0 s  
 PROCESSING SAMPLE INTERVAL 4 ms

INITIAL PROCESSING  
 GATE TRACES AND FIELD GAIN RECOVERY  
 TRACE EDIT  
 RESAMPLING TO 4 ms USING 30 Hz ANTI-ALIAS FILTER

COMMON MID POINT GATHER  
 SPHERICAL DIVERGENCE COMPENSATION  
 REGIONAL VELOCITY FUNCTION USED

EXPONENTIAL GAIN RECOVERY

STATIC CORRECTION  
 VELOCITY CURVE APPLIED TO SMOOTH SURFACE DATUM

DECONVOLUTION  
 TIME OPERATION LENGTH 16 ms  
 TOTAL OPERATION LENGTH 240 ms  
 NUMBER OF OPERATIONS 15  
 MULTI-CORRELATION DECON WINDOW  
 AT 0 = 0.10/4.10 s  
 AT 1800 = 0.05/4.05 s  
 AT 2500 = 1.00/5.00 s  
 0.2 s

WHITE NOISE NOISE  
 APPLICATION GATE SINGLE TRACE

SURFACE CONSISTENT RESIDUAL STATIC CORRECTION  
 ANALYSIS PERFORMED AT 0.5 s L. DATUM + 500 m  
 USING QUICK SEARCH METHOD  
 PRE PROCESSING FILTER 12-35 Hz  
 ANALYSIS WINDOW 0.5/3.0 s

NMO CORRECTION  
 STACKING VELOCITIES DERIVED FROM CYS TYPE ANALYSIS

SURFACE CONSISTENT RESIDUAL STATIC CORRECTION  
 ANALYSIS PERFORMED AT 0.5 s L. DATUM + 500 m  
 REFERENCE TRACE COMPOSED OF SINGLE CMP  
 PRE PROCESSING FILTER 12-35 Hz  
 CROSS CORRELATION WINDOW 0.5/3.5 s

PRE-STACK MUTE  
 AMPLITUDE MODULATION  
 MUTE WINDOW 0.5/3.5 s

STATIC CORRECTION  
 LONG WAVELENGTH FIELD STATICS APPLIED TO 0.5 s L. DATUM + 500 m

COMMON MID POINT STACK  
 ROOT IN SCALAR APPLIED

TIME VARIANT BANDPASS FILTER

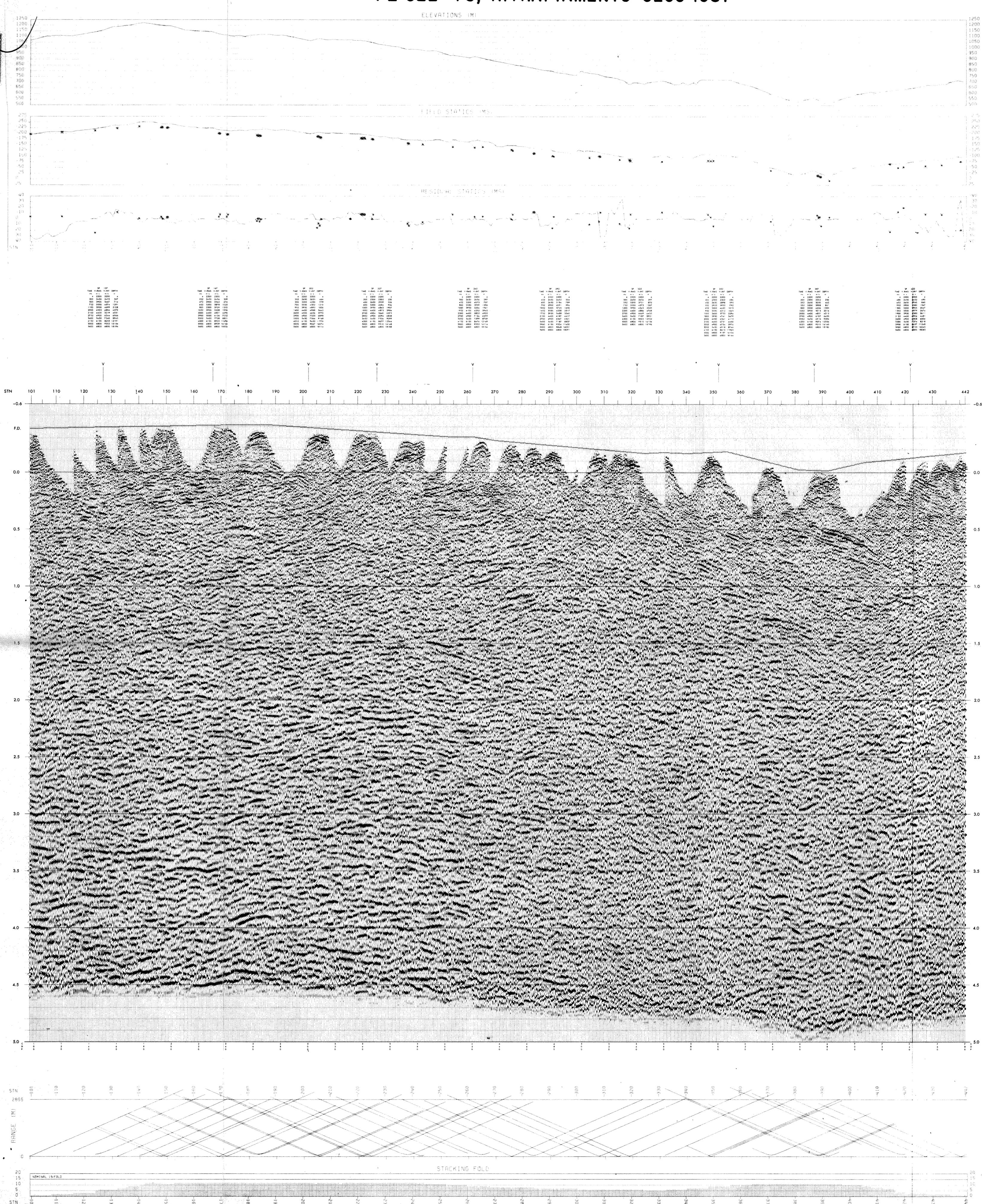
FREQUENCY	LOW CUT HZ	HIGH CUT HZ
0.5	5.85 10	70 80
0.3	5.85 10	60 70
1.0	5.85 10	50 60
0.5	5.85 10	40 50
3.5/5.0	5.85 10	30 40

TIME VARIANT SCALING  
 500 ms WINDOW, 500 OVERLAP

ADAPTIVE FK FILTER  
 FK FILTERS NORMALIZED OVER CMP RANGE +/- 10 m/1/100 m  
 FILTERS APPLIED IN X-DIRECTION  
 NUMBER OF X-DIRECTION FILTER POINTS 21  
 NUMBER OF Y-DIRECTION FILTER POINTS 15  
 DATA HEAD EPIC 255

DISPLAY PARAMETERS

HORIZONTAL SCALE 1 : 25,000  
 VERTICAL SCALE 5 cm/s  
 GAIN 0 dB  
 BIAS 10 %  
 POS. TRIT NEGATIVE NUMBER ON TRACE REPRESENTED BY WHITE TROUGH  
 ANNOTATION STATION INDENTED



PERMESSO DI RICERCA AVIGLIANO  
 RELAZIONE FINALE