

LINE PZ-322-78 S.P. 101 S.P. 442

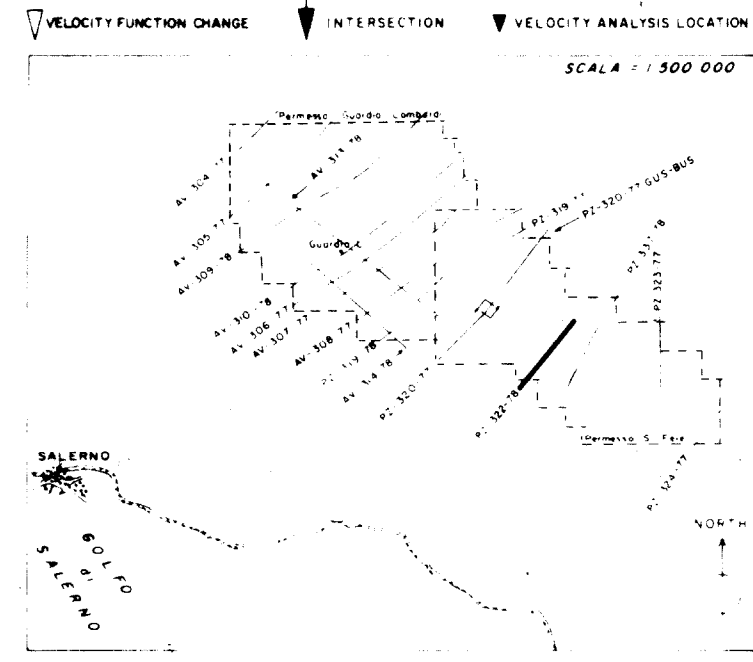
1200% DBS-TVF REFERENCE 250212M

Agip AREA ITALIA - ZONA 4 WESTERN PROSPECT S. FELE

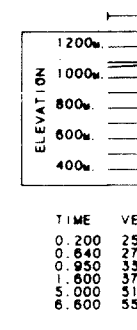
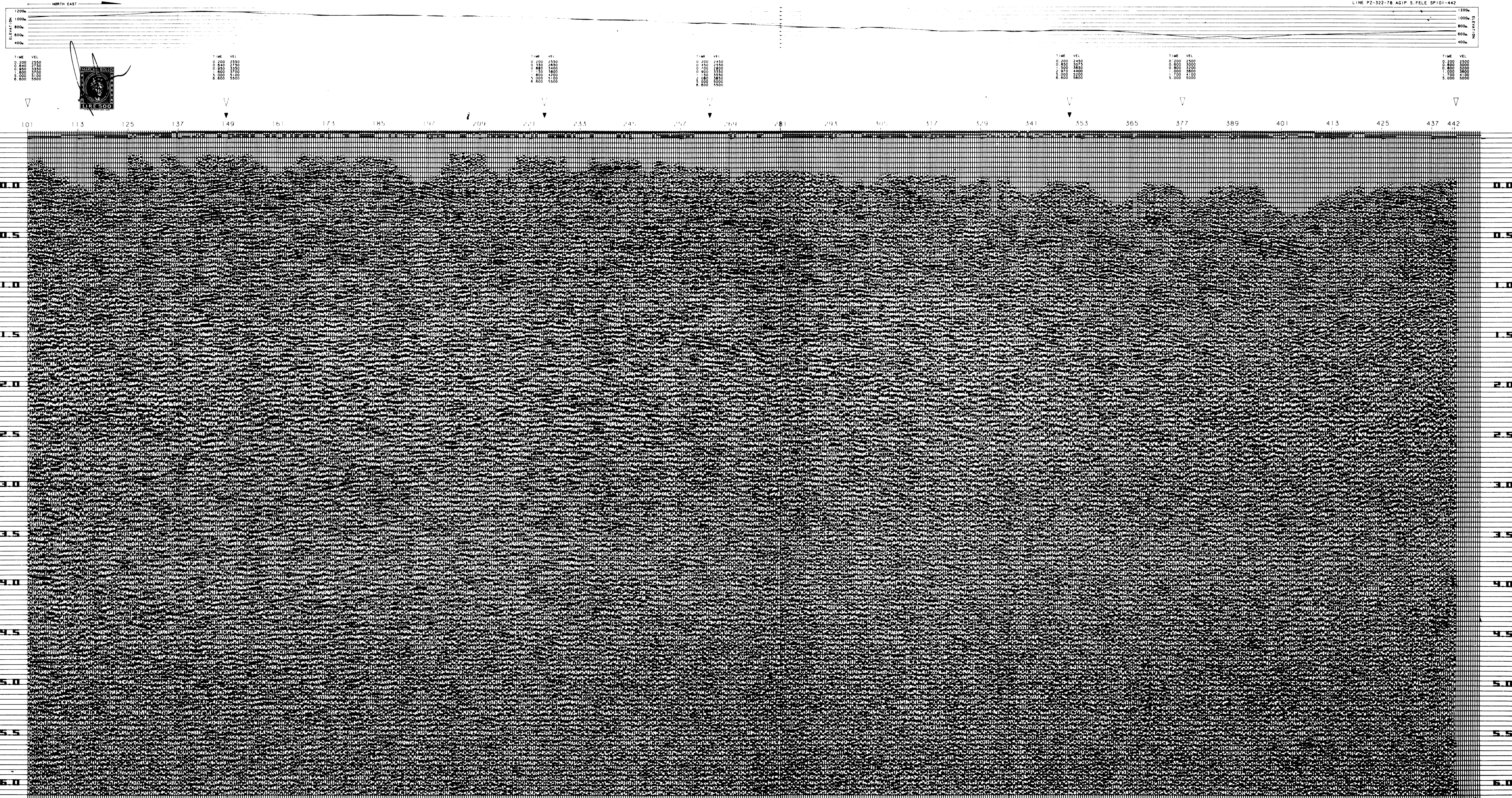
RECORDING DATA	PLAYBACK DATA
SHOT BY: WESTERN	SAMPLE RATE: 6000 Hz
MAGNETIC RECORDER: EUS 805	RECORD LENGTH: 6000 Hz
DRUM: 112	AMPLITUDE: 17
SAMPLE RATE: 1200 Hz	WEATHERING VEL: 2500-3000 m/sec
RECORD LENGTH: 1000 Hz	DATUM PLANE: 400 m
FILTER: 15 Hz	DATE: JANUARY 1978
ALIASING FILTER: 1200% DBS-TVF	
SUBSURFACE COVERAGE: 1200% DBS-TVF	
DATE: JANUARY 1978	

FIELD DATA	SKETCH
SPREAD CONFIGURATION: 15 - 2865	SPREAD SKETCH
ENERGY SOURCE: DYNAMITE	
AVERAGE CHARGE SHOT: 10 kg	
AVERAGE SHOT DEPTH: 23 m	
GEOPHONE PATTERN: 30 m	
GROUP INTERVAL: 25 m	
GEOPHONES/GROUP: 14.00	

PROCESSING
TRANSCRIPTION: 8 RESIDUAL STATICS
EDIT-DEMULTIPLEX ONLY OUTPUT: 8 COMMON DEPTH POINT METHOD
EDIT-GAINED OUTPUT: 8 COMMON OFFSET METHOD
EDIT-GEOPHONE AMPLITUDE OUTPUT: 8 COMMON SHOT METHOD
8 COMMON RECEIVER METHOD
CORRELATION: 8 STACK
3 PREPROCESSOR: 8 WEIGHTED STACK
8 COHERENCY STACK
STATIC CORRECTIONS: 8 ISOVEL
BEFORE NMO: 8 RADIAL PREDICTIVE FILTER
AFTER NMO: 8 MULTICHANNEL FILTER
DYNAMIC CORRECTIONS: 8 PREFILTER
STRAIGHT RAY (PRELIMINARY): 8 TV FILTER
CURVED RAY (FINAL): 8
YES PRELIMINARY STACK: 8
YES 100% CORRECTED: 8
100% SELECTED TRACES: 8
MINI SECTION: 8
5 VELOCITY ANALYSIS: 8 PREDICTION DISTANCE OPERATOR LENGTH IN WINDOWS
PREDICTIVE TIME DOMAIN DECON: 24
BEFORE STACK: 3
AFTER STACK: 3
10 TVF: 8
8 TV FILTER: 8
8 MUTE: 8
8 TIME BREAK ON SECTION: 8



PERMESSO DI RICERCA AVIGLIANO RELAZIONE FINALE



101

113

125

137

149

161

173

185

197

209

221

233

245

257

269

281

293

305

317

329

341

353

365

377

389

401

413

425

437

442

0.0

0.5

1.0

1.5

2.0

2.5

3.0

3.5

4.0

4.5

5.0

5.5

6.0

0.0

0.5

1.0

1.5

2.0

2.5

3.0

3.5

4.0

4.5

5.0

5.5

6.0