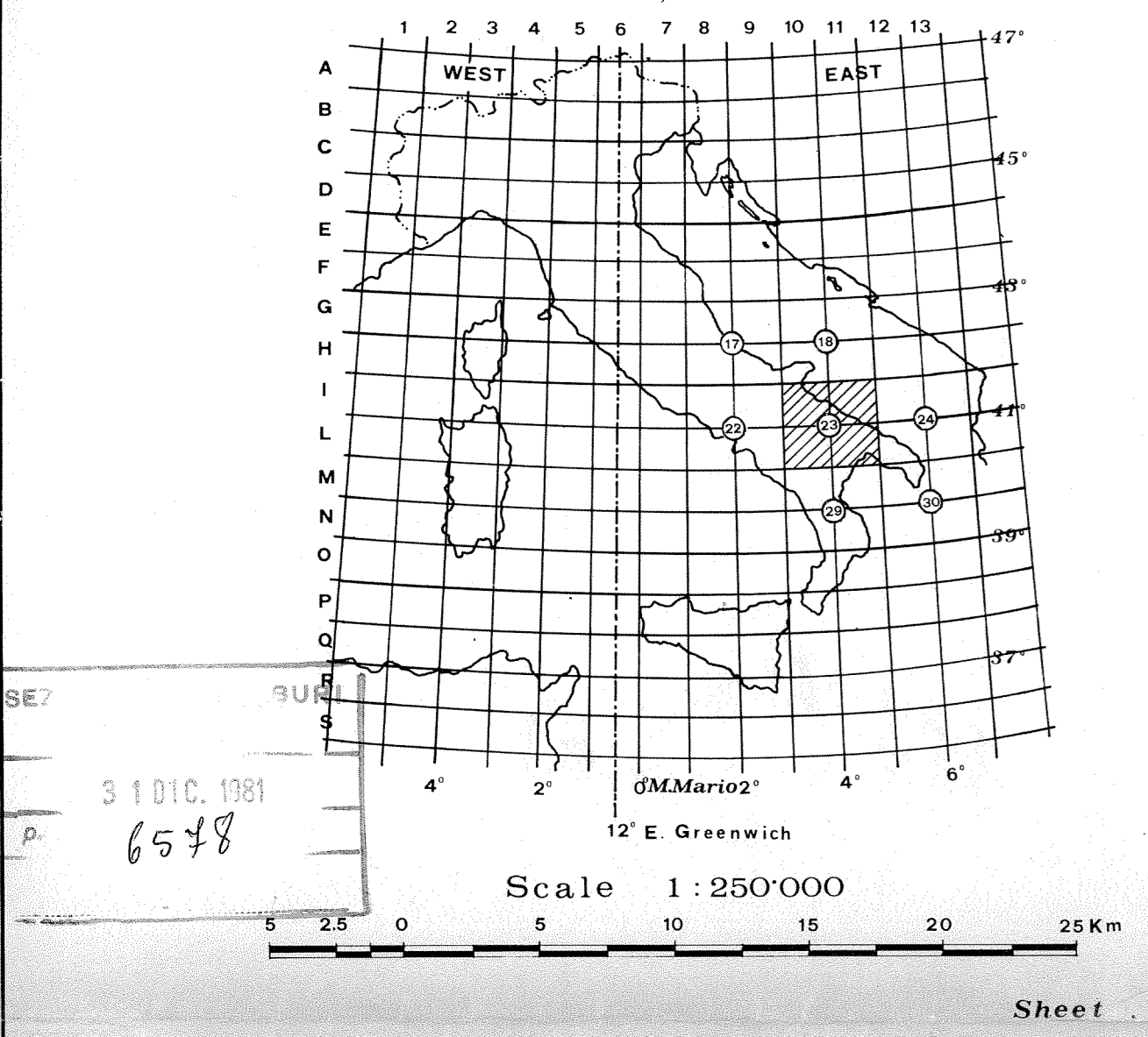


ITALY

APULIA PROJECT

AEROMAGNETIC SURVEY

RESIDUAL FIELD INTENSITY CONTOUR MAP



LEGEND

— Contour interval 50 gammas

— Contour interval 5 gammas

Survey and compilation by C.G.G.-1977
Interpretation by AGIP S.p.A.-1979-80

PROJECTION GAUSS-BOAGA
Longitude of origin: 15° East of Greenwich F.E. 2 520 Km
Latitude of origin: Equator: 0° FN 0.00 Km

FLIGHT GRID

Line spacing 5 Km

Tie line spacing 7.5 Km

Flight altitude above sea level 4 800'

Flight line with fiducial mark

