

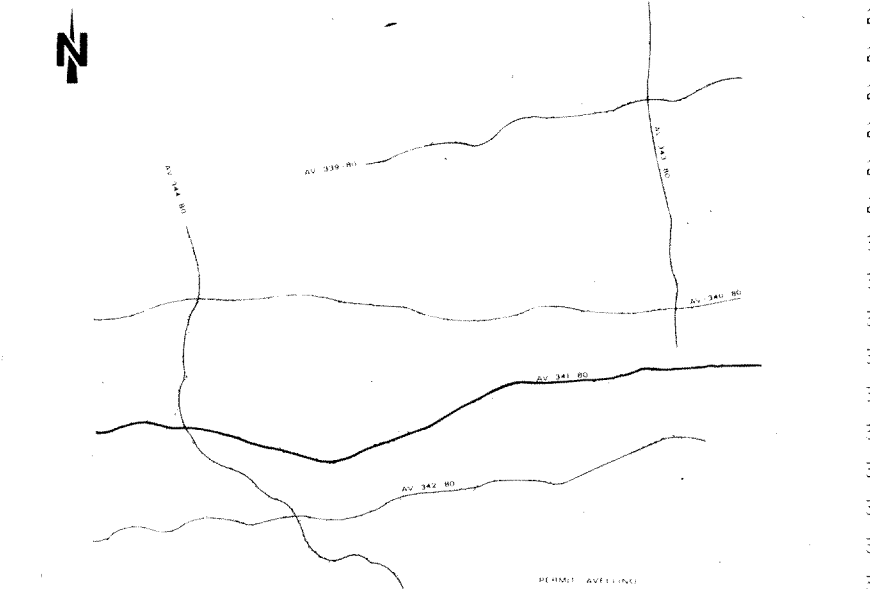


HYDROCARBON EXPLORATION  
GEOPHYSICAL EXP. CENTRE

CROOKED PROFILE		DIS. N°
ALLEGATO	DATA	493/3
2	LUC. 82	

RECORDING	DATA	PLAYBACK	DATA
CONTRACTOR	605 EUROPE DATUM PLANE		400 M. SW.
PARTY NO.	605 V. VERTICAL SCALE		1 SEC. - 9 CM.
MAGNETIC RECORDER	605 BUS-HOOD 4700 HORIZONTAL SCALE		1 CM. - 4 CM.
SAMPLE RATE	2 MS. PREPROCESSING REEL		3074-7742
RECORD LENGTH	6 SEC. STACK REEL		10001
FILTER L.C.	10 HZ. PREVIOUS PROCESSING		
ALIASING FILTER	106.7 HZ. DATE		NOVEMBER, 1980
DATE	JULY, 1980		
SPREAD CONFIGURATION	1900-20-0-20-1900 W.		
TRACE / S.P.	96		

PROCESSING	
EDIT F.P. (GEOPHONE AMPLITUDE)	
PREFILTER (10 HZ 2400 65HZ 4800)	
PREPROCESSOR (CROOKED COMPUTATION)	
VELOCITY ANALYSIS	
AUT. STATICS (WISER-CROSS DIP COMPUT.)	
STACK 1200 X	
T.V. EQUALIZATION	
T.V. FILTER	



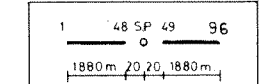
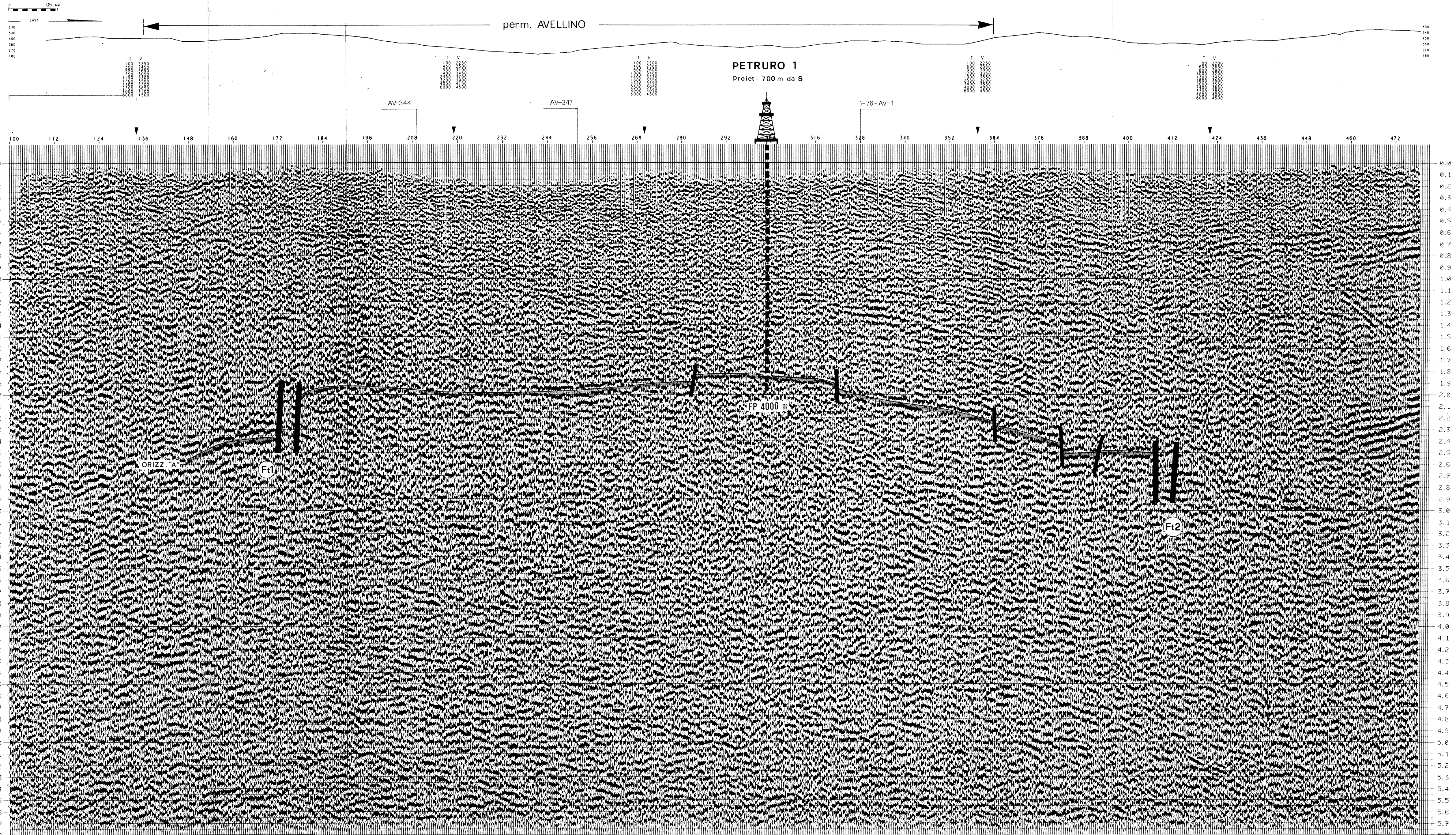
PROCESSED BY: *[Signature]*  
CONTROLLED BY: *[Signature]*

SEZIONE IDROCARBURI  
DI NAPOLI

- 7 AGO. 1982

Sez. 3759

Sez. Peiz.



TVF PARAMETERS	
UPPER ZONE	14HZ 2400 50HZ 4800
MIDDLE ZONE	12HZ 2400 45HZ 4800
LOWER ZONE	8HZ 2400 35HZ 4800

POLARITY CONVENTION  
COMPRESSIONAL WAVES - WHITE ON SECTION