

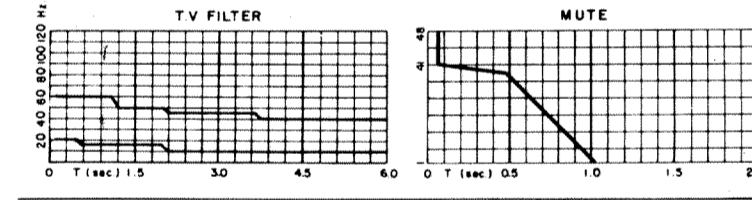
A6845

LINE MT-307-77-HR S.P. 243 S.P. 774

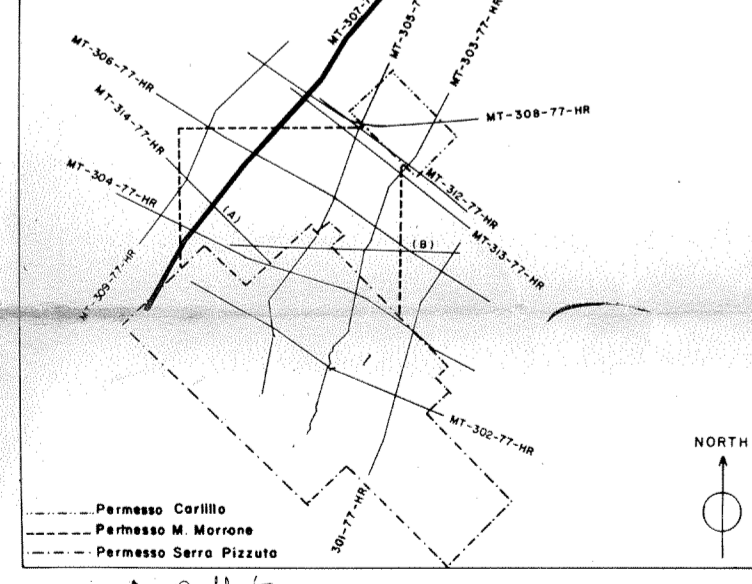
600% DBS-TV REFERENCE 2122227

<b>Agip</b>		AREA ITALIA_ZONA 4	WESTERN
ATTIVITA' SISMICA		PROSPECT CARILLO-M. MORONE	RILEVAMENTO
RECORDING DATA		PLAYBACK DATA	
SHOT BY: FRANKA	RECORD LENGTH: 3000 m.	SAMPLE RATE: 2000 Hz	RECORD LENGTH: 3000 m.
MAGNETIC RECORDER: 873	AMPLITUDE VEL: 1000 mV	SURVEILLING VEL: 2000 mV	RECORD LENGTH: 3000 m.
RECORD LENGTH: 3000 m.	SCALE: 1 cm = 100 m	SCALE: 1 cm = 100 m	RECORD LENGTH: 3000 m.
ALIASING FILTER: 1800 Hz	PREPROCESSOR REEL No: 84378	DATE: DECEMBER 1977	DATE: DECEMBER 1977
FIELD DATA		SKETCH	
SPREAD CONFIGURATION		SPREAD CONFIGURATION	
ENERGY SOURCE: SIMIC 2		ENERGY SOURCE: SIMIC 2	
SHOT HOLES / SP		SHOT HOLES / SP	
AVERAGE CHARGE / SHOT		AVERAGE CHARGE / SHOT	
AVERAGE SHOT / DEPTH		AVERAGE SHOT / DEPTH	
GEOPHONE PATTERN		GEOPHONE PATTERN	
GROUP INTERVAL		GROUP INTERVAL	
GEOPHONES / GROUP		GEOPHONES / GROUP	
GEOPHONE FREQUENCY		GEOPHONE FREQUENCY	

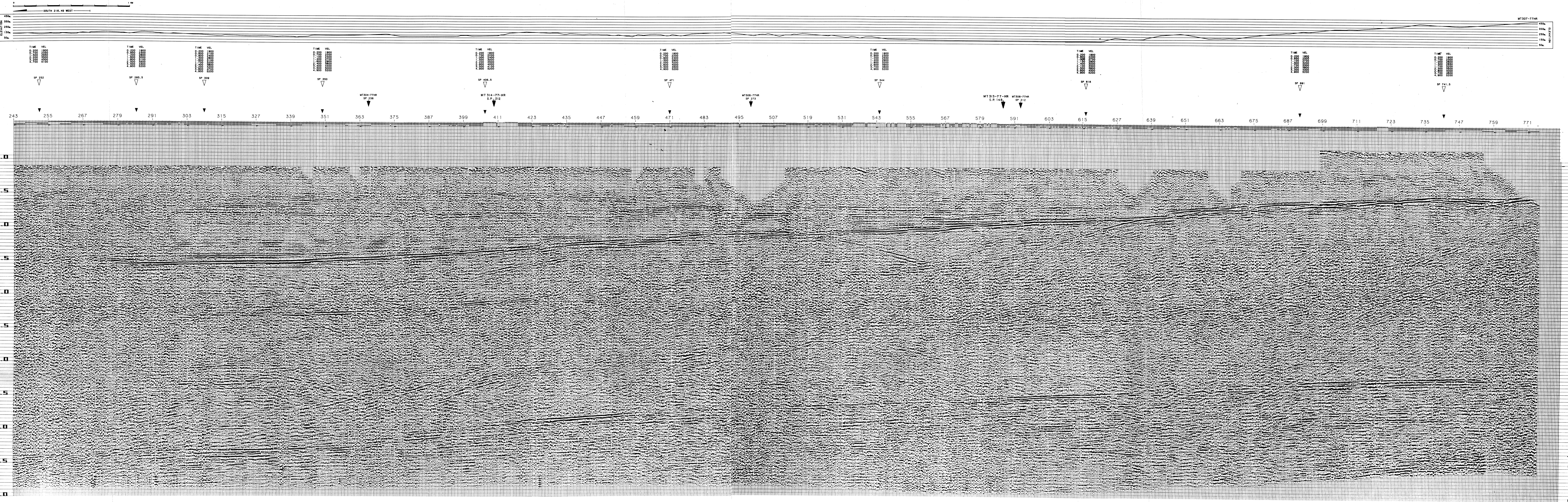
TRANSCRIPTION		RESIDUAL STATICS	
EDIT - MULTIPLE ONLY OUTPUT	COMMON DEPTH POINT METHOD	EDIT - GAINED OUTPUT	COMMON OFFSET METHOD
EDIT - GEOPHONE AMPLITUDE OUTPUT	COMMON SHOT METHOD	EDIT - GEOPHONE AMPLITUDE OUTPUT	COMMON RECEIVER METHOD
CORRELATION		MANUAL	
PREPROCESSOR		STACK	
STATIC CORRECTIONS	BEFORE NMO	WEIGHTED STACK	COHERENCY STACK
AFTER NMO	3 PREFILTER 16-124	SPECIAL GAIN ROUTINE	FREQUENCY FILTER
DYNAMIC CORRECTIONS	STRAIGHT RAY	MULTICHANNEL FILTER	RADIAL PREDICTIVE FILTER
CURVED RAY	PRELIMINARY STACK	CONTINUOUS VELOCITY ANALYSIS	
100% CORRECTED	100% SELECTED TRACES	TRACE SEG.	
VELOCITY ANALYSIS		PREDICTIVE TIME DOMAIN DECON	
BEFORE STACK	AFTER STACK	PREDICTION DESIGN OPERATOR LENGTH IN WINDOWS	



VELOCITY FUNCTION CHANGE INTERSECTION VELOCITY ANALYSIS LOCATION



ANALYST: G. B. B. 42-12-77



MT307-77HR

5.0