

LINE: POR-6 V DBS. 1200 %
 V.P. 5042 V.P. 815
 Allegato 2 DBS Data MARZO 1986 Disegno n° 2410 / 3



AGIP AREA PORDENONE WESTERN
 DIREZIONE MINERARIA PROSPECT ENI VALPADANA

RECORDING DATA		PLAYBACK DATA	
SHOT BY	WESTERN	SIX REEL NUMBER	8236
PARTY	F-57	SAMPLE RATE	3000
MAGNETIC RECORDER	SDS 1010	N. SAMPLE TRACE	3000
DATA N.	BINARY	E & V	OFF
SAMPLE RATE	4 m/s	MASTER GAIN	5
RECORD LENGTH	22500 m/s	AMPLITUDE	ATT. 2 B 5
FILTER	HI	WEATHERING VEL	600 m/sec
ALIASING FILTER	625 Hz	SUBWEATHERING VEL	2500 m/sec
SUBSURFACE COVERAGE	1200%	DATUM PLANE	SEA LEVEL
DATE	OCT 28 - NOV 13	SOURCE VERTICAL	1541.95 m
		SOURCE HORIZONTAL	4.99 km
		DATE	JANUARY 10, 72

FIELD DATA		SKETCH	
SPREAD CONFIGURATION	595 - 2550 m	VP	29
GROUPS INTERVAL	95 m		
GEOPHONES / GROUP	60 No		
GEOPHONES / FREQUENCY	EV-228.75 Hz		

SHOT HOLES S.P.	
AVERAGE CHARGE / SHOT	
AVERAGE SHOT DEPTH	
SWEEP 45 → 9 HZ	
SWEEP LENGTH 16 SECONDS	
VIBROSEIS 4 VIBRATORS	
12 SWEEPS/VP	
PATTERN LENGTH = 85m	

PROCESSING DATA	
MUTE	TRACES TIME
NORMAL SPREAD	1 0.300 sec
	4 0.300 sec
	5 0.700 sec
	24 1.800 sec

VELOCITY ANALYSIS	
POR-6V VP 517	SEE HEADER INDICATION
571	(LINEAR INTERPOLATION
636	BETWEEN MARKED POINTS)
689	
795	

TRANSCRIPTION A/B	
EDIT FIXED GAIN & CORRELATION	
EDIT GAIN RECOVERY	
EDIT BG RECOVERY	
EDIT SUP. BG	

100% ALL POINTS	
100% SHORT TRACES ONLY (MISSECTION)	
100% SELECTED TRACES	
COPIE COMMON DEPTH POINT FAMILY	
COPIE COMMON DISTANCE FAMILY	

STATICS BEFORE NMO	
STATICS AFTER NMO	
NMO STRAIGHT RAY	
NMO CURVED RAY	
RESIDUAL STATICS	
RESIDUAL NMO	

VELOCITY ANALYSIS - AVAL 6 operations	517-571-636-684-706-795
NMO EXPANSION	

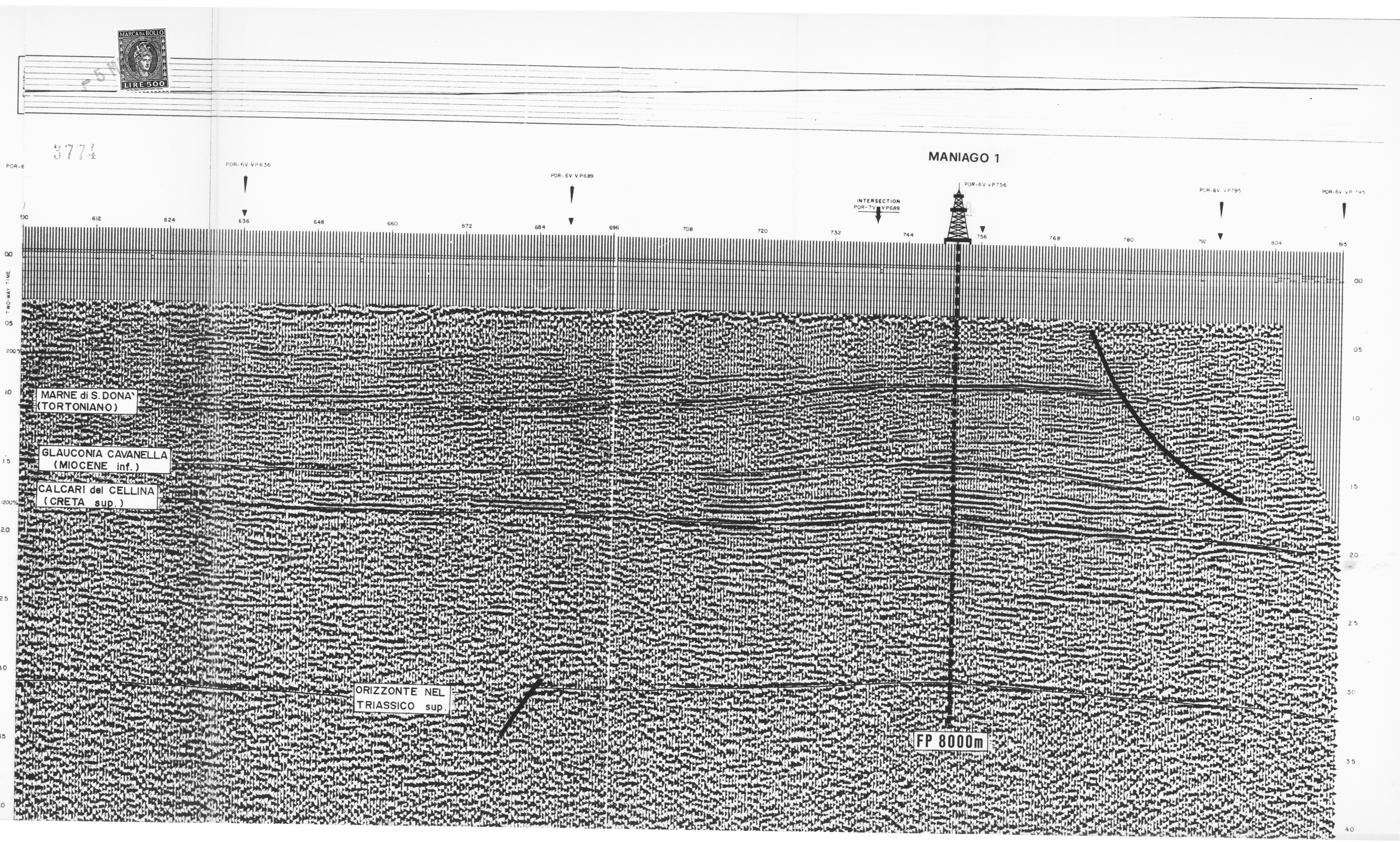
PRELIMINARY STACK	
OPTIMUM STACK (AUTO STACK ON COPIE)	
FINAL STACK	

TY DECON INVERSE FILTER BEFORE STACK	PREDICTION TIME	OP. LENGTH	ms
TY DECON INVERSE FILTER AFTER STACK	44ms-160ms	160ms	
TY DECON PREDICTIVE BEFORE STACK			
TY DECON PREDICTIVE AFTER STACK			

FILTER ANALYSIS	
TY FILTER DIGITAL	

ANALOG FILTER	
NOTCH FILTER	
PRE-FILTER	

MERGE	
SMOOTHING	
DIGITAL COMPOSITION	
ANALOG COMPOSITION	
ENERGY LOG	
SPECIAL MUTE	
LOWER SPECTRUM	



CS 4289 LINE POR-6V V.P. 5042 V.P. 815 1200% DBS