

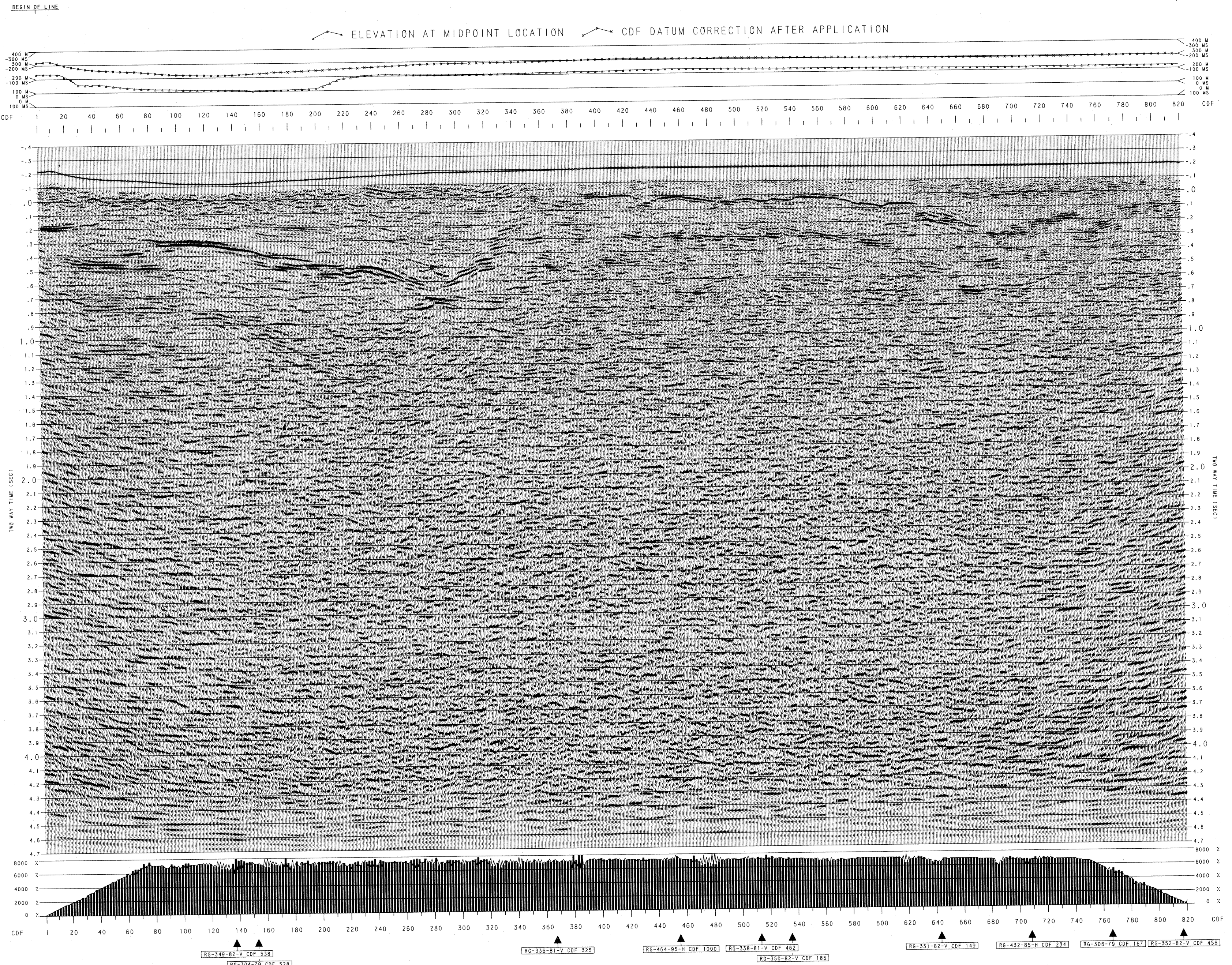
LINE : RG-468-95-H


CDF : 1 - 820

TIME MIGRATION 7200%

SOUTH-EAST
SHOOTING DIRECTION

CDF 46	CDF 103	CDF 141	CDF 184	CDF 241	CDF 292	CDF 346	CDF 410	CDF 480	CDF 550	CDF 620	CDF 693	CDF 765
TIME STATION VEL	TIME STATION VEL	TIME STATION VEL	TIME STATION VEL	TIME STATION VEL	TIME STATION VEL	TIME STATION VEL	TIME STATION VEL	TIME STATION VEL	TIME STATION VEL	TIME STATION VEL	TIME STATION VEL	TIME STATION VEL
0.1 1953	0.1 1953	0.1 1953	0.1 1953	0.1 1953	0.1 1953	0.1 1953	0.1 1953	0.1 1953	0.1 1953	0.1 1953	0.1 1953	0.1 1953





AREA : SICILIA
PROSPECT : ACATE
LINE : RG-468-95-H

RECORDING DATA	PROCESSING SEQUENCE
RECORDING DATA RECORDING DATE: NOVEMBER 1995 RECORDING PARAMETERS CONTRACTOR: GEOPHYSICAL... PART: ... TAPE FORMAT: SEG-D, MULTIPLE... RECORD LENGTH: ... FILTER: ... NOTCH FILTER: ... SAMPLING INTERVAL: ... COVERAGE: ... DATUM PLANE: ... VEL.: USED FOR STAT. CORR.: ... SOURCE ENERGY SOURCE: ... SOURCE CHARGE: ... SOURCE DEPTH: ... SHOT INTERVAL: ... SPREAD TYPE: ... CONFIG: ... NUMBER OF GROUPS: ... GROUP INTERVAL: ... SHOOTING DIRECTION: ... SPREAD DIAGRAM 1775 M ... GEOPHONE PATTERN 24 M ... SOURCE PATTERN DYNAMITE ... PATTERN 1 ... PATTERN 2 ... PATTERN 3 ... HYDRAPULSE ... SCALES HORIZONTAL: ... VERTICAL: ... LEGEND X DATUM CORRECTION ... O INTERSECTION ... V VELOCITY ANALYSIS ... W WELL LOCATION ... COMMENTS MIN. PHASE STACK ... FINAL STACK ... FINAL MIGRATION ... PLAYBACK PLOTTER: ... PRESENTATION: ... BASELINE DEVIATION: ... CONSTANT GAIN FACTOR: ... DENSITY/INTENSITY: ... POLARITY CONVENTION RECORDING: ... PROCESSING: ... DISPLAY: ... DATUM PLANE PROCESSED BY: ... CONTROLLED BY: ...	PROCESSING SEQUENCE DATE CONVERSION SEG-D TO SEG-D CONVERSION RAW TRACKS EDITING GEOMETRY AND FIELD STATISTICS UPDATE SORTING TO CDF GATHER SOURCE PULSE IDENTIFICATION CDF DATUM CORRECTION APPLICATION PRE-STACK FILTERING INSTRUMENT AND GEOPHONE RESPONSE CONVERTED TO W WINDO WAVE RESAMPLING TIME SAMPLING TO 4 MS DECONVOLUTION WIND 0.0 5.0 5.0 ... MULTIPLY DEARTH RECOVERY STATISTICALLY COMPUTED FUNCTION APPLIED TO RECEIVER ENERGY LOSSES DECONVOLUTION TYPE: PREDICTIVE FILTER ... RESTORAL AMPLITUDE CORRECTION STATISTICALLY GAIN FUNCTION COMPUTED AND APPLIED TO COMMON OFFSET GATHERS TO RECOVER THE RESTORAL ENERGY LOSSES MULTICHANNEL FILTER SHOT DURATION: ... FILTER LENGTH: ... WINDOW TYPE: ... ARRAT STIMULATION DIFFERENTIALLY WIND APPLIED S:R 0.1-1.5 5 W:R 1.5-3.0 5 0.15 / 0.70 / 0.15 W:R 3.0-5.0 5 0.10 / 0.80 / 0.10 SURFACE CONSISTENT RESTORAL STATISTICS MAX CORRELATION SHIFT: ... CORRELATION WINDOW: ... VELOCITY ANALYSIS PERFORMED ON CDF GATHER WITH VARIABLE PARAMETERS ON INTERACTIVE WORKSTATION SURFACE CONSISTENT RESTORAL STATISTICS MAX CORRELATION SHIFT: ... CORRELATION WINDOW: ... SINGLE TRACK MULTICHANNEL FILTER PREDICTIVE FILTER APPLIED ON AND CORRECTED SHOT GATHER PLANES TRACKS WIND 0.0-1.5 5 SEC ... COHERENCY STACK CDF ORDERED DATA AND CORRECTED WITH TIME AND GAIN LOSSES MULT. REPEATED SIGNALS SYNCHRONIZED DATA TRACKS STRECHED TO COMMON MAX CORRELATION SHIFT: ... NUMBER OF CORRELATION WINDOWS: ... DECK PHASE CONVERSION OPERATOR COMPUTED STATISTICALLY ON STACKED DATA TIME MIGRATION FINITE DIFFERENCE IMPLICIT ALGORITHM IN CASSE TIME VARIANT FILTER WIND 0.0-1.5 5 SEC ... MULTICHANNEL FILTER PREDICTIVE FILTER APPLIED ON AND CORRECTED SHOT GATHER PLANES TRACKS WIND 0.0-1.5 5 SEC ... SCALEING OUTPUT RMS LEVEL: ... GAIN WINDOWS: ...

STATION MAP

