

Party: 127.11.32 **UNITED CANSO OIL and GAS Ltd**

OFFSHORE NORTH SICILY  
d1 CP.UC

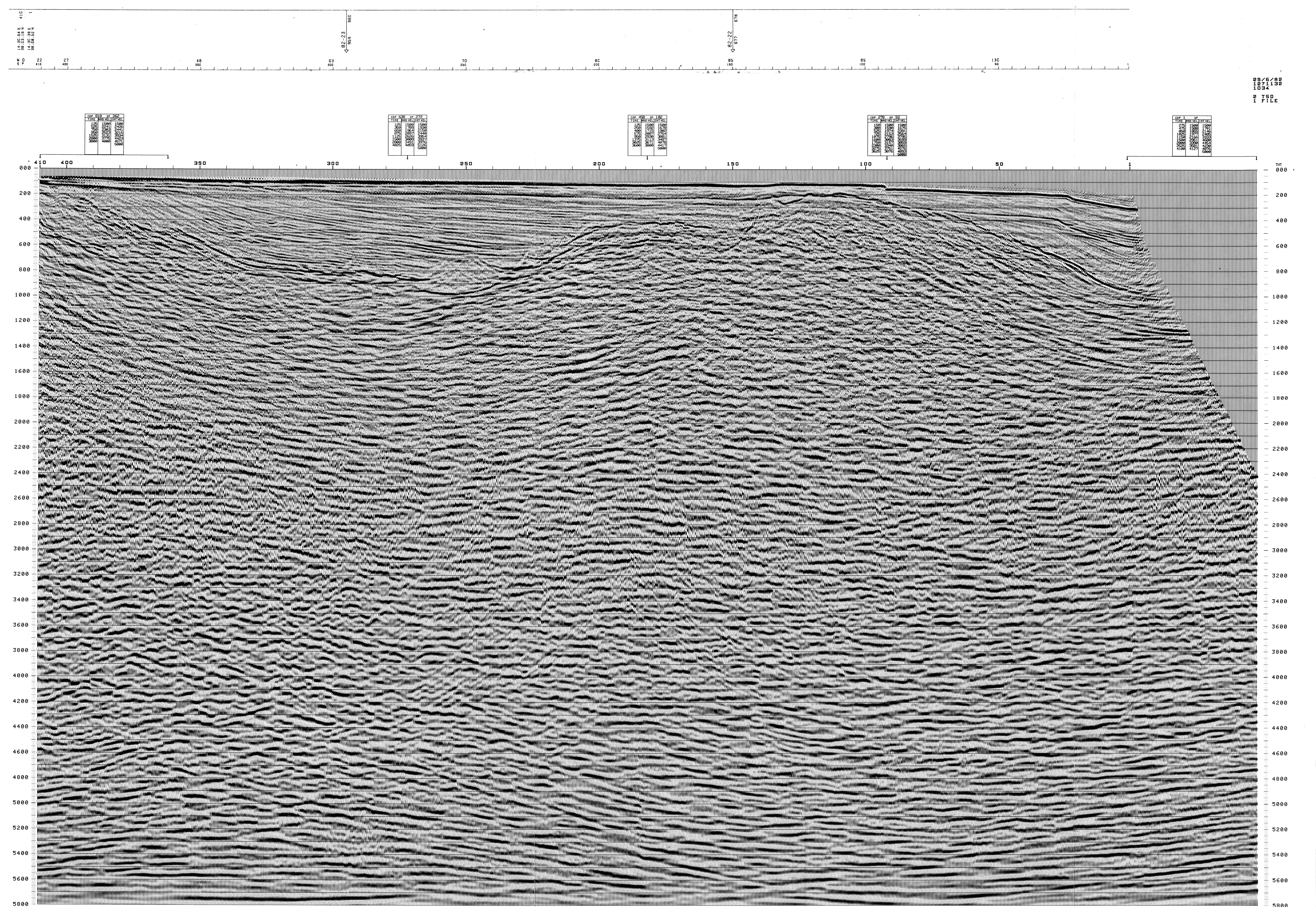
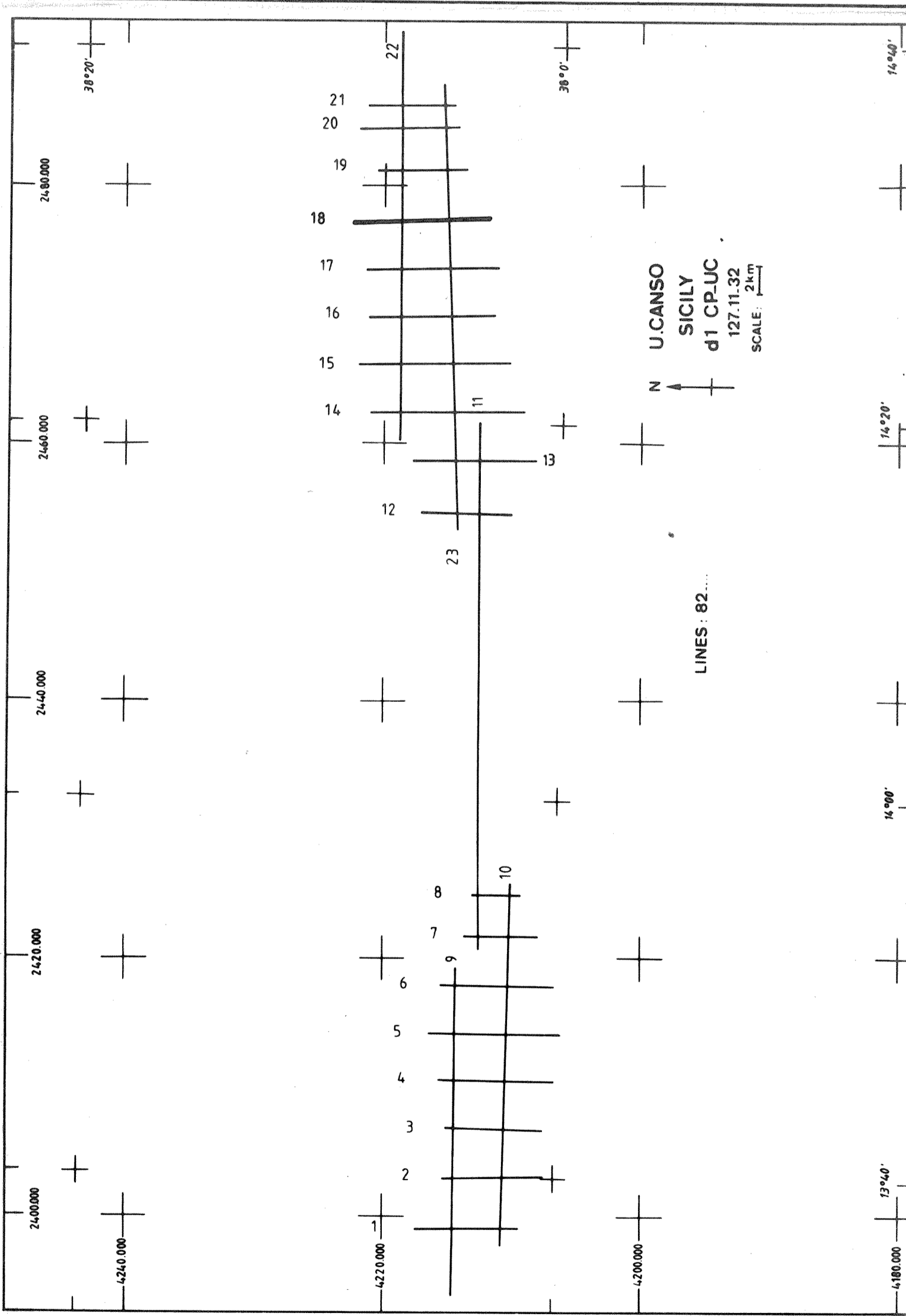
S410 **LINE 82.18** 1 N

BOAT MOTION ←  
**MIGRATION IN TIME**

PL N° 22 M **STACK 4800%. DBS.TVF** APR 27 82  
JUNE 28 82

<p>FIELD RECORDING 4800 % Contractor C.G.G.</p> <p>SHIP</p> <p>POLAR BIORN</p> <p>NAVIGATION BY SYLDEIS</p> <p>SHOOTING DATE 18 10 82</p> <p>INSTRUMENTS</p> <p>SN 338</p> <p>FORMAT 9 tracks 1600 BPI</p> <p>FILTER 8125 Hz</p> <p>SAMPLING 2 ms</p> <p>SOURCE</p> <p>VAPORCHOC 5.70 m</p> <p>DEPTH 2000 m</p> <p>CAPACITY 2 monopole PV 80 valves</p> <p>SP INTERVAL 25 m</p> <p>STREAMER</p> <p>LENGTH 2400 m</p> <p>DEPTH 12 m</p> <p>GROUPS 96</p> <p>GROUP INTERVAL 25 m</p> <p>GEOPHONES HC 202</p>	<p>DIGITAL PROCESSING P5 Sequence in 2 ms</p> <p>DEMULTIPLEX EDIT</p> <p>SPHERICAL TIME RENEWAL COMPENSATION</p> <p>WAPCO (Stabilization of Vaporchoc signal)</p> <p>MUTES</p> <p>SPIKE DECONVOLUTION</p> <p>Operator Length 280 ms Prewhitening 5</p> <p>Windows 200 1600 ms</p> <p>1500 4000 ms</p> <p>VELOCITY ANALYSIS</p> <p>CDP GATHER (Reversed polarity)</p> <p>STATIC CORRECTIONS - 12 ms</p> <p>NMO CORRECTIONS (Linear interpolation between velocity functions)</p> <p>STACK 4800 %</p> <p>MIGRATION IN TIME (FK Domain)</p> <p>Migration velocities</p> <p>0 - 10000 ms = stack velocities + 100 %</p> <p>from 3000 ms = stack velocities + 400 %</p> <p>TIME VARIANT FILTER</p> <p>Leading by the Messemme discordance</p> <p>1.0 ms (Measurement discordance) 8.55 Hz</p> <p>1.2500 ms 1.6000 ms 8.25 Hz</p> <p>TRACE EQUALIZATION</p> <p>ANALOG DISPLAY</p> <p>POLARITY</p> <p>Compressions (negative number on field tape)</p> <p>White trough on display</p> <p>TIME ORIGIN SEA LEVEL</p> <p>Static corrections + 12 ms for source and streamer depth</p> <p>HORIZONTAL SCALE</p> <p>0.5 km</p> <p>80 Traces/km</p>
--	---

COMPAGNIE GENERALE DE GEOPHYSIQUE  
6, Rue Galvani - 91301 - MASSY - FRANCE



85/6/82  
1271132  
1034  
2 ISD  
1 FILE