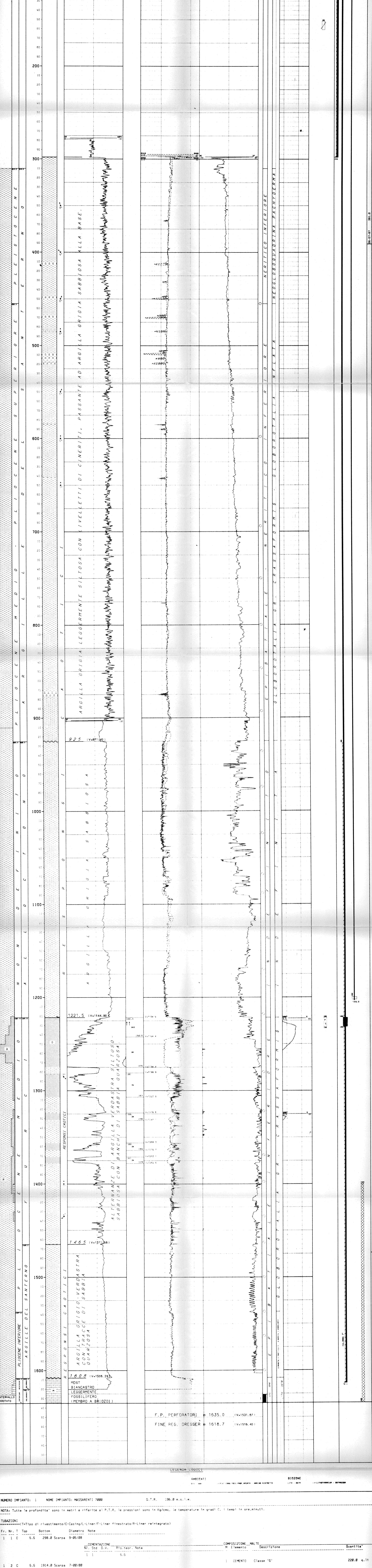


Table with 2 columns: 'ROCCHE E METANOFORIE' and 'ROCCHE CARBONATEE'. It lists various geological features and their corresponding symbols.

Table with 2 columns: 'STRUTTURE SEDIMENTARIE E DIAGENETICHE' and 'MINERALIZZAZIONE'. It details sedimentary structures and mineralization types.

Summary data including well name (MASSARENTI 7000), location (MARELLI), coordinates, and dates.



LEGENDA (Legend) defining symbols and abbreviations used in the well logs.

NUMERO IMPIANTO: 1. Note regarding well status and location.

NOTE: General notes regarding data accuracy and measurement methods.

Table with columns for Tubazioni (Tubing) and Composizione Manti (Casing Composition).

Table for Controlli Denimazione (Density Control) showing top and bottom measurements.

Table for Misure di Verticalita' (Verticality Measurements) with columns for Fr., Prof., Dev., etc.

Table for Duttilita' (Ductility) with columns for Fr., Top, Bottom, Comp., Tipo, Sr., etc.

Table for Carte di Fondo (Well Diagram) showing well number and location.

Table for Carte di Parete (Well Wall) showing various parameters like Fustelle, Voci, etc.

Table for Fango di Perforazione (Drilling Mud) showing density and other properties.

Table for Assorbimenti (Absorptions) and Manifestazioni di Interesse Minerario (Mineral Interest Manifestations).

Table for Gas (Gas) showing flow and production data.

Table for Operazioni di Well Logging (Well Logging Operations) with columns for Fr., No., D., etc.

Table for Risultati Loss di Produzione (Production Loss Results).

Table for Temperature dal Log (Temperature from Log) with columns for Fr., Prof., Prof. V., etc.

Table for Tappi (Plugs) showing type and location.

Table for Scazzings (Scazzings) and Bricce Plutee (Sludges).

Table for Prove di Strato (Stratigraphic Tests) and Prove di Produzione (Production Tests).

MR. 2 - Foro 1 da 1222.8 a 1222.8 Prova (Well 2 - Test from 1222.8 to 1222.8)

Table for VACUUM TESTS (Vacuum Tests) and MISURE DI PRODUZIONE (Production Measurements).

RESULTS OF ANALYSIS (Risultati delle Analisi) and VACUUM FORMATION TESTS (Vacuum Formation Tests).

Table for ANALISI CAMP GAS (CAMP GAS ANALYSIS) showing gas composition.

NOTE TECNICHE (Technical Notes) regarding test procedures and results.

FORO 1 - DA 1222.8 A 1222.8 (Well 1 - From 1222.8 to 1222.8).

RESULTS MINERALI (Mineral Results) section.

RESULTS GEOLOGICI (Geological Results) section.

Table for ANALISI CAMP GAS (CAMP GAS ANALYSIS) showing gas composition.

NOTE TECNICHE (Technical Notes) regarding test procedures and results.

FORO 1 - DA 1222.8 A 1222.8 (Well 1 - From 1222.8 to 1222.8).

RESULTS MINERALI (Mineral Results) section.

RESULTS GEOLOGICI (Geological Results) section.