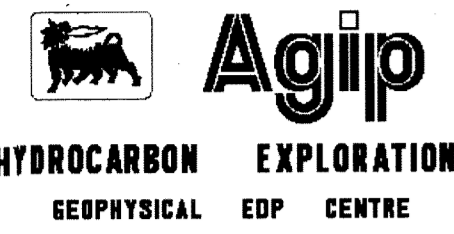
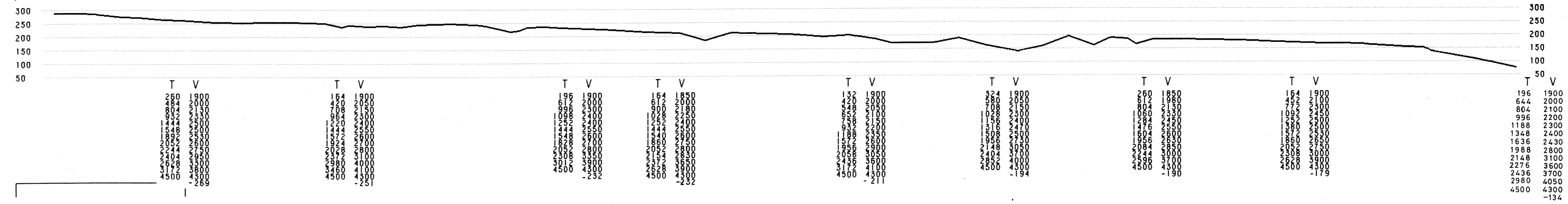
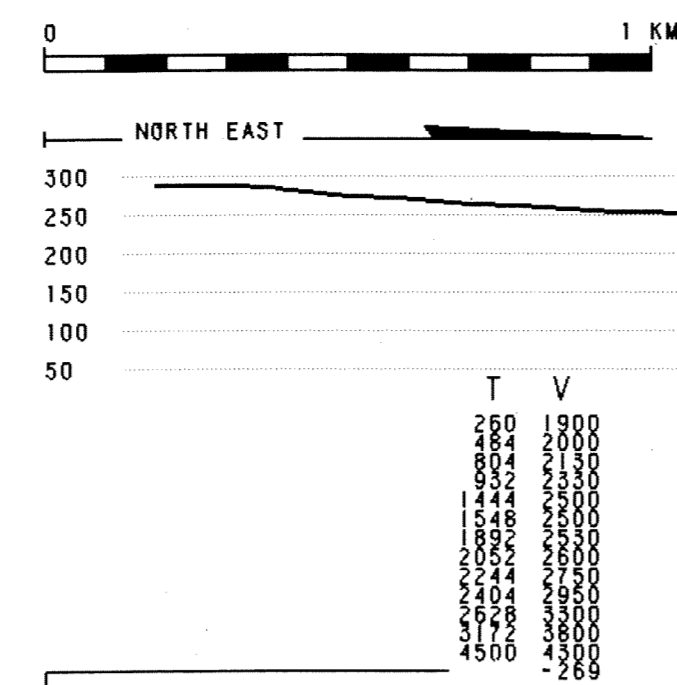


LINE CH395-81 1200% S.P. 112 S.P. 293

D.B.S. STACK
T.V.F.



AREA ITALIA ZONA 3
PROSPECT CRECCHIO



RECORDING	DATA	PLAYBACK	DATA
CONTRACTOR	GUS BUS	DATUM PLANE	SEA LEVEL
PARTY NO	6US-4	VERTICAL SCALE	1 SEC. = 10 CM.
MAGNETIC RECORDER	HDDR 4200	HORIZONTAL SCALE	1 KM. = 8 CM.
SAMPLE RATE	2 MS.	PREPROCESSING REEL	15329
RECORD LENGTH	7 SEC.	STACK REEL	3839
FILTER L.C.	15 HZ 24DB/OCT.	PREVIOUS PROCESSING	MARCH 1982
ALIASING FILTER	106 HZ	DATE	JANUARY 1984
DATE	NOVEMBER 1981		
SPREAD CONFIGURATION	1900-20/20-1900		
TRACE / S.P.	96		
GROUP / INTERVAL	40 M.		
GEOPHONES / GROUP	18/TRACE		
GEOPHONES / HZ	10 HZ		
ENERGY SOURCE	DYNAMITE		
SHOTPOINTS DISTANCE	160 M.		
AVG. SHOT DEPTH	30 M.		
CHARGE SHOT	2.-7KG.		
TOP DEL CRETA INF.(UNCONFORMITY)			

PROCESSING

SEZIONE IDROCARBURI	11A
13 GIU. 1985	
8482	

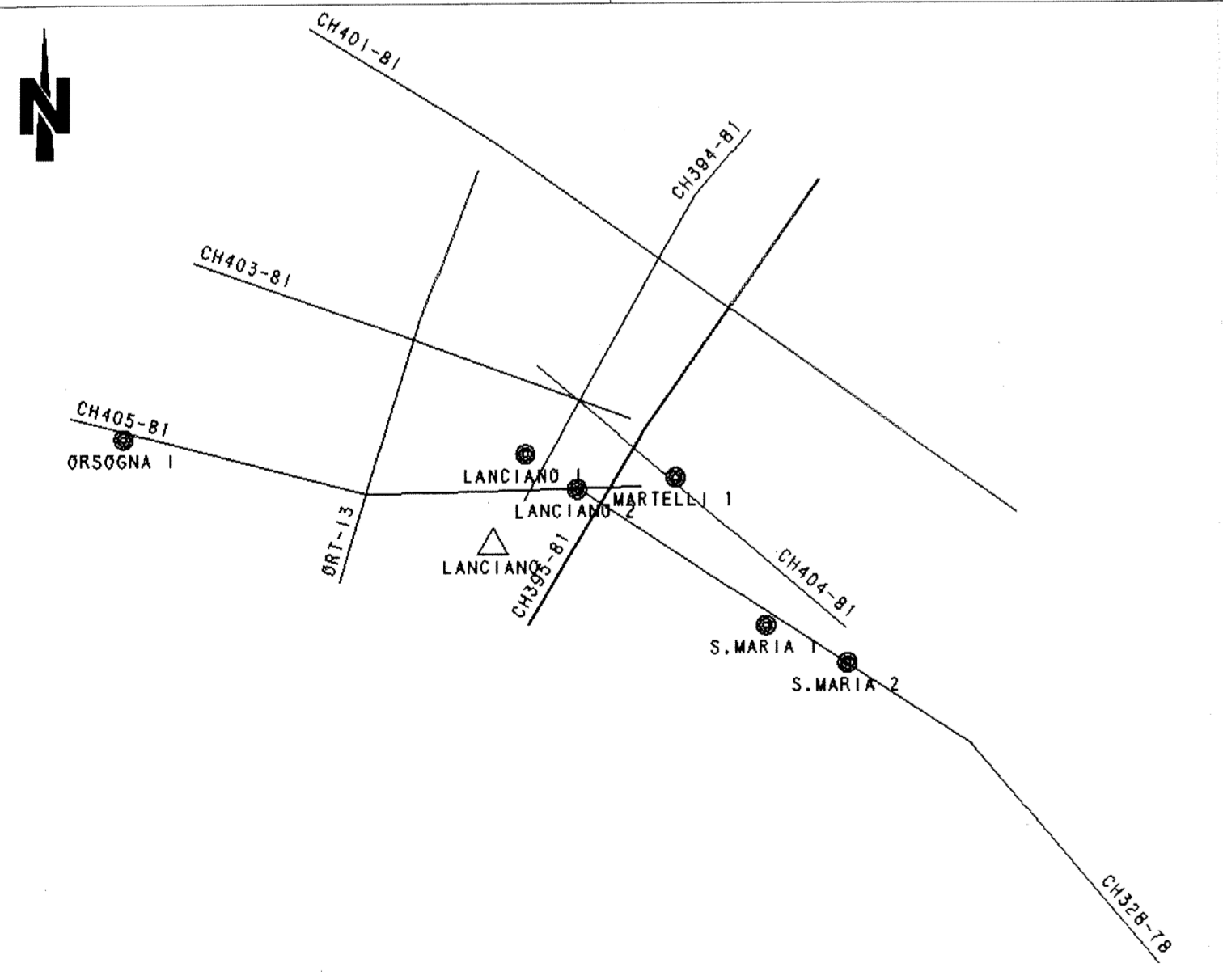
EDIT F.P. (GEOPHONE AMPLITUDE)
RESAMPLING 2 MS TO 4 MS
MINIMUM PHASE DEPHASING
NOISE TRAIN SUPPRESSION
PREPROCESSOR CMP GATHER
D.B.S. MIN. PHASE INV. FILTER 4-200 MS.
FIELD STATIC CORRECTIONS
PRELIM. SURF. CONSIST. RESID. STATICS
VELOCITY ANALYSIS
DYNAMIC CORRECTIONS
SURFACE CONSISTENT RESIDUAL STATICS
STACK 1200%
BILATERAL MIX 15-75-15
MIN. TO ZERO PHASE WAVELET PROCESSING
T.V. FILTER

T.V.F. PARAMETERS

100 MS	14HZ 24DB	70HZ 48DB
1500 MS	12HZ 24DB	70HZ 48DB
2000 MS	10HZ 24DB	70HZ 48DB
3000 MS	8HZ 24DB	50HZ 48DB
4000 MS	8HZ 24DB	40HZ 48DB

POLARITY CONVENTION

COMPRESSONAL WAVES - WHITE ON SECTION



PROCESSED BY E. LOINGER-E. STOLF
CONTROLLED BY A. ZECCHINI

