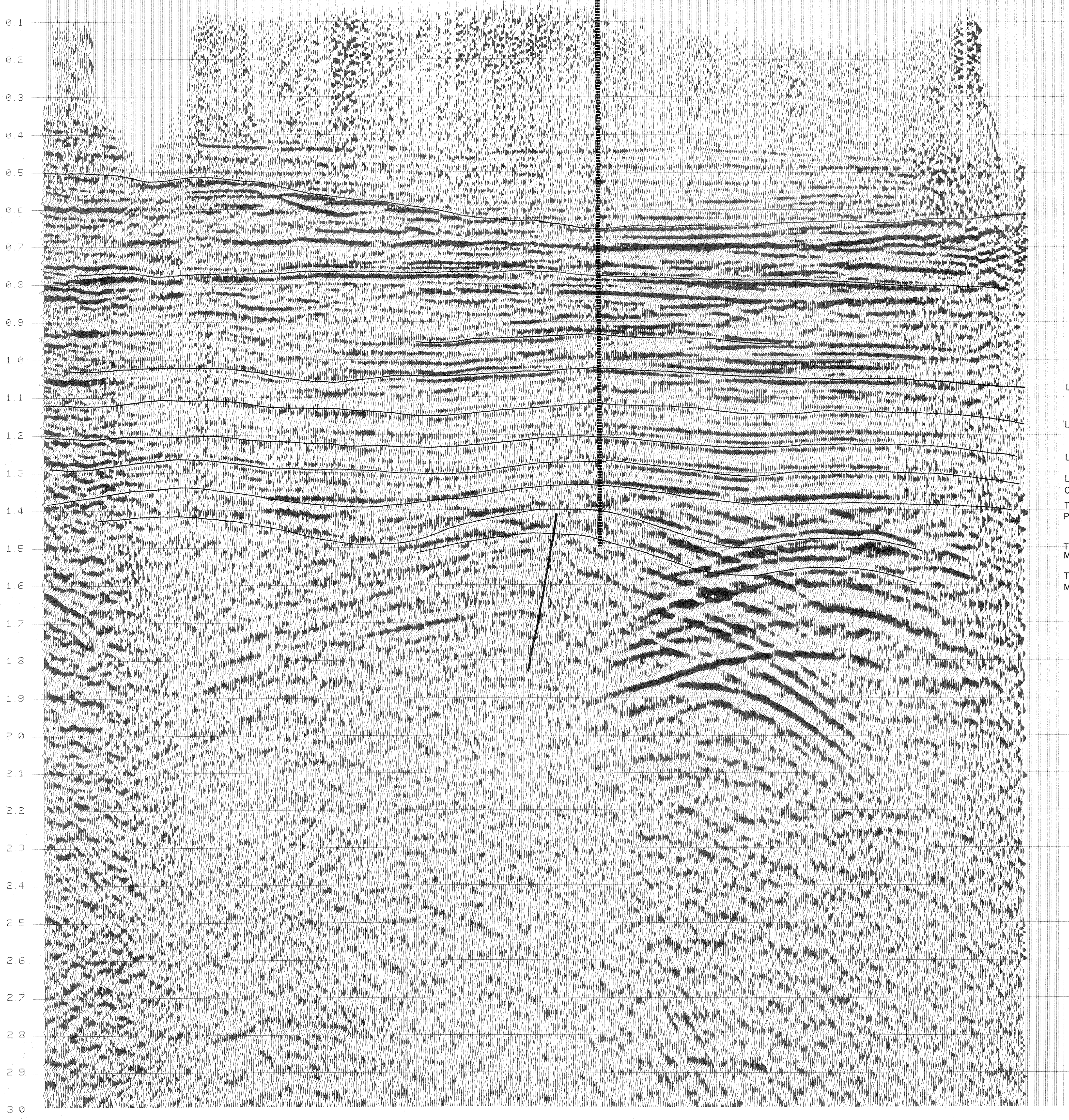
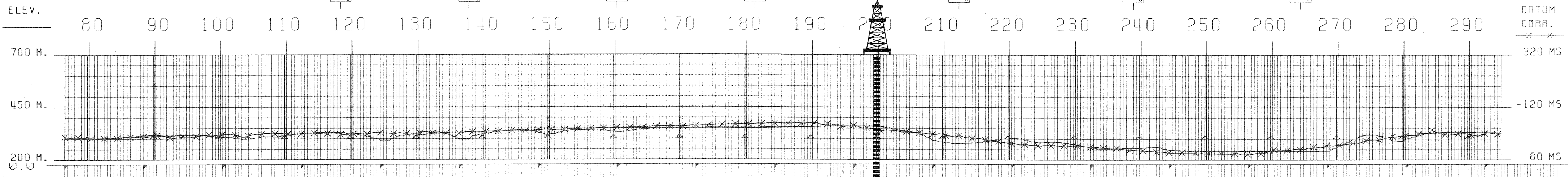


LINEA SISMICA PZF-18-85

SP 118.00	SP 137.50	SP 150.00	SP 181.00	SP 212.00	SP 238.50	SP 264.00
TIME RMS VEL. DIZ INT.	TIME RMS VEL. DIZ INT.	TIME RMS VEL. DIZ INT.	TIME RMS VEL. DIZ INT.	TIME RMS VEL. DIZ INT.	TIME RMS VEL. DIZ INT.	TIME RMS VEL. DIZ INT.
0.10 1820 1820	0.09 1840 1840	2.15 1820 1820	2.10 1840 1840	0.10 1800 1800	0.10 1800 1800	0.10 1810 1810
0.14 1890 1890	0.20 1900 1900	2.15 1820 1820	2.10 1840 1840	0.16 1810 1810	0.16 1810 1810	0.16 1810 1810
0.45 2080 2080	0.45 2090 2090	2.15 1820 1820	2.10 1840 1840	0.48 2090 2090	0.48 2090 2090	0.41 2090 2090
0.55 2150 2150	0.55 2160 2160	2.15 1820 1820	2.10 1840 1840	0.52 2110 2110	0.52 2110 2110	0.50 2200 2200
0.71 2220 2220	0.70 2230 2230	2.15 1820 1820	2.10 1840 1840	0.76 2230 2230	0.76 2230 2230	0.79 2410 2410
0.79 2400 2400	0.90 2490 2490	2.15 1820 1820	2.10 1840 1840	1.16 2690 2690	1.16 2690 2690	0.94 2510 2510
0.98 2500 2500	1.12 2590 2590	2.15 1820 1820	2.10 1840 1840	1.16 2690 2690	1.16 2690 2690	1.18 2690 2690
1.05 2600 2600	1.45 2690 2690	2.15 1820 1820	2.10 1840 1840	1.37 2850 2850	1.37 2850 2850	1.33 2690 2690
1.30 2750 2750	1.80 2840 2840	2.15 1820 1820	2.10 1840 1840	1.44 2940 2940	1.44 2940 2940	1.44 2860 2860
1.80 3310 3310	5.00 3900 3900	2.15 1820 1820	2.10 1840 1840	1.54 3010 3010	1.54 3010 3010	1.56 3090 3090
5.00 3930 3930	6.01 4100 4100	2.15 1820 1820	2.10 1840 1840	1.74 3260 3260	1.81 3230 3230	1.81 3230 3230
6.00 4100 4100		2.15 1820 1820	2.10 1840 1840	5.00 3940 3940	5.00 3930 3930	5.00 3930 3930
		2.15 1820 1820	2.10 1840 1840	6.01 4100 4100	6.01 4100 4100	6.01 4100 4100

PZF-23-85 ST 147  
 PZF-13-85 ST 169.5  
 PZF-14-85 ST 186  
 PZF-15-85 ST 196  
 PZF-10-84 ST 568.5

SP 118 SP 138 SP 160 SP 181 BELLAVEDUTA I SP 212 SP 239 SP 264



LIVELLO A  
 LIVELLO B  
 LIVELLO C  
 LIVELLO CALCARENITICO  
 TETTO PLOCIENE INF.  
 TETTO MESSINIANO  
 TETTO MIOCENE MED.

Autore G.GENTILI	Disegnatore U. BUGNO	Data 12/86	Allegato al Rapporto PROGRAMMA POZZO	ALLEGATO
Sezione AREA I	Disegno N° GL-158	Scala	"BELLAVEDUTA I"	2

SEZIONE IDROCARBURI  
 E GEOTECNICA DI NAPOLI  
 - 4 MAR. 1989  
 Prot. N. 1188