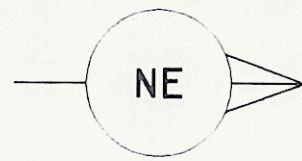


MC-344-81V

V.P. 101 TO V.P. 210



VP 101.00		VP 109.50	
TIME	RMS VEL	TIME	RMS VEL
0.10	1650	0.10	1650
0.54	2050	0.54	2050
0.64	2300	0.64	2300
0.96	2700	0.96	2700
1.30	2900	1.30	2900
3.00	3750	3.00	3750
4.80	4200	4.80	4200

DATUM CORR = -59 MS DATUM CORR = -65 MS

VP 135.00	
TIME	RMS VEL
0.10	1800
0.48	2000
0.76	2100
1.00	2300
1.15	2400
1.40	2700
1.76	3000
2.90	3800
4.80	4200

DATUM CORR = -124 MS

VP 165.50	
TIME	RMS VEL
0.10	1700
0.36	1850
0.70	2050
0.86	2150
1.05	2250
1.36	2500
1.86	3100
2.90	3750
4.80	4200

DATUM CORR = -106 MS

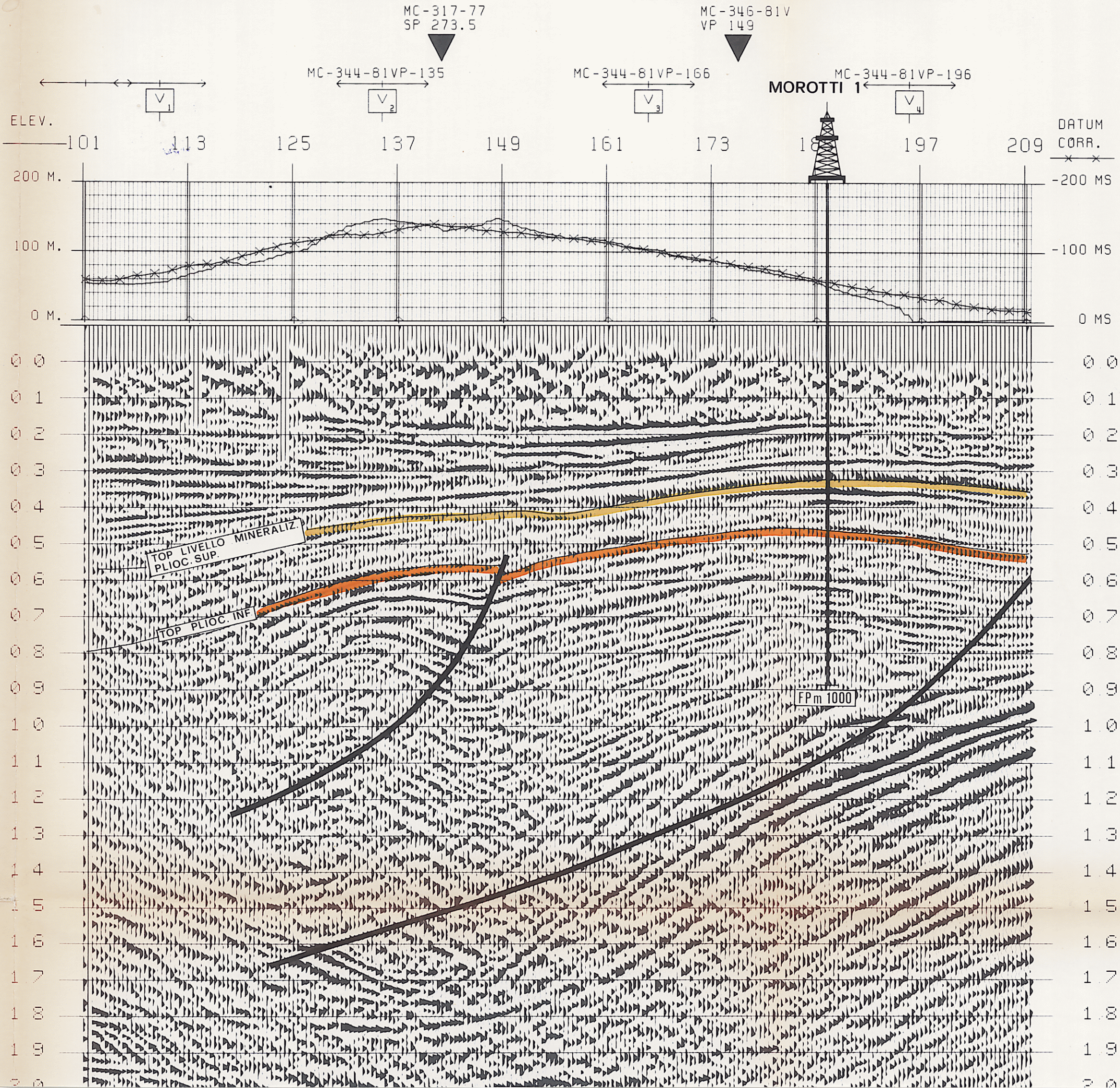
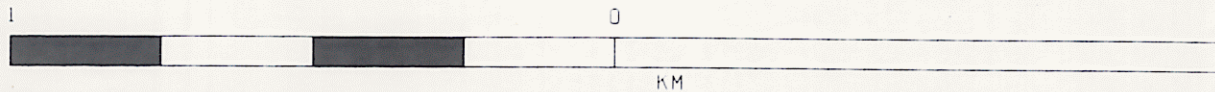
VP 195.50	
TIME	RMS VEL
0.10	1700
0.36	1900
0.80	2100
1.00	2250
1.40	2800
1.60	3000
2.85	3700
4.80	4200

DATUM CORR = -40 MS

1200PCT DBS MIG TVF

Allegato 3 Data AGOSTO '83 Disegno n° 579/2

5584



AGIP WESTERN

RICERCHE GEOFISICHE

AREA ITALIA-ZONA 3
PROSPECT LORETO

DATE SHOT SEPTEMBER, 198
 DATE PROCESSED DECEMBER, 1981

RECORDING DATA	PROCESSING SEQUENCE
PARTI NUMBER WRG F-81	1 EDIT GEO.AMPL. SR 2MS
RECORDER COBA-2 62 CH	2 CORRELATION SR 2MS
GAIN 1.F.P	3 GEOMETRICAL SPREADING GAIN
RECORDING FILTER (HZ) 12W-124	4 PREPROCESSOR/DECON
NOTCH FILTER (HZ) OUT	DECON TYPE MINIMUM PHASE INVERSE FILTER
SEG POLARITY CODE=0011	MIN. FREQ. DIST 12-140MS W.L. 1PCT
RECORD LENGTH 12+4SEC	STOP AUTOCORR. 5800MS NO. OF WINDOWS 3
SAMPLE RATE (MS) 2	DECON REEL N.104206
SUBSURFACE COVERAGE 1200 PCT	5 SURF. CONSISTENT RESID. STATICS.
GROUP INTERVAL (METERS) 30	6 VELOCITY ANALYSIS
NUMBER OF GROUPS 48	7 NMO. STATICS. MUTE APPLICATION.
WEATHERING VELOCITY 600 M/S	STRETCH DEPENDENT MUTE 130PCT
STATIC COMPUTATION VELOCITY 2500 M/S	8 SURF. CONSISTENT RESID. STATICS.
DATUM PLANE (ABOVE SEA LEVEL) 0	9 CDP CONSISTENT RESID. STATICS.
UPWARD GROUND MOTION = NEGATIVE NUMB. ON TAPE	10 STACK 1200PCT
	STACK REEL N. 100905
	11 RMS GAIN

SEISMOMETER ARRAY

X

000000000000 000000000000

GEOPHONE TYPE SENSOR SM4
 GEOPHONE FREQUENCY 14 HZ
 GEOPHONE/GROUP 24

X = 40 M

V.P. PATTERN

ENERGY SOURCE VIBROSETS