

LINEA G85-178

A6202

6000 FOLD S.P. 970 S.P. 220
 TIME MIGRATION T.V.F.
Permesso G.R7.AS

REPROCESSING AGIP 1989

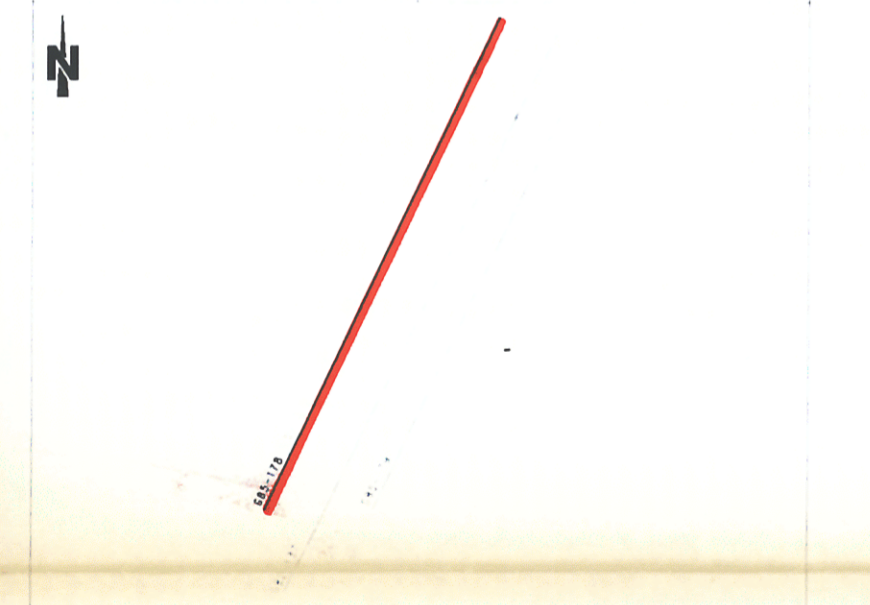
AREA SICILY CHANNEL ZONE G
 PROSPECT G.R7.AS

RECORDING	DATA	PLAYBACK	DATA
CONTRACTOR PARTY NO RECORDING INSTRUMENT SAMPLE RATE RECORD LENGTH FILTER L.C. ALIASING FILTER DATE	GEITALIA 103 L8016A 4 MS 6 SEC 6/18/82, 28/05/82 94/12/82, 28/05/82 APRIL 1986	DATUM PLANE VERTICAL SCALE NON ZONATA SCALE POLARITY CONVENTION PREPROCESSING REEL STACK REEL MIGRATION REEL PREVIOUS PROCESSING	SEA LEVEL 1 SEC - 5 CM 1 : 25000 SEI/SC *** 008319 008319 JANUARY 1987
SPREAD CONFIGURATION TRACE / S.P.	0-170-3357 240	SP 1 240	
GROUP / INTERVAL GEOPHONES / GROUP GEOPHONES / HZ	13.55 M 6		
ENERGY/SOURCE GUN DEPTH CABLE DEPTH	AIRGUN 4 M 12 M		

DISEGNO N 7/9bis allegato **5**

PROCESSING

INPUT FORMAT: SEC D 9 TRACKS 6250 BP1 ADJACENT TRACE SIM PREPROCESSOR INSTRUMENT DEPHASING: MINIMUM PHASE AMPLITUDE RECOVERY: GEN. SPREADING SOURCE AND CABLE DEPTH: CORR. 12 MS D.B.S.: PREDICTIVE TIME PREDICTION INTERVAL 4 MS OPERATOR LENGTH 220 MS 2 WINDOW W.L. 32	*** 006352 006358 006359 006357
VELOCITY ANALYSIS MULTIPLE REMOVAL: F.K. FILTER D.W.O. CORRECTION MUTE INSIDE STACK 60-FOLD MINIMUM TO ZERO PHASE CONVERSION TIME MIGRATION: FINITE DIFFERENCE TIME VARIANT EQUALIZATION (256-512)	T.V.F. PARAMETERS 11HZ 24DB 60HZ 48DB 9HZ 24DB 50HZ 48DB 7HZ 24DB 40HZ 48DB



DATE APRIL 1989
 PROCESSED BY A. BETTI E. STOLF
 CONTROLLED BY A. TAGI IACARNE

SETTEMBRE 1990

