

Agip GERM
 AUTHORITY: DRAFT No. 772 Permit G.R7.AS
 SICILY CHANNEL - ZONE 'G'

BASE SIRACUSA Fm

CONTOUR INTERVAL 25 meters

INDEX MAP

Scale 1:100,000

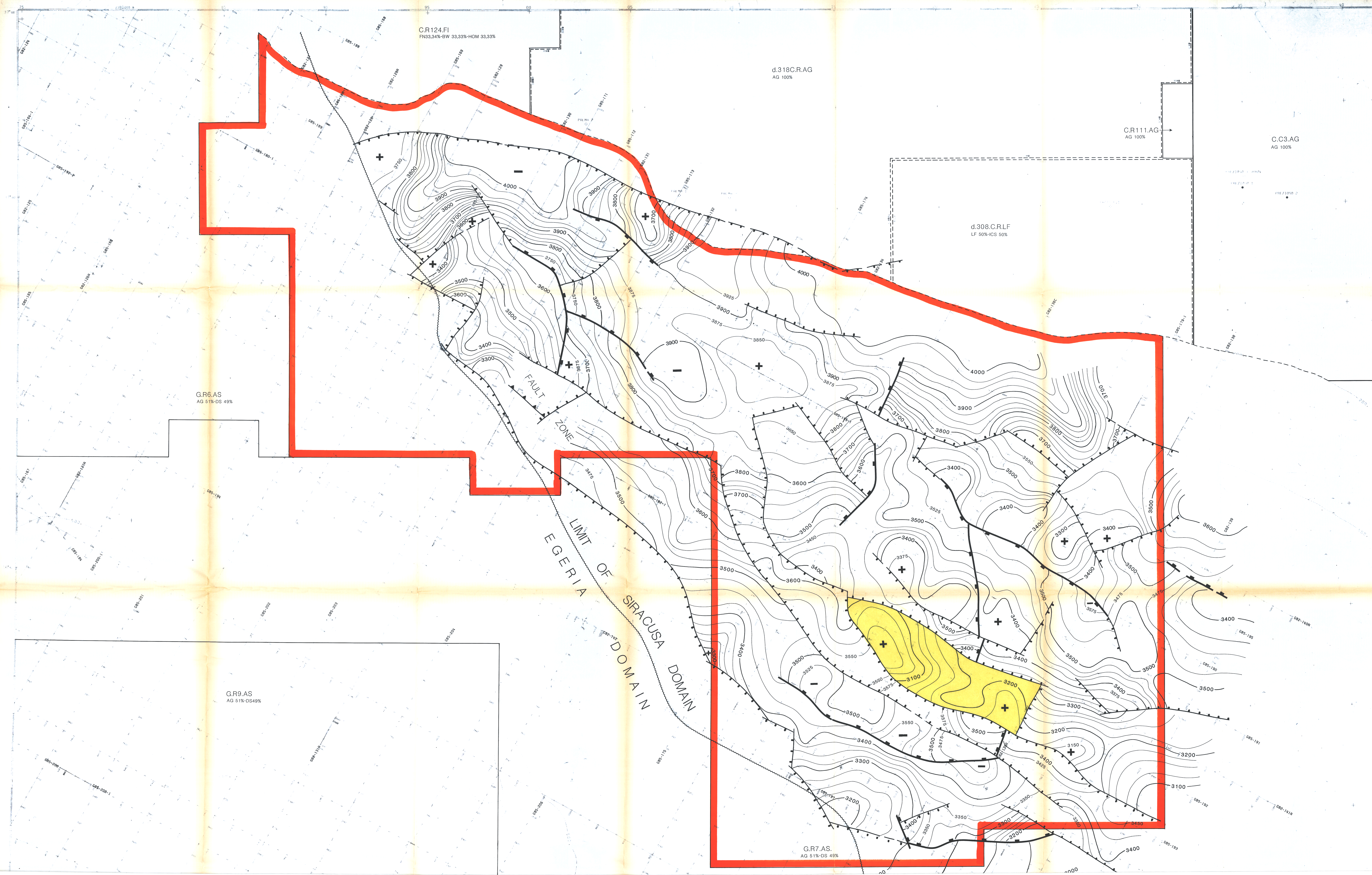
PROJECTION: UTM
 SPHEROID: Everest
 DATUM: Everest
 ZONE: 11N
 CENTRAL MERIDIAN: 15 15ST GR
 FALSE EASTING: 250000 m
 LATITUDE ORIGIN: 0
 FALSE NORTHING: 0
 SCALE FACTOR: 0.9998

SHEET: 1/100,000 : R-7

Scale 1:50,000

0 1 2 3 4 Km.

DATE: SEPTEMBER 1987



- WELLS LEGEND**
- PROPOSED LOCATION
 - UNCLASSIFIED WELL
 - OIL
 - GAS
 - OIL AND GAS
 - OIL SHOW
 - GAS SHOW
 - OIL AND GAS SHOW
 - ◆ JUNKED AND ABANDONED WELL
 - ◇ DRY
 - SHUT IN, EXHAUSTED OIL
 - SHUT IN, EXHAUSTED GAS
 - SHUT IN, EXHAUSTED OIL AND GAS
 - SURFACE LOCATION OF DEVIATED WELL
 - DIRECTIONAL WELL
 - DRILLING WELL
 - GEOTHERMAL
- Legend**
- Pliocene normal fault
 - Mesozoic normal fault
 - Reverse fault
 - Limit of Ragusa domain