

LINEA G85-179

6000 FOLD S.P. 180 S.P. 930
 TIME MIGRATION
 T.V.F.

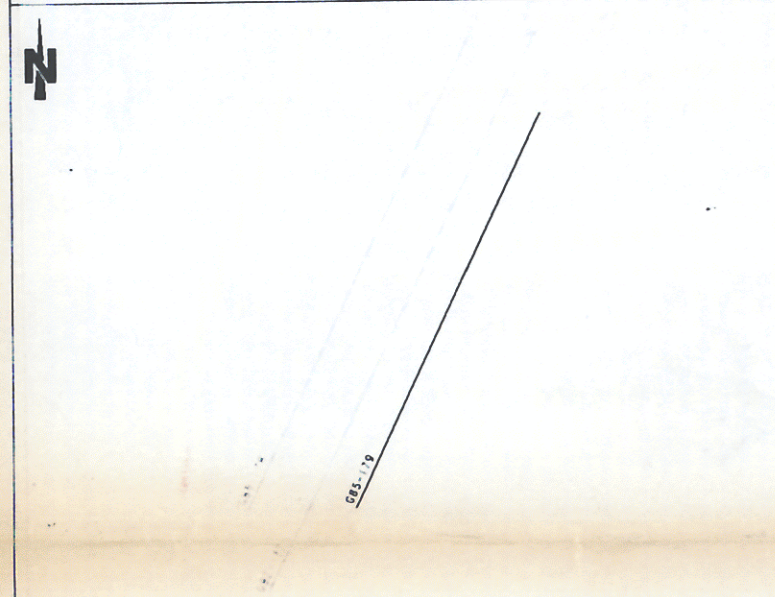
Agip REPROCESSING AGIP 1989
 AREA SICILY CHANNEL ZONE G
 PROSPECT G.R7.AS

RECORDING	DATA	PLAYBACK	DATA
CONTRACTOR	GEVITALIA	DATUM PLANE	SEA LEVEL
PARTY NO	103	VERTICAL SCALE	1 SEC = 5 CM
RECORDING INSTRUMENT	LR5-16A	HORIZONTAL SCALE	1:25000
SAMPLE RATE	4 MS	POLARITY CONVENTION	SEISWIC
RECORD LENGTH	8 SEC	PREPROCESSING REEL	***
FILTER L.C.	8/18/42, 28/10/1	STACK REEL	080319
ALIASING FILTER	84/132/42, 28/10/1	MIGRATION REEL	080319
DATE	APRIL 1989	PREVIOUS PROCESSING	JANUARY 1989
SPREAD CONFIGURATION		SP	1
TRACE / S.P.		240	240
GROUP / INTERVAL		13.33 M	170-3187
GEOPHONES / GROUP		6	
GEOPHONES / MZ			
ENERGY/SOURCE		41800M	
GUN DEPTH		6 M	
CABLE DEPTH		12 M	

DISEGNO N° 7/10 allegato 6

PROCESSING

INPUT FORMAT: SEG D	***
9 TRACKS 6250 BP1	606336
DEMULTIPLIED	606331
ADJACENT TRACE SUM	606363
PREPROCESSOR	606337
INSTRUMENT DEPHASING: MINIMUM PHASE	
AMPLITUDE RECOVERY: GEM, SPREADING	
SOURCE AND CABLE DEPTH, CORR. 12 MS	
D.B.S.: PREDICTIVE TYPE	
PREDICTION INTERVAL: 4 MS	
OPERATION LENGTH: 220 MS	
2 WINDOW W.L. 35	
VELOCITY ANALYSIS W	
MULTIPLE REMOVAL: F.A. FILTER	
D.M.O. CORRECTION	
MUTE INSIDE	
STACK 60-FOLD	
MINIMUM TO ZERO PHASE CONVERSION	
TIME MIGRATION / FINITE DIFFERENCE	
TIME VARIANT FILTER	1HZ 24DB 50HZ 40DB
TIME VARIANT EQUALIZATION	2HZ 24DB 50HZ 40DB
	2HZ 24DB 40HZ 40DB



DATE APRIL 1989 GIUGNO 1989
 PROCESSED BY A. BETTI E. STOLF
 CONTROLLED BY A. TAGI IACARNE

