

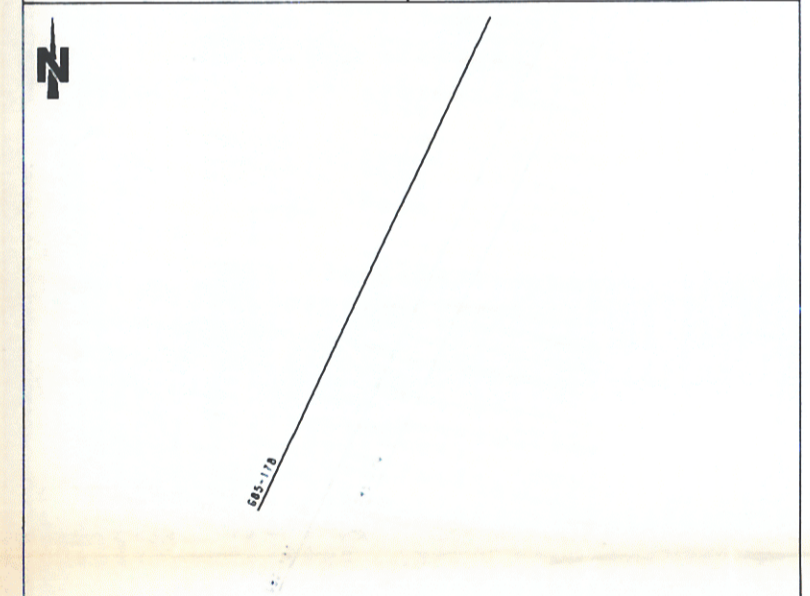
LINEA G85-178

6000 FOLD S.P. 970 S.P. 220
Permesso G.R7.AS
REPROCESSING AGIP 1989
 AREA SICILY CHANNEL ZONE G
 PROSPECT G.R7.AS.

RECORDING	DATA	PLAYBACK	DATA
CONTRACTOR PARTY NO RECORDING INSTRUMENT RECORD LENGTH SAMPLE RATE RECORD LENGTH FILTER L.C. ALIASING FILTER DATE	GEOTALLIA 100 LMS-16A 4 MS 8/1/81/82, 08/08/81 APRIL 1989	DATE PLANE VERTICAL SCALE HORIZONTAL SCALE POLARITY CONVENTION PREPROCESSING REEL MIGRATION REEL PREVIOUS PROCESSING	SEA LEVEL 1 SEC - 5 CM 1 : 25000 SEismic 444 68819 68819 JANUARY 1987
SPREAD CONFIGURATION TRACE / S.P.	0-170-3357 240	SP 1 1	140 1
GROUP / INTERVAL GEOPHONES / GROUP GEOPHONES / RZ ENERGY/SOURCE GUN DEPTH CABLE DEPTH	13.33 M 6 AIRGUN 6 M 12 M		

DISEGNO N° 7/9 **allegato 5**

PROCESSING	
INPUT FORMAT: SEG D 9 TRACKS 6250 BP ADJACENT TRACE SUM PREPROCESSOR INSTRUMENT DEPHASING: MINIMUM PHASE AMPLITUDE RECOVERY: GDM, SPREADING SOURCE AND CABLE DEPTH CORR: 12 MS D.B.S.: PREDICTIVE TYPE PREDICTION INTERVAL: 4 MS OPERATOR LENGTH: 220 MS 2 WINDOW W.L. 3%	*** 606352 606358 606358 606357
VELOCITY ANALYSIS W MULTIPLE REMOVAL: F.A. FILTER D.W.O. CORRECTION MUTE INSIDE STACK 60-FOLD MINIMUM TO ZERO PHASE CONVERSION TIME MIGRATION: FINITE DIFFERENCE TIME VARIANT FILTER TIME VARIANT EQUALIZATION (+256-512)	T.V.F. PARAMETERS 1HZ 2400 60HZ 4800 2HZ 2400 50HZ 4800 7HZ 2400 40HZ 4800



DATE APRIL 1989
 PROCESSED BY A. BETTI E. STOLF
 CONTROLLED BY A. TAGLIACARNE
GIUGNO 1989

