

**Agip** GERM  
 AUTHORITY: DRAFT No. 772 Permit G.R7.AS  
 SICILY CHANNEL - ZONE 'G'

**BASE SIRACUSA Fm**

CONTOUR INTERVAL 25 meters

INDEX MAP

Scale 1:100,000

MAP LONGITUDE IS REFERRED TO W. MERID.

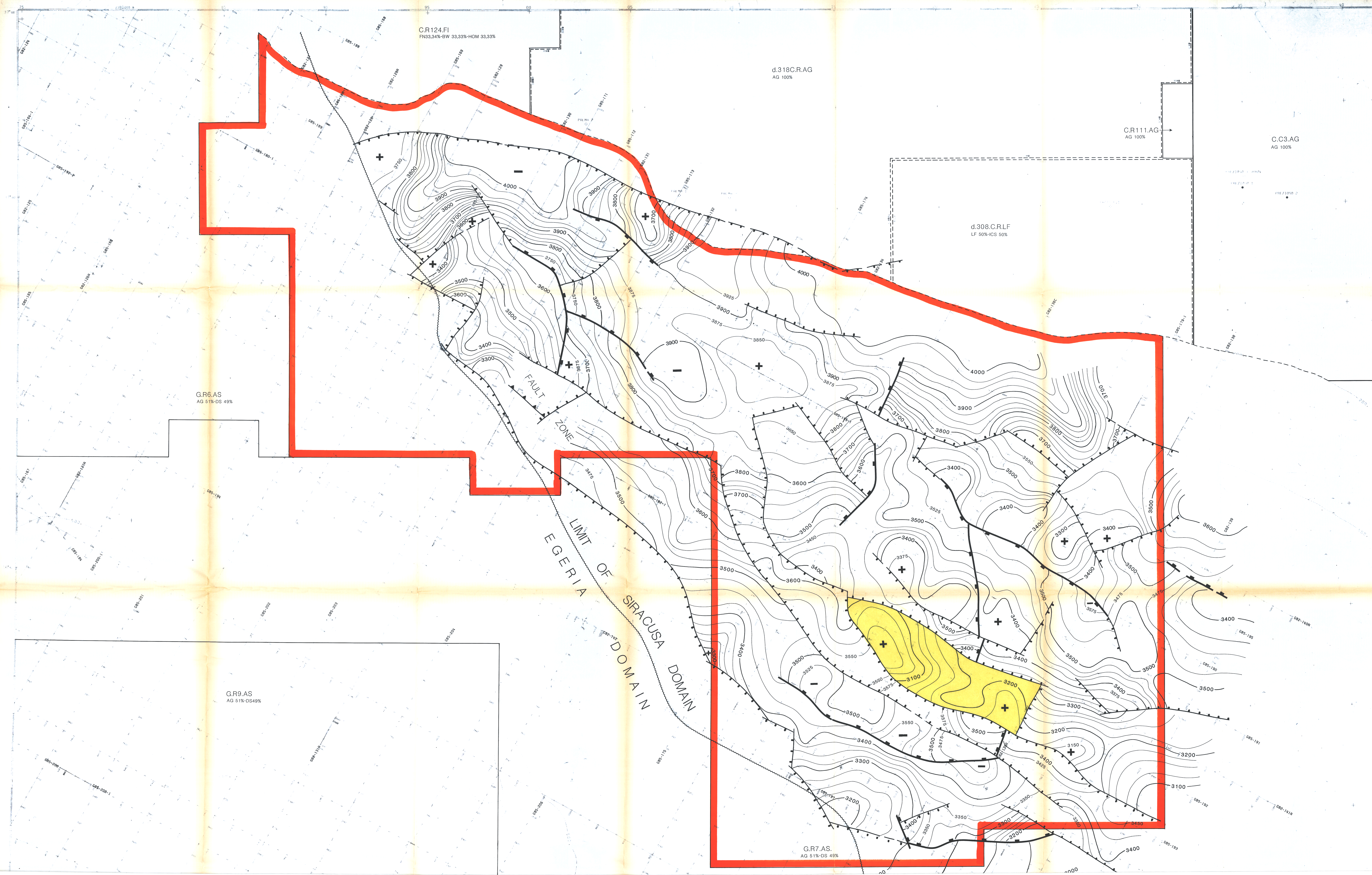
SCALE 1/50,000

0 1 2 3 4 Km.

DATE: SEPTEMBER 1987

PROJECTION: UTM  
 SPHEROID: MERIDIAN  
 DATUM: W. MERID. 1980  
 ZONE: 11.0  
 CENTRAL MERIDIAN: 15.183333  
 FALSE EASTING: 250000  
 FALSE NORTHING: 0  
 SCALE FACTOR: 0.9998

SHEET: 1/100,000 : R-7



- WELLS LEGEND**
- PROPOSED LOCATION
  - UNCLASSIFIED WELL
  - OIL
  - GAS
  - OIL AND GAS
  - OIL SHOW
  - GAS SHOW
  - OIL AND GAS SHOW
  - ◆ JUNKED AND ABANDONED WELL
  - ◇ DRY
  - SHUT IN, EXHAUSTED OIL
  - SHUT IN, EXHAUSTED GAS
  - SHUT IN, EXHAUSTED OIL AND GAS
  - SURFACE LOCATION OF DEVIATED WELL
  - DIRECTIONAL WELL
  - DRILLING WELL
  - GEOTHERMAL
- Legend**
- Pliocene Normal Fault
  - Mesozoic Normal Fault
  - Reverse Fault
  - Limit of Ragusa Domain