

Agip AUTHOR: DRAW N. 2/5 ZONE G
 GERM A6235 PERMIT G.R2.AS

HORIZON "B"

TIME MAP

COUNTOUR INTERVAL: 50 msec. T.W.T.

INDEX MAP

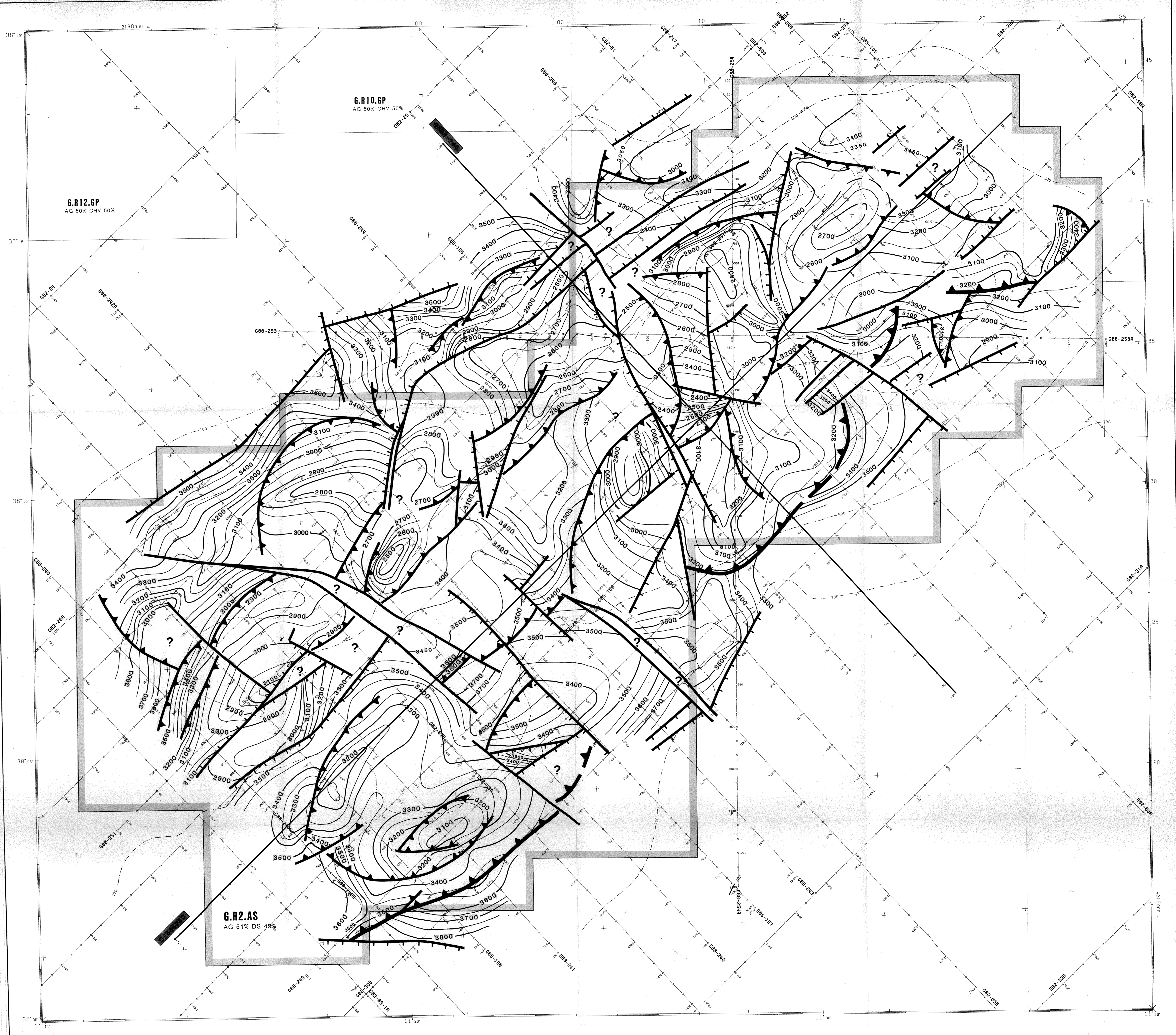
PROJECTION: GAUSS-BORGA
 SPHEROID: HAYFORD
 DATUM: N. MARI0 (1940)
 ZONE: 33.0
 CENTRAL MERIDIAN: 15 EAST GR.
 FALSE EASTING: 2520000 m.
 LATITUDE ORIGIN: 0
 FALSE NORTHING: 0
 SCALE FACTOR: 0.9996

MAP LONGITUDE IS REFERRED TO N. MARI0

SCALE 1/50000

4 ANNEXES DATE: OCTOBER 1989

AUTOMATIC DRAFTING PERFORMED BY THE EDP CENTER OF AGIP (MILAN)



- WELL LEGEND**
- PROPOSED LOCATION
 - UNCLASSIFIED WELL
 - OIL
 - GAS
 - OIL AND GAS
 - OIL SHOW
 - GAS SHOW
 - OIL AND GAS SHOW
 - JUNKED AND ABANDONED WELL
 - DRY
 - SHUT IN, EXHAUSTED OIL
 - SHUT IN, EXHAUSTED GAS
 - SHUT IN, EXHAUSTED OIL AND GAS
 - SURFACE LOCATION OF DEVIATED WELL
 - DIRECTIONAL WELL
 - DRILLING WELL
 - GEOTHERMAL
- LEGEND**
- NORMAL FAULT
 - ▲ REVERSE FAULT
 - POSSIBLE STRIKE-SLIP FAULT