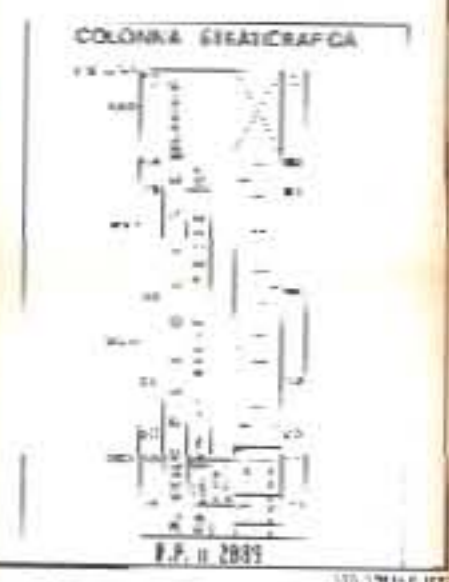


carta indice



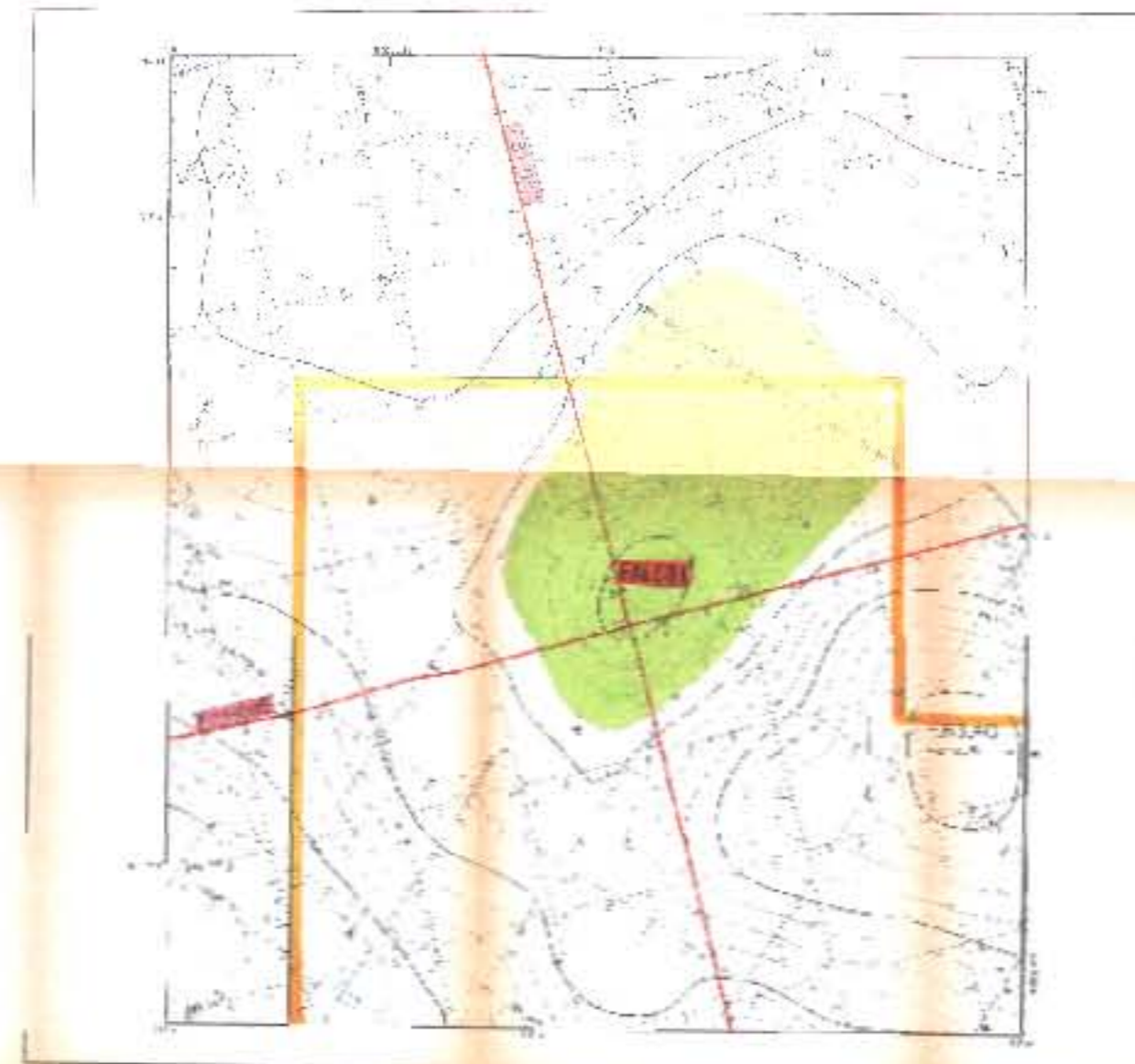
COORDINATE GEOGRAFICHE: 43° 07' 00" N - 15° 07' 00" E
PONDALE: 111 m
TAVOLA ROTAZIONE: 14 m
DISTANZA DALLA COSTA: 121 km
DRILL: 2-4F - 8 SONDINI (2726 m)
PROFONDITÀ FINALE: 2027 m



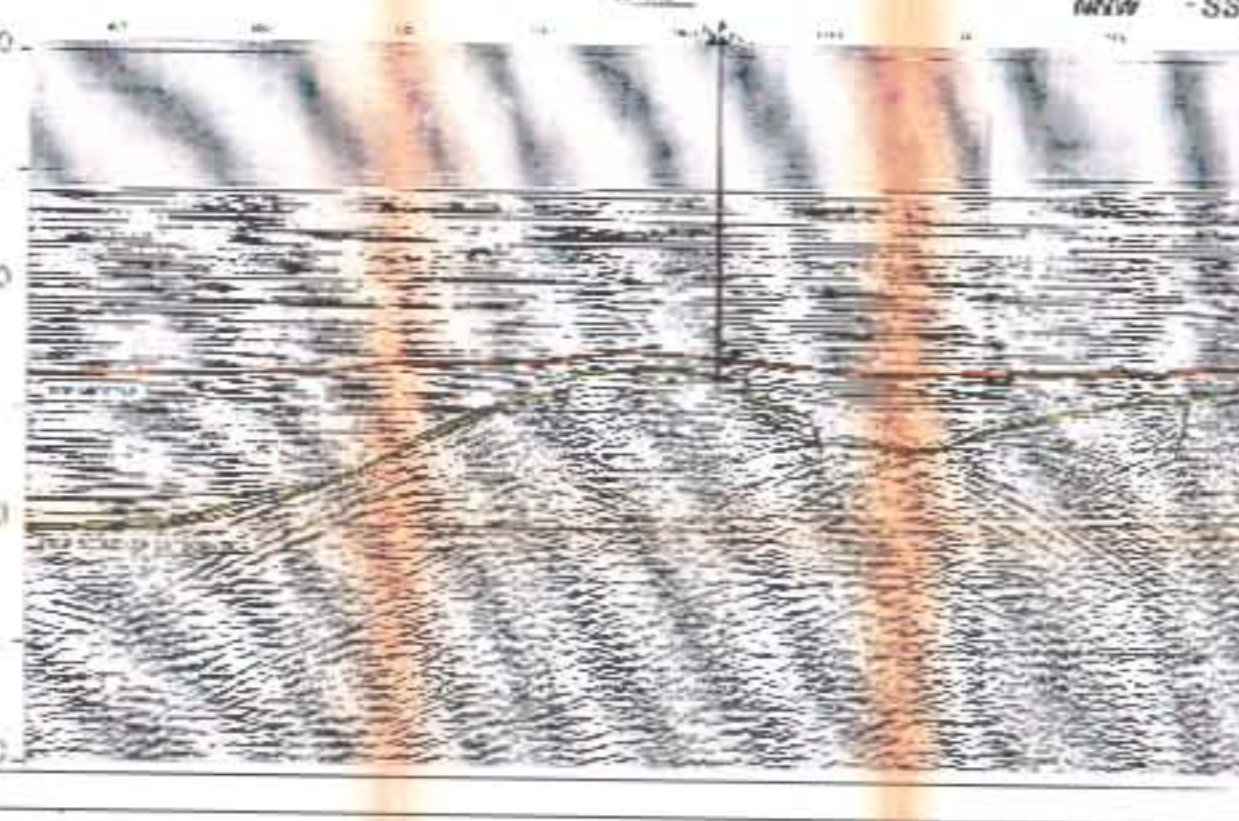
TOP CARBONATI - ISOBATE C.I.: 25m



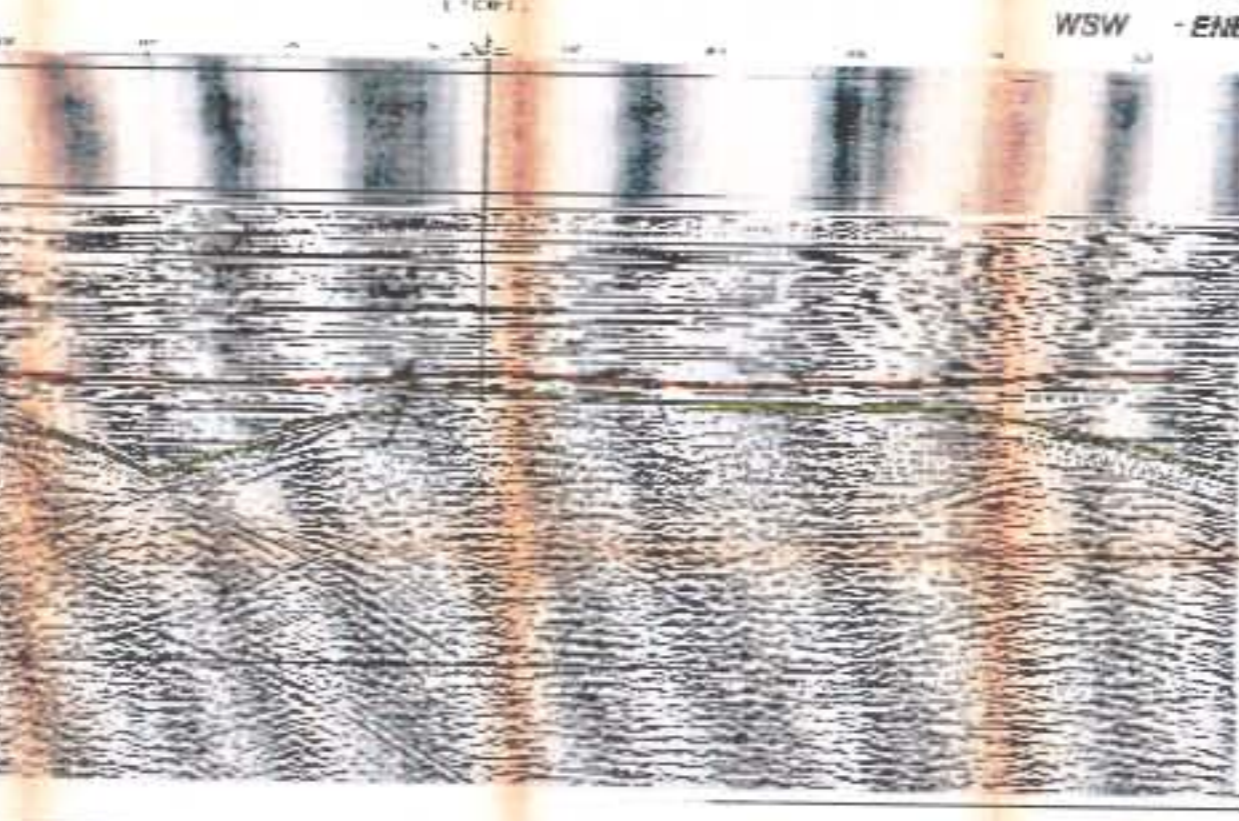
TOP MIOCENE - ISOBATE C.I.: 25m



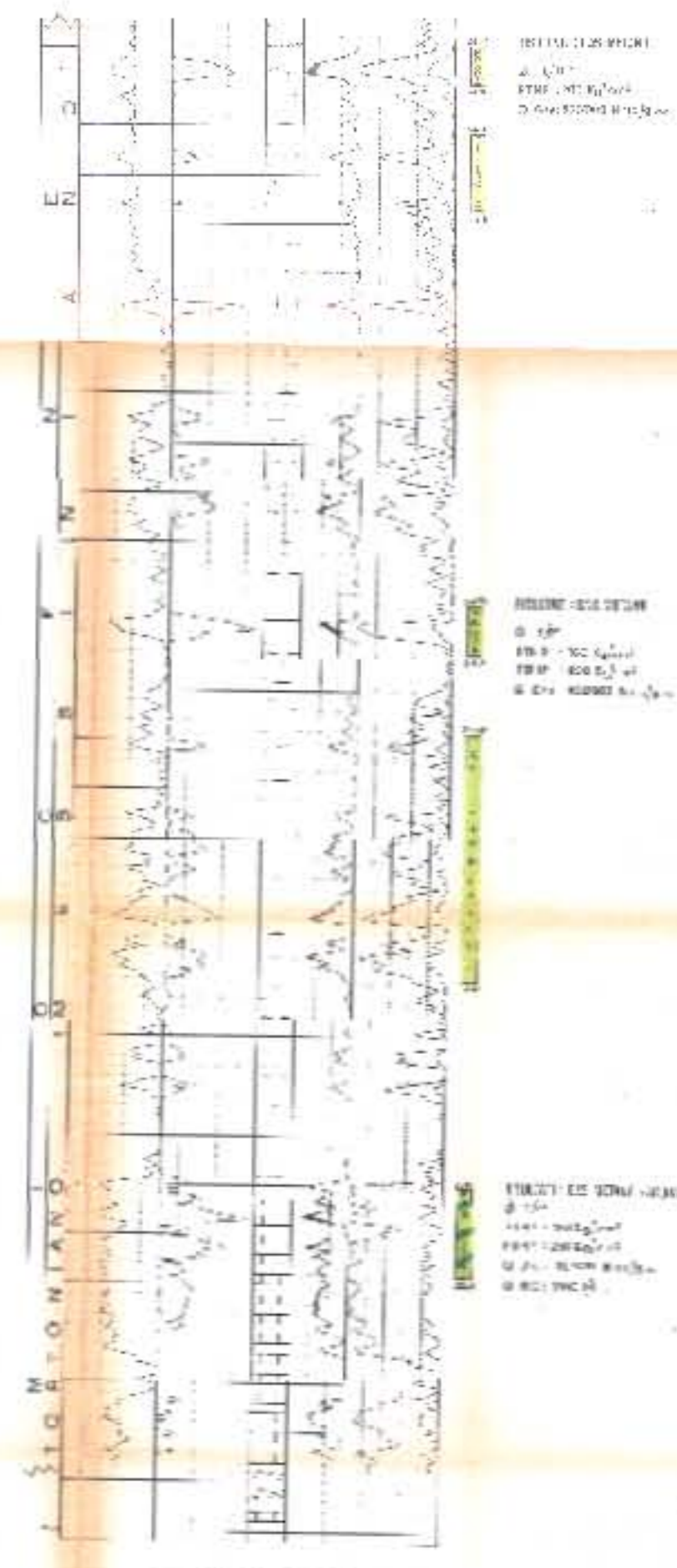
LINEA F81-097 FALCO 1



LINEA F81-085 FALCO 1



C.P.I.



T.D. 2859m (-2525)
NEL PLOCCO INFERIORE I LIVELLI INDICATI A SINISTRA
IN m 276 277 278 279 280 281 282 283 284 285 286