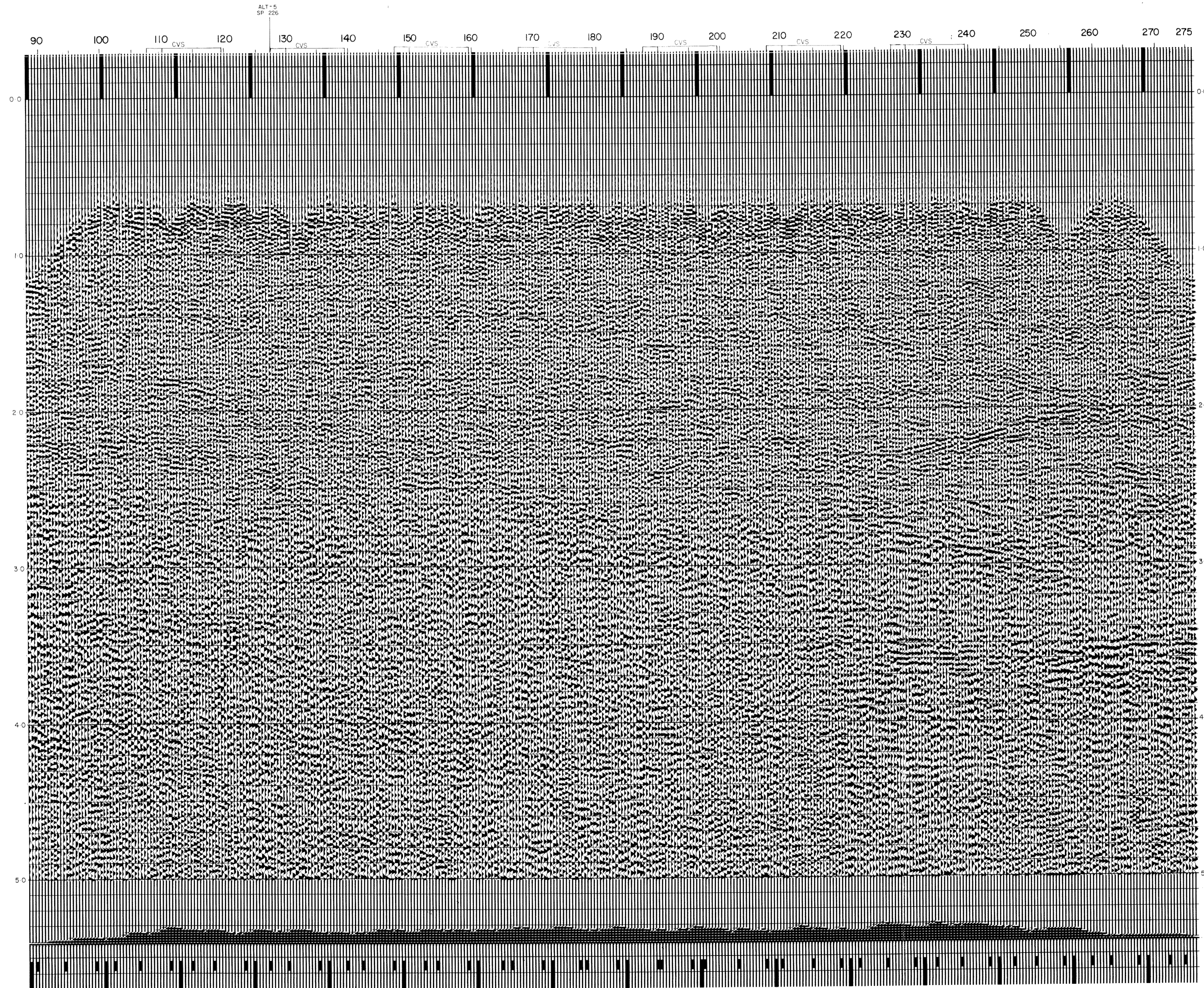
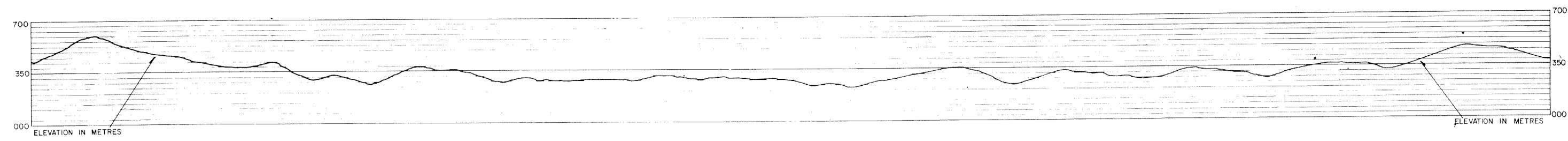


SIR LINE ALT-6

SP-90-275

TIME	VSTK	VINT
0	2800	2800
390	5600	5600
1090	4250	4576
1470	4750	5918
1980	5250	6470
3030	6000	7204
5000	6500	7201



Line ALT-6
SP's 100-264

E.
DIRECTION OF SHOOTING
DAS + TVF

S.I.R.
ALTAVILLA



SEFEL & ASSOCIATES LTD
SEISMIC DATA PROCESSING
LONDON ENGLAND

DATE PROCESSED OCT 1977
REEL NUMBER 5301
CONTRACT NUMBER 340

FIELD RECORDING

RECORDED BY S.I.A.G. PARTY 770304
DATE 15/6-21/6/77 SYSTEM DFS III
FORMAT 9 TRACK TIAC GAIN BINARY
ENERGY SOURCE DYNAMITE
DESCRIPTION SINGLE HOLE, CHARGE SIZE 3-13 Kg, DEPTH 10-24m
CABLE 2400m SEWIT No TRACES 48
LENGTH 2400m SEWIT No TRACES 48
GROUP INTERVAL 50m TRACE DIRECTION 48 (wedging)
ARRAY EVSL 14Hz, 48 GEOPH/TR
OFFSET IN LINE 50-1200 PERPENDICULAR 0-70m
PARAMETERS
RECORDING FOLD 6 S.P. SPACING VARIABLE
SAMPLE INTERVAL 2ms RECORD LENGTH 6secs
RECORDING FILTER 12-124 Hz
RECORDING DIRECTION E

DIGITAL PROCESSING

SEQ	PROCESS	PARAMETERS
1	DEMULTIPLX	WITH GAIN RECOVERY & CONTROL CURVE
2	RESAMPLE	2-4 ms
3	TRACE GATHER	WITH EDIT
4	FILTER	TIME VARYING SEE BELOW
5	FIELD STATICS	TO DATUM PLANE 500m ASL
6	VELOCITY ANALYSIS	CVS EVERY 1 Km REF 500m ASL
7	NMO AND MUTE	
8	AUTOMATIC STATICS	± 20ms CORRELATION
9	CDP STACK	
10	DECONVOLUTION	MINIMUM PHASE SEE BELOW
11	EQUALISE	TIME VARYING
12	FILTER	TIME VARYING SEE BELOW
13	BULK STATICAL	+337ms (DATUM PLANE CORRECTION)
14	DISPLAY	

DECON	OPERATION LENGTHS	PREDICTIVE GAP	DERIVATION WINDOWS	APPLICATION WINDOWS	REMARKS
10	200	40	500-3000	WHOLE TRACE	

FILTER	CUT OFF POINT	6 DB POINT	60 DB POINT	CUT OFF POINT	APPLICATION TIMES FOR SHOTPOINTS SPECIFIED
4	17	20	45	48	0-2000
	12	15	37	40	2500-5000
12	17	20	45	48	0-1500
	12	15	45	48	2000
	12	15	37	40	2500-5000

ALL TIMES IN MILLISECONDS ALL FREQUENCIES IN HERTZ
FILTERS INTERPOLATED LINEARLY BETWEEN APPLICATION TIMES
APP. APPLICATION TIMES INTERPOLATED LINEARLY BETWEEN SHOTPOINTS
OPERATION LENGTH GIVEN IS ACTIVE LENGTH ADD GAP FOR TOTAL LENGTH

SAMPLE RATE 4 ms DATUM CORRECTION 1000 m ASL
SCALES Horizontal 1: 25,000 Vertical 5 m/sec
RECORDING POLARITY
PROCESSING POLARITY POSITIVE N° gives black peak.

