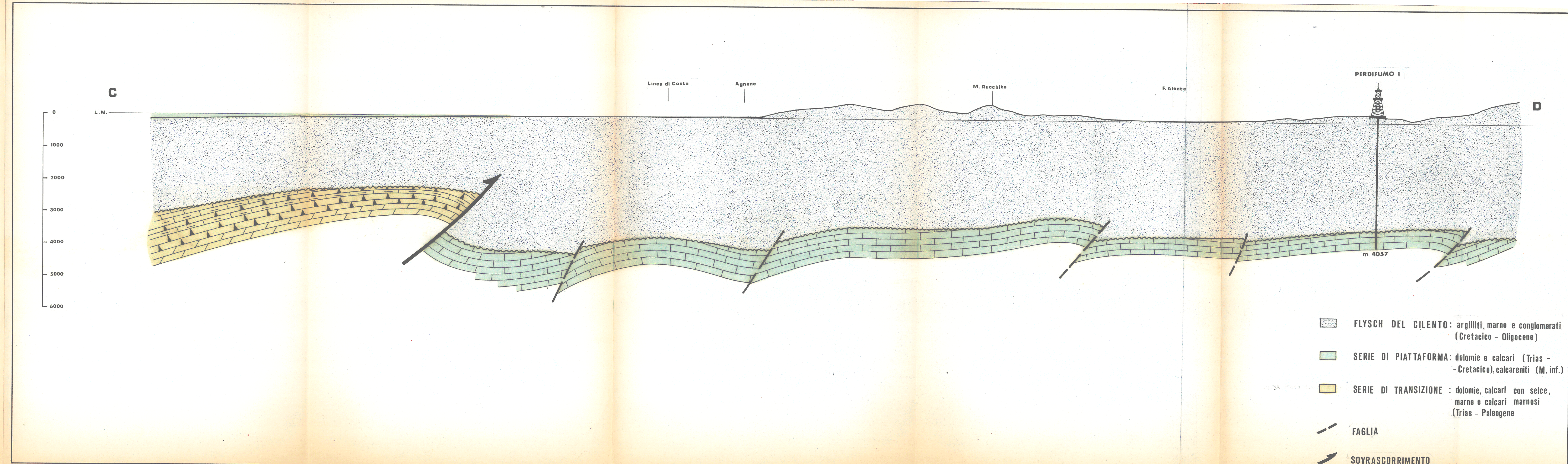







<b>Agip</b> S.p.A. ATTIVITÀ MINERARIE RE IM		Istanze Cilento terraferma e mare	
		<b>SEZIONE GEOLOGICA SCHEMATICA</b>	
		A 6038	
Dis. n°	Aggiornato al	Allegato a	Allegato n°
14/1			2
Scala	Data	Autore	Disegnato da
1:50'000	FEBB. 1976		



-  FLYSCH DEL CILENTO: argilliti, marne e conglomerati (Cretacico - Oligocene)
-  SERIE DI PIATTAFORMA: dolomie e calcari (Trias - Cretacico), calcareniti (M. inf.)
-  SERIE DI TRANSIZIONE: dolomie, calcari con selce, marne e calcari marnosi (Trias - Paleogene)
-  FAGLIA
-  SOVRASCORRIMENTO