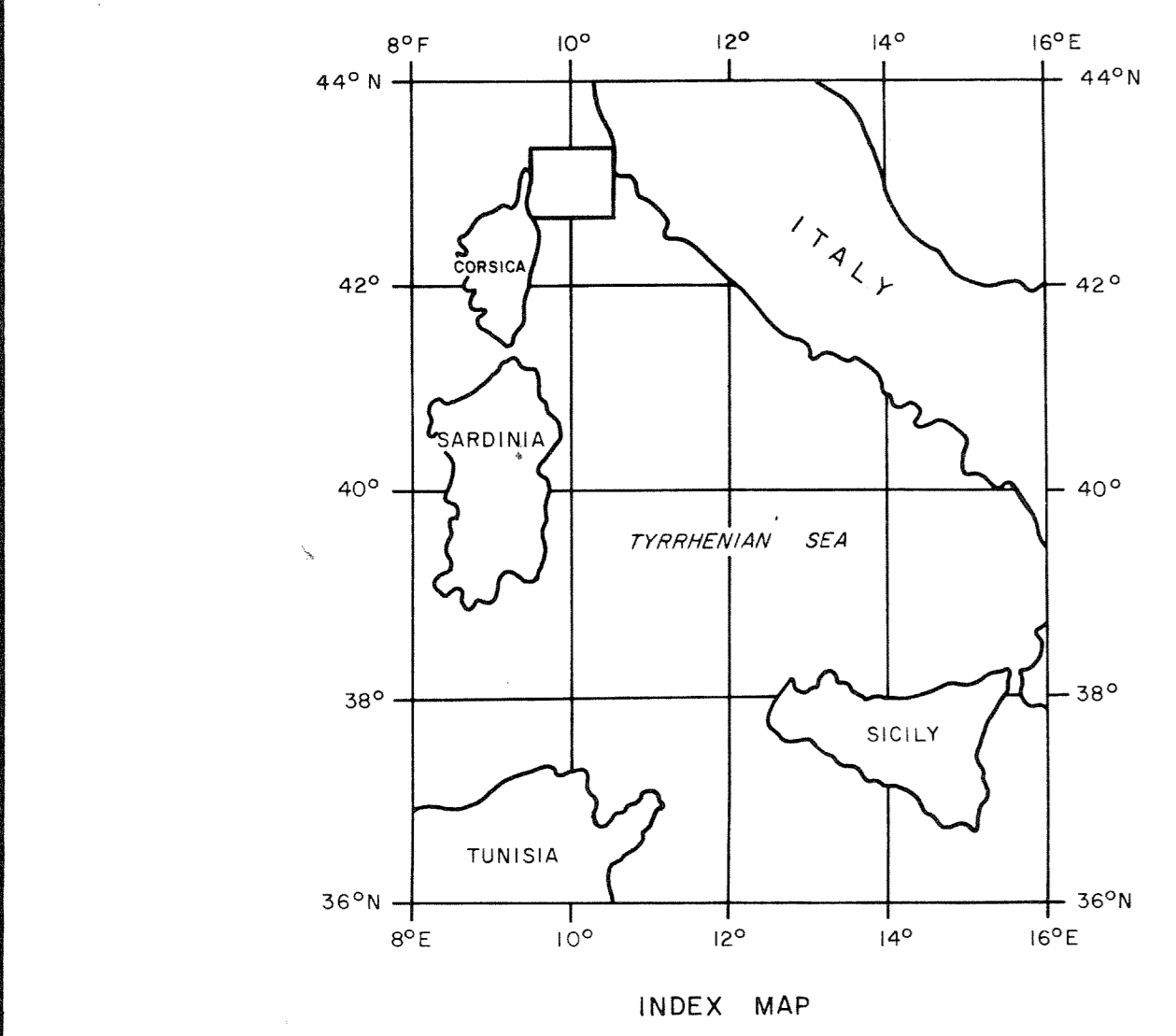
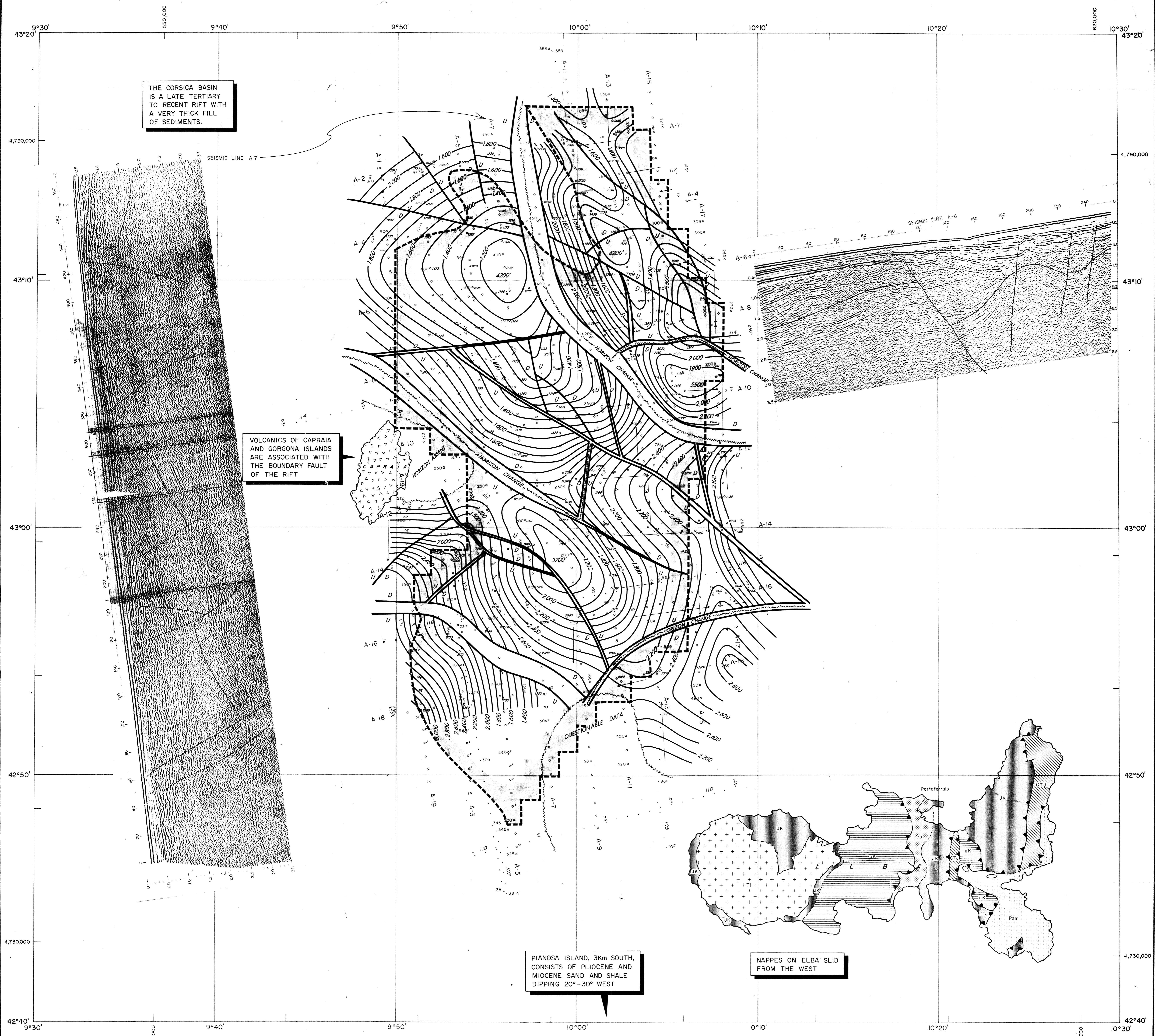


THE CORSICA BASIN IS A LATE TERTIARY TO RECENT RIFT WITH A VERY THICK FILL OF SEDIMENTS.

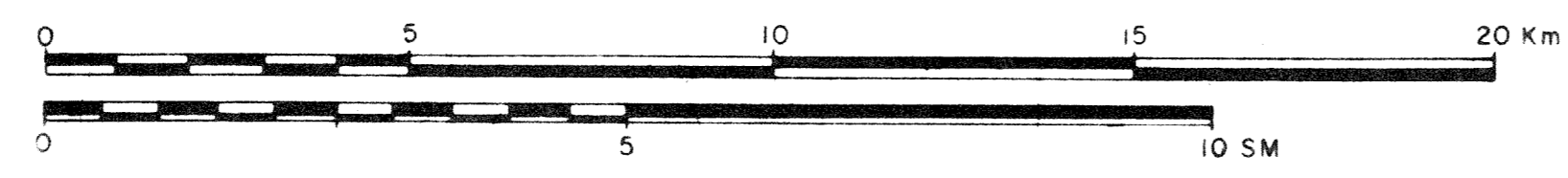
VOLCANICS OF CAPRAIA AND GORGONA ISLANDS ARE ASSOCIATED WITH THE BOUNDARY FAULT OF THE RIFT

PIANOSA ISLAND, 3km SOUTH, CONSISTS OF PLIOCENE AND MIOCENE SAND AND SHALE DIPPING 20°-30° WEST

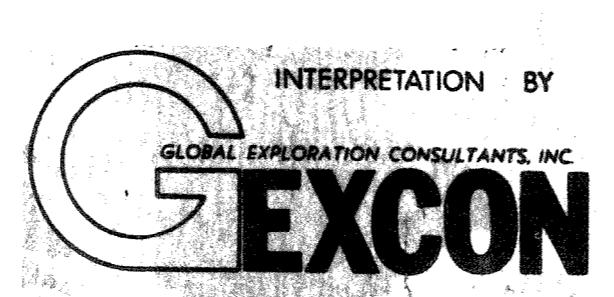
NAPPES ON ELBA SLID FROM THE WEST



CONTOUR INTERVAL: 100 MILS  
SCALE 1:100,000



Maps based on UNIVERSAL TRANSVERSE MERCATOR projection  
INTERNATIONAL Spheroid  
STANDARD CENTRAL MERIDIAN ZONE 32, 9°00'E



- LEGEND**
- MIOCENE-PLIOCENE VOLCANICS
  - QUARTZ MONZONITE AND GRANODIORITE
  - EOCENE FLYSCH
  - UPPER CRETACEOUS FLYSCH
  - JURASSIC AND LOWER CRETACEOUS OPHIOLITE AND FLYSCH
  - CARBONIFEROUS, TRIASSIC, LOWER JURASSIC SEDIMENTS
  - METAMORPHIC COMPLEX (CARBONIFEROUS-TRIASSIC)
  - THRUST FAULT (GLIDE PLANE OF NAPPES)
  - RECORDING BOAT POSITION (SEISA)
  - SATELLITE FIX
  - AGIP SHOT LOCATION

ER. 27. AZ  
MARINE GEOPHYSICAL SURVEY  
FOR  
ANSCHUTZ CORPORATION  
TUSCANY AREA  
OFFSHORE ITALY

DATE: NOVEMBER, 1974



ALLEGATO AL RAPPORTO FINALE PER L'ISTANZA DI RINUNCIA AL PERMESSO "ER. 27. AZ" NOV. 1978

SEISMIC EXPLORATIONS INT'L, S.A.

