

TYRRHENIAN SEA
LINE 30
SP. 1000 - 1067

Line 5A
SP. 2065

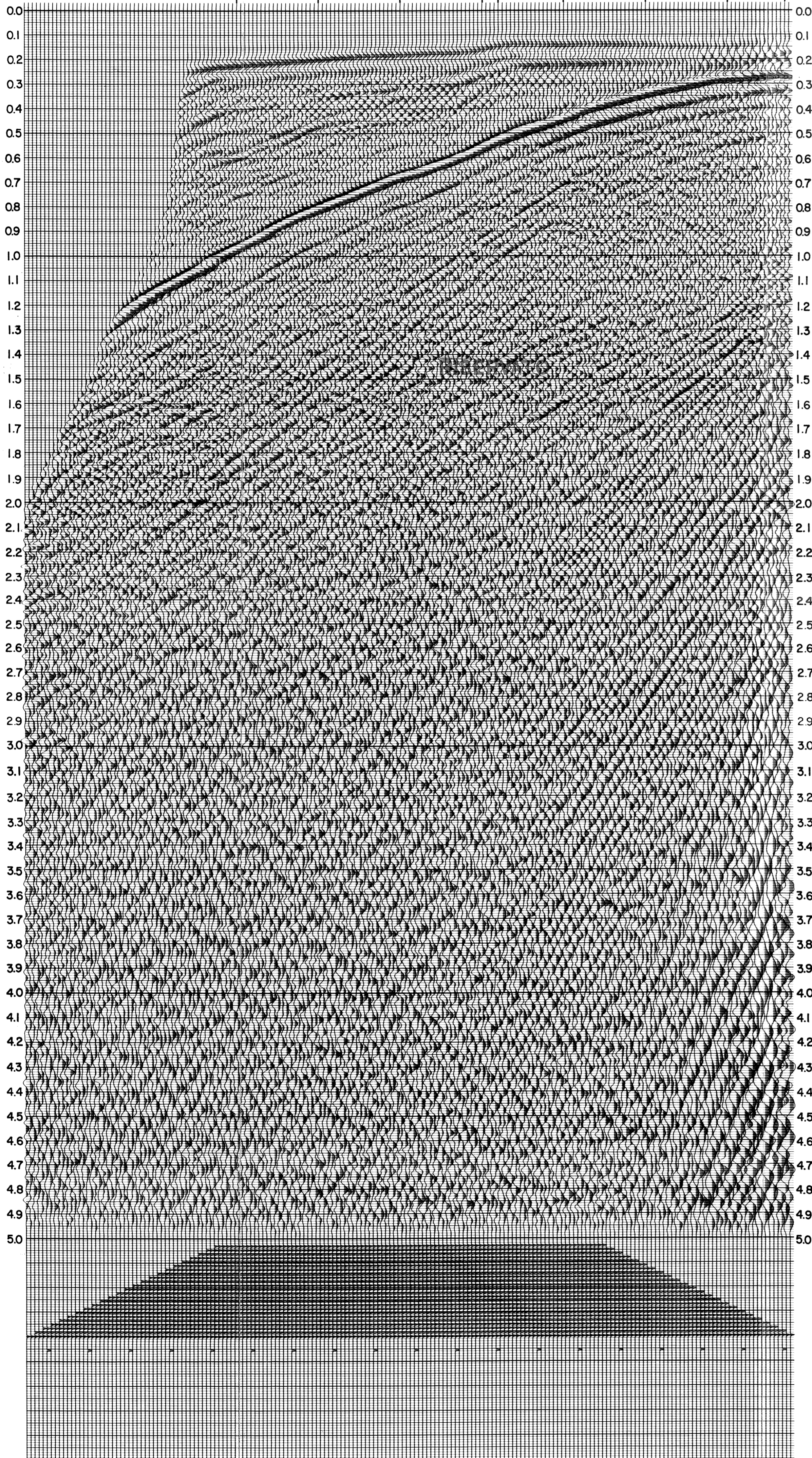
VS
1000
390'

VC
1032

174'
1040

1060

VC
1067
144'



SEZIONE JOROCARBURI
di POLI
22 OTT. 1975
Prof. N. 3586
Sez. _____
Poziz. _____

SEIS CAN

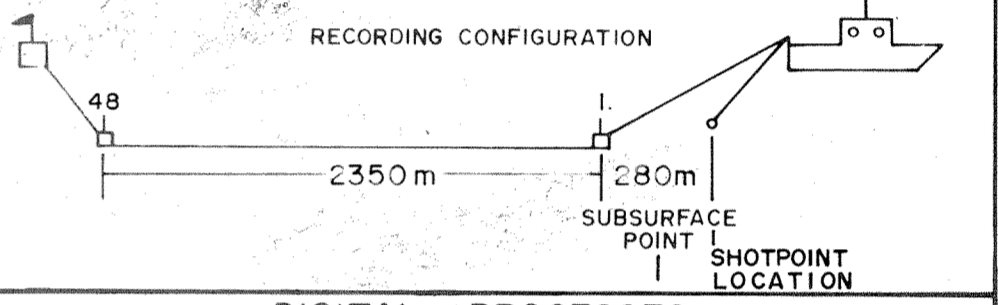
DELTA

NE
RISERVATO
SP. 1000-1067 FOLD 24 LINE 30

TYRRHENIAN SEA
AREA
CANADIAN SUPERIOR OIL LTD.
CLIENT

T/V DECON + 2400% CDP STACK + STVF
PRIMARY DIGITAL PROCESSES
RECORDING DATA

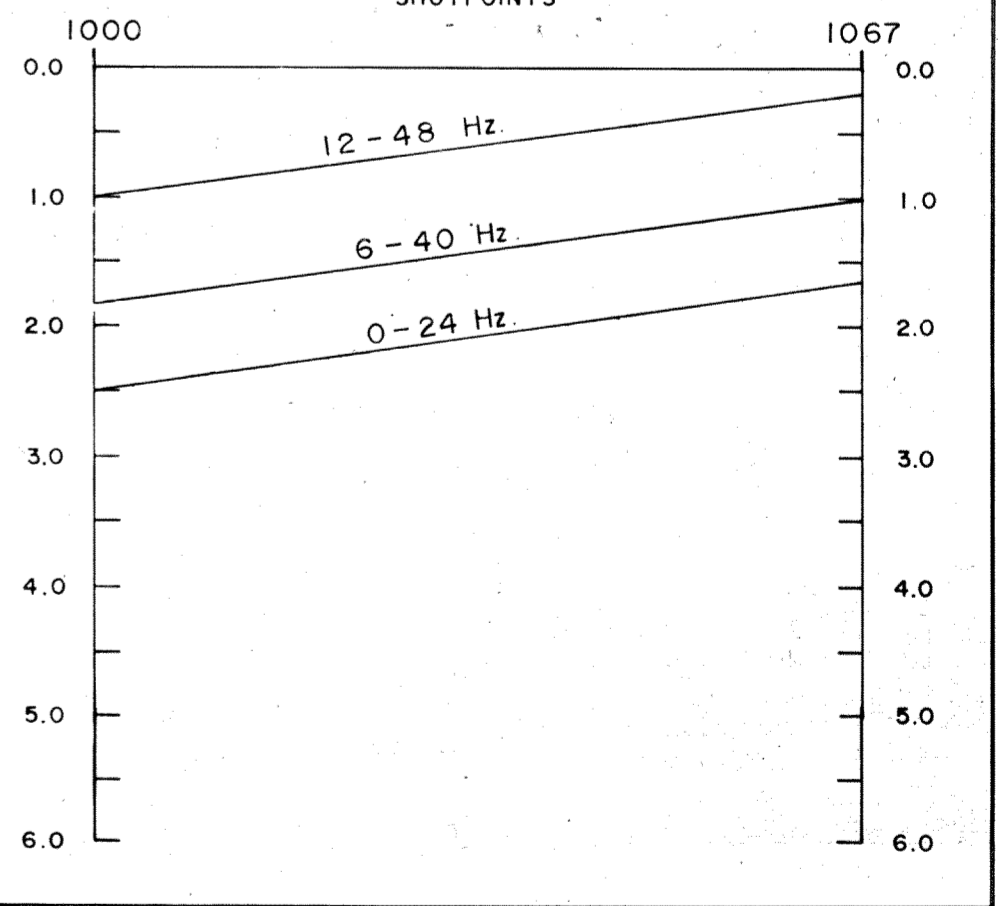
RECORDED BY SEISMO. SER. LTD. PARTY _____ DATE APR. / 74
ENERGY SOURCE TUNED AIRGUN ARRAY
SOURCE CONFIGURATION _____ SAMPLE RATE 4 ms
FIELD TAPE DFS III 9 TR. GAIN BINARY
RECORD LENGTH 6.0 sec SURVEY SYSTEM LORAN C, SATNAV
FILTER 8/18 - 62 Hz. DIRECTION SHOT NE
CABLE LENGTH 2350 m. CABLE DEPTH #1-49 #48-49
GROUP INTERVAL 50 m. GEOPHONE TYPE _____
OFFSET 280 m. OFF. I. GEOPHONES / TRACE _____
GUN DEPTH 10 m. GEOPHONE SPACING _____
FIRING INTERVAL 50 m. SP INTERVAL 50 m.
MULTIPLICITY 2400 %



DIGITAL PROCESSES

PROCESSED BY SEISCAN DELTA LTD. DATE JUNE / 74
1. EDIT SR 4 ms. DATUM SEA LEVEL
2. GAIN RECOVERY 8 STACK 2400% CDP
4. T/V DECON OPER 300 * ms MULTICHANNEL FILTER
20 ms PREDICTIVE SEIS/STACK
PRE-DECON FILTERS COH/OP
SHALLOW 6-56 Hz. SEIS/SCAN
DEEP 6-56 Hz.
POST DECON FILTERS 10 TRACE EQUALIZATION
SHALLOW 6-56 Hz. WINDOWS
DEEP 6-56 Hz.
3. CDP GATHERS 9 DIGITAL FILTER
5. VELOCITY SPECTRA 11 DISPLAY
6. NMO 16 TRACES/INCH
7. MUTING (SEE VERVELS) 3.75 INCHES/SECOND
PROCESSING RUN 1
REEL 1213
JOB 51699

SPACE & TIME VARIANT DIGITAL FILTER



REMARKS

* OPERATOR VARIES TO 240ms WITH WATER BOTTOM