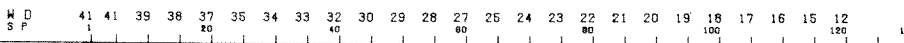


MARE TIRRENO  
 PERMESSO E.R 17 . AG  
 E.R 18 . AG

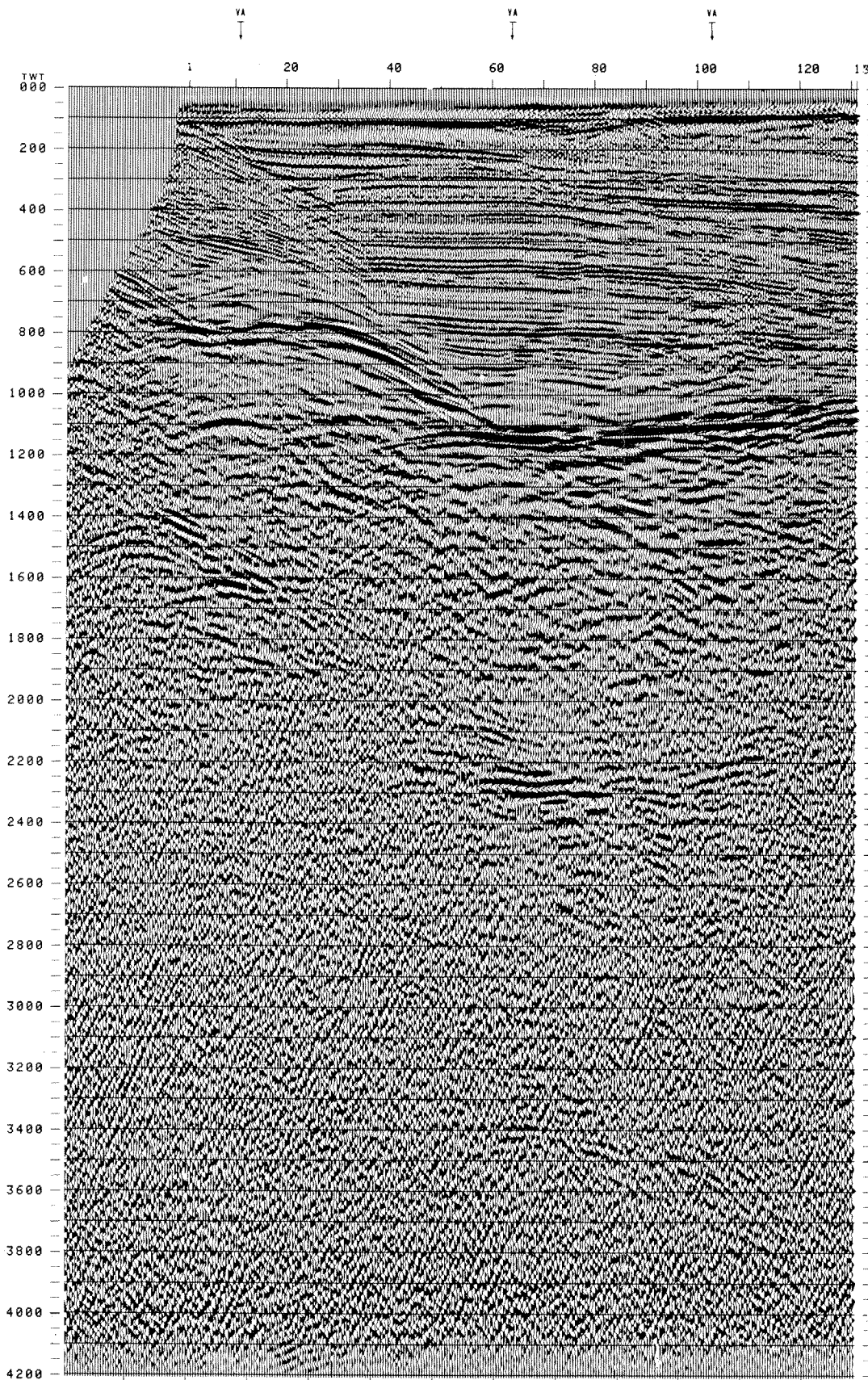
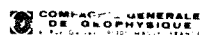
NW 1 LINEA ER.3028.77 131 SE

3028-77



FIELD RECORDING	
Ship : VERSEAU	Geophones type HC 201 n° 24/group
Field recorder : SN 338 filter 1-125.125	2400 % coverage
Floating point sampling 2 ms	Energy source VAPORCHOC (Depth 3 m)
Streamer 1150 m Depth 4 m	Positive acoustic pressure is a negative number on field tape
Groups 48(group interval 25 m)	SYLEDIS positioning
DIGITAL PROCESSING P5	
AMPLITUDE RECOVERY (Resampling 2 to 4 ms)	TIME VARIANT FILTER
WAPCO (Stabilization of Vaporchoc signal)	SPATIAL COHERENCE ENHANCEMENT (AMCO)
MUTE EDITING	TRACE EQUALIZATION
DECONVOLUTION 160 ms	ANALOG DISPLAY
Windows 250 - 1500 ms	
Windows 1500 - 3000 ms	
VELOCITY ANALYSIS (VA)	
RMO CORRECTIONS LINEAR INTERPOLATION	
BETWEEN VELOCITY FUNCTIONS	
STACK 2400 %	
BLACK PEAK REPRESENTS POSITIVE ACOUSTIC PRESSURE	
TIME ORIGIN Mean sea level	

FEB. 15 78



\*3028 \*  
 \*FROM SP\*FROM SP\*FROM SP\*  
 \* 1\* 64\* 102\*  
 \* TO SP \* TO SP \* TO SP \*  
 \* 22\* 64\* 131\*  
 \*\*\*\*\*  
 \*AV. VEL.\*AV. VEL.\*AV. VEL.\*  
 \* IN M/S\* IN M/S\* IN M/S\*

000			
200	1689	1639	1630
400	1847	1756	1757
600	1992	1847	1871
800	2134	1972	2005
1000	2386	2137	2150
1200	2553	2302	2283
1400	2722	2501	2409
1600	2875	2596	2549
1800	3089	2715	2697
2000	3286	2879	2864
2200	3487	3013	3046
2400	3655	3161	3230
2600	3747	3341	3405
2800	3918	3495	3554
3000	4024	3629	3684
3200	4116	3746	3798
3400	4197	3849	3898
3600	4270	3940	3987
3800	4334	4023	4066
4000	4393	4096	4138
4200	4445	4163	4203

