

Line No.

D

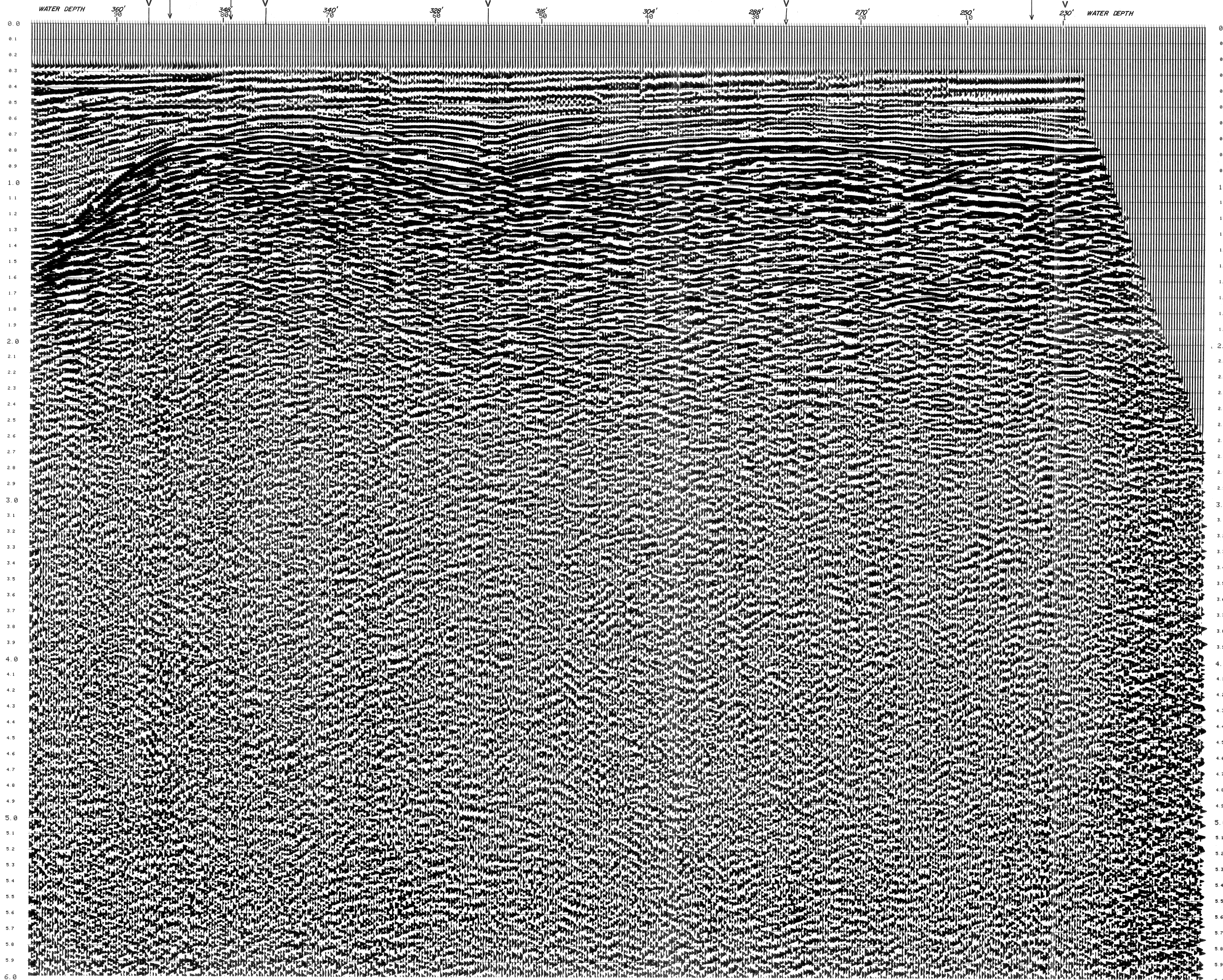
SP 1-98



Line 109-S-P 2391    Line 72-4 -SP 348

INTERSECTS  
LINE B  
AT S.P. 227

Line 101SR-SP1824



PROCESSED FOR \_\_\_\_\_ Line No. \_\_\_\_\_

**SIR** D

SOCIETA ITALIANA RESINE

DATE 5/30/75 SP 1-98

—Processed By—  
GEOPHYSICAL DATA PROCESSING CENTER, Inc.  
HOUSTON DATA CENTER  
SEI, S.A. & GDFC  
—Subsidiaries of—  
Whitehall Electronics Corporation

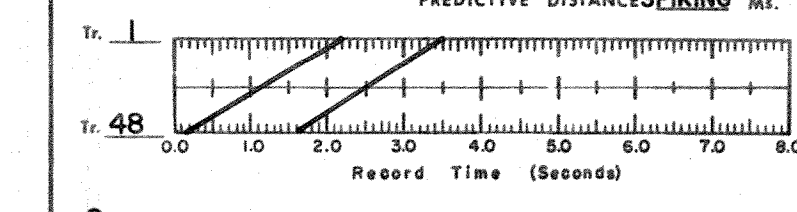
AREA GULF of GAETA  
LOCATION TYRRHENIAN SEA  
MOTOR VESSEL SEISMIC EXPLORER  
DATE RECORDED 12/74

**RECORDING INFORMATION**

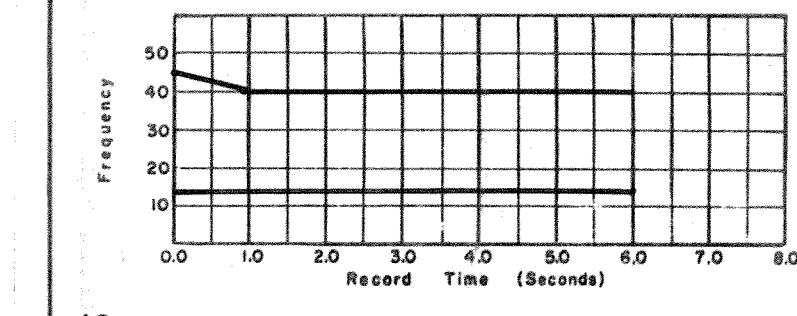
ENERGY SOURCE SLEEVE EXPLODERS  
TYPE CABLE \_\_\_\_\_ DEPTH 40'  
INSTRUMENTS DFS-III  
SAMPLE RATE 4 Ms. GAIN MODE BINARY  
FILTER: L.C. \_\_\_\_\_ Hz. SLOPE 18 dB/Oct.  
H.C. 62 Hz. SLOPE 72 dB/Oct.  
DIRECTION RECORDED SOUTH WEST  
SHOTPOINT INTERVAL 100m POP INT. 25m  
GROUP INTERVAL 50m GEO/GROUP 30

**PROCESSING SEQUENCE**

1. REFORMAT SAMPLE RATE 4 Ms.
2. BINARY GAIN RECOVERY
3. SUM 2 RECORDS INTO ONE
4. TRACE 48 SECTION DISPLAYED
5. AUTOMATIC VELOCITY DETERMINATION
6. CONSTANT VELOCITY SCANS
7. SINGLE COVERAGE DISPLAYED
8. COMMON DEPTH POINTS DISPLAYED
9. DECONVOLUTION: OPERATOR 160 Ms.  
PREDICTIVE DISTANCE SPKING Ms.



8. NMO CORRECTION  
9. MUTE  
10. STACK 24 FOLD  
DECON. AFTER STACK: OPERATOR \_\_\_\_\_ Ms.  
PREDICTIVE DISTANCE \_\_\_\_\_ Ms.  
GATES: 1. \_\_\_\_\_ Sec. 2. \_\_\_\_\_ Sec.  
3. \_\_\_\_\_ Sec. 4. \_\_\_\_\_ Sec.



12. TRACE EQUALIZATION  
POWER EQUALIZATION  
\* VARIES WITH WATER BOTTOM

**DISPLAY**  
VERTICAL SCALE 3.75 in./Sec.  
HORIZONTAL SCALE 16 Tr./in.  
GALVO \_\_\_\_\_, E.G. \_\_\_\_\_, F.S. \_\_\_\_\_, DISPLAY REEL # \_\_\_\_\_

