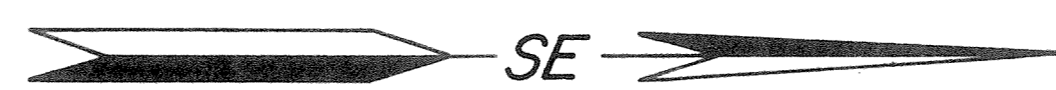


Line No.

A

SP I-123

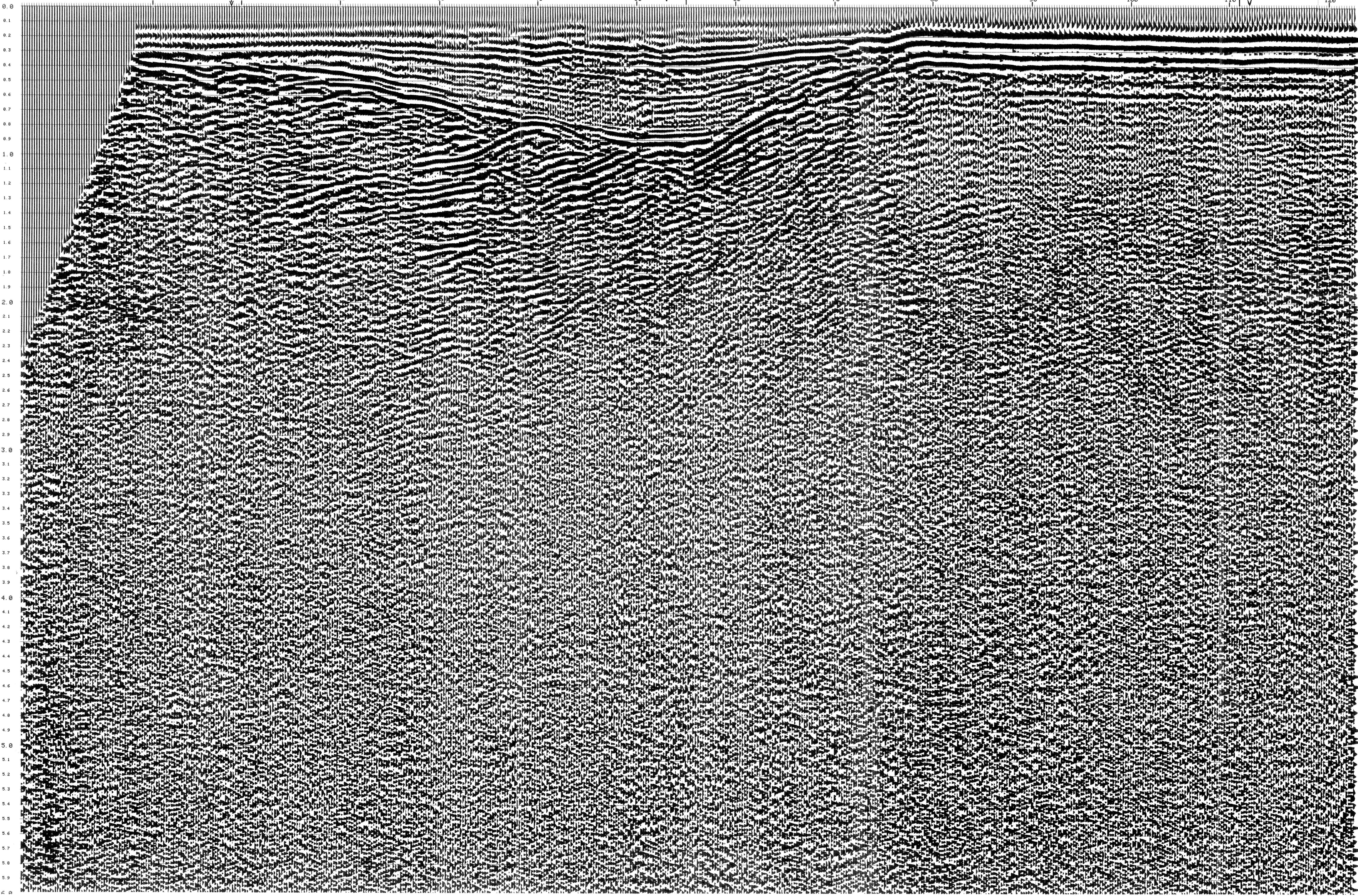


INTERSECTS
LINE E
AT S.P. 245

Line 190-SP 141

INTERSECTS
LINE F
AT S.P. 257

WATER DEPTH 23'



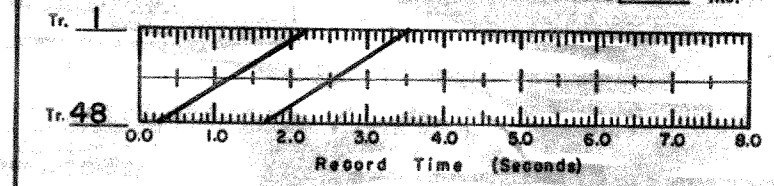
PROCESSED FOR Line No.
SIR
 SOCIETA ITALIANA RESINE **A**
 DATE 5/29/75 SP I-123

Processed By
 GEOPHYSICAL DATA PROCESSING CENTER, Inc.
 HOUSTON DATA CENTER
 SEI, S.A. & G.P.C.
 Subsidiaries of
 Whitehall Electronics Corporation

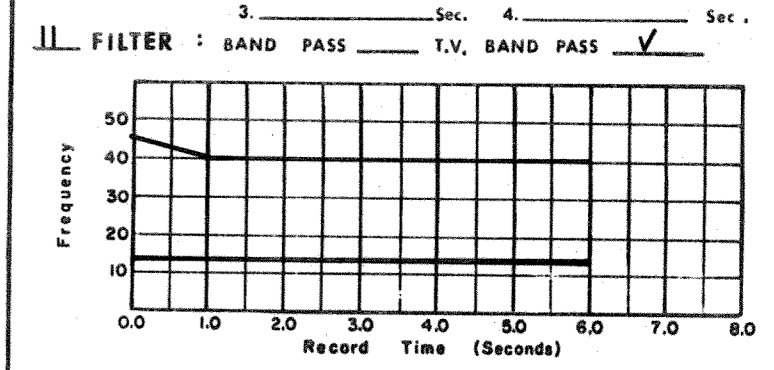
AREA GULF of GAETA
 LOCATION TYRRHENIAN SEA
 MOTOR VESSEL SEISMIC EXPLORER
 DATE RECORDED 12/74

RECORDING INFORMATION
 ENERGY SOURCE SLEEVE EXPLODERS
 TYPE CABLE _____ DEPTH 40'
 INSTRUMENTS DFS III
 SAMPLE RATE 4 ms. GAIN MODE BINARY
 FILTER: L.C. 8 ms. SLOPE 18 db/oct.
 H.C. 52 ms. SLOPE 12 db/oct.
 DIRECTION RECORDED SOUTH EAST
 SHOTPOINT INTERVAL 100 m. POP. INT. 25 m.
 GROUP INTERVAL 50 m. GEO/GROUP 30

PROCESSING SEQUENCE
 1. REFORMAT SAMPLE RATE 4 ms.
 2. BINARY GAIN RECOVERY
 3. SUM 2 RECORDS INTO ONE
 4. TRACE 48 SECTION DISPLAYED
 5. AUTOMATIC VELOCITY DETERMINATION
 6. CONSTANT VELOCITY SCANS
 7. SINGLE COVERAGE DISPLAYED
 8. COMMON DEPTH POINTS DISPLAYED
 9. DECONVOLUTION: OPERATOR 160 ms.
 PREDICTIVE DISTANCE SPRING ms.



8. NMO CORRECTION
 9. MUTE
 10. STACK 24 FOLD
 DECON. AFTER STACK: OPERATOR _____ ms.
 PREDICTIVE DISTANCE _____ ms.
 GATES: 1. _____ ms. Sec. 2. _____ ms.
 3. _____ ms. Sec. 4. _____ ms.



11. FILTER: BAND PASS 1.V. BAND PASS Y
 12. TRACE EQUALIZATION
 POWER EQUALIZATION
 VARIES WITH WATER BOTTOM

DISPLAY
 VERTICAL SCALE 375 in./sec.
 HORIZONTAL SCALE 16 Tr./in.
 GALVO _____, E.G. _____, F.G. _____, DISPLAY REEL #6

