

LINE: 149

LINE: 149

LINE: 149

LINE: 149

S.P. 012^D to S.P. 97

P. 103 to S.P. 211

P. 217 to S.P. 319^D

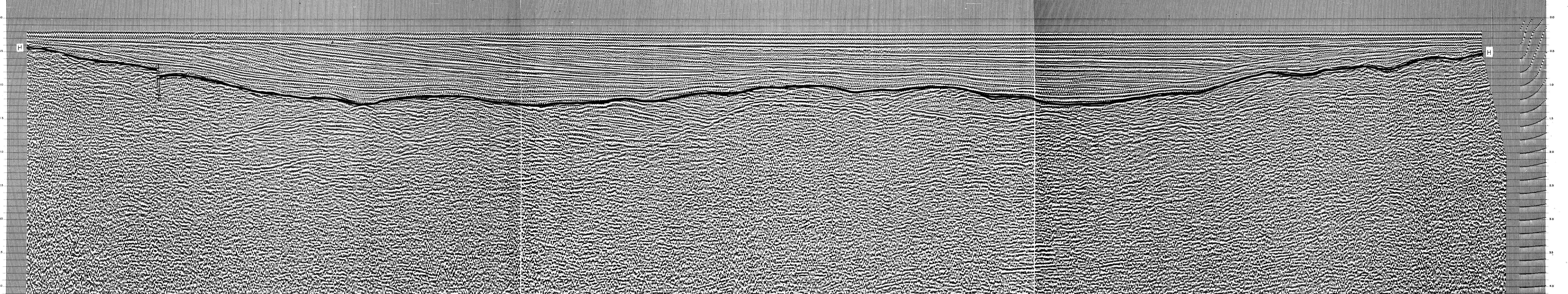
P. 217 to S.P. 319^D

DATUM PLANE : SEA LEVEL

INTERSECTION LINE S.P. 148 79, 19 80, 276 70, 278 81, 152 43, 282 64, 6014

M - ITMS 6015, 6013, 5069, 5068, 6014, 5022

WATER DEPTH IN METRES: 3, 109, 115, 121, 127, 133, 139, 145, 151, 157, 163, 169, 175, 181, 187, 193, 199, 205, 211, 217, 223, 229, 235, 241, 247, 253, 259, 265, 271, 277, 283, 289, 295, 301, 307, 313, 319



AGIP AREA: TYRRHENIAN SEA PROSPECT: ZONE "E"		WESTERN GEOPHYSICAL MILAN DIGITAL CENTER	
RECORDING DATA		PROCESSING INFORMATION	
PARTY NO. 82		SAMPLE RATE 4 Hz	
ENERGY SOURCE AQUAPULSE		1) EDIT - (SUM 3 POP) 2) DECONVOLVED BEFORE STACK	
FILTER 8-80 Hz		3) NORMAL MOVE OUT 4) 100% STACK	
CABLE 1600 m		5) TIME VARIANT FILTER 6) PLAYBACK (UNFILTERED) 7) VELOCITY ANALYSIS	
GEOPHONES 32 CRYSTAL ELEMENT TAPERED ARRAY		REEL NO. 76863	
LEAD IN 715		DATE JULY 1982	
AMPLIFIER RECORD BINARY GAIN		TIME ZONE HZ 48 OCT HZ 48 OCT	
CHARGE SIZE 4.500 mV		AUTO CORR. INT. TIME VARIANT	
DATE SHOT APRIL 1982		MAX APERTURE 0.400 m	
		TIME ZONE HZ 48 OCT HZ 48 OCT	
		ITERATIONS 2	

AGIP AREA: TYRRHENIAN SEA PROSPECT: ZONE "E"		WESTERN GEOPHYSICAL MILAN DIGITAL CENTER	
RECORDING DATA		PROCESSING INFORMATION	
PARTY NO. 82		SAMPLE RATE 4 Hz	
ENERGY SOURCE AQUAPULSE		1) EDIT - (SUM 3 POP) 2) DECONVOLVED BEFORE STACK	
FILTER 8-80 Hz		3) NORMAL MOVE OUT 4) 100% STACK	
CABLE 1600 m		5) TIME VARIANT FILTER 6) PLAYBACK (UNFILTERED) 7) VELOCITY ANALYSIS	
GEOPHONES 32 CRYSTAL ELEMENT TAPERED ARRAY		REEL NO. 76863	
LEAD IN 715		DATE JULY 1982	
AMPLIFIER RECORD BINARY GAIN		TIME ZONE HZ 48 OCT HZ 48 OCT	
CHARGE SIZE 4.500 mV		AUTO CORR. INT. TIME VARIANT	
DATE SHOT APRIL 1982		MAX APERTURE 0.400 m	
		TIME ZONE HZ 48 OCT HZ 48 OCT	
		ITERATIONS 2	

AGIP AREA: TYRRHENIAN SEA PROSPECT: ZONE "E"		WESTERN GEOPHYSICAL MILAN DIGITAL CENTER	
RECORDING DATA		PROCESSING INFORMATION	
PARTY NO. 82		SAMPLE RATE 4 Hz	
ENERGY SOURCE AQUAPULSE		1) EDIT - (SUM 3 POP) 2) DECONVOLVED BEFORE STACK	
FILTER 8-80 Hz		3) NORMAL MOVE OUT 4) 100% STACK	
CABLE 1600 m		5) TIME VARIANT FILTER 6) PLAYBACK (UNFILTERED) 7) VELOCITY ANALYSIS	
GEOPHONES 32 CRYSTAL ELEMENT TAPERED ARRAY		REEL NO. 76863	
LEAD IN 715		DATE JULY 1982	
AMPLIFIER RECORD BINARY GAIN		TIME ZONE HZ 48 OCT HZ 48 OCT	
CHARGE SIZE 4.500 mV		AUTO CORR. INT. TIME VARIANT	
DATE SHOT APRIL 1982		MAX APERTURE 0.400 m	
		TIME ZONE HZ 48 OCT HZ 48 OCT	
		ITERATIONS 2	

E.R.4.AG

NORTHWEST