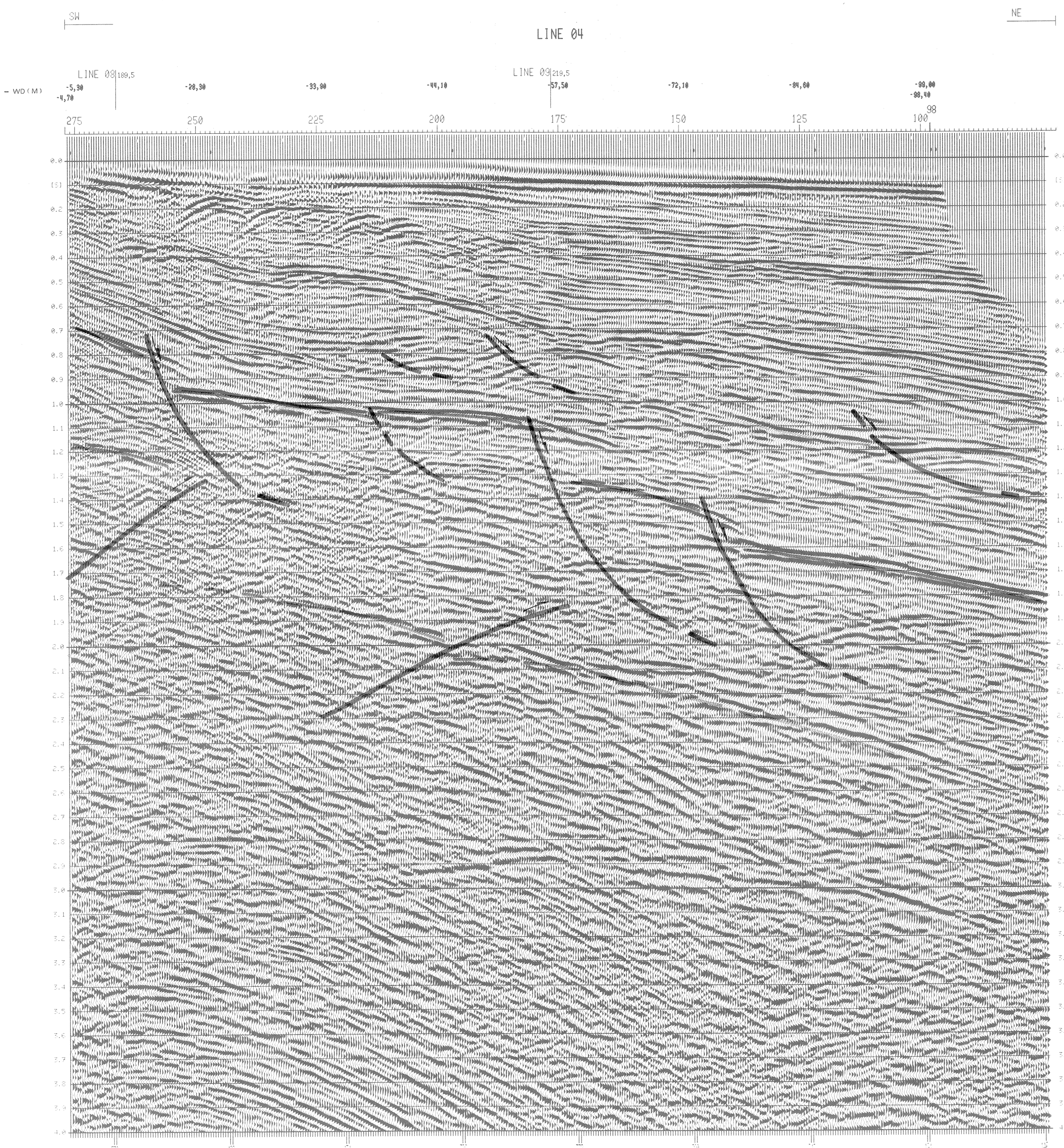


V7		V6		V5		V4		V3		V2		V1	
(S)	(KM/S)	(S)	(KM/S)	(S)	(KM/S)	(S)	(KM/S)	(S)	(KM/S)	(S)	(KM/S)	(S)	(KM/S)
T0	YS	T0	YS	T0	YS	T0	YS	T0	YS	T0	YS	T0	YS
0.000	1.450	0.000	1.450	0.000	1.450	0.100	1.450	0.120	1.450	0.130	1.450	0.180	1.450
0.200	1.670	0.200	1.670	0.200	1.480	0.200	1.520	0.200	1.500	0.200	1.461	0.200	1.460
0.300	1.830	0.300	1.830	0.300	1.550	0.300	1.580	0.300	1.540	0.300	1.482	0.300	1.480
0.400	1.950	0.400	1.950	0.400	1.650	0.400	1.680	0.400	1.652	0.400	1.582	0.400	1.580
0.500	2.030	0.500	2.030	0.500	1.720	0.500	1.770	0.500	1.725	0.500	1.706	0.500	1.680
0.600	2.120	0.600	2.120	0.600	1.870	0.600	1.930	0.600	1.790	0.600	1.751	0.600	1.750
0.700	2.200	0.700	2.200	0.700	1.930	0.700	1.970	0.700	1.825	0.700	1.781	0.700	1.780
0.800	2.250	0.800	2.250	0.800	1.990	0.800	1.990	0.800	1.850	0.800	1.802	0.800	1.800
0.900	2.270	0.900	2.270	0.900	2.020	0.900	1.950	0.900	1.895	0.900	1.842	0.900	1.840
1.000	2.300	1.000	2.300	1.000	2.060	1.000	1.980	1.000	1.925	1.000	1.872	1.000	1.870
1.200	2.350	1.200	2.350	1.200	2.180	1.200	2.070	1.200	2.035	1.200	2.001	1.200	2.000
1.400	2.430	1.400	2.430	1.400	2.300	1.400	2.150	1.400	2.115	1.400	2.081	1.400	2.080
1.600	2.550	1.600	2.550	1.600	2.400	1.600	2.230	1.600	2.200	1.600	2.171	1.600	2.170
1.800	2.660	1.800	2.660	1.800	2.500	1.800	2.300	1.800	2.290	1.800	2.222	1.800	2.220
2.000	2.770	2.000	2.770	2.000	2.630	2.000	2.550	2.000	2.425	2.000	2.305	2.000	2.300
2.500	3.050	2.500	3.050	2.500	3.000	2.500	3.100	2.500	2.800	2.500	2.512	2.500	2.500
3.000	3.350	3.000	3.350	3.000	3.290	3.000	3.300	3.000	3.330	3.000	3.070	3.000	3.060
3.500	3.640	3.500	3.640	3.500	3.580	3.500	3.670	3.500	3.735	3.500	3.605	3.500	3.600
4.000	3.920	4.000	3.920	4.000	3.880	4.000	4.270	4.000	4.145	4.000	4.025	4.000	4.020
4.500	4.200	4.500	4.200	4.500	4.200	4.500	4.500	4.500	4.400	4.500	4.304	4.500	4.300
5.000	4.500	5.000	4.500	5.000	4.500	5.000	4.670	5.000	4.600	5.000	4.532	5.000	4.530



RECORDING PARAMETERS

CONTRACTOR: PRAKTA-SEISMOS AG
 FIELD PARTY: SV INHATA
 RECORDING PERIOD: MARCH 1986

INSTRUMENT TYPE: DFS V (NDH) (P)
 TAPE FORMAT: SEC-B, 9-TRACK, 1000 BPI
 GAIN CONSTANT: 24 DB
 SAMPLING RATE: 2 MS
 FILTER: LOWCUT: 8 HZ, 18 DB/OCT
 HIGHCUT: 128 HZ, 70 DB/OCT

FIELD SYSTEM:
 INSTRUMENT TYPE: DFS V (NDH) (P)
 TAPE FORMAT: SEC-B, 9-TRACK, 1000 BPI
 GAIN CONSTANT: 24 DB
 SAMPLING RATE: 2 MS
 FILTER: LOWCUT: 8 HZ, 18 DB/OCT
 HIGHCUT: 128 HZ, 70 DB/OCT

RECEIVER: TYPE HYDROPHONE MULTIDOME HD 5
 GROUP LENGTH: 22 M
 RECEIVERS PER GROUP: 32

ENERGY: AIR-GUN
 GUN DEPTH: 3 M (WV)
 POP INTERVAL: 25 M
 VOLUME: 12-38 L

COVERAGES: 24-FOLD
 ERITTER RECEIVER CONFIGURATION:

EMITTER: POP
 TRIGGER: 150 M (48)
 CDP LOCATION

SURVEY DIRECTION

PROCESSING SEQUENCE

1. INPUT: TAPE FORMAT SEC-B, 9-TRACK, 1000 BPI
 TRAVEL TIME: 4.0 S
 LOWCUT: 14 HZ DB/OCT
 HIGHCUT: 90 HZ 45 DB/OCT

2. DEMULTIPLEXING

3. RESAMPLING FROM 2 MS TO 4 MS (ANTI-ALIAS FILTER: 100 HZ)

4. GAIN REMOVAL

5. FREQUENCY FILTER:
 TRAVEL TIME: 4.0 S
 LOWCUT: 14 HZ DB/OCT
 HIGHCUT: 90 HZ 45 DB/OCT

6. PI-FILTER ON SOURCE GATHER
 (PHAS FROM -8 MS TRACE TO +8 MS TRACE)

7. SPHERICAL DIVERGENCE CORRECTION

8. DELAY CORRECTION: -10 MS

9. DECONVOLUTION: TYPE FREQUENCY, 1 GATE DISTANCE DEPENDENT
 DISTANCE: 0 M
 150 - 2500 MS
 2000 - 2500 MS
 OPERATOR LENGTH: 30 MS
 PREDICTION INTERVAL: 15 MS

10. DYNAMIC CORRECTION
 (DERIVED FROM VELOCITY ANALYSES AND SINGLE COVERAGE)

11. AMPLITUDE LEVEL TUNING

12. HORIZONTAL STACK: 24-FOLD

13. RESIDUAL AMPLITUDE DECAY CORRECTION

14. FREQUENCY FILTER: TIME VARYING
 TRAVEL TIME: 4.0 S
 LOWCUT: 20 HZ 45 DB/OCT
 HIGHCUT: 90 HZ 45 DB/OCT

15. AUTOMATIC GAIN CONTROL

16. DISPLAY: HORIZONTAL SCALE: 1 : 10 500
 TRACE SPACING: 1.140 M
 VERTICAL SCALE: 1 : 1.5 = 10 CM
 POLARITY: POSITIVE NUMBERS = BLACK

*4886/03/86 DATE: 25.03.1986

SELM S.P.A. - SOCIETA ENERGIA MONTEDISON S.P.A.

ALL.6

DR 69 LINE 04

24-FOLD STACK

1:12 500

851 633

PRAKTA-SEISMOS