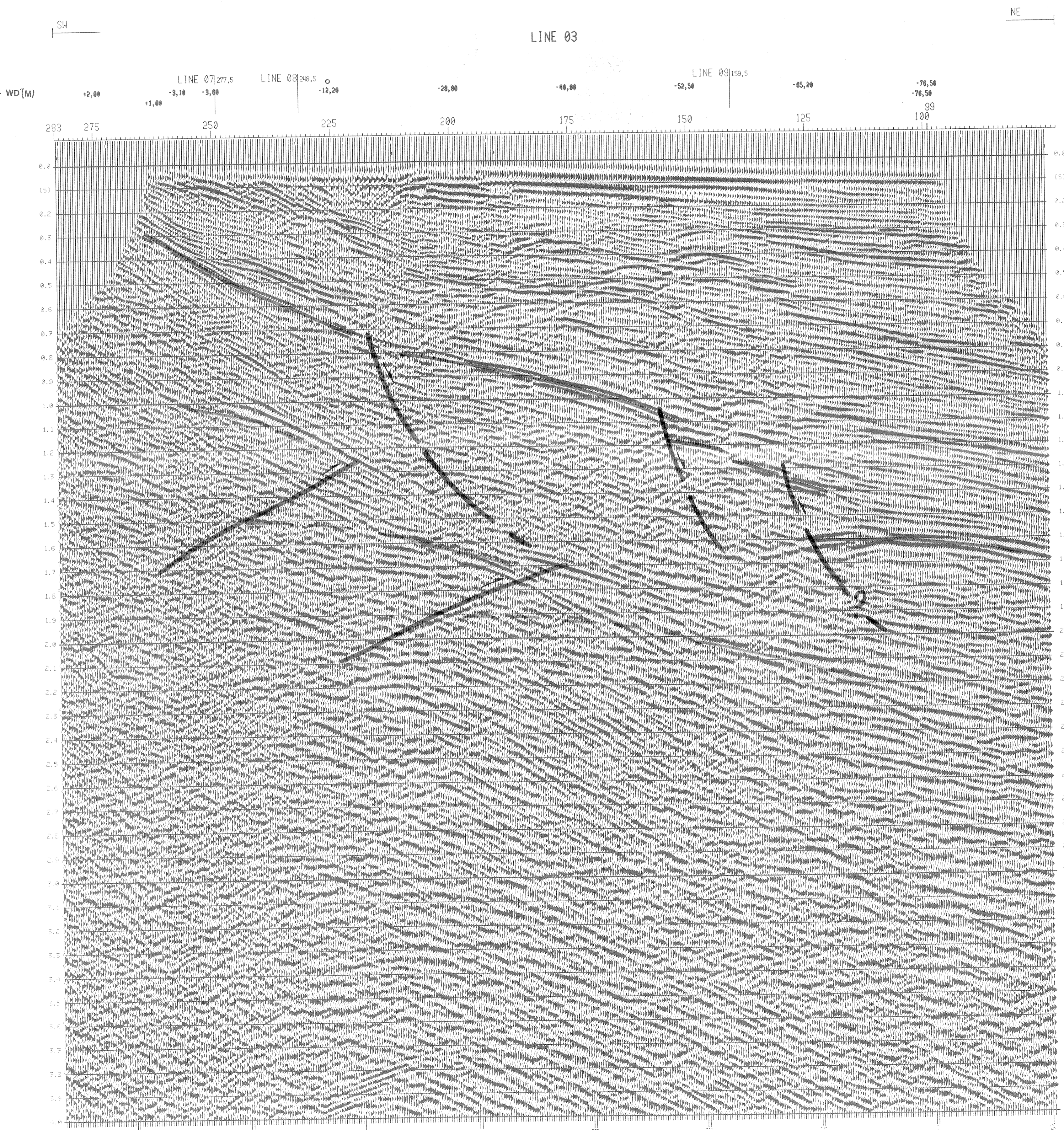
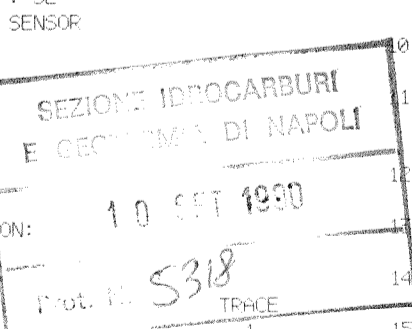


V7		V6		V5		V4		V3		V2		V1	
(S)	(KM/S)	(S)	(KM/S)	(S)	(KM/S)	(S)	(KM/S)	(S)	(KM/S)	(S)	(KM/S)	(S)	(KM/S)
T0	YS	T0	YS	T0	YS	T0	YS	T0	YS	T0	YS	T0	YS
0.100	1.000	0.100	1.000	0.100	1.050	0.100	1.450	0.100	1.450	0.100	1.450	0.100	1.450
0.200	1.300	0.200	1.300	0.200	1.815	0.200	1.500	0.200	1.500	0.200	1.500	0.200	1.500
0.300	1.600	0.300	1.600	0.300	1.980	0.300	1.630	0.300	1.590	0.300	1.600	0.300	1.600
0.400	2.200	0.400	2.200	0.400	2.050	0.400	1.750	0.400	1.700	0.400	1.700	0.400	1.700
0.500	2.300	0.500	2.300	0.500	2.140	0.500	1.850	0.500	1.820	0.500	1.730	0.500	1.730
0.600	2.390	0.600	2.390	0.600	2.250	0.600	1.900	0.600	1.900	0.600	1.770	0.600	1.770
0.700	2.550	0.700	2.550	0.700	2.365	0.700	1.950	0.700	1.820	0.700	1.820	0.700	1.820
0.800	2.700	0.800	2.700	0.800	2.470	0.800	2.000	0.800	1.880	0.800	1.880	0.800	1.880
0.900	2.820	0.900	2.820	0.900	2.590	0.900	2.100	0.900	2.110	0.900	1.930	0.900	1.930
1.000	2.900	1.000	2.900	1.000	2.670	1.000	2.270	1.000	2.100	1.000	1.960	1.000	1.960
1.200	3.120	1.200	3.120	1.200	2.870	1.200	2.400	1.200	2.400	1.200	2.060	1.200	2.060
1.400	3.350	1.400	3.350	1.400	3.050	1.400	2.500	1.400	2.500	1.400	2.170	1.400	2.170
1.600	3.500	1.600	3.500	1.600	3.250	1.600	2.650	1.600	2.700	1.600	2.300	1.600	2.300
1.800	3.750	1.800	3.750	1.800	3.450	1.800	2.830	1.800	2.850	1.800	2.500	1.800	2.500
2.000	3.900	2.000	3.900	2.000	3.600	2.000	3.000	2.000	3.000	2.000	2.650	2.000	2.650
2.500	4.200	2.500	4.200	2.500	3.900	2.500	3.350	2.500	3.360	2.500	3.050	2.500	3.050
3.000	4.500	3.000	4.500	3.000	4.100	3.000	3.650	3.000	3.660	3.000	3.390	3.000	3.390
3.500	4.800	3.500	4.800	3.500	4.400	3.500	3.850	3.500	3.860	3.500	3.650	3.500	3.650
4.000	5.000	4.000	5.000	4.000	4.650	4.000	4.050	4.000	4.060	4.000	3.850	4.000	3.850
5.000	5.200	5.000	5.200	5.000	4.900	5.000	4.300	5.000	4.300	5.000	4.150	5.000	4.150



RECORDING PARAMETERS	PROCESSING SEQUENCE
<p>CONTRACTOR: PRAKLA-SEISMOS AG</p> <p>FIELD PARTY: SV MANTA</p> <p>RECORDING PERIOD: MARCH, 1988</p> <p>FIELD SYSTEM:            INSTRUMENT TYP: DFS V (MDH 17)            TAPE FORMAT: SEG-B, 9-TRACK, 1600 BPI            GAIN CONSTANT: 24 DB            SAMPLING RATE: 2 MS            FILTER: LOOCUT: 8 HZ, 18 DB/OCT            HIGHCUT: 128 HZ, 70 DB/OCT</p> <p>POLARITY: COMPRESSIONAL EVENTS = NEGATIVE NUMBERS</p> <p>RECORD LENGTH: 5 S</p> <p>CABLE: STREAMER TYPE HSN 4 RTD            LENGTH 1200 M, DEPTH 3 M - 5 M            NUMBER OF GROUPS: 48, SPACING: 25 M</p> <p>RECEIVER: TYPE HYDROPHONE MULTIDINE HD 5            GROUP LENGTH: 22 M            RECEIVERS PER GROUP: 32            TYPE GEOPHONE SM 4 SENSOR</p> <p>ENERGY: AIRGUN            GUN DEPTH: 3 M MAX            POP INTERVAL: 25            VOLUME: 12-88 L</p> <p>COVERAGE: 24-FOLD</p> <p>EMITTER RECEIVER CONFIGURATION:</p> <p>ANT POP TRACE            ( 50 M ) ( 150 M ) ( 48 )</p> <p>CDP LOCATION</p> <p>SUR-----WORK DIRECTION-----LINE</p> <p>STATION NO 48 - NO 244 = STREAMER            STATION NO 215 - NO 268 = BAYCABLE SPREAD            STATION NO 261 - NO 394 = LANDCABLE SPREAD</p>	<p>SUPERVISOR: DIPL.GEOL.N.ORDOUSKI / DIPL.MIN.F.MUTHOLIE            INPUT CREW: DIPL.GEOL.F.WALTHER            DC-CONTRACT-NO.: 851 633 95</p> <p>1 INPUT: TAPE FORMAT SEG-B, 9-TRACK, 1600 BPI            SAMPLING RATE 2 MS, 48 TRACES, 5 S OUTPUT: 4 S</p> <p>2 DEMULTIPLEXING</p> <p>3 RESAMPLING FROM 2 MS TO 4 MS (ANTI-ALIAS FILTER: 100 HZ)</p> <p>4 GAIN REMOVAL</p> <p>5 FREQUENCY FILTER:            TRAVEL TIME LOOCUT HIGHCUT            4.0 S 14 HZ DB/OCT 90 HZ 48 DB/OCT</p> <p>6 FK-FILTER ON SOURCE GATHER            ( PHAS FROM -8 MS TRACE TO 48 MS TRACE )</p> <p>7 DELAY CORRECTION:            STREAMER: -10 MS, BAYCABLE: -74 MS, LANDCABLE: -74 MS</p> <p>8 PHASE SHIFT 90 FOR LANDCABLE SPREAD</p> <p>9 DECONVOLUTION: TYPE PREDICTION, 1 GATE DISTANCE DEPENDENT            DISTANCE: 0 M 150 - 3500 MS 900 - 3500 MS            OPERATOR LENGTH: 80 MS, PREDICTION INTERVAL: 16 MS</p> <p>10 STATIC CORRECTIONS TO SEALEVEL ( LANDCABLE )            ( CORRECTION VELOCITY: 2100 M/S )</p> <p>11 DYNAMIC CORRECTION            ( DERIVED FROM VELOCITY ANALYSES )</p> <p>12 AUTOMATIC STATIC RESIDUALS: SURFACE CONSISTENT ( ASTH )</p> <p>13 AUTOMATIC GAIN CONTROL ( GATE LENGTH: 3200 MS )</p> <p>14 HORIZONTAL STACK: 24-FOLD</p> <p>15 FREQUENCY FILTER: TIME VARYING            TRAVEL TIME LOOCUT HIGHCUT            4.0 S 20 HZ 48 DB/OCT 90 HZ 48 DB/OCT            4.0 S 14 HZ 48 DB/OCT 46 HZ 48 DB/OCT</p> <p>16 AUTOMATIC GAIN CONTROL ( GATE LENGTH: 300 MS )</p> <p>17 DISPLAY: HORIZONTAL SCALE: 1 : 12 500            TRACE SPACING : 1.0 MS            VERTICAL SCALE : 1 S = 10 CM            POLARITY: POSITIVE NUMBERS = BLACK</p>



SEZIONE IDROCARBURI  
E GEOTERMIA DI NAPOLI

10 OCT 1988

TRAC. 5318

SELM S.P.A. - SOCIETA ENERGIA MONTEDISON S.P.A.	ALL.5	1:12 500	851 633
	DR 63 LINE 03		PRAKLA-SEISMOS

24-FOLD STACK