

V7	
(S)	(KM/S)
T0	YS
0.100	1.740
0.200	1.800
0.300	2.015
0.400	2.240
0.500	2.340
0.600	2.450
0.700	2.520
0.800	2.580
0.900	2.640
1.000	2.680
1.200	2.830
1.400	3.000
1.600	3.470
1.800	3.660
2.000	3.835
2.500	4.160
3.000	4.440
3.500	4.680
4.000	4.960
5.000	5.590

V6	
(S)	(KM/S)
T0	YS
0.100	1.500
0.200	1.650
0.300	1.840
0.400	2.060
0.500	2.150
0.600	2.240
0.700	2.310
0.800	2.380
0.900	2.440
1.000	2.480
1.200	2.830
1.400	3.000
1.600	3.200
1.800	3.380
2.000	3.540
2.500	3.840
3.000	4.100
3.500	4.320
4.000	4.580
5.000	5.160

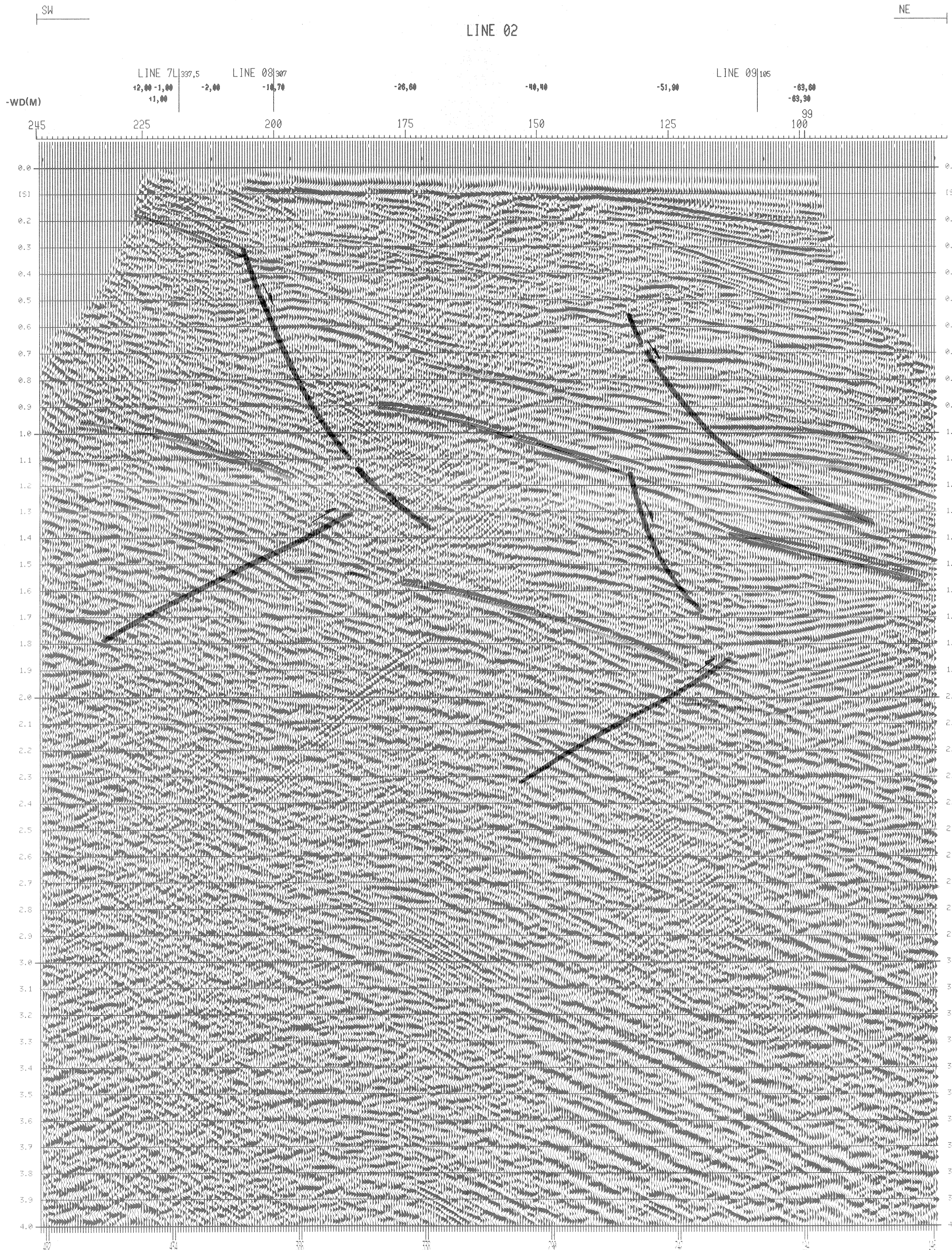
V5	
(S)	(KM/S)
T0	YS
0.100	1.520
0.200	1.575
0.300	1.785
0.400	1.940
0.500	1.950
0.600	2.020
0.700	2.100
0.800	2.150
0.900	2.200
1.000	2.230
1.200	2.400
1.400	2.875
1.600	3.200
1.800	3.380
2.000	3.540
2.500	3.840
3.000	4.100
3.500	4.320
4.000	4.580
5.000	5.160

V4	
(S)	(KM/S)
T0	YS
0.100	1.450
0.200	1.500
0.300	1.600
0.400	1.670
0.500	1.650
0.600	2.040
0.700	2.100
0.800	2.150
0.900	2.200
1.000	2.230
1.200	2.300
1.400	2.500
1.600	2.670
1.800	2.820
2.000	2.950
2.500	3.200
3.000	3.420
3.500	3.600
4.000	3.820
5.000	4.300

V3	
(S)	(KM/S)
T0	YS
0.100	1.450
0.200	1.520
0.300	1.630
0.400	1.770
0.500	1.900
0.600	1.970
0.700	2.030
0.800	2.080
0.900	2.130
1.000	2.190
1.200	2.320
1.400	2.450
1.600	2.610
1.800	2.750
2.000	2.880
2.500	3.140
3.000	3.360
3.500	3.570
4.000	3.800
5.000	4.100

V2	
(S)	(KM/S)
T0	YS
0.100	1.450
0.200	1.460
0.300	1.400
0.400	1.500
0.500	1.600
0.600	1.750
0.700	1.780
0.800	1.800
0.900	1.800
1.000	1.870
1.200	2.000
1.400	2.080
1.600	2.170
1.800	2.220
2.000	2.300
2.500	2.500
3.000	3.060
3.500	3.600
4.000	4.020
5.000	4.300

V1	
(S)	(KM/S)
T0	YS
0.100	1.450
0.200	1.475
0.300	1.550
0.400	1.620
0.500	1.670
0.600	1.750
0.700	1.850
0.800	1.950
0.900	2.030
1.000	2.100
1.200	2.250
1.400	2.400
1.600	2.540
1.800	2.670
2.000	2.780
2.500	3.040
3.000	3.270
3.500	3.520
4.000	3.750
5.000	4.100



RECORDING PARAMETERS

CONTRACTOR: PRAKIA-SEISMOS AG
 FIELD PARTY: SV MANTA
 RECORDING PERIOD: MARCH, 1986

FIELD SYSTEM:
 INSTRUMENT TYPE: DFS V (NIM 17)
 TAPE FORMAT: SEC-B, 9-TRACE, 1600 BPI
 GAIN CONSTANT: 24 DB
 SAMPLING RATE: 2 MS
 FILTER: LOOCUT: 8 HZ, 18 DB/OCT
 HIGH CUT: 128 HZ, 70 DB/OCT

POLARITY: COMPRESSIONAL EVENTS = NEGATIVE NUMBERS

RECORD LENGTH: 5 S

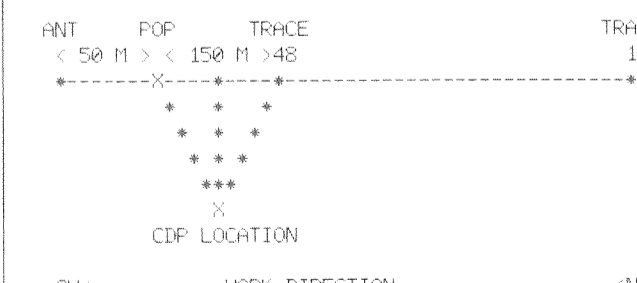
CABLE: STREHNER TYPE HSN 4 RTD
 LENGTH 1200 M, DEPTH 3 M - 5 M
 NUMBER OF GROUPS: 48, SPACING: 25 M

RECEIVER: TYPE HYDROPHONE MULTIDINE MD 5
 GROUP LENGTH: 22 M
 RECEIVERS PER GROUP: 32
 TYPE GEOPHONE SM 4 SENSORS

ENERGY: AIRGUNS
 GUN DEPTH: 3 M MAX.
 POP. INTERVALL: 25 M
 VOLUME: 12/88 L

COVERAGE: 24-FOLD

EMITTER RECEIVER CONFIGURATION:



STATION NO 48 - NO 214 = STREHNER
 STATION NO 174 - NO 221 = BAYBLEBLE SPREAD
 STATION NO 222 - NO 285 = LANDCABLE SPREAD

PROCESSING SEQUENCE

SUPERVISOR: DIPL.GEOL.N.ORDOUSKI / DIPL.MIN.F.MURTHADIE
 INPUT CREW: DIPL.GEOL.R.UHLTHER
 DC-CONTRACT-NO.: 851 633 55

1 INPUT: TAPE FORMAT SEC-B, 9-TRACE, 1600 BPI
 SAMPLING RATE 2 MS, 48 TRACES, 5 S, OUTPUT: 4 S

2 DEMULTIPLEXING

3 RESAMPLING FROM 2 MS TO 4 MS (ANTI-ALIAS FILTER: 100 HZ)

4 GAIN REMOVAL

5 FREQUENCY FILTER:
 TRAVEL TIME: LOOCUT: HIGH CUT:
 4.0 S 14 HZ DB/OCT 90 HZ 48 DB/OCT

6 FK-FILTER ON SOURCE GATHER
 (PASS FROM -8 MS/TRACE TO +8 MS/TRACE)

7 DELAY CORRECTION:
 STREHNER: -10 MS, BAYBLEBLE: -74 MS, LANDCABLE: -74 MS

8 PHASE SHIFT 90 FOR LANDCABLE SPREAD

9 DECONVOLUTION: TYPE PREDICTION, 1 GATE DISTANCE DEPENDENT
 DISTANCE: 0 M 150 - 3500 MS 300 - 2500 MS
 OPERATOR LENGTH: 80 MS, PREDICTION INTERVAL: 16 MS

10 STATIC CORRECTIONS TO SELEVEL (LANDCABLE)
 (CORRECTION VELOCITY: 2100 M/S)

11 DYNAMIC CORRECTION
 (DERIVED FROM VELOCITY ANALYSES)

12 AUTOMATIC STATIC RESIDUALS: SURFACE CONSISTENT (ASTA)

13 AUTOMATIC GAIN CONTROL (GATE LENGTH: 3200 MS)

14 HORIZONTAL STACK: 24-FOLD

15 FREQUENCY FILTER: TIME VARYING
 TRAVEL TIME: LOOCUT: HIGH CUT:
 0.0 S 20 HZ 48 DB/OCT 30 HZ 48 DB/OCT
 4.0 S 14 HZ 48 DB/OCT 46 HZ 48 DB/OCT

16 AUTOMATIC GAIN CONTROL (GATE LENGTH: 300 MS)

17 DISPLAY: HORIZONTAL SCALE: 1 : 12 500
 TRACE SPACING: 1.0 MS
 VERTICAL SCALE: 1 S = 10 CM
 POLARITY: POSITIVE NUMBERS = BLACK

SEZIONE IDROCARBURI
 E GEOTERMIA DI NAPOLI
 10 SET 1986
 Prot. N. 5318



4141/18/1986 DATE: 09.10.1986

SELM S.P.A. - SOCIETA' ENERGIA MONTEDISON S.P.A.	ALL.4	1:12 500	851 633
	DR 69 LINE 02		24-FOLD STACK

