

LINE: D.R67-06

SP 510 TO SP 101

NORTHWEST

4000% DBS, DMO, MIG, TVF.

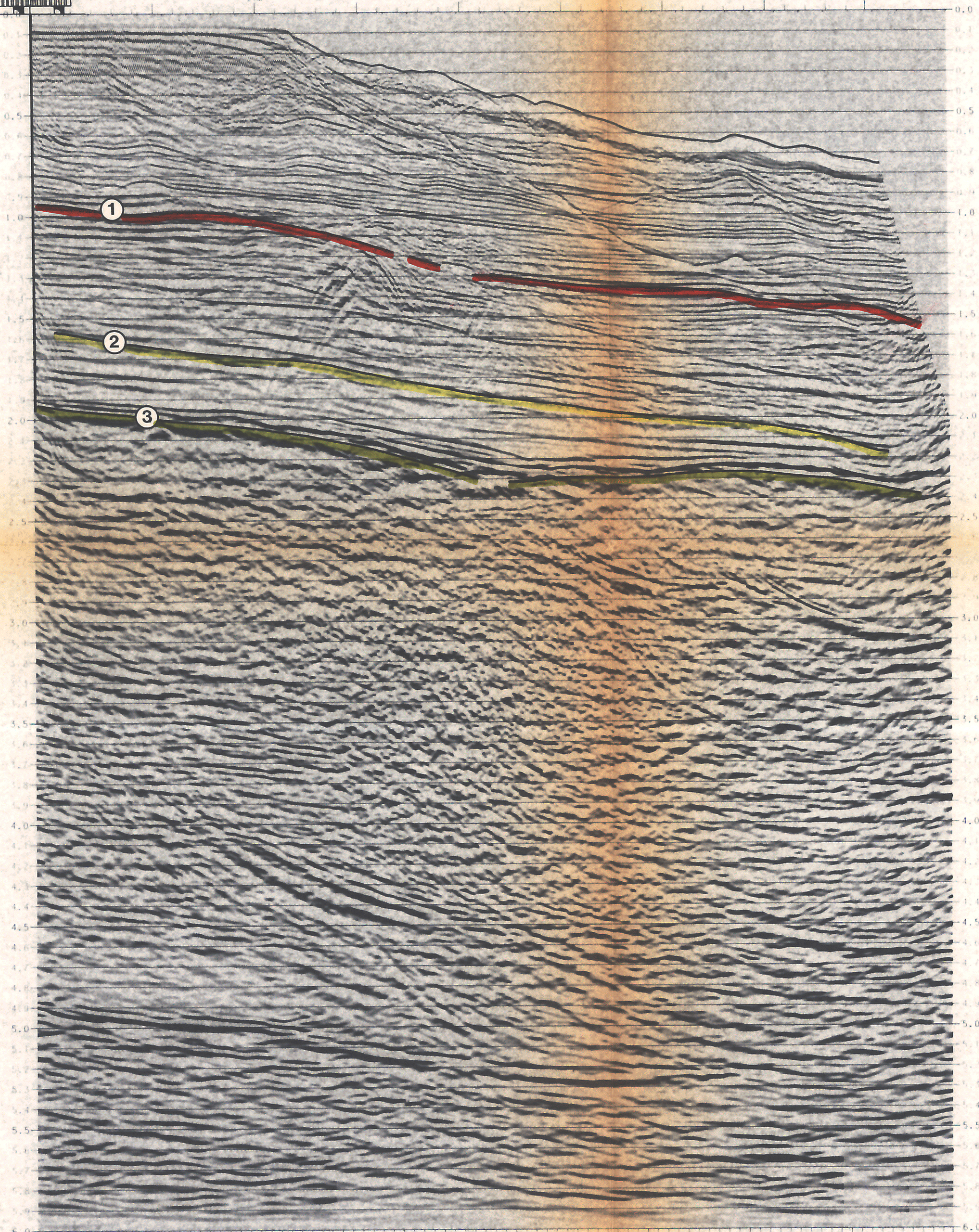
SP	TIME	DEPTH	VELOCITY	ANALYSIS	DATA	TIME	DEPTH	VELOCITY	ANALYSIS	DATA
510	0.00	0.00	1500	DMO	0.00	450	0.00	1500	DMO	0.00
511	0.05	0.05	1500	DMO	0.05	450	0.05	1500	DMO	0.05
512	0.10	0.10	1500	DMO	0.10	450	0.10	1500	DMO	0.10
513	0.15	0.15	1500	DMO	0.15	450	0.15	1500	DMO	0.15
514	0.20	0.20	1500	DMO	0.20	450	0.20	1500	DMO	0.20
515	0.25	0.25	1500	DMO	0.25	450	0.25	1500	DMO	0.25
516	0.30	0.30	1500	DMO	0.30	450	0.30	1500	DMO	0.30
517	0.35	0.35	1500	DMO	0.35	450	0.35	1500	DMO	0.35
518	0.40	0.40	1500	DMO	0.40	450	0.40	1500	DMO	0.40
519	0.45	0.45	1500	DMO	0.45	450	0.45	1500	DMO	0.45
520	0.50	0.50	1500	DMO	0.50	450	0.50	1500	DMO	0.50
521	0.55	0.55	1500	DMO	0.55	450	0.55	1500	DMO	0.55
522	0.60	0.60	1500	DMO	0.60	450	0.60	1500	DMO	0.60
523	0.65	0.65	1500	DMO	0.65	450	0.65	1500	DMO	0.65
524	0.70	0.70	1500	DMO	0.70	450	0.70	1500	DMO	0.70
525	0.75	0.75	1500	DMO	0.75	450	0.75	1500	DMO	0.75
526	0.80	0.80	1500	DMO	0.80	450	0.80	1500	DMO	0.80
527	0.85	0.85	1500	DMO	0.85	450	0.85	1500	DMO	0.85
528	0.90	0.90	1500	DMO	0.90	450	0.90	1500	DMO	0.90
529	0.95	0.95	1500	DMO	0.95	450	0.95	1500	DMO	0.95
530	1.00	1.00	1500	DMO	1.00	450	1.00	1500	DMO	1.00

LIVIA 1



450 400 350 300 250 200 150 101 SP

21M 203M 456M 530M



FINA ITALIANA



WESTERN GEOPHYSICAL

AREA
GULF OF TARANTO
PERMIT : D.R67.FI

RECORDING DATA

DATE: 01/11/84
TIME: 10:00
LOCATION: GULF OF TARANTO
DEPTH: 1000 M
VELOCITY: 1500 M/S
ANALYSIS: DMO, MIG, TVF

PROCESSING SEQUENCE

1. DATA
2. FILTER
3. DECONVOLVE
4. STACK
5. CORRECT
6. TIME WARP
7. TIME SKEW
8. TIME SKEW
9. TIME SKEW
10. TIME SKEW
11. TIME SKEW
12. TIME SKEW
13. TIME SKEW
14. TIME SKEW
15. TIME SKEW
16. TIME SKEW
17. TIME SKEW
18. TIME SKEW
19. TIME SKEW
20. TIME SKEW

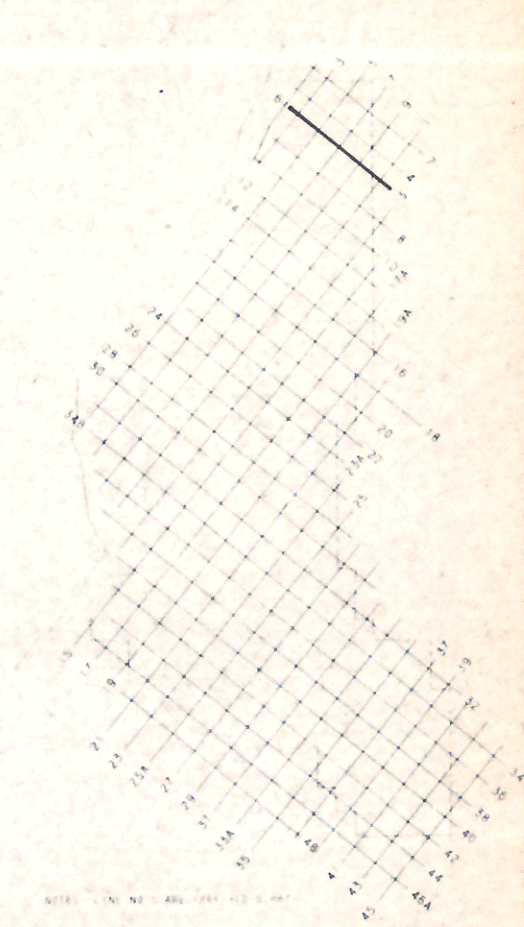
SCALES

HORIZONTAL: 1:1000
VERTICAL: 1:100

LEGEND

▲ WATER COLUMN
● SUBSEA CORRELATION

LINE LOCATION MAP



NOTE: THE NO. 1 AND 101 ARE THE SP. NO.