



**CLUFF OIL Ltd.**  
**ADRIATIC D.R56.CL**

W SP I **Line: 81-CLA-II** SP. 550 E

**MIGRATION**

PL. No. 13M NOV. 1981

**FIELD RECORDING 4800%**  
Party: 1271145 CGG

**SHIP**  
Positioning: Primary M.V. POLAR BJORN  
Secondary SYLEDIS  
Recording Date: SEPTEMBER 1981

**INSTRUMENTS**  
Field Recorder: SN 338B  
Format: SEG B, 1600 BPI  
Filter: Lo: 8Hz/12dB/oct, Hi: 125Hz/72dB/oct  
Sampling Rate: 2 ms  
Record Length: 6 s

**SOURCE**  
Depth: 5.7m  
Capacity: 2 PV80 VALVES, 1 JET/VALVE  
S.P. Interval: 25 m

**STREAMER**  
Depth: 12 m  
Length: 2400 m  
Groups: 96  
Group Interval: 25 m  
Type of Hydrophone: HC 20  
Hydrophone Pattern: 24/GROUP

**DIGITAL PROCESSING**  
Sequence in 4 ms

1. DEMULTIPLY, EDIT, ADJACENT TRACE SUMMING & RESAMPLING TO 4ms
2. CDP GATHER
3. SPHERICAL DIVERGENCE COMPENSATION
4. SIGNATURE DECONVOLUTION (with recorded signature) WAPC@ V
5. PREDICTIVE DECONVOLUTION  
GAP: 32ms  
design window\* op. length pre-whitening  
0.2 - 2.6 s 240ms 5%  
2.3 - 4.5 s 240ms 5%
6. VELOCITY ANALYSIS - ANVIT 1 per 2Km
7. CONSTANT VELOCITY STACKS (CVS) AT SELECTED CDP's (see section)
8. NMO CORRECTION, MUTING
9. STACK 4800% (weighted)
10. GUN & CABLE DEPTH STATIC CORRECTION -12 ms
11. WAVE EQUATION MIGRATION (WEMIG) (Velocity increase of 5%)
12. WHITENING DECONVOLUTION  
design window\* op. length pre-whitening  
0.2 - 1.8 s 240ms 5%  
1.6 - 3.6 s 240ms 10%  
3.2 - 5.0 s 240ms 15%
13. FILTER TIME & SPACE VARIANT (see section)
14. TRACE EQUALISATION\*
15. DISPLAY

\* Sea bottom dependent

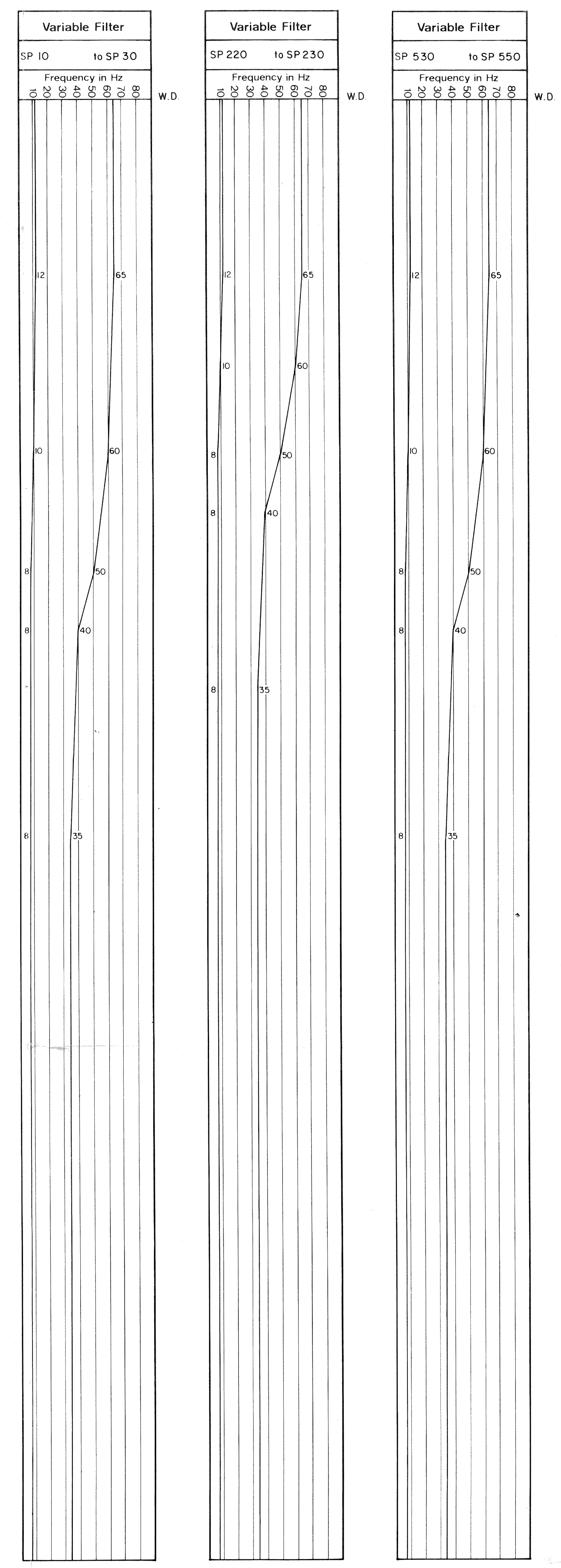
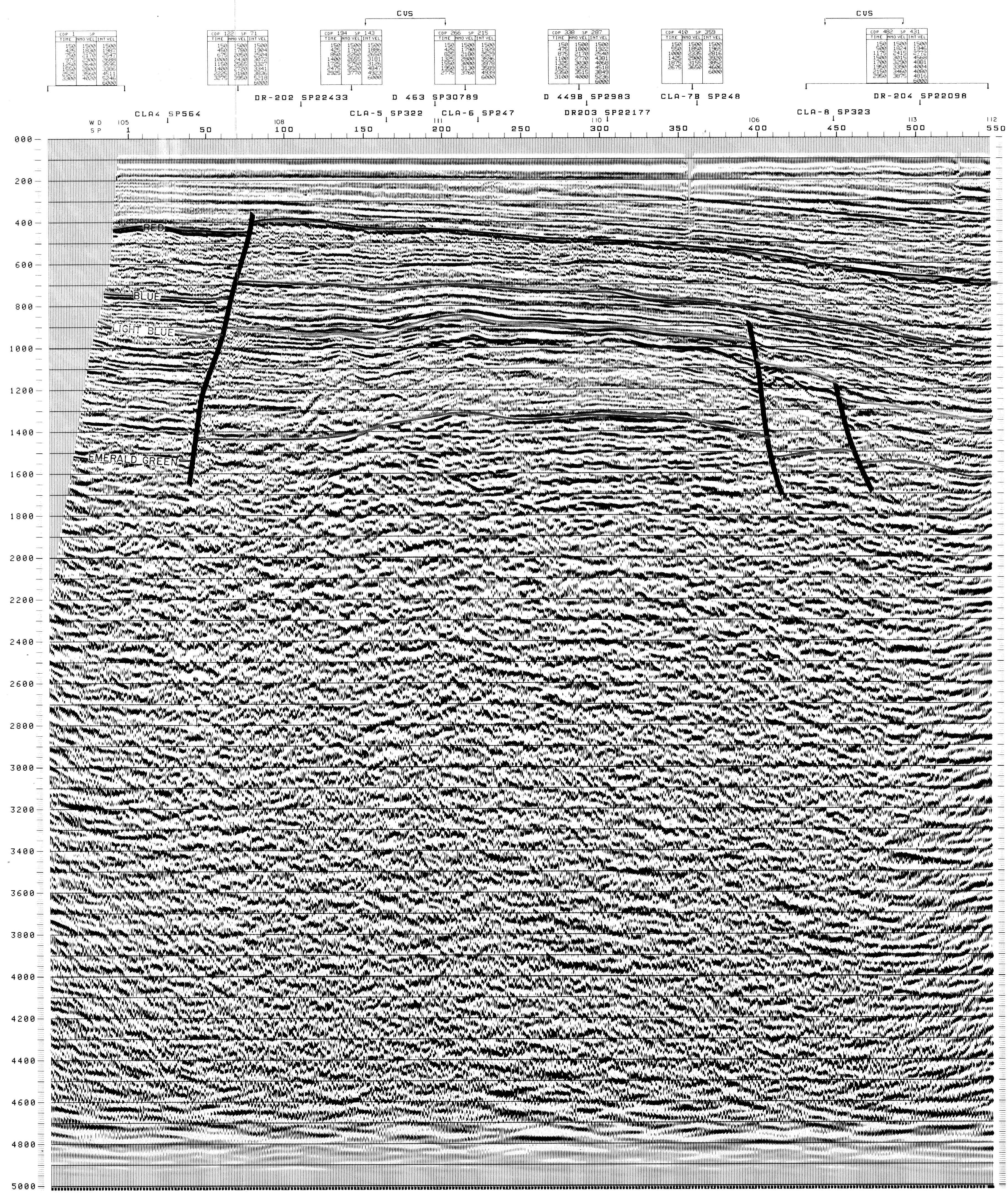
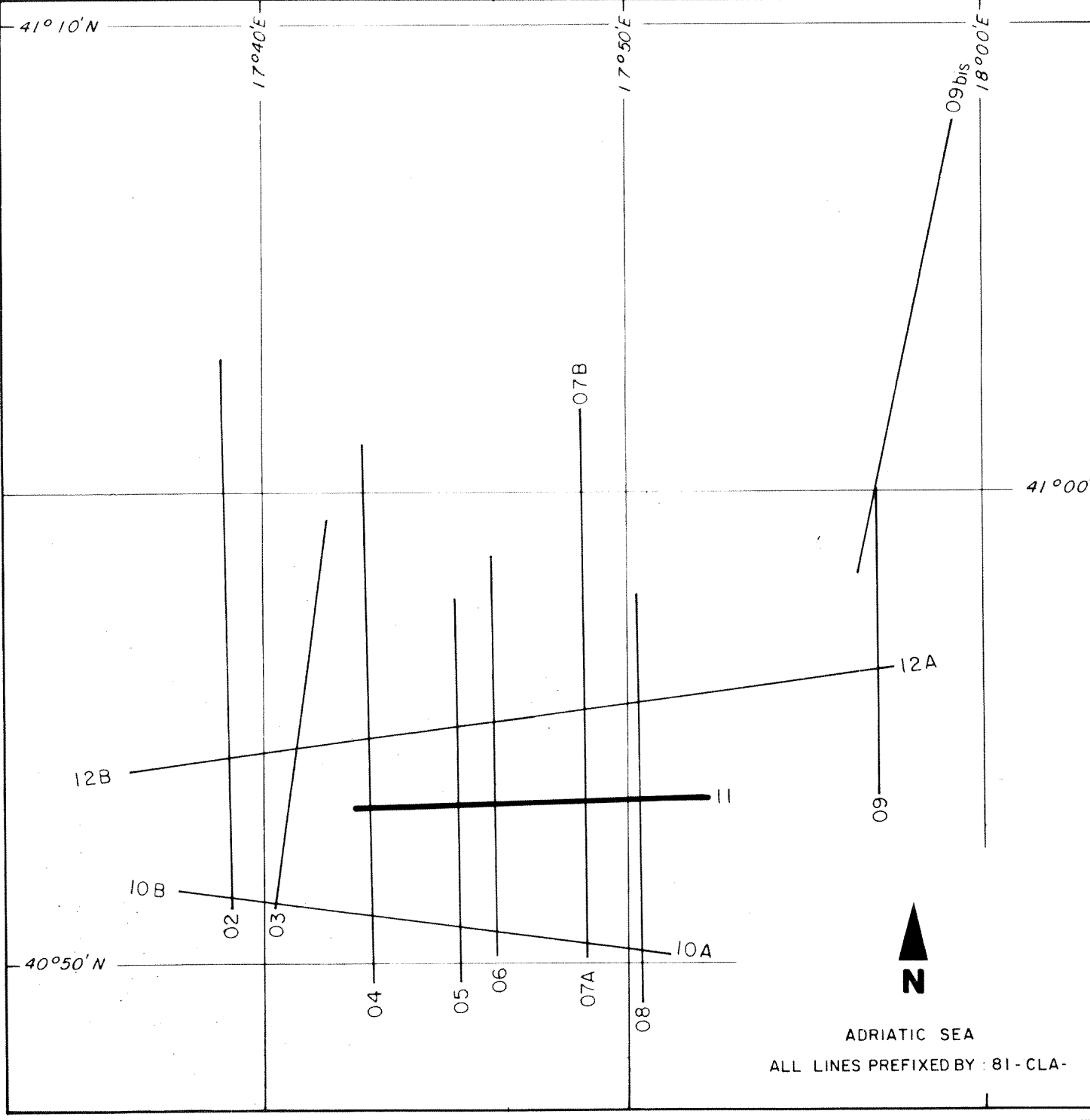
COMPAGNIE GENERALE DE GEOPHYSIQUE  
LONDON PROCESSING CENTRE

**POLARITY** A compression wave at geophone was recorded as a negative number and displayed as a trough (white)

**SECTION ANNOTATION**  
Shot Points marked at gun position

Horizontal Scale ..... 1:33,333  
Vertical Scale ..... 10 cm/s

Datum Plane ..... M.S.L.  
Security No. .... 127 11 45



23 APR 1982  
3392

**CLUFF OIL LIMITED**

ADRIATIC SEA  
PERMIT D.R56.CL

SEISMIC LINE 81-CLA-II  
(MIGRATED)

Report 7/82

DATE	ENCLOSURE	REFERENCE
APRIL 1981	II	82/113