



CLUFF OIL Ltd.

ADRIATIC D.R56.CL

S SP. I Line: 81-CLA-06 SP. 630 N

MIGRATION

PL No. 5M NOV. 1981

FIELD RECORDING 4800%

Party: 1271145 CGG

SHIP: M.V. POLAR BURN

Positioning: Primary SYLEDIS

Secondary SATNAV

Recording Date: SEPTEMBER 1981

INSTRUMENTS

Field Recorder: SN 338B

Format: SEGB, 1600 BPI

Filter: Lo 8Hz/12dB/oct, Hi 125Hz/72dB/oct

Sampling Rate: 2 ms

Record Length: 6s

SOURCE

Depth: 5.7m

Capacity: 2 PV80 VALVES, 1 JET/VALVE

S.P. Interval: 2.5m

STREAMER

Depth: 12m

Length: 2400m

Groups: 96

Group Interval: 25m

Type of Hydrophone: HC 20

Hydrophone Pattern: 24/GROUP



DIGITAL PROCESSING Sequence in 4 ms

1. DEMULTIPLEX, EDIT, ADJACENT TRACE SUMMING & RESAMPLING TO 4ms

2. CDP GATHER

3. SPHERICAL DIVERGENCE COMPENSATION

4. SIGNATURE DECONVOLUTION (with recorded signature) WAPC@ V

5. PREDICTIVE DECONVOLUTION GAP: 32ms

design window op length pre-whitening

0.2 - 2.6 s 240ms 5%

2.3 - 4.5 s 240ms 5%

6. VELOCITY ANALYSIS - ANVIT 1 per 2Km

7. CONSTANT VELOCITY STACKS (CVS) AT SELECTED CDP's (see section)

8. NMO CORRECTION, MUTING

9. STACK 4800% (weighted)

10. GUN & CABLE DEPTH STATIC CORRECTION -12 ms

11. WAVE EQUATION MIGRATION (WEMIG) (Velocity increase of 5%)

12. WHITENING DECONVOLUTION design window op length pre-whitening

0.2 - 1.8 s 240ms 5%

1.6 - 3.6 s 240ms 10%

3.2 - 5.0 s 240ms 15%

13. FILTER TIME & SPACE VARIANT (see section)

14. TRACE EQUALISATION

15. DISPLAY

* Sea bottom dependent

COMPAGNIE GENERALE DE GEOPHYSIQUE LONDON PROCESSING CENTRE

POLARITY: A compression wave at geophone was recorded as a negative number and displayed as a trough (white)

Horizontal Scale: 1:33,333

Vertical Scale: 10cm/s

SECTION ANNOTATION: Shot Points marked at gun position

Datum Plane: M.S.L.

Security No: 1271145

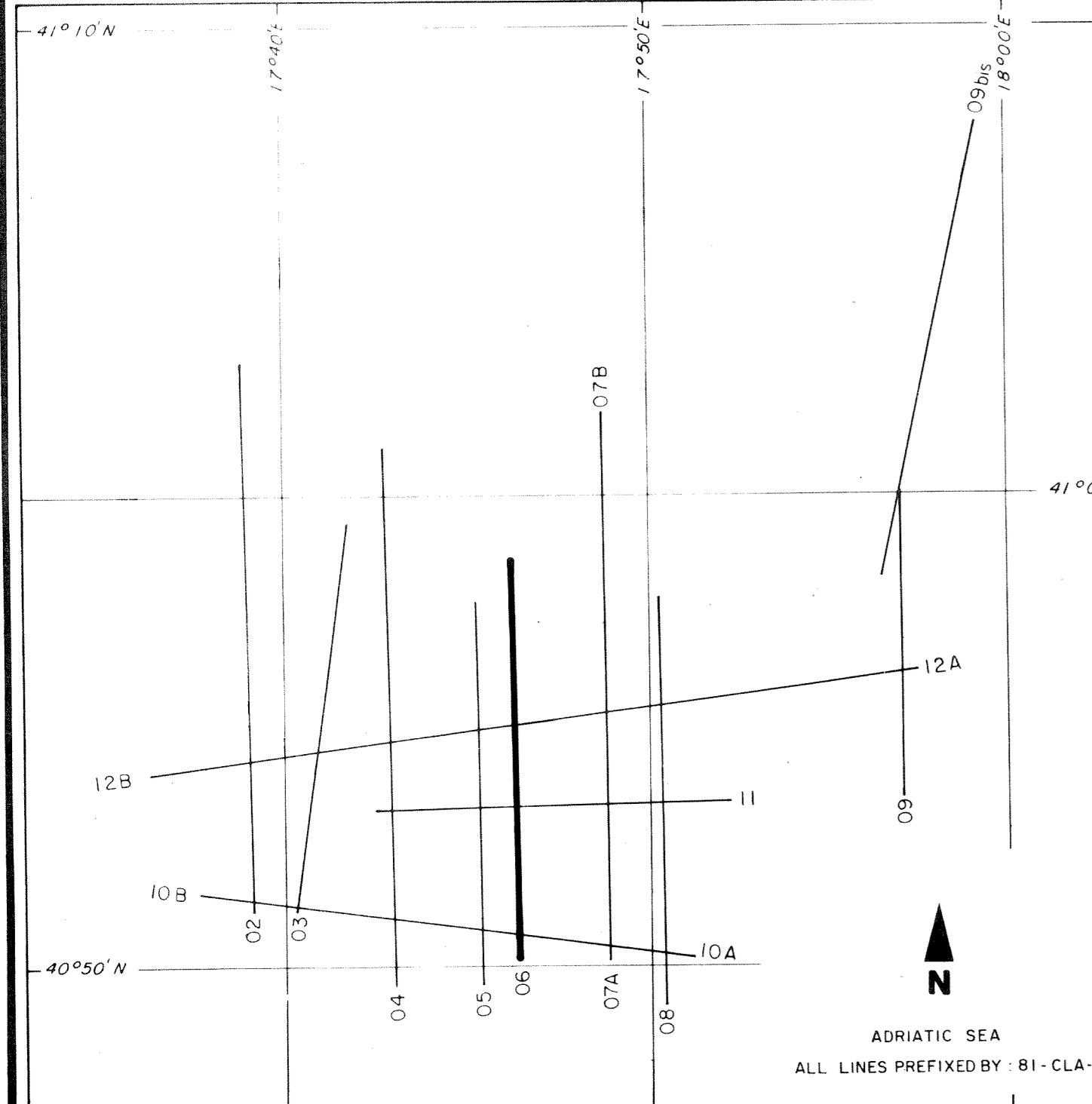
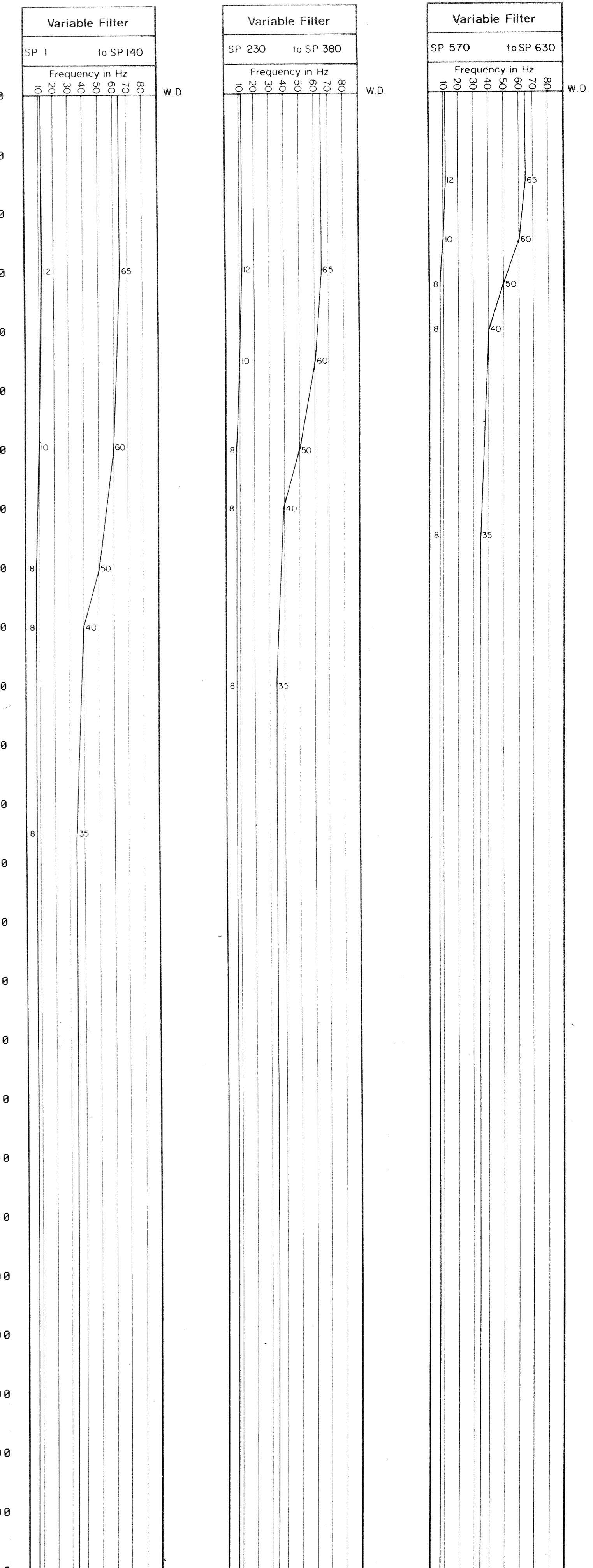
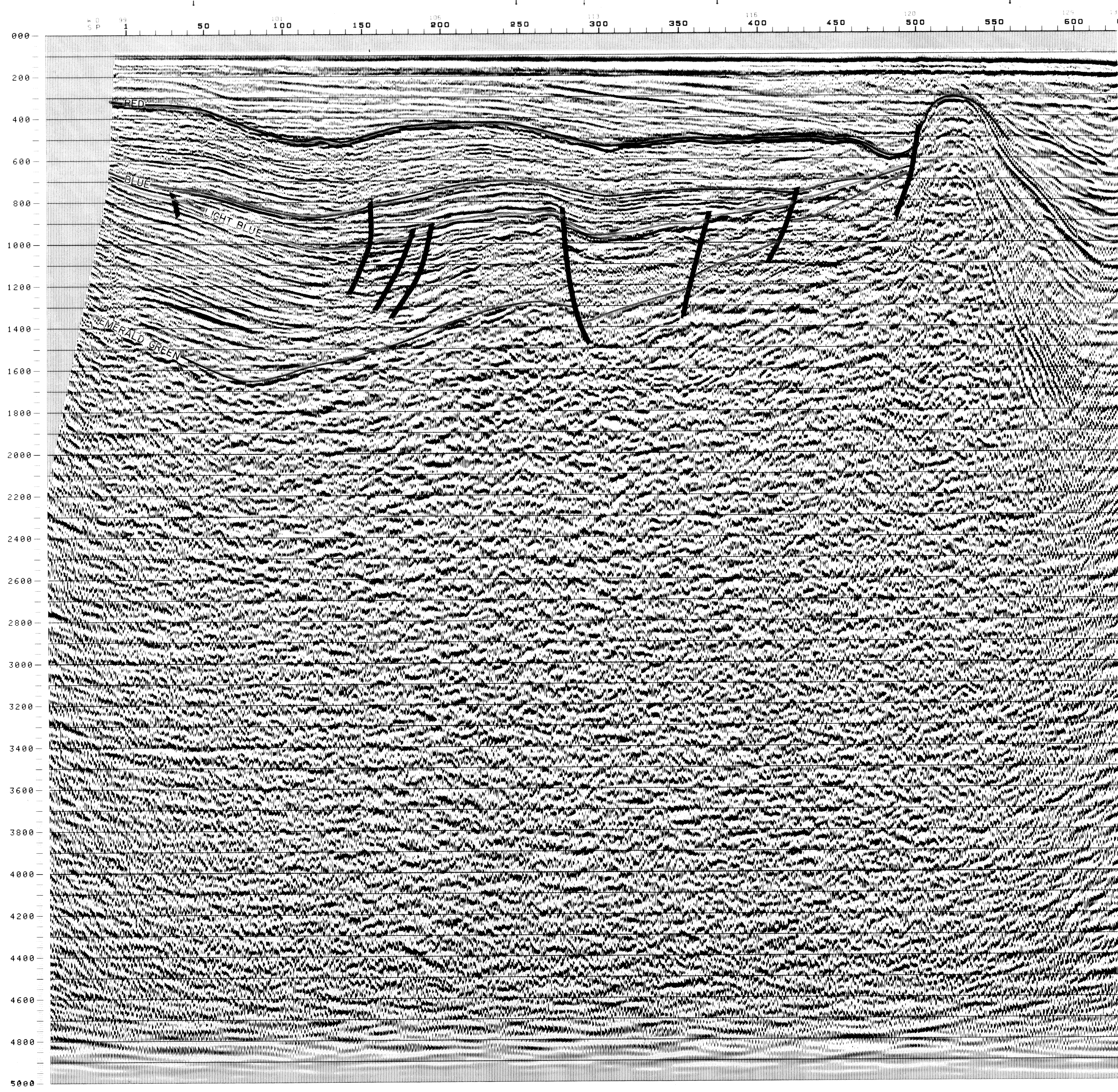


Table of Constant Velocity Stacks (CVS) with columns for CVS number, SP range, and velocity values.



CLUFF OIL LIMITED
ADRIATIC SEA PERMIT D.R56.CL
SEISMIC LINE 81-CLA-06 (MIGRATED)
Report 17/82
DATE: APRIL 1982 ENCLOSURE: 10 REFERENCE: 82/112