



ALL 3

# AGIP

WESTERN GEOPHYSICAL  
COMPANY OF AMERICA

OFFSHORE  
ITALY

W.G.C. CONTRACT NO. 338  
PROCESSED IN LONDON DIGITAL CENTRE JUN 1981  
DATE SHOT JULY 1980

RECORDING DATA

**BOAT**  
M.V. WESTERN SEA PARTY 62  
PRIMARY NAVIGATION BY SILEDIS  
SECONDARY NAVIGATION BY SAT. NAV.  
MAP/SECTION LOCATION C.B.P.

**SOURCE**  
AQUAPULSE NUMBER OF GUNS 8  
GUN DEPTH 3M  
GUNS PER RM 40  
S.P. INTERVAL 25M

**INSTRUMENTS**  
AMPLIFIER LRS 888  
FILTER L.O. 6HZ. 180B/OCT HI. 175HZ. 700B/OCT  
RECORD LENGTH 6 SECS  
SAMPLE RATE 2 MS  
FORMAT SEC C (NO GAP), 1600 BPI

**CABLE**  
2400M STREAMER NO OF GROUPS 96  
HYDROPHONES 20 PER GROUP  
GROUP LENGTH 23M  
GROUP INTERVAL 25M  
CABLE DEPTH 12M

PROCESSING SEQUENCE

PROCESSING SAMPLE RATE 4 MS  
DEMULTIPLEX  
SUBSAMPLE TO 4 MS SAMPLE RATE  
BEAM STEER  
3 GROUPS WITH DIFFERENTIAL AND APPLIED WEIGHTS 1:2:1 21P GAP INT. 50M  
PREPROCESSOR - D.B.S.  
(A) COMMON DEPTH FAMILY GATHER  
(B) GEOMETRIC SPREADING GAIN APPLIED  
(C) 6HZ LO-CUT PREFILTER APPLIED  
(D) DECONVOLUTION MIN. PHASE INVERSE FILTER  
WINDOW LENGTH 1 X 3500 MS  
MINIMUM PREDICTIVE LAG 8 MS  
LENGTH OF FILTER OPERATOR 236 MS  
(E) RMS GAIN ON OUTPUT

VELOCITY ANALYSIS

EXPANDED VELANS  
N.M.D. - 4800% STACK  
MUTE

TIME VARIANT FILTER

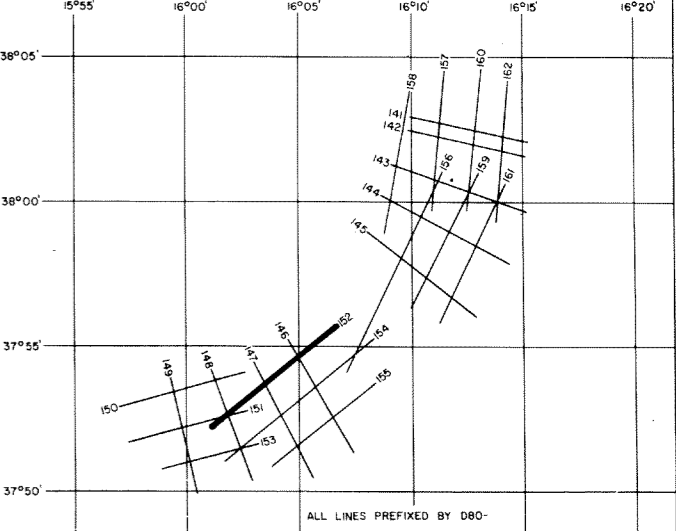
TIME (SECS)	L.C. (HZ/OB/OCT)	H.C.
0.100	12/18	50/48
1.100	10/18	40/48
3.800	6/12	30/48

FILTERS ARE INTERPOLATED IN TIME AND SPACE  
TIMES ARE SPECIFIED AT START OF LINE  
RMS GAIN ON OUTPUT

COMMENTS

DATUM PLANE IS SEA LEVEL  
A GUN AND CABLE CORRECTION OF 13 MS HAS BEEN APPLIED IN THE FINAL DISPLAY. COMPRESSION PULSES RECORD AS NEGATIVE NUMBERS ON TAPE AND PLOT AS TROUGHS (WHITE) ON PLAYBACK

LINE LOCATION MAP



ALL LINES PREFIXED BY D80-

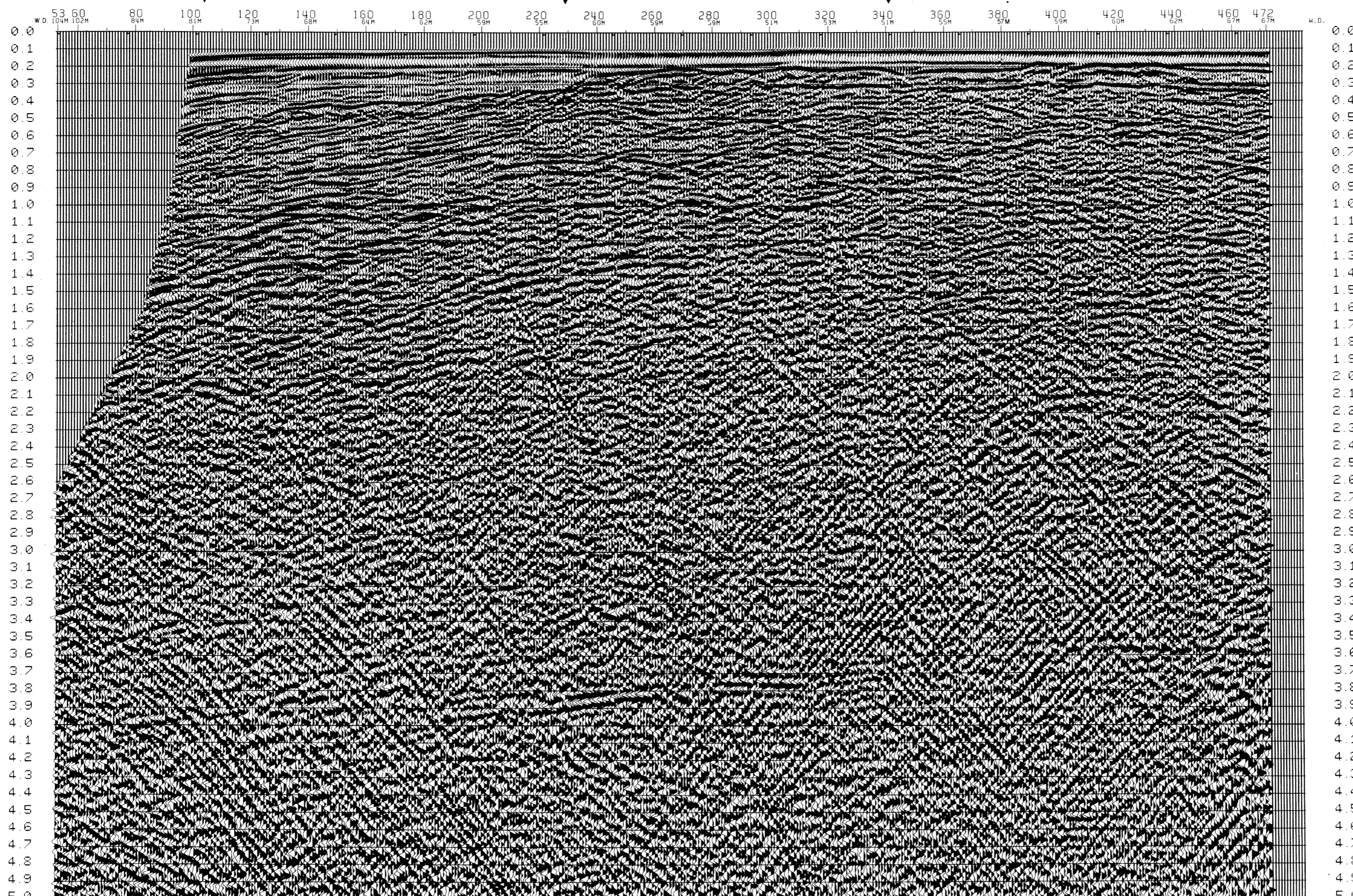
LINE: D80-152  
S.P. 53 TO 472

TIME (S)	RMS VEL (M/S)	DIX (M)
0.10	1480	1480
0.31	1550	1574
0.57	1640	1681
0.71	1680	1746
1.01	1710	1802
1.17	1780	1862
1.30	1740	1795
1.48	1770	1841
1.73	1840	1902
1.94	1860	1930
2.18	1940	1974
2.40	1980	2021
2.40	1980	2021

TIME (S)	RMS VEL (M/S)	DIX (M)
0.10	1480	1480
0.31	1550	1574
0.57	1640	1681
0.71	1680	1746
1.01	1710	1802
1.17	1780	1862
1.30	1740	1795
1.48	1770	1841
1.73	1840	1902
1.94	1860	1930
2.18	1940	1974
2.40	1980	2021
2.40	1980	2021

TIME (S)	RMS VEL (M/S)	DIX (M)
0.10	1480	1480
0.31	1550	1574
0.57	1640	1681
0.71	1680	1746
1.01	1710	1802
1.17	1780	1862
1.30	1740	1795
1.48	1770	1841
1.73	1840	1902
1.94	1860	1930
2.18	1940	1974
2.40	1980	2021
2.40	1980	2021

TIME (S)	RMS VEL (M/S)	DIX (M)
0.05	1480	1480
0.31	1550	1574
0.50	1620	1634
0.67	1680	1693
0.90	1750	1758
1.07	1800	1812
1.24	1860	1871
1.50	1910	1925
1.74	1930	1951
2.07	1970	1990
2.76	2010	2033
3.23	2040	2068
5.40	2100	2100



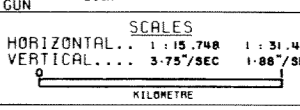
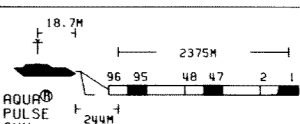
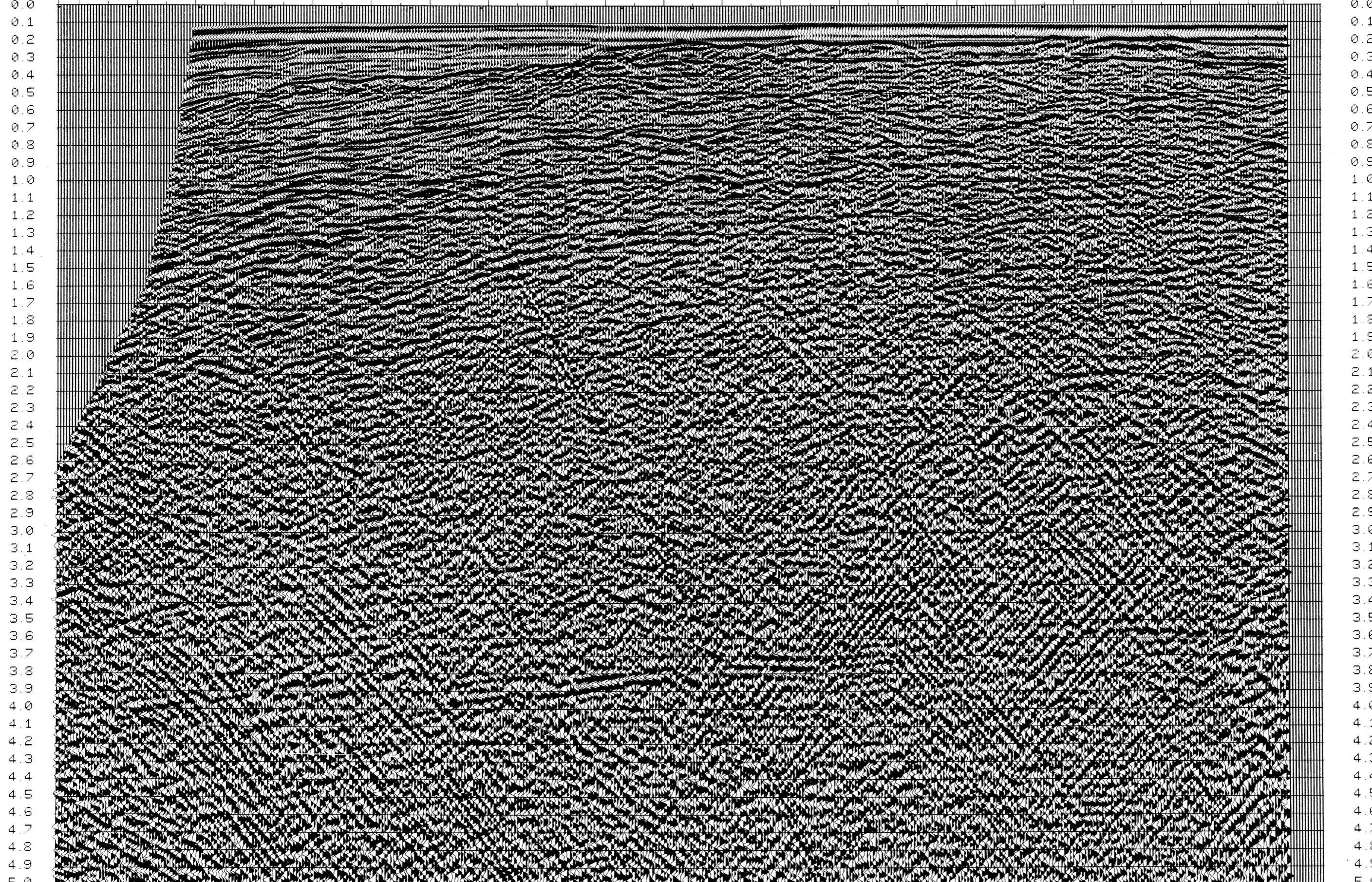
D80-151  
S.P. 313

D80-148  
S.P. 215

D80-147  
S.P. 159

D80-146  
S.P. 110

W.D. 53 60 80 100 120 140 160 180 200 220 240 260 280 300 320 340 360 380 400 420 440 460 472 W.D.



**LEGEND**  
INTERSECTIONS  
W.D. WATER DEPTH  
V.V. VELOCITY ANALYSIS

G.C. FOR W.G.C. *M. M. ...*