



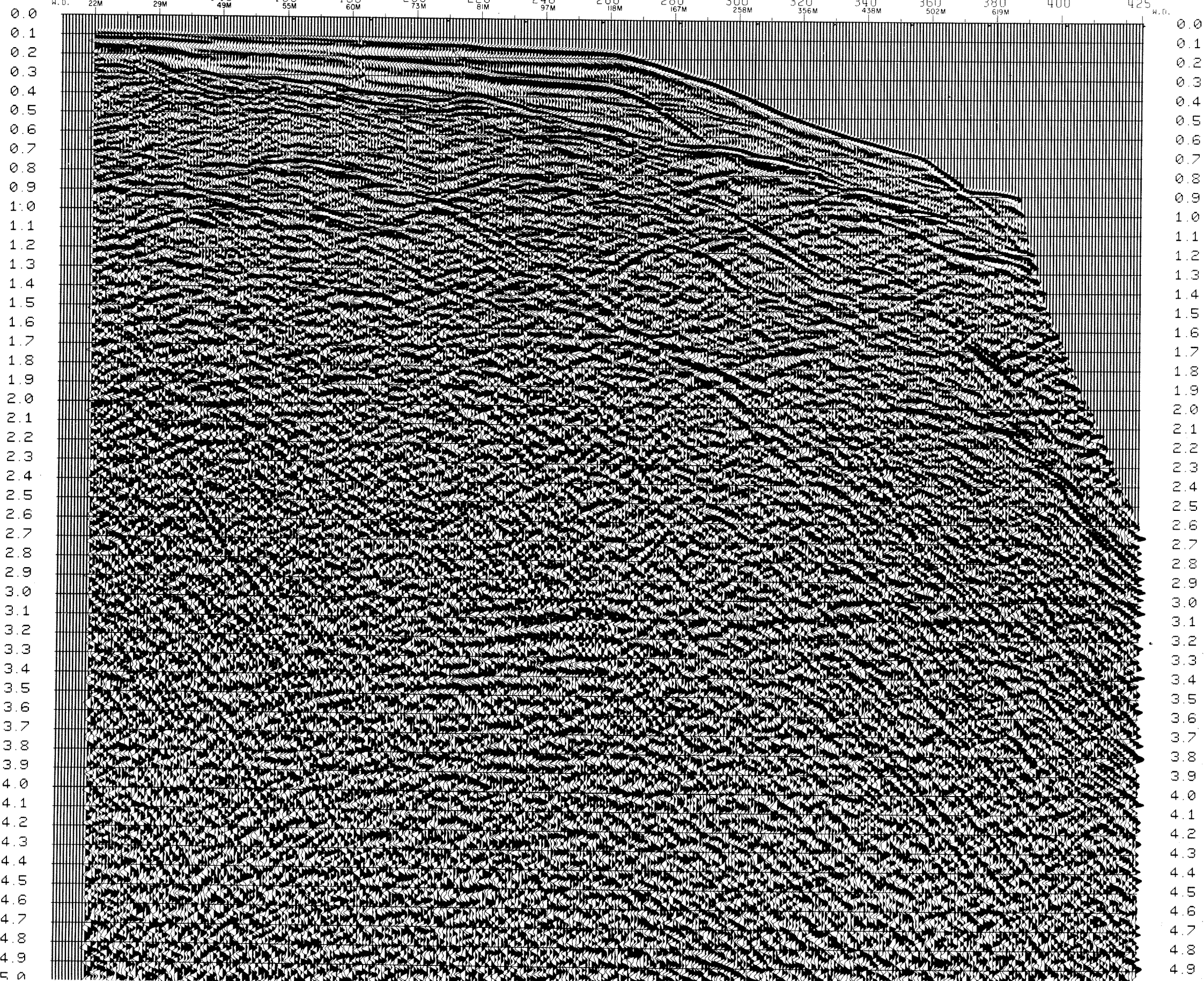
ALL. 2

LINE: D80-147
 S.P. 100 TO 425

TIME (S)	AMS (M)	DIV (M)
0.22	1480	1480
0.34	1680	2010
0.51	1950	2130
0.74	2110	2595
0.94	2110	2934
1.05	2460	3488
1.26	2660	3495
1.42	2830	3915
1.73	3160	5095
2.34	3880	5091
2.77	4180	5083
3.41	4350	4988
4.20	4800	5298

TIME (S)	AMS (M)	DIV (M)
0.30	1480	1480
0.46	1550	1671
0.65	1700	1912
0.81	1910	2594
1.04	2140	2804
1.29	2380	3120
1.58	2630	3430
1.80	2750	3965
2.40	3590	4900
3.29	3890	4783
4.34	4230	4932
5.20	4550	5221

TIME (S)	AMS (M)	DIV (M)
0.65	1480	1480
0.86	1550	1761
1.05	1650	2061
1.22	1780	2571
1.34	1800	3104
1.46	2190	3831
1.66	2480	4005
1.95	2770	4427
2.53	3230	4850
3.91	3870	4803
5.20	4420	5237



AGIP

WESTERN GEOPHYSICAL
COMPANY OF AMERICA

OFFSHORE ITALY	W.G.C. CONTRACT NO. 330 PROCESSED IN LONDON DIGITAL CENTRE JAN 1981 DATE SHOT: JULY 1980															
RECORDING DATA	PROCESSING SEQUENCE															
BOAT M.V. WESTERN SEA PARTY 62 PRIMARY NAVIGATION BY STYLEDIS SECONDARY NAVIGATION BY SRT. NAV. C.D.P.	PROCESSING SAMPLE RATE: 4 MS DEMULTIPLIX SUBSAMPLE TO 4 MS SAMPLE RATE															
SOURCE AQUAPULSE NUMBER OF GUNS: 8 GUN DEPTH: 9M POPS PER GUN: 40 S.P. INTERVAL: 25M	BEAM STEER 3 GROUPS WITH DIFFERENTIAL WND APPLIED WEIGHTS (1:2:1) O/P GAP INT. 50M															
INSTRUMENTS AMPLIFIER: LAS 888 FILTER: LO. 6HZ, 180B/OCT HI. 175HZ, 700B/OCT RECORD LENGTH: 6 SECS SAMPLE RATE: 2 MS FORMAT: SEC C (NO GAP), 1600 BP	PREPROCESSOR - D.B.S. (A) COMMON DEPTH FAMILY GATHER (B) GEOMETRIC SPREADING GAIN APPLIED (C) 6HZ LO-CUT PREFILTER APPLIED (D) DECONVOLUTION TYPE: MIN. PHASE INVERSE FILTER WINDOW LENGTH: 1 X 3500 MS MINIMUM PREDICTIVE LAG: 8 MS LENGTH OF FILTER OPERATOR: 238 MS (E) AMS GAIN ON OUTPUT															
CABLE 2400M STREAMER NO OF GROUPS: 96 HYDROPHONES: 20 PER GROUP GROUP LENGTH: 23M GROUP INTERVAL: 25M CABLE DEPTH: 12M	VELOCITY ANALYSIS EXPANDED VELANS N.M.D. - 4800% STACK MUTE															
	TIME VARIANT FILTER <table border="1"> <thead> <tr> <th>TIME (SECS)</th> <th>L.C. (HZ, DB/OCT)</th> <th>H.C.</th> </tr> </thead> <tbody> <tr><td>0</td><td>12/18</td><td>50/48</td></tr> <tr><td>1</td><td>10/18</td><td>40/48</td></tr> <tr><td>3</td><td>5/00</td><td>6/12</td></tr> <tr><td>3</td><td>5/00</td><td>30/48</td></tr> </tbody> </table> FILTERS ARE INTERPOLATED IN TIME AND SPACE TIMES ARE SPECIFIED AT START OF LINE AMS GAIN ON OUTPUT	TIME (SECS)	L.C. (HZ, DB/OCT)	H.C.	0	12/18	50/48	1	10/18	40/48	3	5/00	6/12	3	5/00	30/48
TIME (SECS)	L.C. (HZ, DB/OCT)	H.C.														
0	12/18	50/48														
1	10/18	40/48														
3	5/00	6/12														
3	5/00	30/48														
LEGEND W.D. WATER DEPTH VELOCITY ANALYSIS	COMMENTS DATUM PLANE IS SEA LEVEL A GUN AND CABLE CORRECTION OF 13 MS HAS BEEN APPLIED IN THE FINAL DISPLAY. COMPRESSION PULSES RECORD AS NEGATIVE NUMBERS ON TAPE AND PLOT AS TROUGHS (WHITE) ON PLAYBACK															

