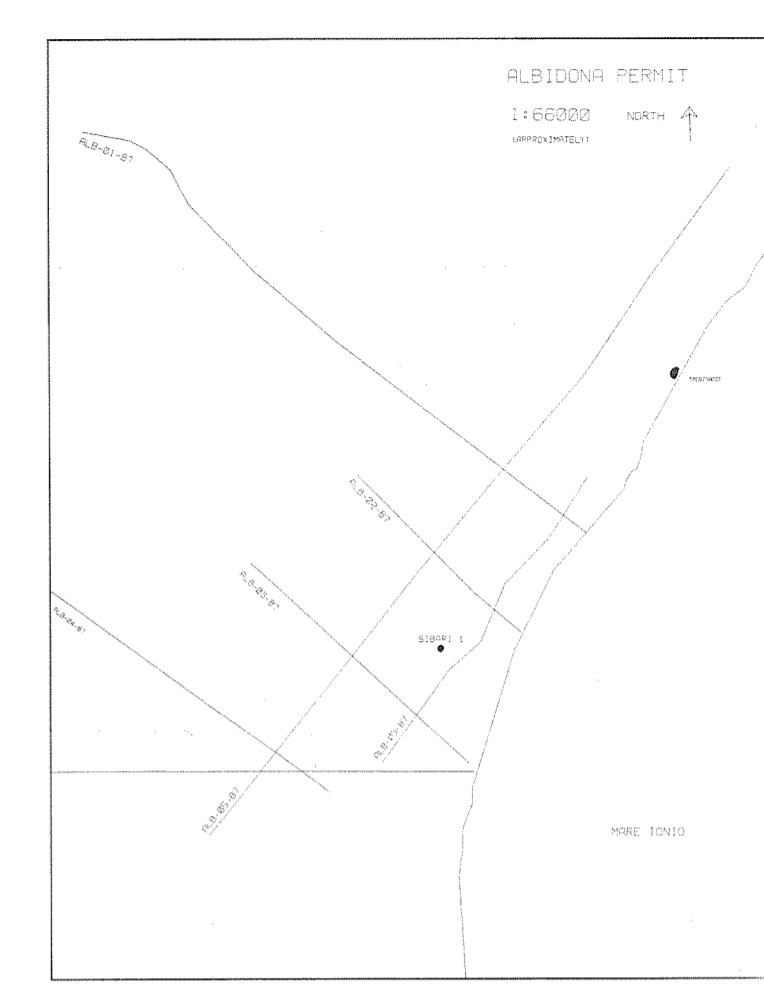
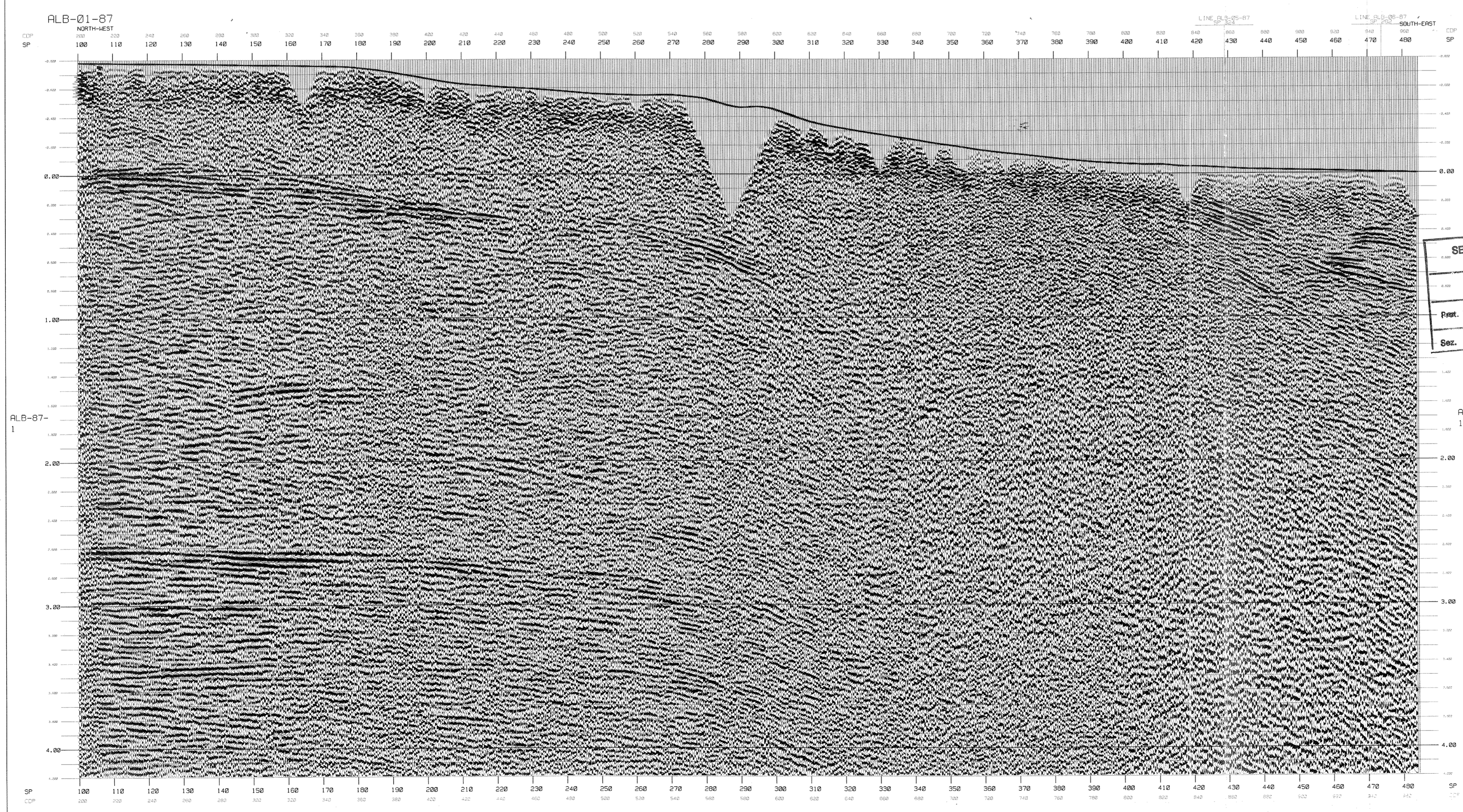


LINE	WPS	WNT	LINE	WPS	WNT	LINE	WPS	WNT	LINE	WPS	WNT	LINE	WPS	WNT
100	100	100	200	200	200	300	300	300	400	400	400	500	500	500
100	100	100	200	200	200	300	300	300	400	400	400	500	500	500
100	100	100	200	200	200	300	300	300	400	400	400	500	500	500
100	100	100	200	200	200	300	300	300	400	400	400	500	500	500
100	100	100	200	200	200	300	300	300	400	400	400	500	500	500
100	100	100	200	200	200	300	300	300	400	400	400	500	500	500
100	100	100	200	200	200	300	300	300	400	400	400	500	500	500
100	100	100	200	200	200	300	300	300	400	400	400	500	500	500
100	100	100	200	200	200	300	300	300	400	400	400	500	500	500
100	100	100	200	200	200	300	300	300	400	400	400	500	500	500
100	100	100	200	200	200	300	300	300	400	400	400	500	500	500
100	100	100	200	200	200	300	300	300	400	400	400	500	500	500
100	100	100	200	200	200	300	300	300	400	400	400	500	500	500



<b>SNIA BPD</b>		
LINE: ALB-01-87 SP: 100 - 478 ALBIDONA PERMIT ITALY		
<b>FINAL STACK</b>		
RECORDING PARAMETERS		
RECORDED BY: S.I.A.S.	DATE SHOT: 5-10-1987	BY: BT
FIELD NO.: 0000 00	ENERGY SOURCE: CHARGE	
RECORDING METHOD: 001	GROUP INTERVAL: 30 M.	
SHOT FILTER: 001	SHOT INTERVAL: 150 M.	
TIME CORRECT: 001	NO. OF CHANNELS: 60	
DEPT: 000 001	APPROXIMATE SHOOTING COORDINATES	UWB
DWELL TIME: 6 SECS		
DWELL RATE: 0 M/S		
000-014		
FIELD CONFIGURATION		
CHARACTER: 001	GROUP: 001	
001	001	
001	001	
001	001	
PROCESSING PARAMETERS		
PROCESSED TO FOLD OFF STACK	PROCESSED TO FOLD OFF STACK	
SPLITTED	SPLITTED	
MULTIPLE REMOVAL	MULTIPLE REMOVAL	
TRACE AND SHOT RECORD EDITING	TRACE AND SHOT RECORD EDITING	
COMMON DEPTH POINT STACK	COMMON DEPTH POINT STACK	
FIELD STATIC CORRECTION	FIELD STATIC CORRECTION	
REGISTRATION BEING STACK	REGISTRATION BEING STACK	
DECONVOLUTION	DECONVOLUTION	
INITIAL VELOCITY ANALYSIS	INITIAL VELOCITY ANALYSIS	
RESIDUAL VELOCITY ANALYSIS	RESIDUAL VELOCITY ANALYSIS	
FINAL VELOCITY ANALYSIS	FINAL VELOCITY ANALYSIS	
NORM. MOVEOUT CORRECTION	NORM. MOVEOUT CORRECTION	
PRE-SWEEP SUPPRESSION	PRE-SWEEP SUPPRESSION	
TRACE EVALUATION	TRACE EVALUATION	
RESIDUAL VELOCITY ANALYSIS	RESIDUAL VELOCITY ANALYSIS	
COMMON DEPTH POINT STACK	COMMON DEPTH POINT STACK	
TRACE EVALUATION	TRACE EVALUATION	
STATIC CORRECTION	STATIC CORRECTION	
DISPLAY PARAMETERS		
HORIZONTAL SCALE: 10000	VERTICAL SCALE: 0.1 SEC.	
DATE: 15 JANUARY 1988	BIG NUMBER 0001	
REPEATS: POSITIVE NUMBER ON TAPE DISPLAYED IN BLACK PEAK		
REVISION: 001	001	