



ADRIATIC SEA  
AREA DR 47 GM

111.3

SW 1 LINE DR47.5 660 NE

BOAT MOTION →

PL N° 77 STACK 9600 L DBAS 1VF AMCO D DEC 20 78

|  |   |
|--|---|
| <p>FIELD RECORDING 9600 %<br/>Contractor C G G</p> <p>SHIP</p> <p>POLAR BJORN<br/>NAVIGATION BY MINIRABRI Lutz<br/>SHOOTING DATE SEP 25 78</p> <p>INSTRUMENTS</p> <p>SN 338 N 200<br/>FORMAT 9 Tracks, 1000 Hz<br/>FILTER 8 KZ 5<br/>SAMPLING 4 ms</p> <p>SOURCE</p> <p>VAPORCHOC<br/>DEPTH 700<br/>CAPACITY 10000<br/>SP INTERVAL 12.5 m</p> <p>STREAMER</p> <p>LENGTH 2450 m<br/>DEPTH 10 m<br/>GROUPS 96<br/>GROUP INTERVAL 25 m<br/>GEOPHONES HC 202 48 TRACES</p> | <p>DIGITAL PROCESSING P5<br/>Sequence in 4 ms</p> <p>AMPLIFIER RECEIVERS<br/>WARR (Calibration of Receiver signals)<br/>MUTER</p> <p>OPERATION<br/>Operation Length 3000 ms<br/>Windows 100 3000 ms</p> <p>TIME JAVANT FILTER<br/>SPATIAL COHERENCE ENHANCEMENT (AMCO-D)<br/>SPATIAL EQUALIZATION<br/>ANALOG DISPLAY</p> <p>POLARITY<br/>Geophone compressions negative number on tape<br/>black peak on section</p> <p>TIME ORIGIN<br/>Source and cable depth</p> <p>HORIZONTAL SCALE<br/>80 Traces km</p> |
|--|---|

COMPAGNIE GENERALE DE GEOPHYSIQUE  
5, Rue Galvani, 91301 - MASSY - FRANCE

MONTEDISON  
ADRIATIQUE  
997.11.27  
Echelle 1:800 000

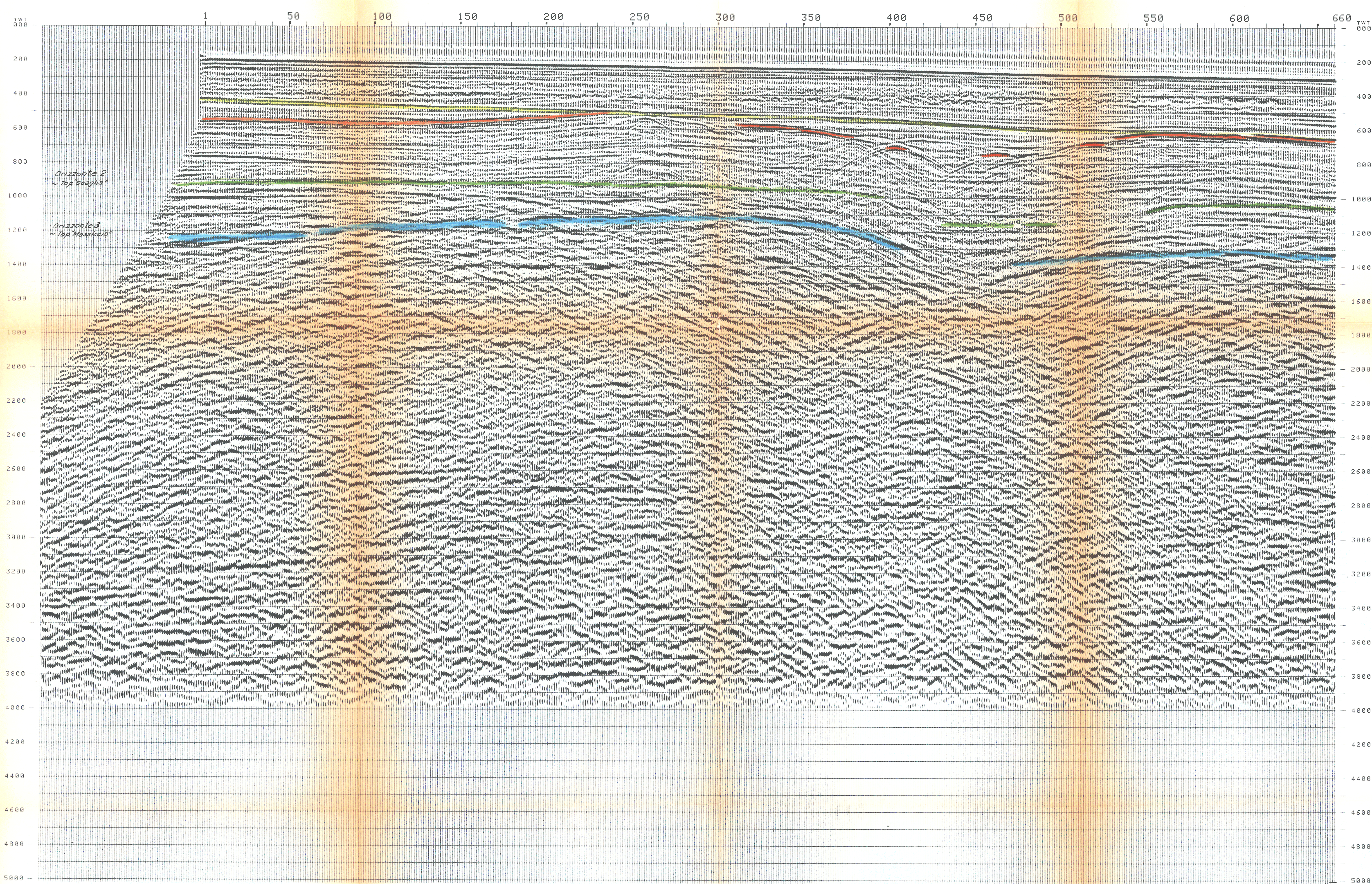
DR-47-

W D 161 164 169 173 176 180 184 188 192 194 198 200 204 208 212 216 220 224 228 232 236 240

| Corps | SP3  |
|-------|------|
| Line  | Vel  |
| 300   | 1500 |
| 1000  | 1640 |
| 1575  | 1824 |
| 1875  | 1980 |
| 2100  | 2080 |

| SP388 | SP391 |
|-------|-------|
| Line  | Vel   |
| 300   | 1500  |
| 825   | 1580  |
| 1775  | 1700  |
| 2425  | 1780  |

| SP350 | SP355 |
|-------|-------|
| Line  | Vel   |
| 300   | 1500  |
| 825   | 1580  |
| 1500  | 1670  |
| 2100  | 1760  |



AREA DR 47 GM  
VARIABLE FILTER

Hz 20 40 60 80

