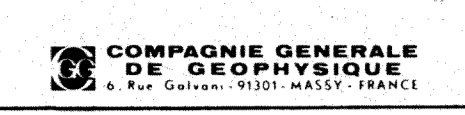


127.11.96

ADRIATIC

S 648 LINE 3 N 1



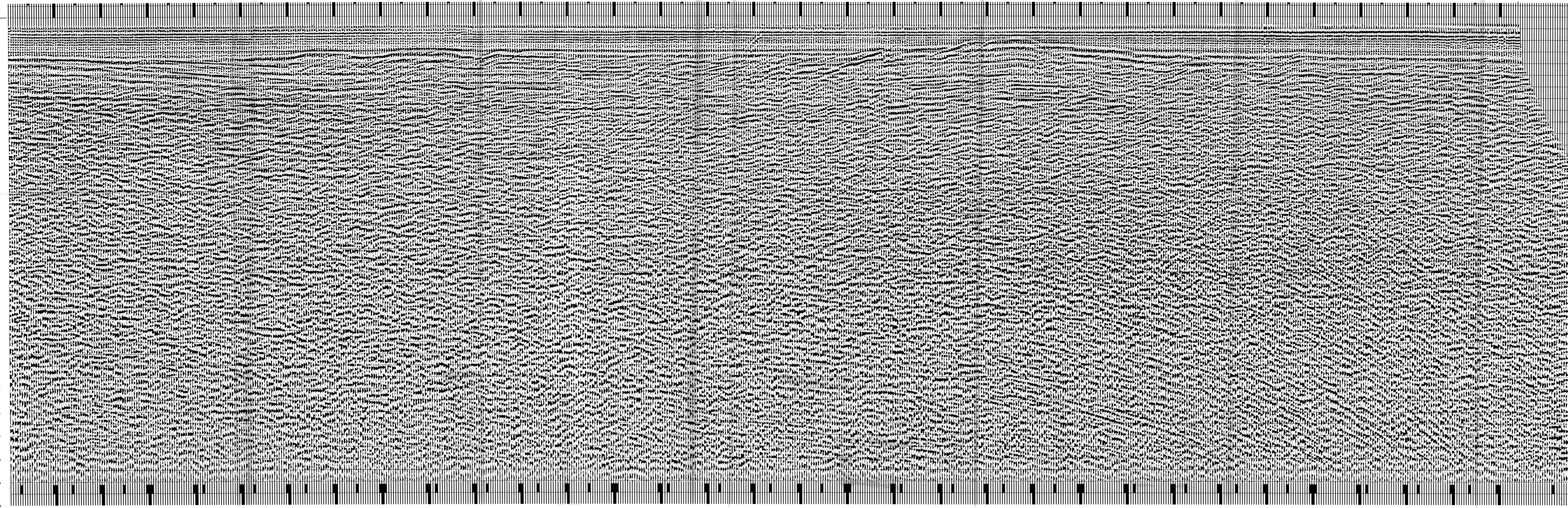
DIGITAL PROCESSING P5
 DP elevation 0
 STACK 2400%
 Boat motion

1 AMPLITUDE RECOVERY
 2 VAPC (Division by spectroic signature)
 3 MUTING
 4 DECONVOLUTER 240 ms
 window 300 - 2500 Hz
 5 VELOCITY ANALYSIS (VA)
 6 RMS CORRECTIONS
 (LINEAR INTERPOLATION
 BETWEEN VELOCITY FUNCTIONS)
 7 STACK 2400%

8 TIME VARIANT FILTER
 9 TRACE EQUALIZATION
 10 ANALOG DISPLAY

FIELD RECORDING
 Ship: VERSEAU
 Field recorder: SN328 N: 17 filter: 1/8.80
 binary gain: sampling: 4 ms
 Streamer: 3200 m (Depth: m)
 groups: 24 (group interval: 50 m)
 Geophones type: 301 m: 48 / group
 24Fold coverage
 Energy source: VAPORCHOC
 1:1
 180 m

Water depth in meters 17
 648 640 620 600 580 560 540 520 500 480 460 440 420 400 380 360 340 320 300 280 260 240 220 200 180 160 140 120 100 80 60 40 20 001



FROM SP	FROM SP	FROM SP	FROM SP	FROM SP	FROM SP
To SP	To SP	To SP	To SP	To SP	To SP
AVGVEL	AVGVEL	AVGVEL	AVGVEL	AVGVEL	AVGVEL
IN M/S	IN M/S	IN M/S	IN M/S	IN M/S	IN M/S
200	2200	2600	2070	2144	2166
400	2695	2596	2326	2718	2542
600	3674	3141	2744	3057	3228
800	4008	3281	3162	3231	3536
1000	4206	3383	3414	3504	3737
1200	4339	3527	3594	3686	3947
1400	4431	3737	3795	3837	4094
1600	4504	3895	3946	3983	4210
1800	4559	4014	4063	4096	4298
2000	4603	4116	4156	4186	4368
2200	4634	4196	4233	4264	4426
2400	4665	4263	4297	4322	4473
2600	4694	4320	4351	4374	4514
2800	4716	4368	4397	4418	4549
3000	4735	4410	4437	4457	4578
3200	4752	4447	4473	4491	4605
3400	4766	4480	4504	4521	4628
3600	4777	4509	4531	4548	4649
3800	4791	4534	4556	4571	4667
4000	4801	4558	4578	4593	4684