

# INLINE 1200

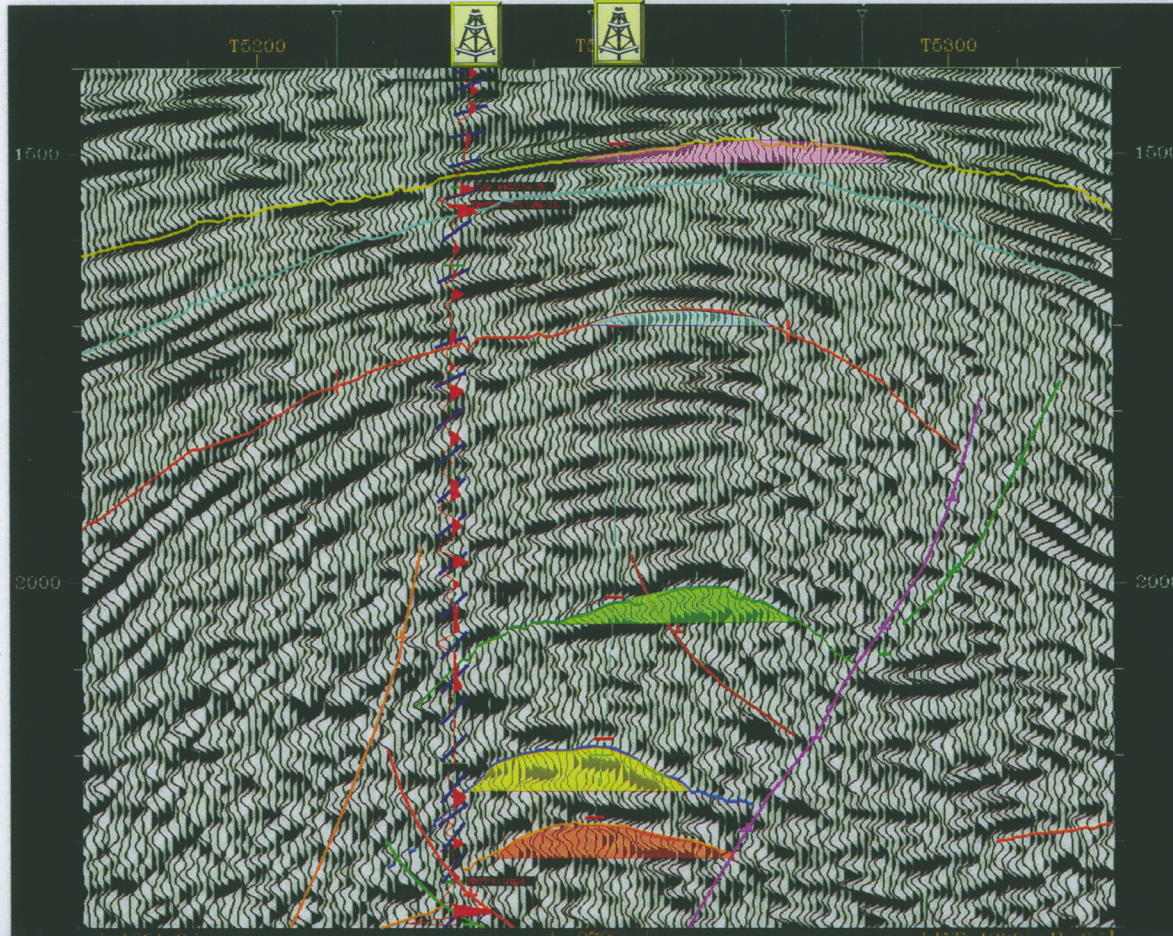
## BACINO ANCONA/PESCARA - Permesso ALBA ADRIATICA

W

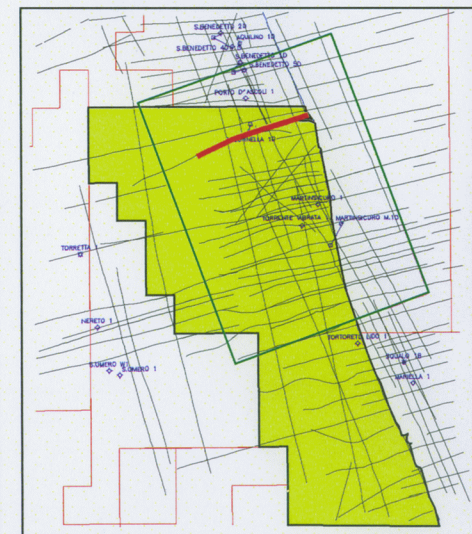
Colle Marzio

E

Colonnella 1Dir



- 1 Top sabbie basali Pliocene Sup.
- 2 Unco Base Pliocene Superiore
- 3 Unco Top Pliocene Inferiore
- 4 Orizzonte @ 1.6 sec.
- 5 Orizzonte @ 2.0 sec.
- 6 Orizzonte @ 2.2 sec.
- 7 Unco Top NPP3
- 8 Intra Cellino
- 9 Arenarie Eleonora 1 / Emilio 1
- 10 Orizzonte @ 2.8 sec. subthrust
- 11 Orizzonte @ 3.1 sec. subthrust
- 12 Top Gessi



0 273 m

UFFICIO DISEGNO 18Elena/Fonte\_Armata File:Fonte06a.cdr

Eni Divisione Agip - PIEC

Agosto 2000



Fig. 6



A577