



Stratigraphic Section: N° 6 COPPA D'APOLITO

General Location: F.° 157 III SO - Monte S. Angelo

Measured by: A. ERCOLI - M. BELLINI

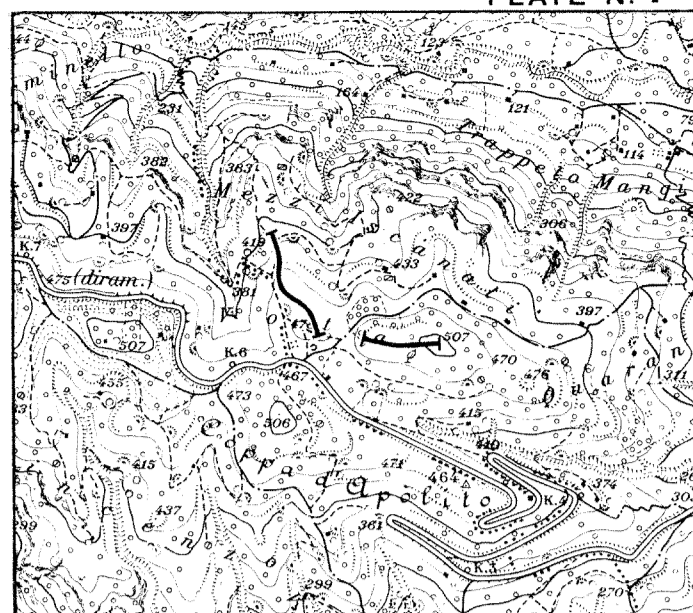
Date: 22-4-1974

Method Measured: Jacob Staff and Brunton Compass

Scale: 1: 400

Total Thickness: m. 145

SEZIONE IDROCARBURI DI NAPOLI
22 GIU. 1974
1990



Location Scale: 1:25000

Age	F.M.	Sample N°	Meters	Lithology	Thickness	Lithologic Description	Shows	Biostratigraphy
LOWER - MIDDLE EOCENE	"Pescicic", Nummulitic	A 28	140	[Lithology: Micritic limestone]	10	Micritic limestone as samples A20-22.		Nummulites, Discocyclinae, Gastropoda?
		A 27						
		A 26	120	[Lithology: Covered]	4,5	Covered.		
		A 25						
		A 24	100	[Lithology: Micritic limestone]	8	Micritic limestone as samples A20-22.		Nummulites, Discocyclinae.
		A 23						
		A 22	80	[Lithology: Detrital-skeletal limestone]	4	Detrital-skeletal limestone as samples A13-19.		
		A 21						
		A 20	60	[Lithology: Micritic limestone]	15	Micritic limestone, scarcely skeletal, fine grain, spar cement, hard, no porosity, light buff.		
		A 19						
		A 18	40	[Lithology: Detrital-skeletal limestone]	34	Detrital-skeletal limestone, locally micritic, fine to medium grain, sub-angular, well to moderately cemented, absent to scattered porosity, cream-light buff, bedding about 10 cm, massive aspect.		
		A 17						
		A 16	20	[Lithology: Detrital-skeletal limestone]	40	Detrital-skeletal limestone as sample A5, from low to absent porosity.		Nummulites, Discocyclinae, Corals.
		A 15						
		A 14	20	[Lithology: Detrital-skeletal limestone]	40	Detrital-skeletal limestone, fine-very fine grain, sub-angular, moderately cemented, locally friable, medium-low hardness, moderate porosity, light cream, stratified in beds of 10-50 cm.		
		A 13						
		A 12	20	[Lithology: Detrital-skeletal limestone]	6	Detrital-skeletal limestone, medium grain, sub-angular, well cemented, spar cement, hard, vacuolar by partial dissolution of the organic component, vacuolar porosity good, white-light cream, irregularly stratified in bed of 0,50 - 1 m.		Corals, Echinoids.
		A 11						
		A 10	20	[Lithology: Detrital-skeletal limestone]	20	Detrital-skeletal limestone, chalky type, very fine to fine grain, sub-rounded, moderately cemented, sparry cement, medium hard, locally friable, moderate vacuolar porosity, white, well stratified in beds of 5-50 cm.		
A 9								
A 8	20	[Lithology: Detrital-skeletal limestone]	20					
A 7								
A 6	20	[Lithology: Detrital-skeletal limestone]	20					
A 5								
A 4	20	[Lithology: Detrital-skeletal limestone]	20					
A 3								
A 2	20	[Lithology: Detrital-skeletal limestone]	20					
A 1								

RISEPOLITO